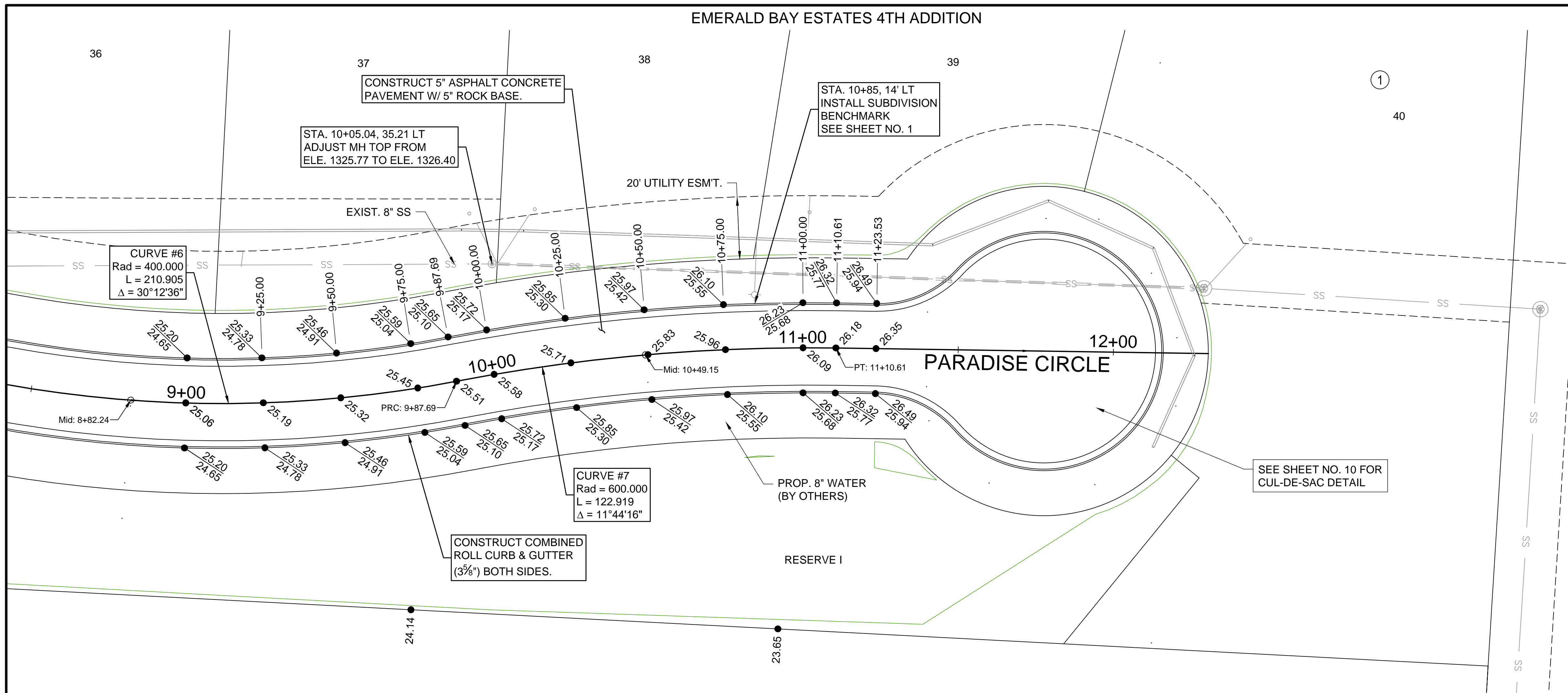
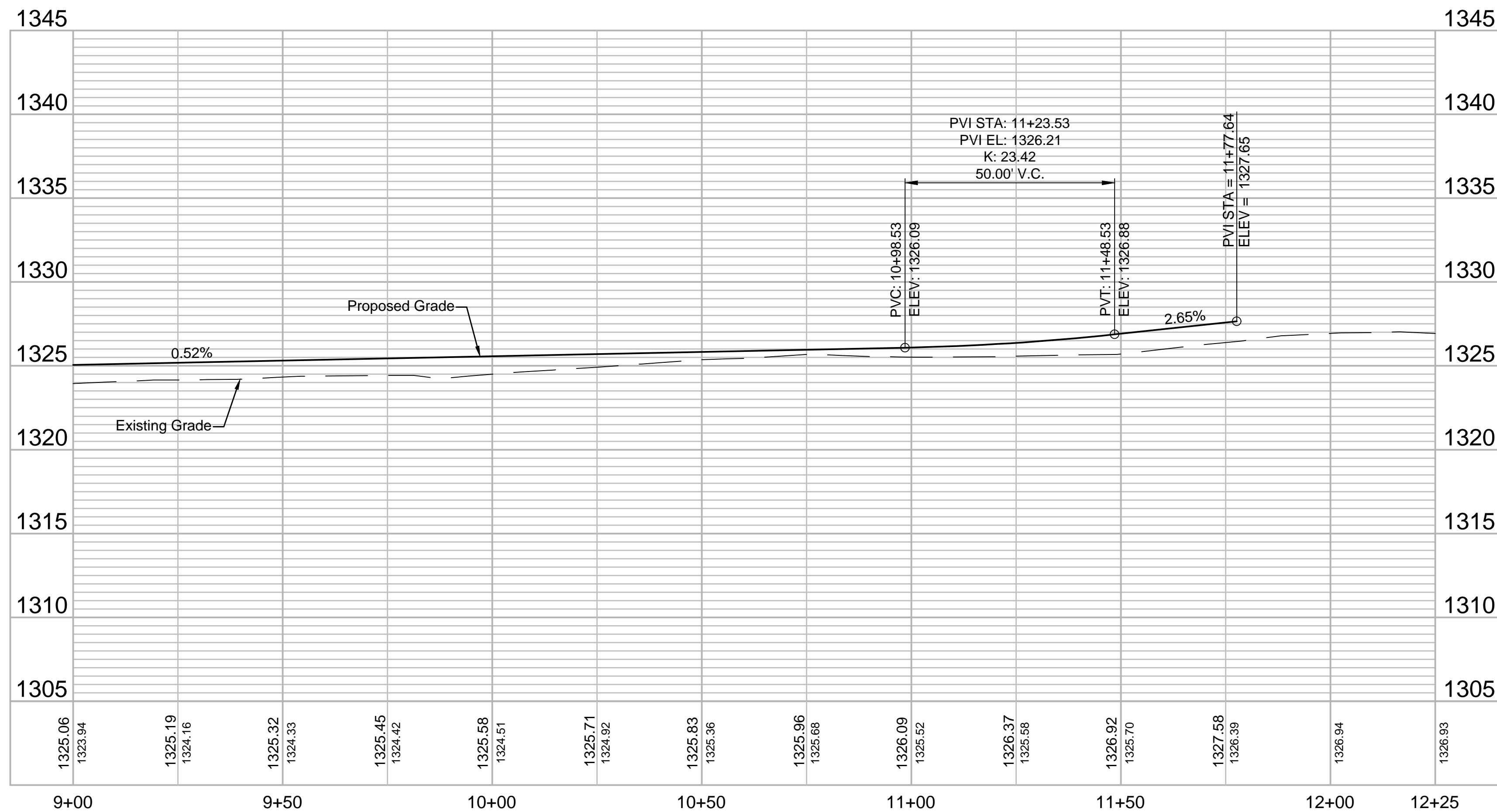
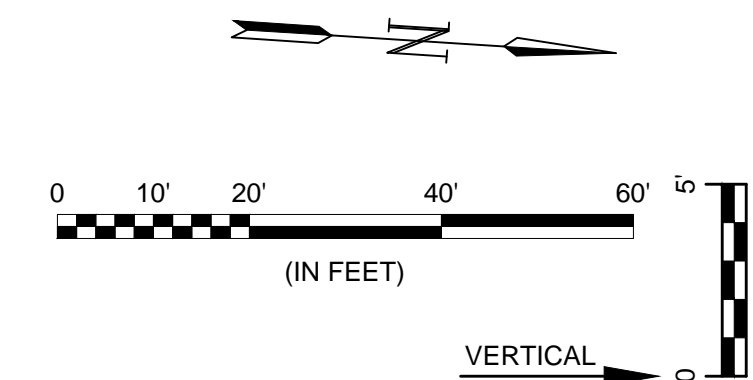


EMERALD BAY ESTATES 4TH ADDITION



SEE SHEET NO. 10 FOR CUL-DE-SAC DETAIL



File: L:\2019\19T41003 - Emerald Bay 4th Add Ph1\Drawings\C3D\Paving\PLAN\PROFILE 3.dwg Last Save: 10/14/2019 10:55 AM Last saved by: DRSandrich
 Last plotted by: Sandrich, Dairy R. Plot Style: --- Plot Scale: 1:2.5849 Plot Date: 10/21/2019 4:03 PM Plotter used: None

© 2019 GARVER, LLC
 THIS DOCUMENT, ALONG WITH THE IDEAS AND DESIGNS CONVEYED HEREIN, SHALL BE CONSIDERED INSTRUMENTS OF PROFESSIONAL SERVICE AND ARE PROPERTY OF GARVER, LLC. ANY USE, REPRODUCTION, OR DISTRIBUTION OF THIS DOCUMENT, ALONG WITH THE IDEAS AND DESIGN CONTAINED HEREIN, IS PROHIBITED UNLESS AUTHORIZED IN WRITING BY GARVER, LLC OR EXPLICITLY ALLOWED IN THE GOVERNING PROFESSIONAL SERVICES AGREEMENT FOR THIS WORK.
 8535 E. 21st St. N.
 Suite 130
 Wichita, KS 67206
 (316) 264-8008

REV.	DATE	DESCRIPTION	BY

CITY OF WICHITA
 WICHITA, KANSAS
 EMERALD BAY 4th ADD.
 PHASE 1 - PAVING

PLAN & PROFILE
(3 OF 3)

JOB NO.: 19T41003
 DATE: OCT. 2019
 DESIGNED BY: EJJ
 DRAWN BY: DRS

BAR IS ONE INCH ON ORIGINAL DRAWING
 IF NOT ONE INCH ON THIS SHEET, ADJUST SCALES ACCORDINGLY.

DRAWING NUMBER
 SHEET NUMBER **8** OF **25**