



© 2019 GARVER, LLC
 THIS DOCUMENT, ALONG WITH THE IDEAS AND DESIGNS CONVEYED HEREIN, SHALL BE CONSIDERED INSTRUMENTS OF PROFESSIONAL SERVICE AND ARE PROPERTY OF GARVER, LLC. ANY USE, REPRODUCTION, OR DISTRIBUTION OF THIS DOCUMENT, ALONG WITH THE IDEAS AND DESIGN CONTAINED HEREIN, IS PROHIBITED UNLESS AUTHORIZED IN WRITING BY GARVER, LLC OR EXPLICITLY ALLOWED IN THE GOVERNING PROFESSIONAL SERVICES AGREEMENT FOR THIS WORK.

8535 E. 21st St. N.
 Suite 130
 Wichita, KS 67206
 (316) 264-8008



REV.	DATE	DESCRIPTION	BY



CITY OF WICHITA
 WICHITA, KANSAS
 EMERALD BAY 4th ADD.
 PHASE 1 - WATER

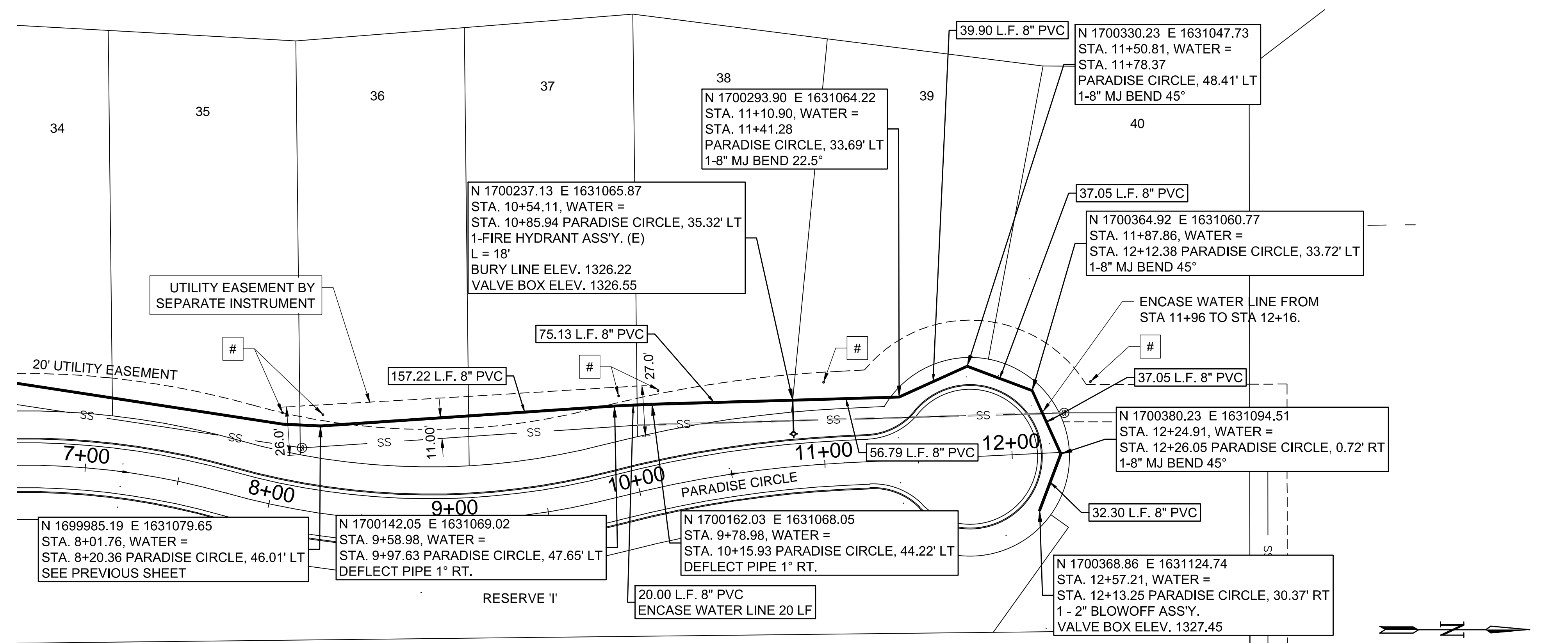
Water (2 of 2)

JOB NO.: 19T41003
 DATE: SEPT. 2019
 DESIGNED BY: EJJ
 DRAWN BY: DRS

BAR IS ONE INCH ON ORIGINAL DRAWING
 IF NOT ONE INCH ON THIS SHEET, ADJUST SCALES ACCORDINGLY.

DRAWING NUMBER

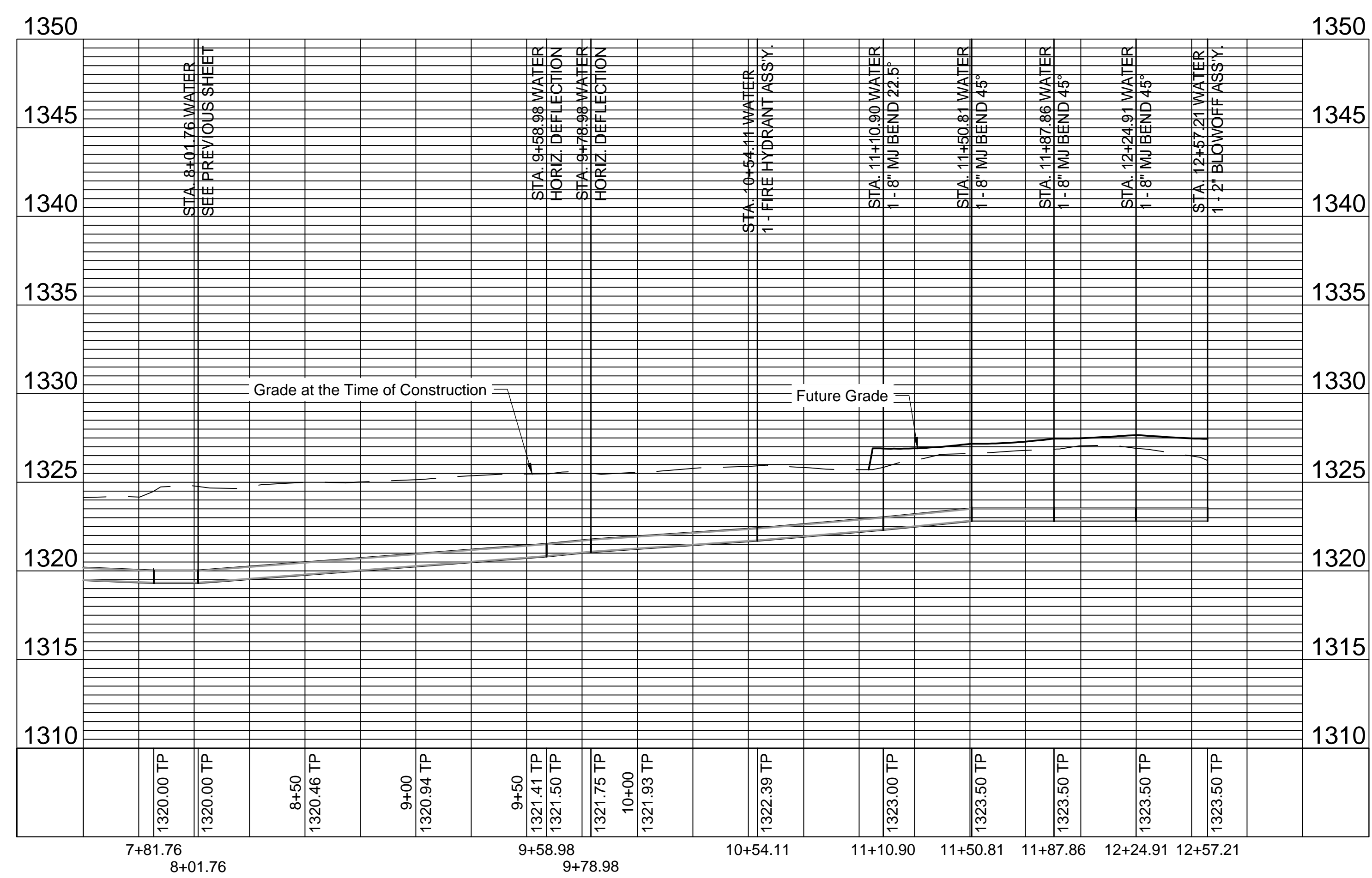
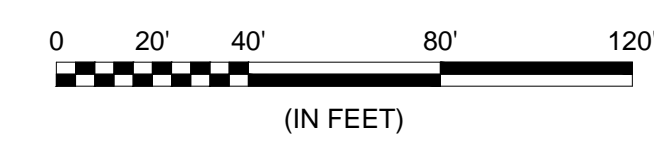
SHEET NUMBER **4** OF **14**



NOTES:

SANITARY SERVICE RISER

TYPICAL WATER LINE ENCASMENT:
 ENCASE WATER LINE IN 12" STEEL PIPE. SEAL EACH END.



File: I:\2019\1941003 - emerald bay 4th add ph1\Drawings\C3D\Water\WATER 2.dwg Last Save: 9/12/2019 2:29 PM Last saved by: E.J.Glover
 Last plotted by: Glover, Eric J. Plot Style: --- Plot Scale: 1:25649 Plot Date: 9/16/2019 7:34 AM Plotter used: None