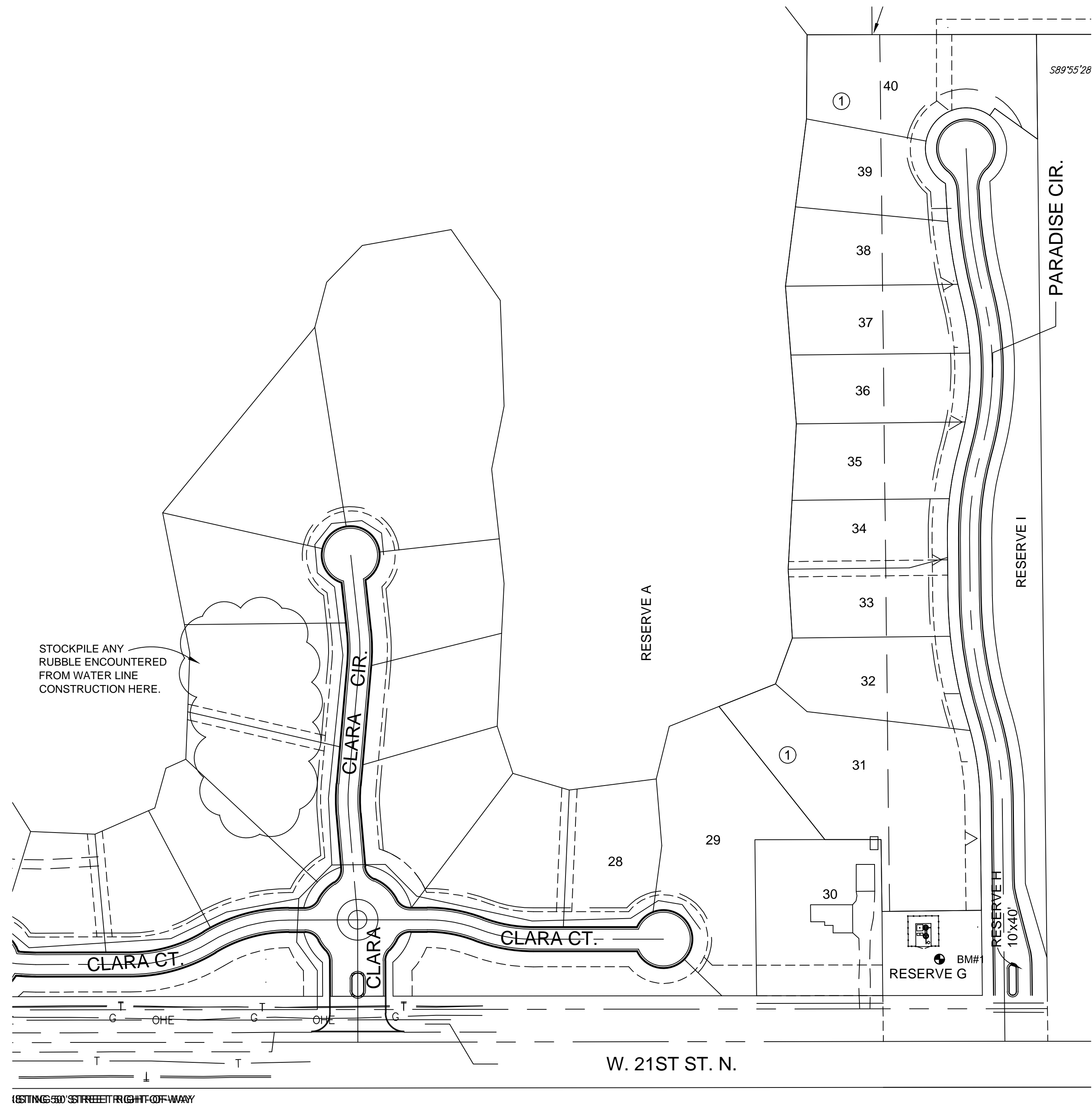


File: I:\2019\1941003 - emerald bay 4th add ph1\Drawings\C3D\Water\Rubble Location.dwg Last Save: 9/12/2019 3:34 PM Last saved by: EJGlover
 Last plotted by: Glover, Eric J. Plot Style: --- Plot Scale: 1:2.5649 Plot Date: 9/16/2019 7:35 AM Plotter used: None



NOTES:

ANY CONCRETE RUBBLE ENCOUNTERED DURING WATERLINE CONSTRUCTION SHALL BE STOCKPILED WHERE INDICATED ON THIS SHEET. CONCRETE RUBBLE WILL BE PAID AS A MEASURED ITEM PER LINEAL FOOT OF WATER LINE. RUBBLE WILL BE PAID IF IT IS AT LEAST 12" THICK WITHIN TRENCH. RUBBLE WILL BE REMOVED TO A MINIMUM OF 1.0' BELOW BOTTOM OF PROPOSED PIPE.

THE WATERLINE ALIGNMENT HAS BEEN MODIFIED TO LIE WEST OF THE EXISTING SANITARY SEWER LINE. FIELD NOTES AND PHOTOS FROM THE SANITARY CONSTRUCTION INDICATE THAT THE WATER MAIN EXCAVATION MAY BE IN THE SAND BACKFILL AREA OF THE SEWER MAIN. CONTRACTOR TO FIELD VERIFY BEFORE BIDDING.



© 2019 GARVER, LLC
 THIS DOCUMENT, ALONG WITH THE IDEAS AND DESIGNS CONVEYED HEREIN, SHALL BE CONSIDERED INSTRUMENTS OF PROFESSIONAL SERVICE AND ARE PROPERTY OF GARVER, LLC. ANY USE, REPRODUCTION, OR DISTRIBUTION OF THIS DOCUMENT, ALONG WITH THE IDEAS AND DESIGN CONTAINED HEREIN, IS PROHIBITED UNLESS AUTHORIZED IN WRITING BY GARVER, LLC OR EXPLICITLY ALLOWED IN THE GOVERNING PROFESSIONAL SERVICES AGREEMENT FOR THIS WORK.

8535 E. 21st St. N.
 Suite 130
 Wichita, KS 67206
 (316) 264-8008



REV.	DATE	DESCRIPTION	BY



CITY OF WICHITA
 WICHITA, KANSAS
 EMERALD BAY 4th ADD.
 PHASE 1 - WATER

Rubble Location

JOB NO.: 19T41003
 DATE: SEPT. 2019
 DESIGNED BY: EJG
 DRAWN BY: EJG

BAR IS ONE INCH ON ORIGINAL DRAWING
 0 100 200 300 400 500 600 700 800 900 1000
 IF NOT ONE INCH ON THIS SHEET, ADJUST SCALES ACCORDINGLY.

DRAWING NUMBER

SHEET NUMBER **5** OF **14**