

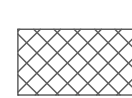


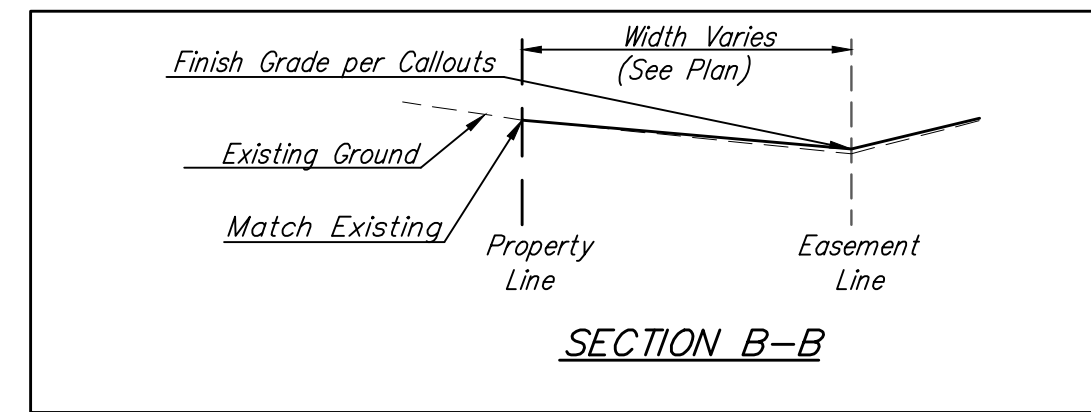
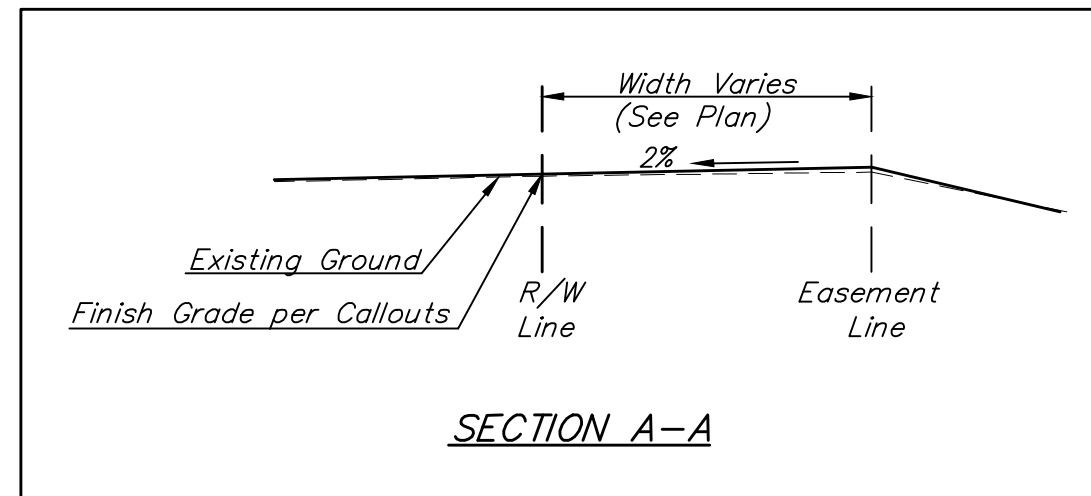
BENCHMARKS:
 Benchmark Disk in top of curb north end of east curb return, adj. to the northwest cor., Lot 1, Block C, Sandcrest 4th Addn.
 Elev. = 1338.02 NAVD88


"□" cut in top of curb adj. to the southwest corner of Lot 42, Block B, Sandcrest 4th Addn.
 Elev. = 1327.78 NAVD88

"□" cut in face of curb inlet, east side of Anna ST, between Lot 3 & Lot 4, Block C, Sandcrest 4th Addn.
 Elev. = 1327.09 NAVD88

EROSION CONTROL PLAN LEGEND

-  - DROP INLET PROTECTION
-  - CURB INLET PROTECTION
-  - BACK OF CURB PROTECTION



 = Easements To Be Graded

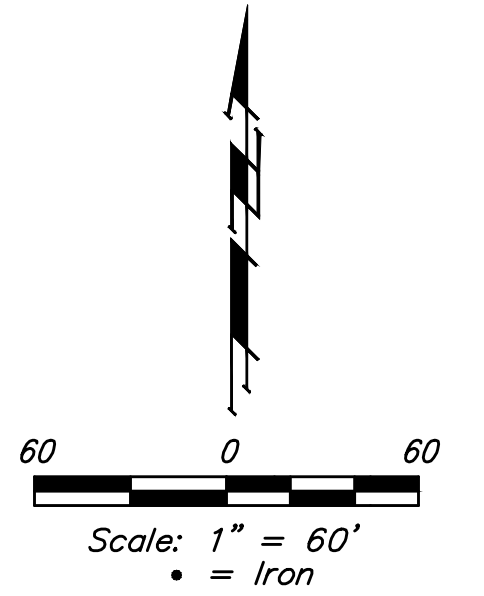
Approximate Easement Grading Quantities:
 (For Information Only)
 Excavation: 63 C.Y.
 Fill: 368 C.Y.

The Contractor shall grade the easements as shown to the elevations given on the easement grading plan.

The Contractor shall 'straight' grade the easements between the elevations given. Where a callout designates 'Match', the Contractor will grade to the existing ground elevation.

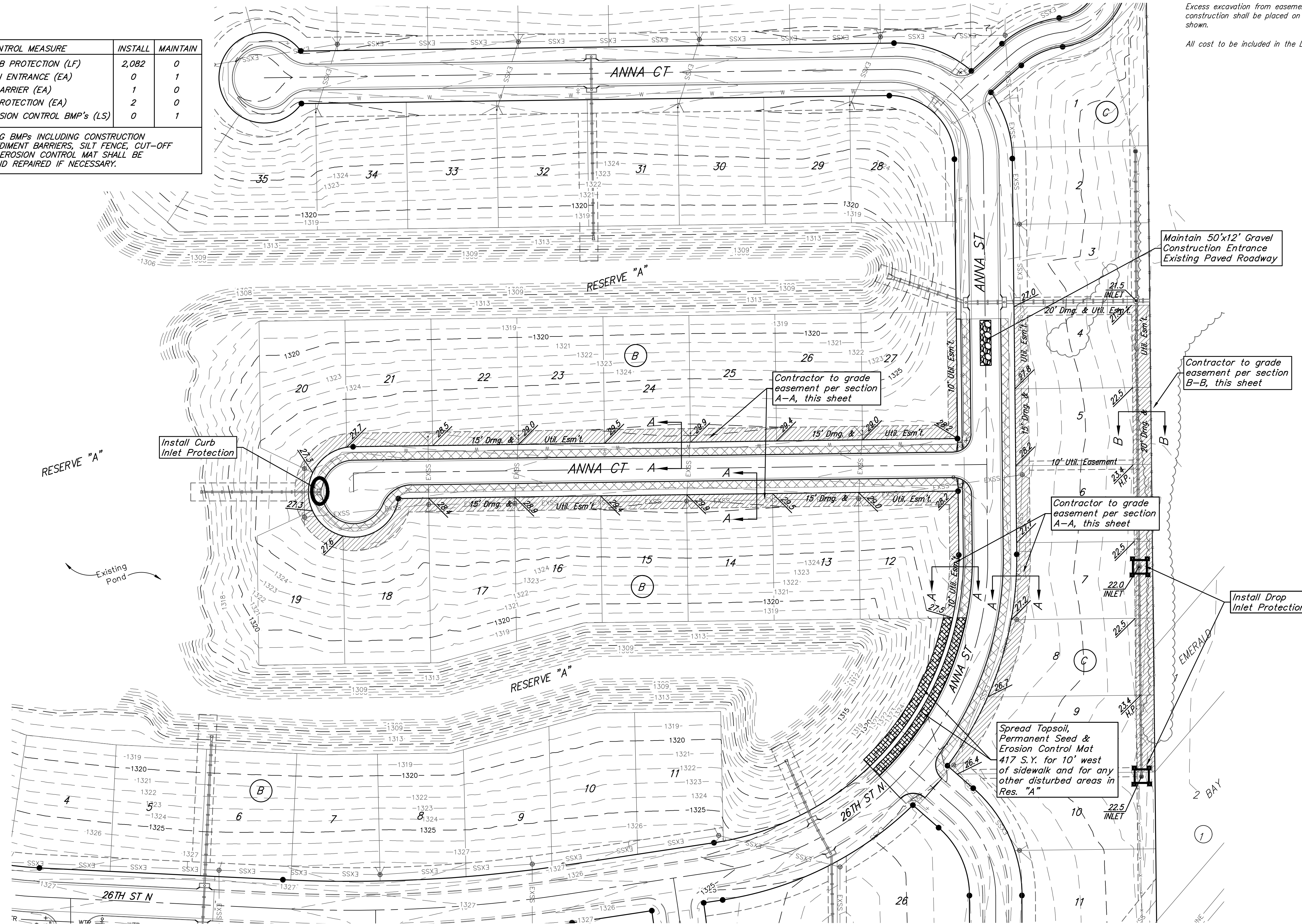
Excess excavation from easement grading and from sanitary sewer construction shall be placed on the lots as indicated to the elevations shown.

All cost to be included in the Lump Sum bid item "Easement Grading"




EROSION CONTROL MEASURE	INSTALL	MAINTAIN
BACK OF CURB PROTECTION (LF)	2,082	0
CONSTRUCTION ENTRANCE (EA)	0	1
CURB INLET BARRIER (EA)	1	0
DROP INLET PROTECTION (EA)	2	0
MAINTAIN EROSION CONTROL BMP's (LS)	0	1

* ALL EXISTING BMPs INCLUDING CONSTRUCTION ENTRANCE, SEDIMENT BARRIERS, SILT FENCE, CUT-OFF TRENCH, AND EROSION CONTROL MAT SHALL BE MAINTAINED AND REPAIRED IF NECESSARY.



NOTES:

- Contractor shall make sure all erosion control is in place before project is accepted. This plan represents the minimum standard. Any additional erosion control measures shall be installed by the Contractor as needed.
- Removal of Gravel Construction Entrance for pavement construction shall be included in bid item "Site Clearing"
- This Plan Is Not To Be Used As A Comprehensive Grading Plan. All Spot Elevations Are Proposed & Subject To Change.
- All areas disturbed during construction shall be seeded, mulched, and fertilized as per Cover Sheet General Notes.

	Sandcrest 4th Addition - Phase III	
	EROSION CONTROL	
Street Improvements		
Baughman Company, P.A. 315 Ellis St. Wichita, KS 67211 P 316-262-7271 F 316-262-0149		
ENGINEERING SURVEYING PLANNING LANDSCAPE ARCHITECTURE		
PROJECT NUMBER 472-85458	DESIGN AEG	DRAWN JAK
REVISIONS:	APPROVED	DATE 11/08/19
	SCALE Noted	SHEET 10 OF 20