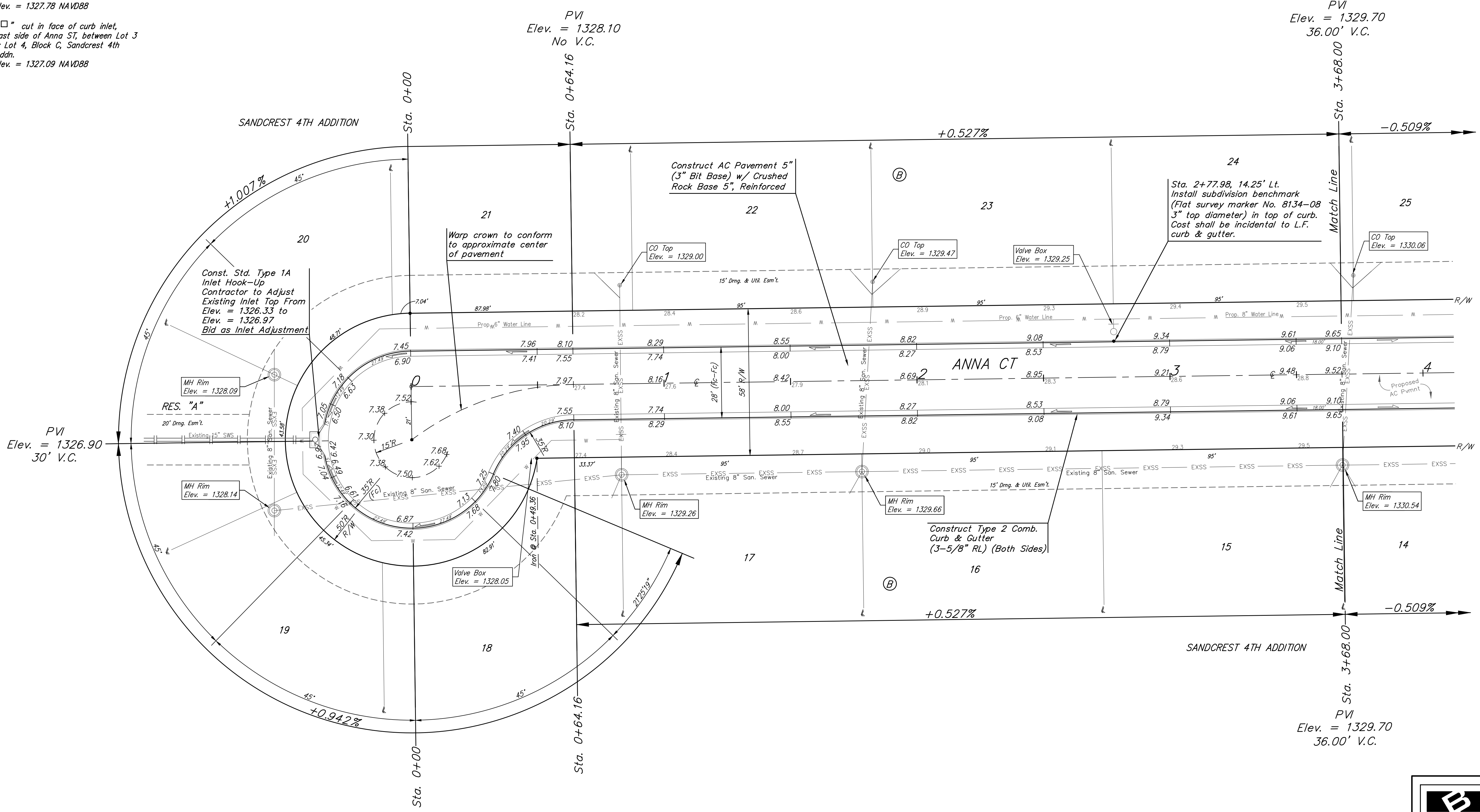
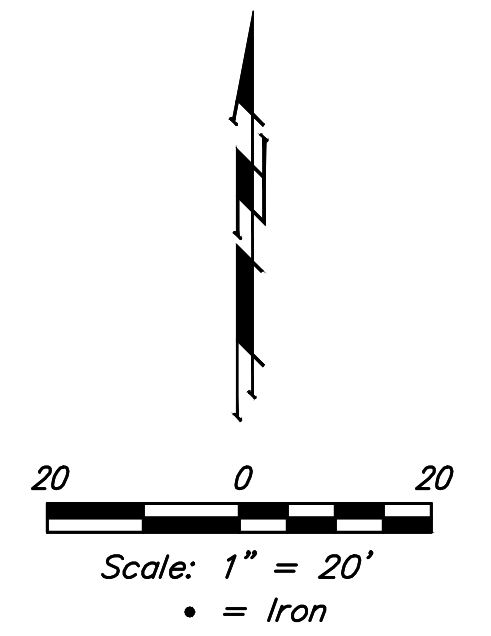


BENCHMARKS:
 Benchmark Disk in top of curb
 north end of east curb return, adj.
 to the northwest cor., Lot 1, Block C,
 Sandcrest 4th Addn.
 Elev. = 1338.02 NAVD88

"□" cut in top of curb adj. to the
 southwest corner of Lot 42, Block B,
 Sandcrest 4th Addn.
 Elev. = 1327.78 NAVD88

"□" cut in face of curb inlet,
 east side of Anna St, between Lot 3
 & Lot 4, Block C, Sandcrest 4th
 Addn.
 Elev. = 1327.09 NAVD88



Subdivision Benchmarks

Street & Station	Location Description	Elevation
Anna Ct 2+77.98, 14.25' Lt.	Adjacent to Fire Hydrant South of the SE Cor., Lot 232, Blk B	

Roll type curb & gutter to
 be constructed on the pavement
 on this sheet.
 Top of curb elevation are given
 for full height curb.

	Sandcrest 4th Addition - Phase III	
	ANNA CT Sta. 0+00 to Sta. 3+68.00	
<small>Baughman Company, P.A. 315 Ellis St. Wichita, KS 67211 P 316-262-7271 F 316-262-0149 ENGINEERING SURVEYING PLANNING LANDSCAPE ARCHITECTURE</small>		
PROJECT NUMBER 472-85458	DESIGN AEG	DRAWN JAK
REVISIONS:	APPROVED	DATE 11/08/19
	SCALE Noted	SHEET
		8 OF 20

E:\Projects\Sandcrest 4th Addition_1801P3151_Engineering\Phase 3\STR_19-10-E394\STR PLANS.dwg