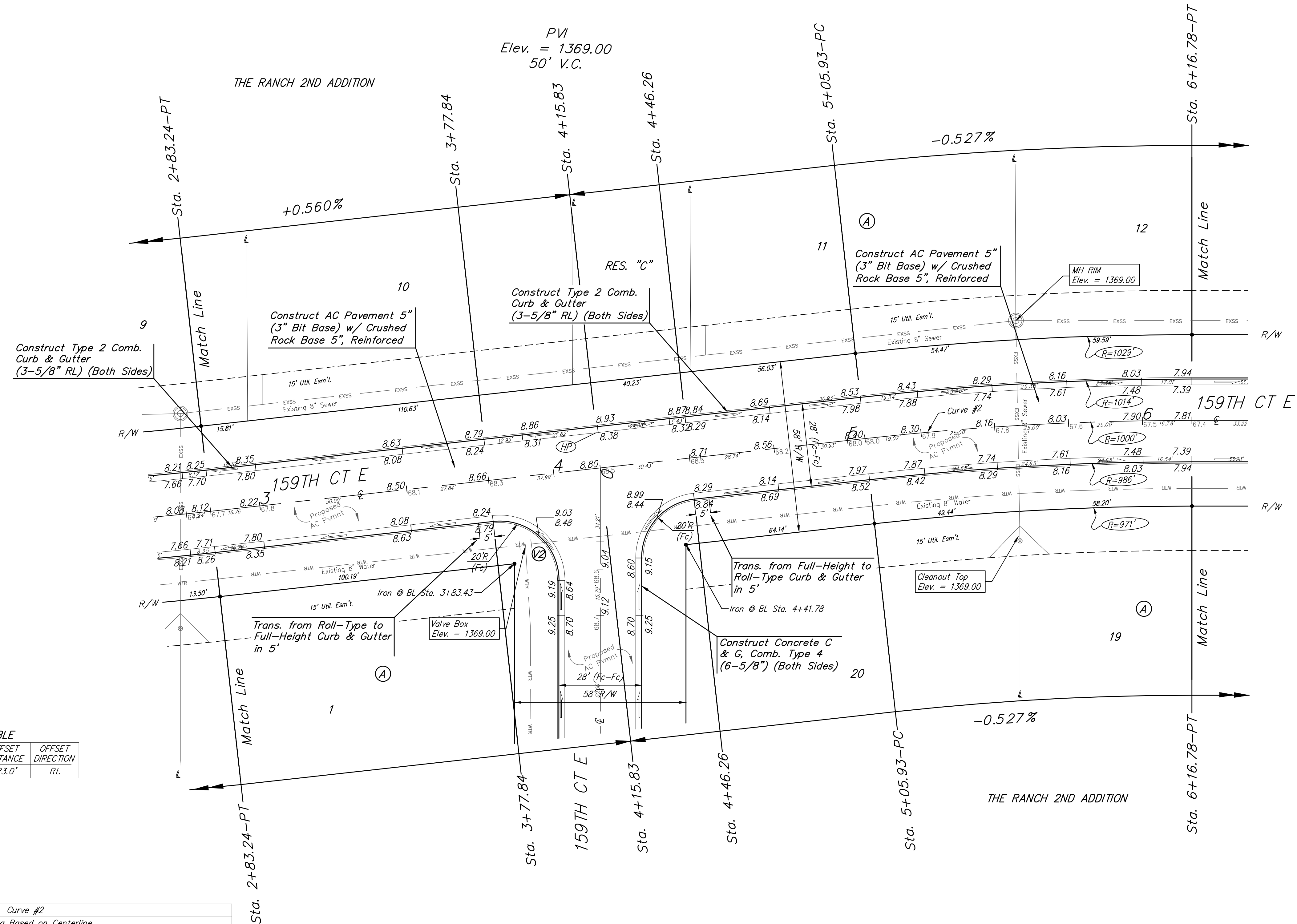
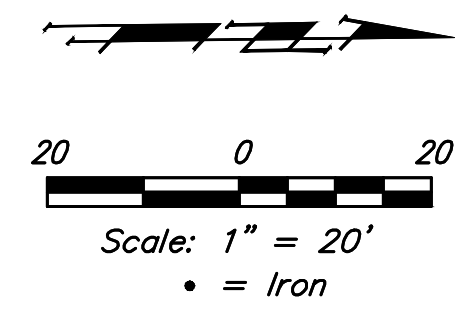


BENCHMARKS:
 #1: "X" CUT CHISELED ON CURB INLET,
 8.9' S. & 27.5' W. OF THE NW COR., LOT
 22, BLOCK 1, QUAIL CROSSING ADDITION,
 PHASE 2, 22.3' EAST OF @ N. 159TH ST. E.
 ELEV. = 1370.15 (NAVD88)

#2: "X" CUT CHISELED ON CURB INLET,
 13.2' S. & 60.1' E. OF THE NE COR., LOT
 2, BLOCK A, THE RANCH 2ND ADDITION,
 24.9' WEST OF @ N. 159TH ST. E.
 ELEV. = 1369.05 (NAVD88)



VALVE LOCATION TABLE

VALVE NUMBER	STREET	BASELINE STATION	OFFSET DISTANCE	OFFSET DIRECTION
2	159th Ct. E	3+87.86	23.0'	Rt.

Curve #2

Curve Data Based on Centerline
 Rad. = 1000' Delta = 6°21'04" Tangent = 55.48'
 Arc = 110.85' L.C. = 110.79' Def./Ft. = 1.71884 Min.

Station	Arc	Face Chord Lengths		Defl.	Total Defl.
		0' Left	0' Right		
5+05.93	-	-	-	0'00'00"	0'00'00"
5+25.00	19.07'	19.34'	18.80'	0'32'47"	0'32'47"
5+50.00	25.00'	25.35'	24.65'	0'42'58"	1'15'45"
5+75.00	25.00'	25.35'	24.65'	0'42'58"	1'58'43"
6+00.00	25.00'	25.35'	24.65'	0'42'58"	2'41'41"
6+16.78	16.78'	17.01'	16.54'	0'28'51"	3'10'32"

	The Ranch 2nd Addition	
	159TH CT E	
Sta. 2+83.24 to Sta. 6+16.78		
<small>Baughman Company, P.A. 315 Ellis St. Wichita, KS 67211 P 316-262-7271 F 316-262-0149 ENGINEERING SURVEYING PLANNING LANDSCAPE ARCHITECTURE</small>		
PROJECT NUMBER 2019-085564	DESIGN AEG	DRAWN HIW
REVISIONS:	APPROVED	DATE 11/11/19
SCALE Noted		SHEET 7 OF 23