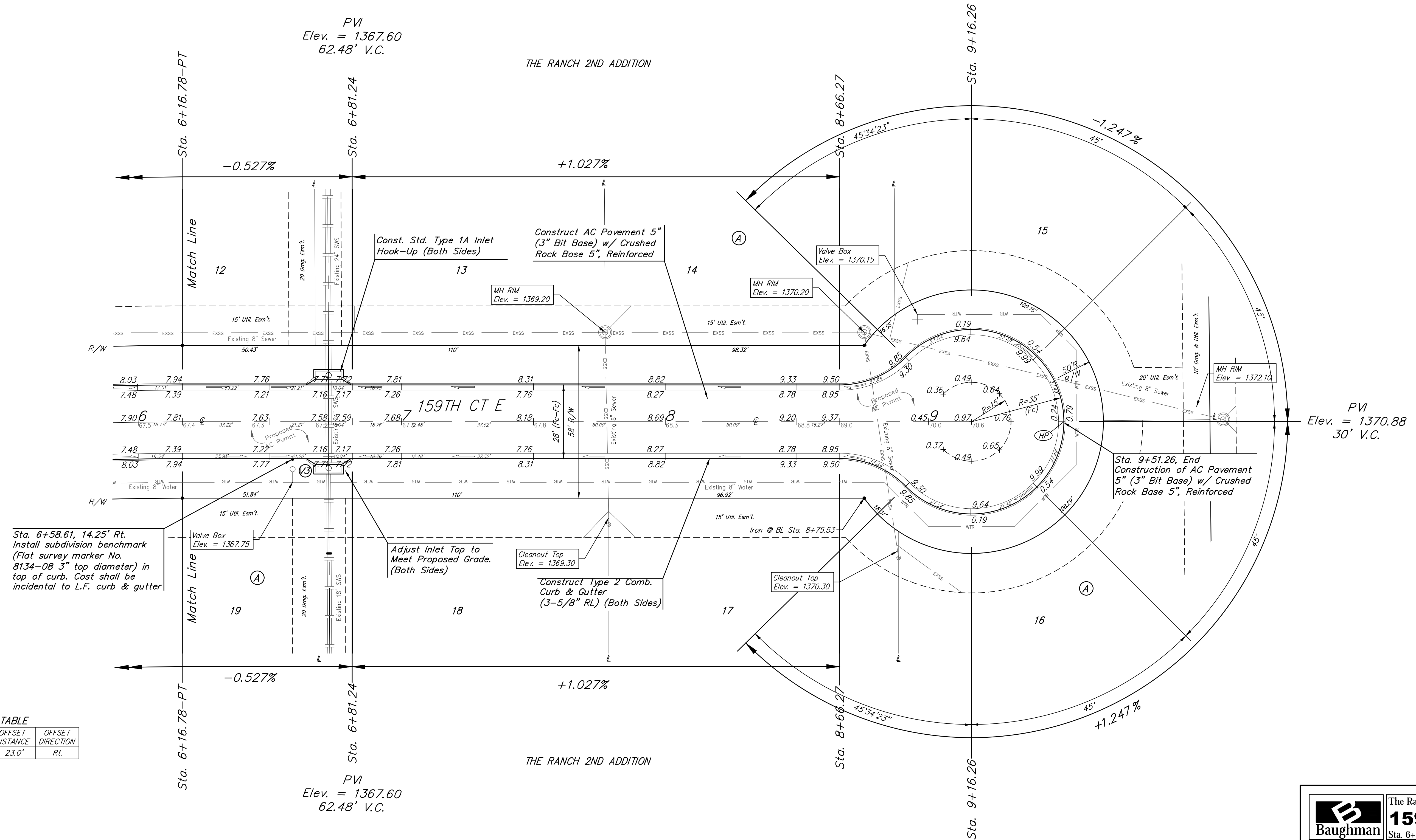
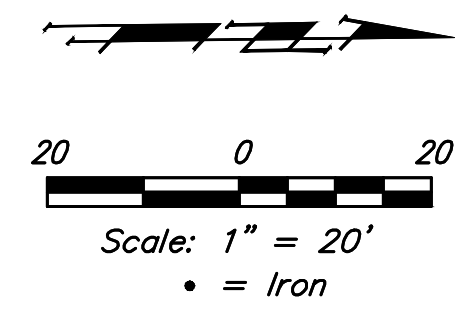


**BENCHMARKS:**  
 #1: "X" CUT CHISELED ON CURB INLET,  
 8.9' S. & 27.5' W. OF THE NW COR., LOT  
 22, BLOCK 1, QUAIL CROSSING ADDITION,  
 PHASE 2, 22.3' EAST OF @ N. 159TH ST. E.  
 ELEV. = 1370.15 (NAVD88)

#2: "X" CUT CHISELED ON CURB INLET,  
 13.2' S. & 60.1' E. OF THE NE COR., LOT  
 2, BLOCK A, THE RANCH 2ND ADDITION,  
 24.9' WEST OF @ N. 159TH ST. E.  
 ELEV. = 1369.05 (NAVD88)



Sta. 6+58.61, 14.25' Rt.  
 Install subdivision benchmark  
 (Flat survey marker No.  
 8134-08 3" top diameter) in  
 top of curb. Cost shall be  
 incidental to L.F. curb & gutter

Sta. 9+51.26, End  
 Construction of AC Pavement  
 5" (3" Bit Base) w/ Crushed  
 Rock Base 5", Reinforced

**VALVE LOCATION TABLE**

VALVE NUMBER	STREET	BASELINE STATION	OFFSET DISTANCE	OFFSET DIRECTION
3	159th Ct. E	6+58.61	23.0'	Rt.

Roll type curb & gutter to  
 be constructed on the pavement  
 on this sheet.  
 Top of curb elevation are given  
 for full height curb.

	The Ranch 2nd Addition	
	<b>159TH CT E</b>	
Sta. 6+16.78 to Sta. 9+51.26		
Baughman Company, P.A. 315 Ellis St. Wichita, KS 67211 P 316-262-7271 F 316-262-0149		
ENGINEERING   SURVEYING   PLANNING   LANDSCAPE ARCHITECTURE		
PROJECT NUMBER 2019-085564	DESIGN AEG	DRAWN HIW
REVISIONS:	APPROVED	DATE 11/11/19
	SCALE Noted	SHEET
		<b>8 OF 23</b>