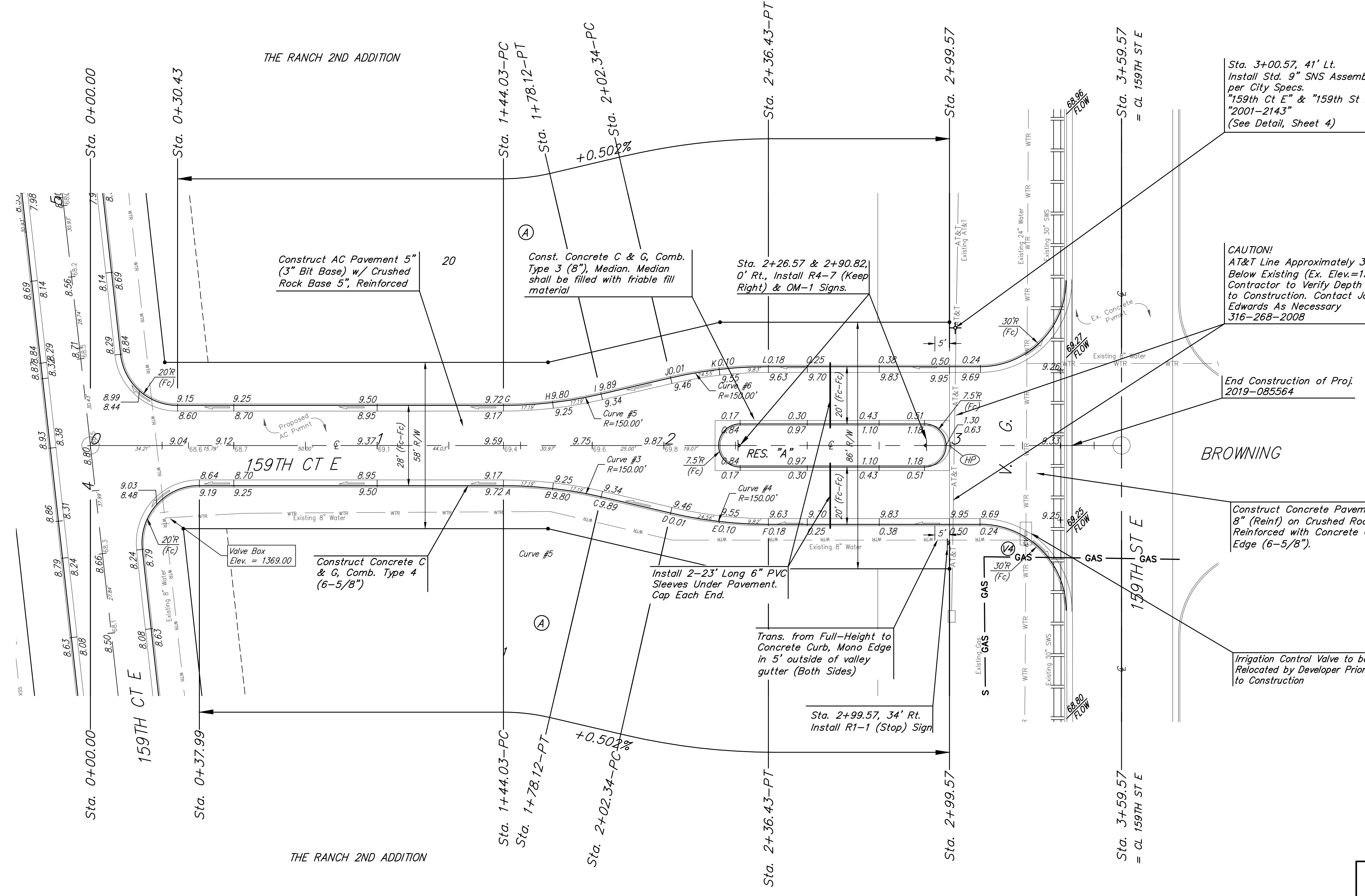
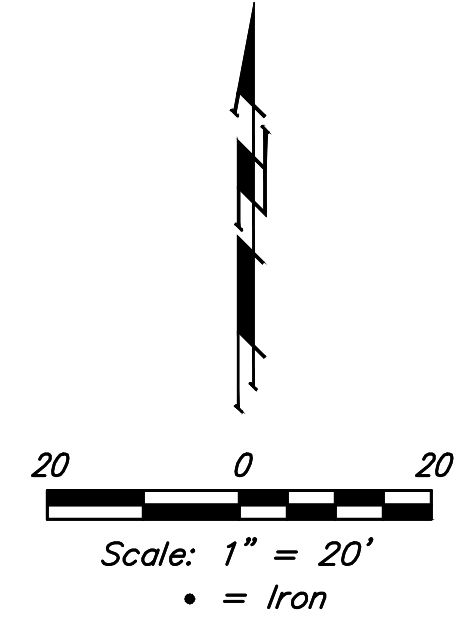


BENCHMARKS:
 #1: "X" CUT CHISELED ON CURB INLET,
 8.9' S. & 27.5' W. OF THE NW COR., LOT
 22, BLOCK 1, QUAIL CROSSING ADDITION,
 PHASE 2, 22.3' EAST OF @ N. 159TH ST. E.
 ELEV. = 1370.15 (NAVD88)

#2: "X" CUT CHISELED ON CURB INLET,
 13.2' S. & 60.1' E. OF THE NE COR., LOT
 2, BLOCK A, THE RANCH 2ND ADDITION,
 24.9' WEST OF @ N. 159TH ST. E.
 ELEV. = 1369.05 (NAVD88)

Curve #5				
Curve Data Based on Face of Curb				
Rad. = 150' Delta = 13°08'02" Tangent = 17.27'				
Arc = 34.38' L.C. = 34.31' Def./Ft. = 11.46064 Min.				
Station	Arc	Chord	Defl.	Total Defl.
G	-	-	0'00"00"	0'00"00"
H	17.19'	17.18'	3'17"00"	3'17"00"
I	17.19'	17.18'	3'17"01"	6'34"01"

Curve #6				
Curve Data Based on Face of Curb				
Rad. = 150' Delta = 13°08'02" Tangent = 17.27'				
Arc = 34.38' L.C. = 34.31' Def./Ft. = 11.46064 Min.				
Station	Arc	Chord	Defl.	Total Defl.
J	-	-	0'00"00"	0'00"00"
K	17.19'	17.18'	3'17"00"	3'17"00"
L	17.19'	17.18'	3'17"01"	6'34"01"



VALVE LOCATION TABLE

VALVE NUMBER	STREET	BASELINE STATION	OFFSET DISTANCE	OFFSET DIRECTION
4	159th Ct. E	3+24.21	33.0'	Rt.

Curve #3				
Curve Data Based on Face of Curb				
Rad. = 150' Delta = 13°08'02" Tangent = 17.27'				
Arc = 34.38' L.C. = 34.31' Def./Ft. = 11.46064 Min.				
Station	Arc	Chord	Defl.	Total Defl.
A	-	-	0'00"00"	0'00"00"
B	17.19'	17.18'	3'17"00"	3'17"00"
C	17.19'	17.18'	3'17"01"	6'34"01"

Curve #4				
Curve Data Based on Face of Curb				
Rad. = 150' Delta = 13°08'02" Tangent = 17.27'				
Arc = 34.38' L.C. = 34.31' Def./Ft. = 11.46064 Min.				
Station	Arc	Chord	Defl.	Total Defl.
D	-	-	0'00"00"	0'00"00"
E	17.19'	17.18'	3'17"00"	3'17"00"
F	17.19'	17.18'	3'17"01"	6'34"01"

NOTE:
 Contractor Will Need to Obtain a City of Andover Excavation Permit Prior to Work in the 159th St. E. R/W. Found At <https://www.andoverks.com/20/Building-Inspections-Department>

	The Ranch 2nd Addition	
	159TH CT E	
Sta. 0+30.43 to Sta. 3+59.57		
<small>Baughman Company, P.A. 315 Ellis St. Wichita, KS 67211 P 316-262-7271 F 316-262-0149 ENGINEERING SURVEYING PLANNING LANDSCAPE ARCHITECTURE</small>		
PROJECT NUMBER 2019-085564	DESIGN AEG	DRAWN HW
REVISIONS:	APPROVED	DATE 11/11/19
SCALE Noted		SHEET 9 OF 23