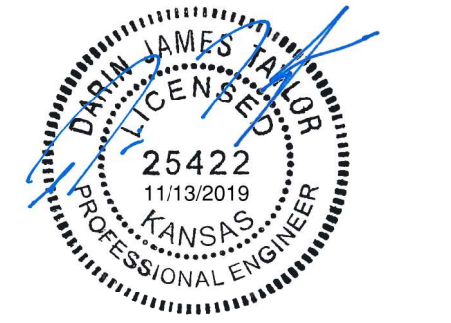


PEC

PROFESSIONAL ENGINEERING CONSULTANTS
303 SOUTH TOPEKA
WICHITA, KS 67202
316-262-2691 www.pec1.com



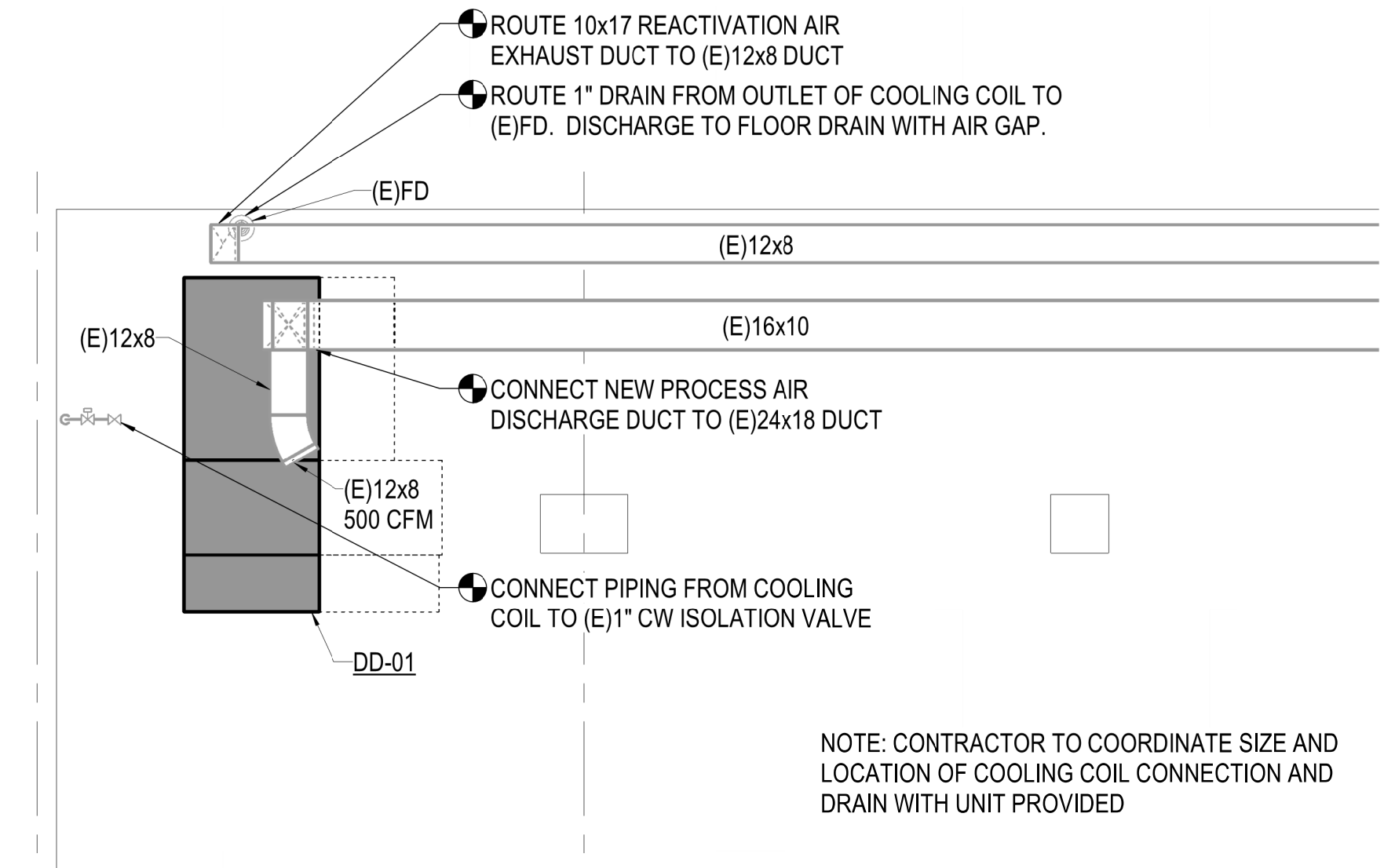
2020 HESS PUMP STATION
DEHUMIDIFIER REPLACEMENT
WICHITA, KS

ENLARGED MECHANICAL
PLANS

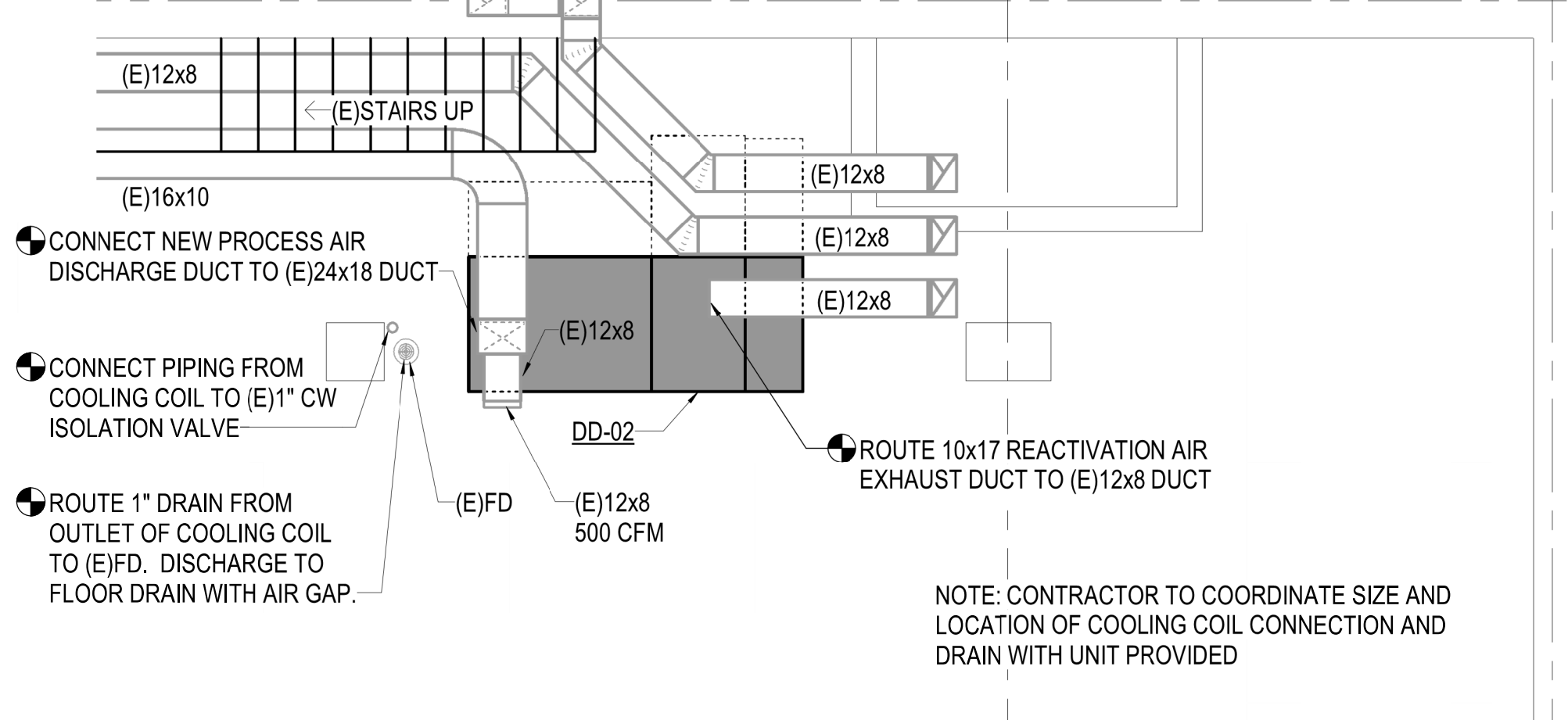
JOB NO. 197043-008
DATE 11/13/2019
DRAWN BY JPB
CHECKED BY DJT

M3.1

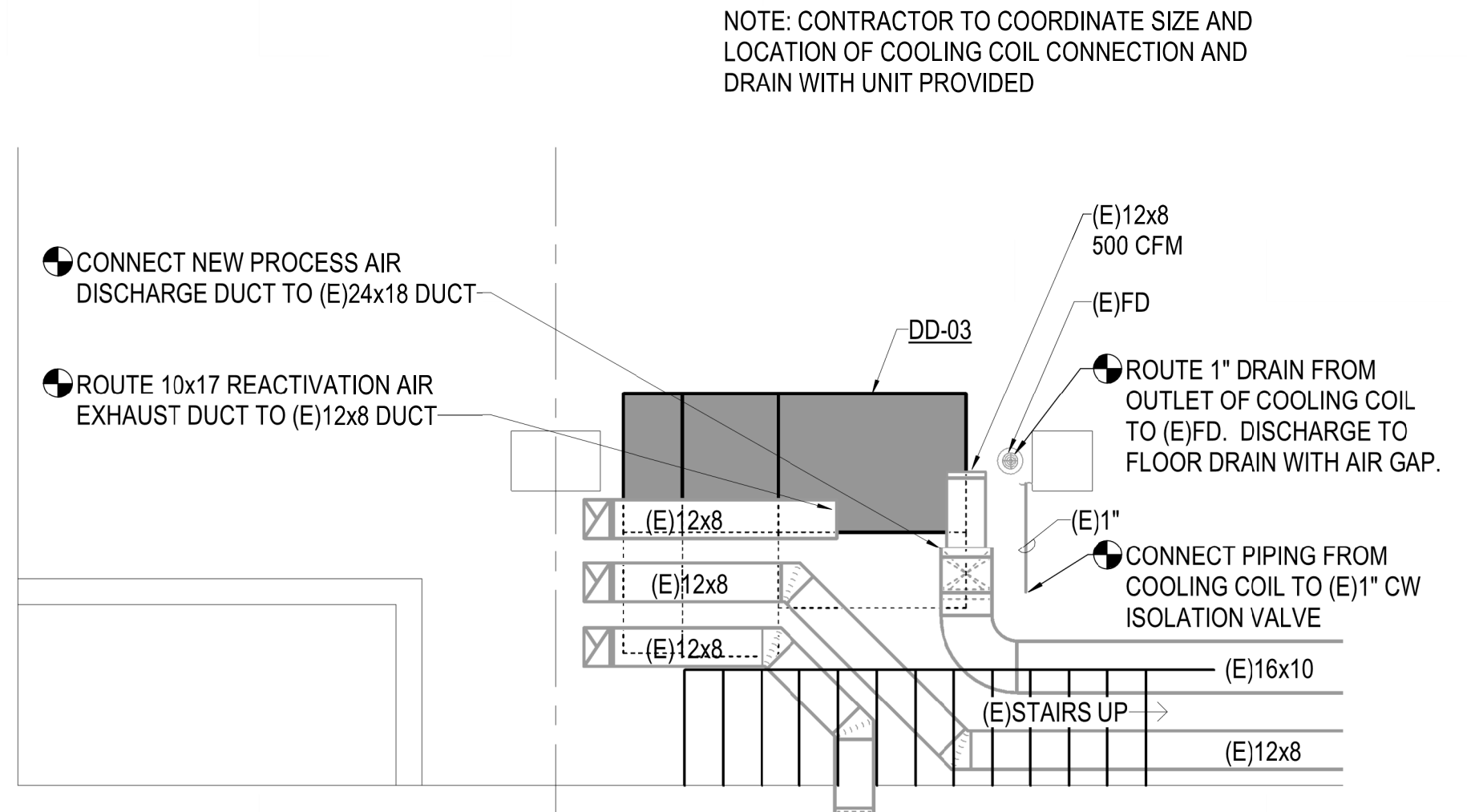
MABCD REVIEWER:



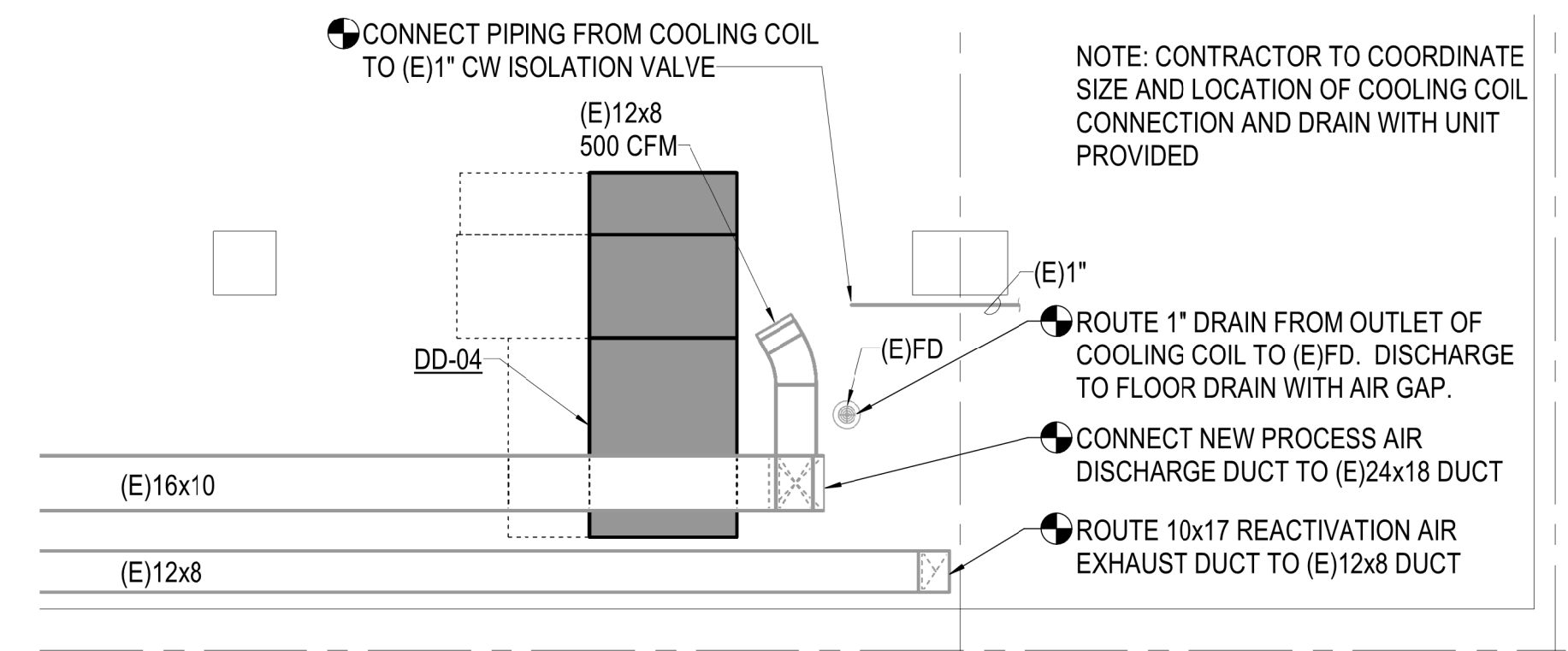
1 DEHUMIDIFIER 1
0' 4' 8' 12' 1/4" = 1'-0"
BASE BID



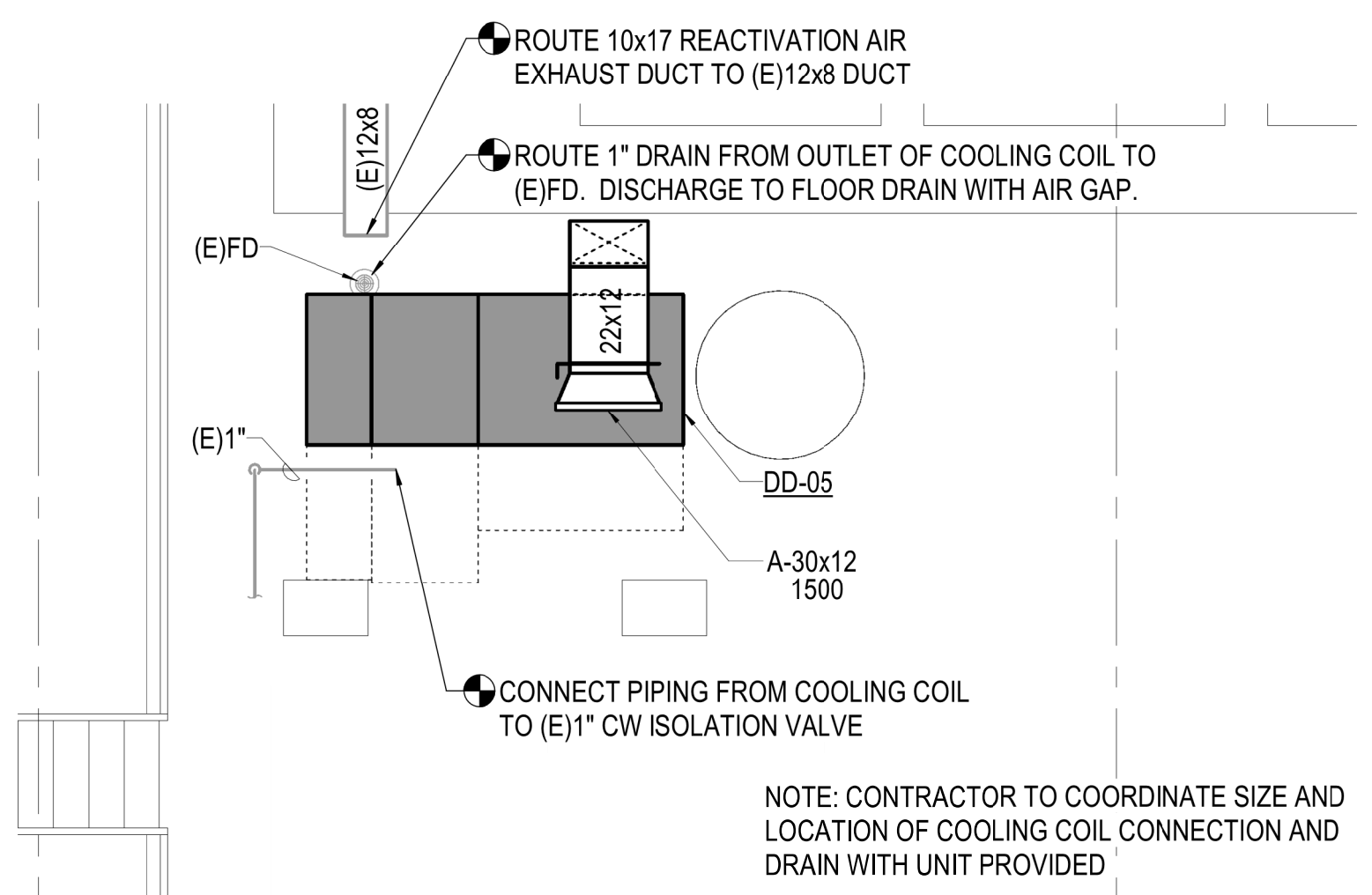
2 DEHUMIDIFIER 2
0' 4' 8' 12' 1/4" = 1'-0"
BASE BID



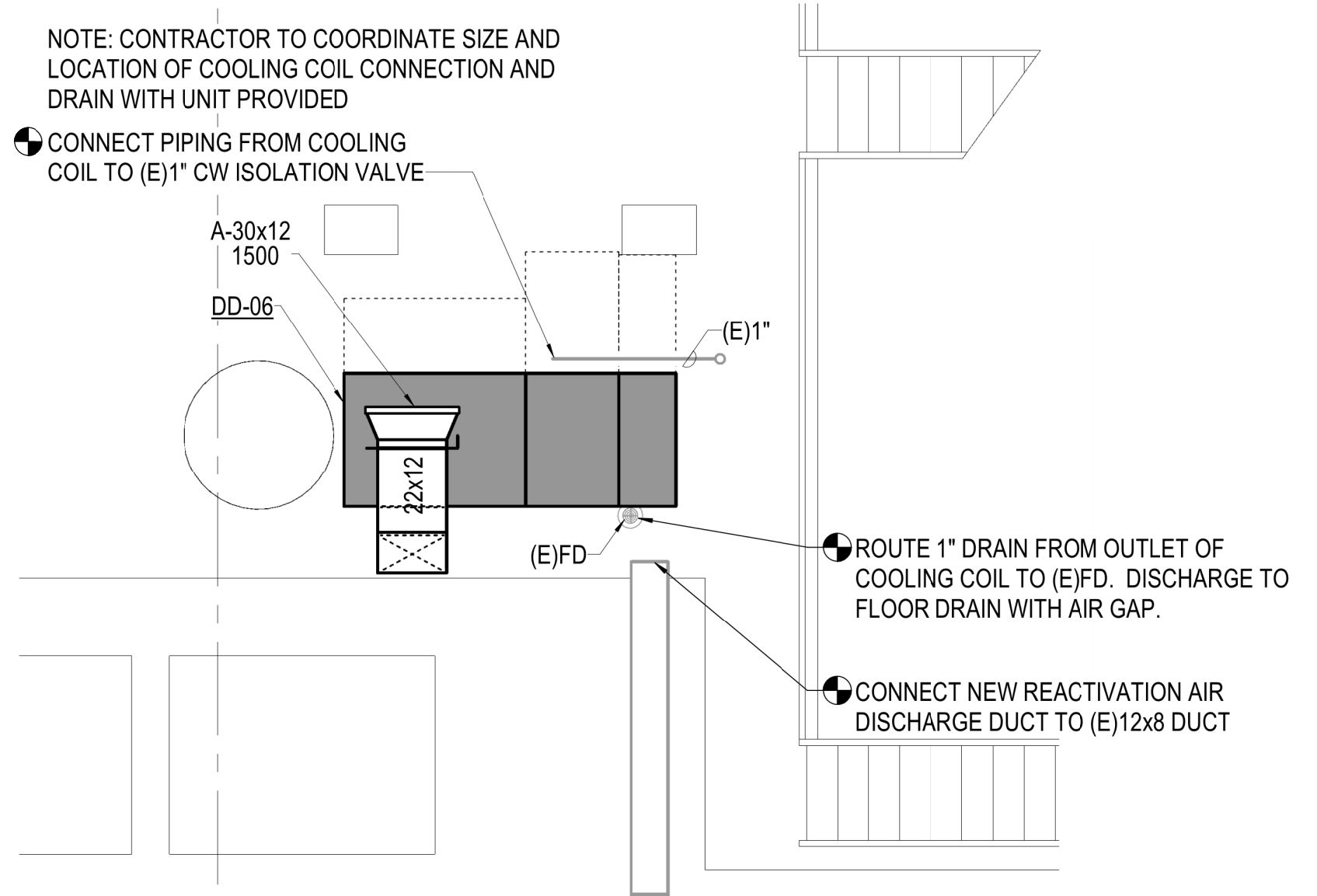
3 DEHUMIDIFIER 3
0' 4' 8' 12' 1/4" = 1'-0"
BASE BID



4 DEHUMIDIFIER 4
0' 4' 8' 12' 1/4" = 1'-0"
BASE BID



5 DEHUMIDIFIER 5
0' 4' 8' 12' 1/4" = 1'-0"
ALT. 1



6 DEHUMIDIFIER 6
0' 4' 8' 12' 1/4" = 1'-0"
ALT. 2

11/13/2019 12:43:56 PM C:\Users\jeff.bogner\Documents\197043-008-MECH-R19_jeff.bogner@pec1.com.rvt