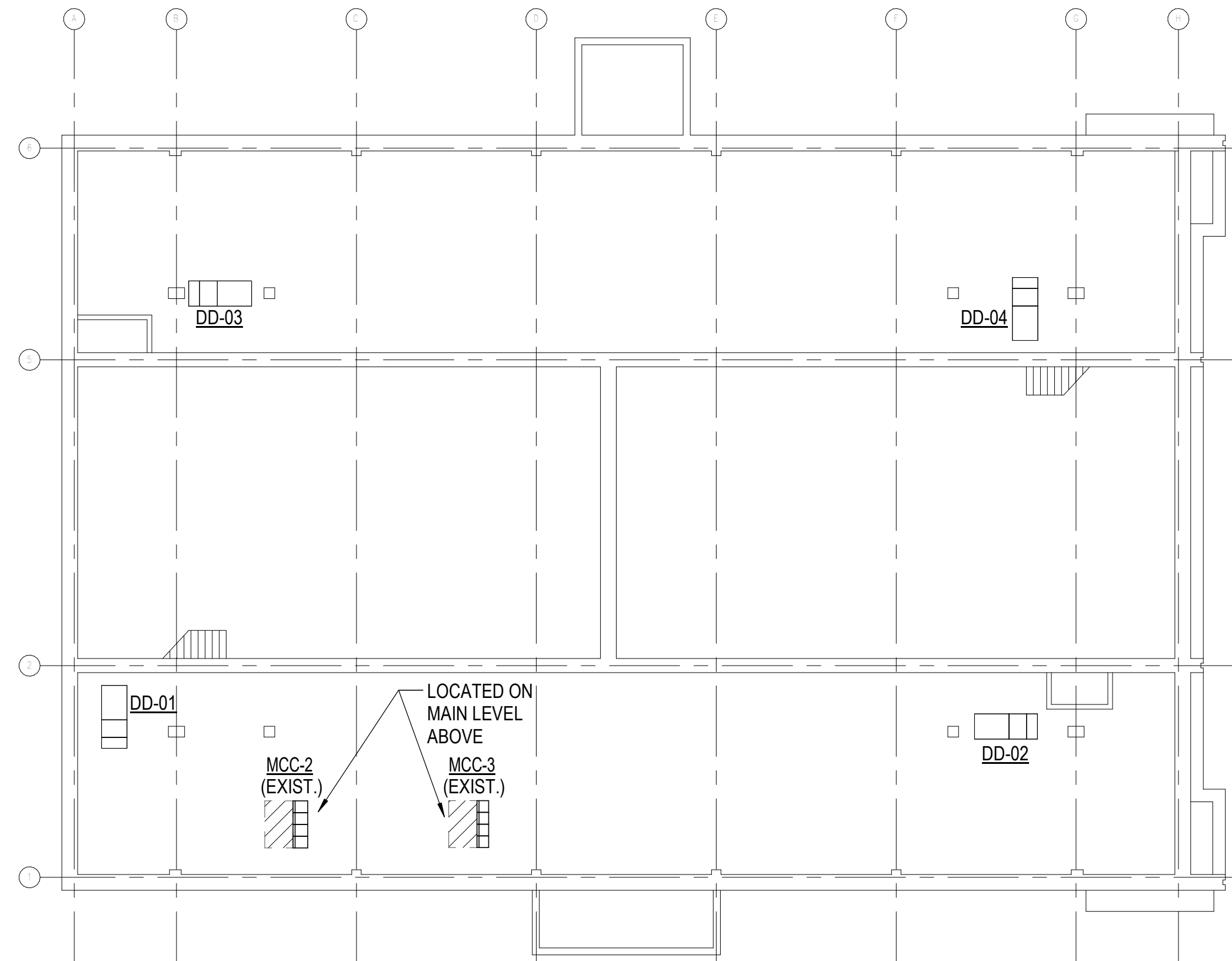


**A ELECTRICAL POWER PLAN - BASEMENT**

0' 4' 8' 12' 1/16" = 1'-0"

N



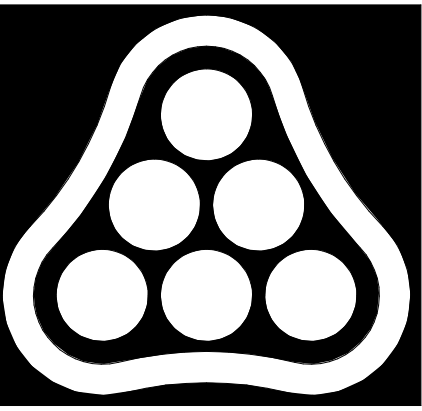
**B ELECTRICAL POWER PLAN - PUMP FLOOR**

0' 8' 16' 24' 1/16" = 1'-0"

N

**POWER PLAN NOTES:**

1. BRANCH CIRCUITS ARE INDICATED AS ONE CIRCUIT HOME RUNS WITH INDIVIDUAL NEUTRALS. A MAXIMUM OF THREE CIRCUITS (MAXIMUM OF THREE PHASE CONDUCTORS) MAY BE GROUPED IN A SINGLE CONDUIT. WHERE MULTIPLE CIRCUITS ARE LOCATED IN THE SAME RACEWAY, JUNCTION BOX OR ENCLOSURE, NEUTRALS SHALL BE MARKED OR LABELED TO INDICATE WHICH CIRCUIT THEY ARE ASSOCIATED WITH. SEE SPECIFICATION SECTION "LOW VOLTAGE ELECTRICAL POWER CONDUCTORS AND CABLES" FOR ADDITIONAL INFORMATION.
2. A GROUND CONDUCTOR SIZED PER N.E.C. ARTICLE 250 IS REQUIRED IN ALL CONDUITS.
3. FOR CONNECTION REQUIREMENTS TO MECHANICAL UNITS, SEE MECHANICAL EQUIPMENT CONNECTION SCHEDULE.
4. ALL PENETRATIONS IN THE RATED WALLS AND CEILINGS SHALL BE SEALED WITH A MATERIAL CAPABLE OF PREVENTING THE PASSAGE OF FLAMES AND HOT GASSES. THE SEALANT SHALL HAVE A T-RATING OF ONE HOUR.

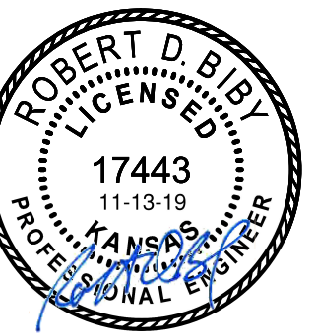


**PEC**

PROFESSIONAL ENGINEERING CONSULTANTS  
303 SOUTH TOPEKA  
WICHITA, KS 67202  
316-262-2691 www.pec1.com



CITY OF  
**WICHITA**



2020 HESS PUMP STATION  
DEHUMIDIFIER REPLACEMENT  
WICHITA, KS

ELECTRICAL POWER  
PLANS

JOB NO. 197043-008  
DATE 11/13/19  
DRAWN BY ABP  
CHECKED BY SMS

**E4.1**