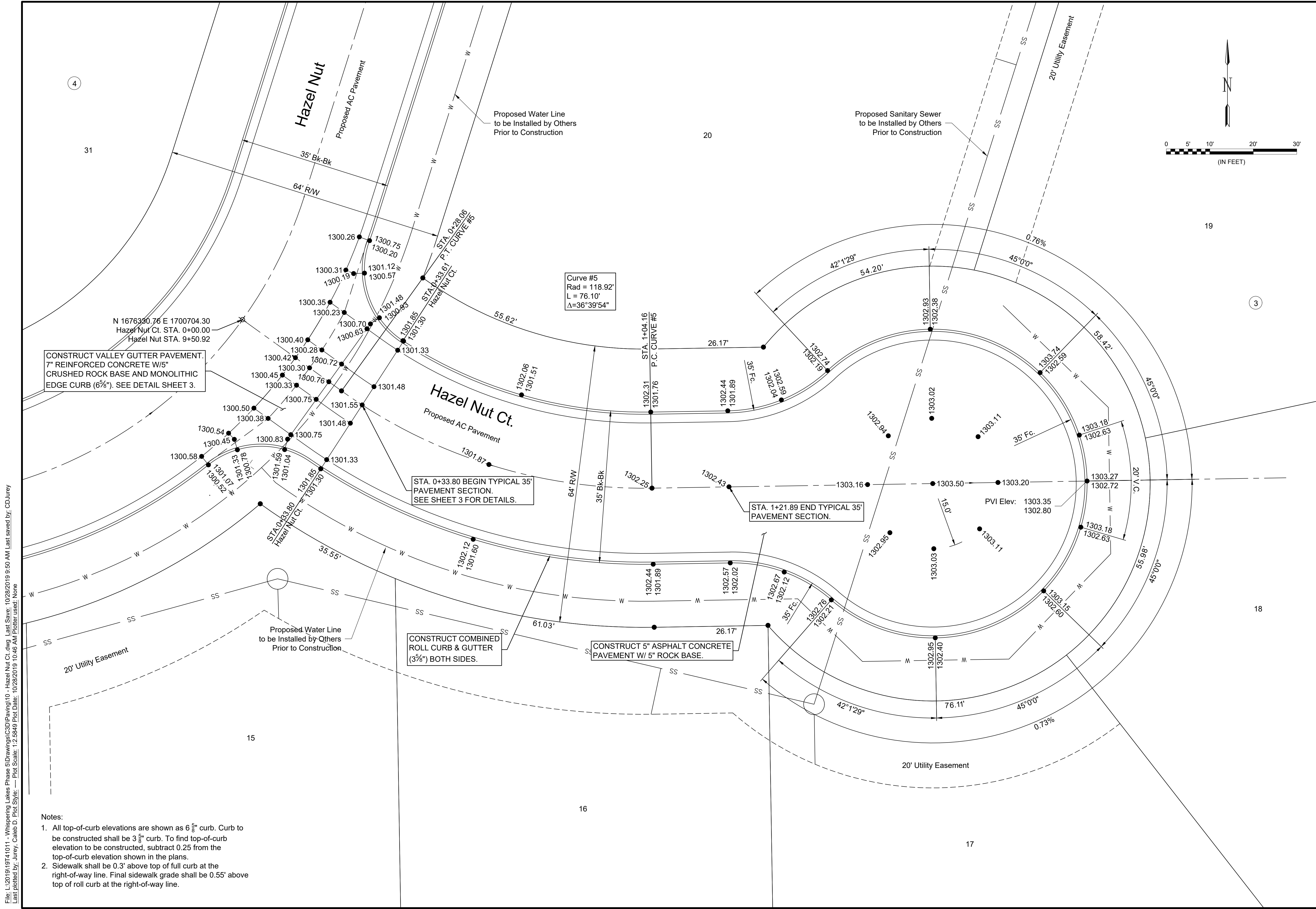
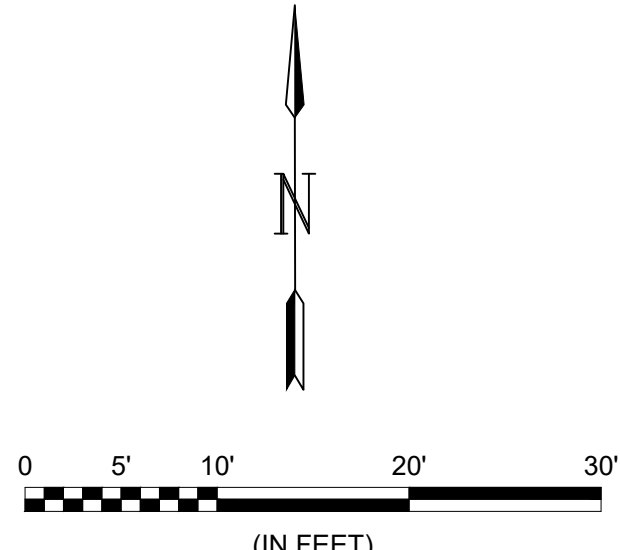




© 2019 GARVER, LLC  
 THIS DOCUMENT, ALONG WITH THE IDEAS AND DESIGNS CONVEYED HEREIN, SHALL BE CONSIDERED INSTRUMENTS OF PROFESSIONAL SERVICE AND ARE PROPERTY OF GARVER, LLC. ANY USE, REPRODUCTION, OR DISTRIBUTION OF THIS DOCUMENT, ALONG WITH THE IDEAS AND DESIGN CONTAINED HEREIN, IS PROHIBITED UNLESS AUTHORIZED IN WRITING BY GARVER, LLC OR EXPLICITLY ALLOWED IN THE GOVERNING PROFESSIONAL SERVICES AGREEMENT FOR THIS WORK.



Curve #5  
 Rad = 118.92'  
 L = 76.10'  
 Δ = 36°39'54"

CONSTRUCT VALLEY GUTTER PAVEMENT.  
 7" REINFORCED CONCRETE W/5"  
 CRUSHED ROCK BASE AND MONOLITHIC  
 EDGE CURB (6 3/8"). SEE DETAIL SHEET 3.

STA. 0+33.80 BEGIN TYPICAL 35'  
 PAVEMENT SECTION.  
 SEE SHEET 3 FOR DETAILS.

STA. 1+21.89 END TYPICAL 35'  
 PAVEMENT SECTION.

CONSTRUCT COMBINED  
 ROLL CURB & GUTTER  
 (3 3/8") BOTH SIDES.

CONSTRUCT 5" ASPHALT CONCRETE  
 PAVEMENT W/ 5" ROCK BASE.

- Notes:
- All top-of-curb elevations are shown as 6 3/8" curb. Curb to be constructed shall be 3 3/8" curb. To find top-of-curb elevation to be constructed, subtract 0.25 from the top-of-curb elevation shown in the plans.
  - Sidewalk shall be 0.3' above top of full curb at the right-of-way line. Final sidewalk grade shall be 0.55' above top of roll curb at the right-of-way line.

REV.	DATE	DESCRIPTION	BY



CITY OF WICHITA  
 WICHITA, KANSAS  
 PAVING & DRAINAGE  
 WHISPERING LAKES  
 ADDITION, PHASE 5

Hazel Nut Ct.

JOB NO.: 19T41011  
 DATE: OCT 19  
 DESIGNED BY: KWL  
 DRAWN BY: CDJ

BAR IS ONE INCH ON ORIGINAL DRAWING  
 IF NOT ONE INCH ON THIS SHEET, ADJUST SCALES ACCORDINGLY.

DRAWING NUMBER  
 \*\*\*\*\*

SHEET NUMBER **10** OF **24**

File: L:\2019\19T41011 - Whispering Lakes Phase 5\Drawings\C3D\Paving\10 - Hazel Nut Ct.dwg Last Save: 10/28/2019 9:50 AM Last saved by: CDJurey  
 Last plotted by: Jurey, Caleb D. Plot Date: 10/28/2019 10:46 AM Plotter used: None Plot Scale: 1:2.5849 Plot Style: --- Plot Scale: 1:2.5849