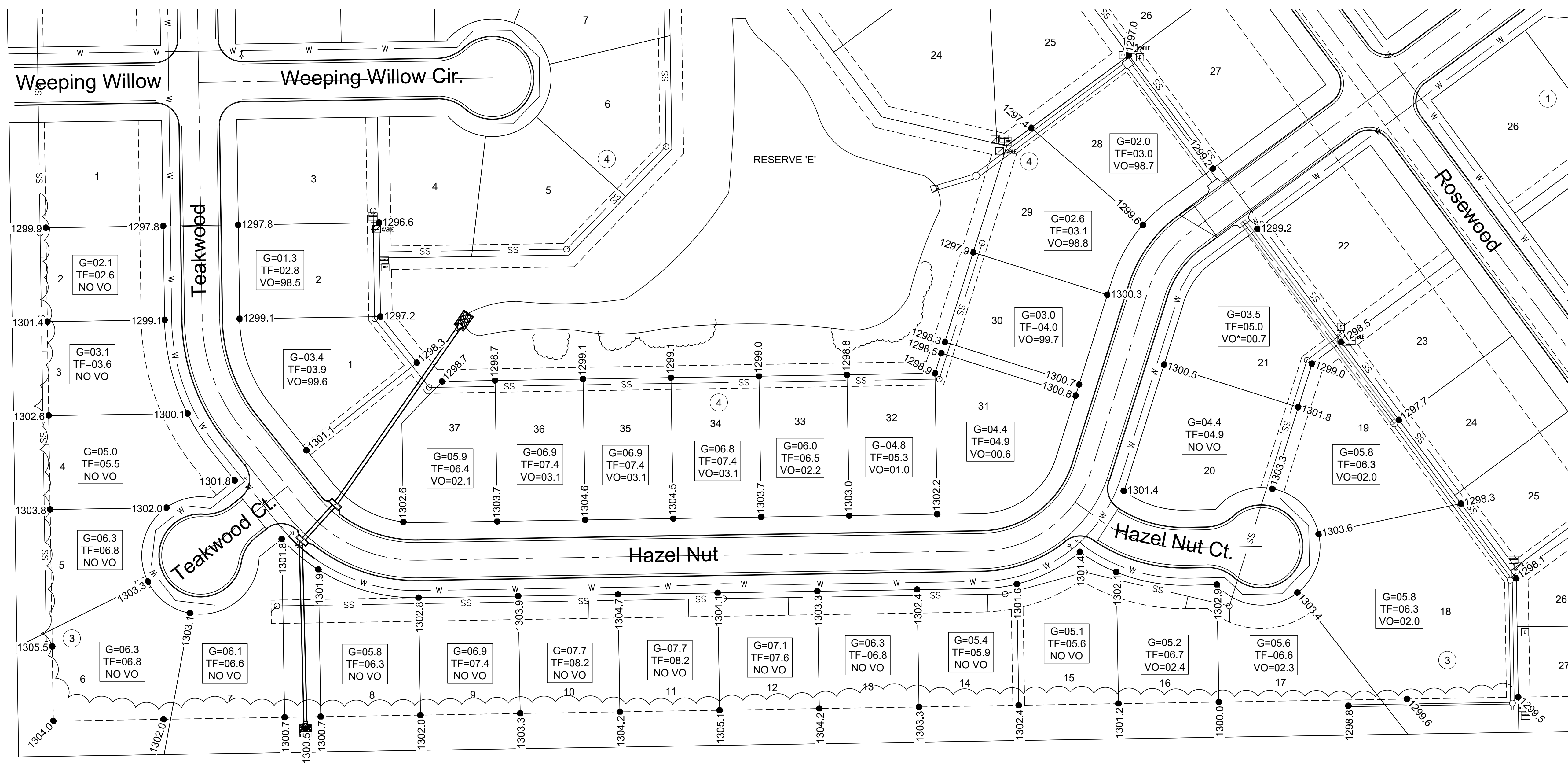
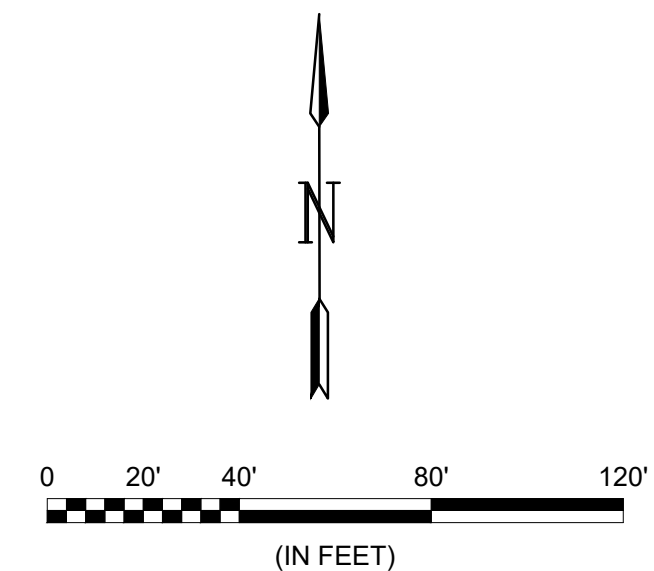




© 2019 GARVER, LLC  
 THIS DOCUMENT, ALONG WITH THE IDEAS AND DESIGNS CONVEYED HEREIN, SHALL BE CONSIDERED INSTRUMENTS OF PROFESSIONAL SERVICE AND ARE PROPERTY OF GARVER, LLC. ANY USE, REPRODUCTION, OR DISTRIBUTION OF THIS DOCUMENT, ALONG WITH THE IDEAS AND DESIGN CONTAINED HEREIN, IS PROHIBITED UNLESS AUTHORIZED IN WRITING BY GARVER, LLC OR EXPLICITLY ALLOWED IN THE GOVERNING PROFESSIONAL SERVICES AGREEMENT FOR THIS WORK.



\*Partial Viewout

**Benchmarks**

**BENCHMARK 1:** CHISELED SQUARE ON THE SIDE OF WOODCREEK STREET AT THE WEST CURB RETURN OF WOODCREEK AND ROSEWOOD ELEVATION = 1295.59 (NAVD88)

**BENCHMARK 2:** CHISELED SQUARE ON THE TOP OF CURB ON THE EAST SIDE OF ROSEWOOD STREET, AT THE SOUTHWEST CORNER OF LOT 36. ELEVATION = 1296.62 (NAVD88)

**MINIMUM BUILDING PAD ELEVATIONS**

BLOCK	LOT	ELEVATION
3	7-8	1300.1
3	18-21	1299.8
4	1-2, 28-37	1297.5

File: L:\2019\19T41011 - Whispering Lakes Phase 5\Drawings\C3D\Paving\15 - Four-Corner Grading Plan.dwg, Last Save: 10/28/2019 10:22 AM, Last saved by: CDJurey  
 Last plotted by: Jurey, Caleb D., Plot Date: 10/28/2019 10:47 AM, Plotter used: None, Plot Scale: 1:2,584.9

REV.	DATE	DESCRIPTION	BY



CITY OF WICHITA  
 WICHITA, KANSAS

**Four-Corner Grading Plan**

JOB NO.: 19T41011  
 DATE: OCT 19  
 DESIGNED BY: KWL  
 DRAWN BY: CDJ

BAR IS ONE INCH ON ORIGINAL DRAWING  
 IF NOT ONE INCH ON THIS SHEET, ADJUST SCALES ACCORDINGLY.

DRAWING NUMBER  
 \*\*\*\*\*