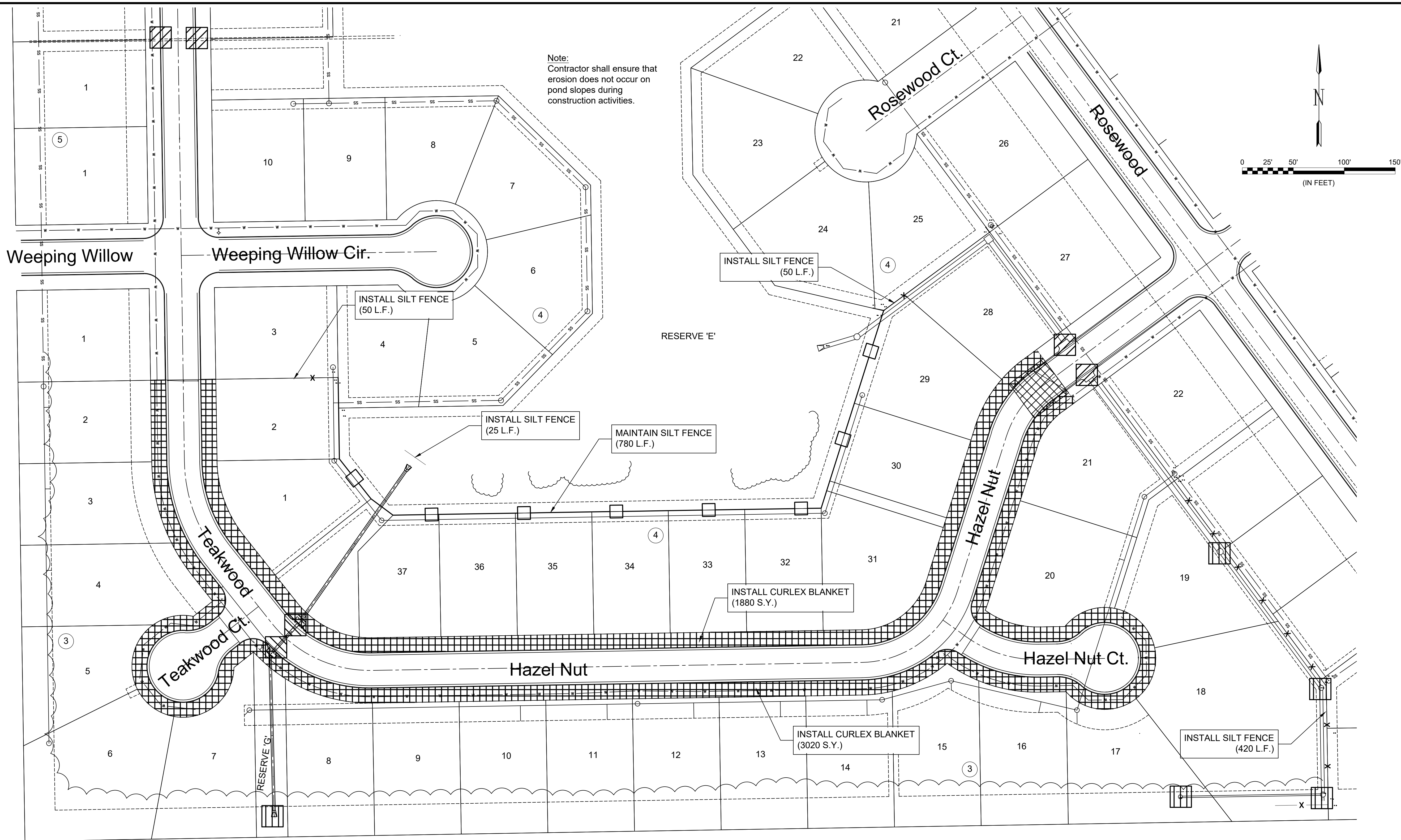


File: L:\2019\19T41011 - Whispering Lakes Phase 5\Drawings\C3D\Paving\18 - Erosion Control.dwg Last Save: 10/28/2019 10:29 AM Last saved by: CDJurey
 Last plotted by: Jurey, Caleb D. Plot Date: 10/28/2019 10:47 AM Plotter used: None



GARVER
 © 2019 GARVER, LLC
 THIS DOCUMENT, ALONG WITH THE IDEAS AND DESIGNS CONVEYED HEREIN, SHALL BE CONSIDERED INSTRUMENTS OF PROFESSIONAL SERVICE AND ARE PROPERTY OF GARVER, LLC. ANY USE, REPRODUCTION, OR DISTRIBUTION OF THIS DOCUMENT, ALONG WITH THE IDEAS AND DESIGN CONTAINED HEREIN, IS PROHIBITED UNLESS AUTHORIZED IN WRITING BY GARVER, LLC OR EXPLICITLY ALLOWED IN THE GOVERNING PROFESSIONAL SERVICES AGREEMENT FOR THIS WORK.

REV.	DATE	DESCRIPTION	BY



CITY OF WICHITA
 WICHITA, KANSAS
 PAVING & DRAINAGE
 WHISPERING LAKES
 ADDITION, PHASE 5

Erosion Control Plan

JOB NO.: 19T41011
 DATE: OCT 19
 DESIGNED BY: KWL
 DRAWN BY: CDJ

BAR IS ONE INCH ON ORIGINAL DRAWING
 IF NOT ONE INCH ON THIS SHEET, ADJUST SCALES ACCORDINGLY.

DRAWING NUMBER

SHEET NUMBER **18** OF **24**

- x — INSTALL Silt Fence (545 L.F.)
- [Vertical Lines] INSTALL Area Inlet Protection (5 Ea.)
- [Diagonal Lines] INSTALL Curb Inlet Protection (2 Ea.)
- [Grid] INSTALL Curlex Blanket (4900 S.Y.)
- [Square] MAINTAIN Silt Fence (780 L.F.)
- [Cross-hatch] MAINTAIN Construction Entrance (1 Ea.)
- [Diagonal Lines] MAINTAIN Curb Inlet Protection (4 Ea.)

- Seeding Notes:**
- All disturbed areas shall be seeded, fertilized, and mulched according to City of Wichita specifications.
 - All disturbed areas in Rights-of-Way and Reserves 'E' and 'G' shall be seeded with Fescue seeding mix. If the area is disturbed after seeding, the Contractor shall re-seed, -fertilize, and -mulch the affected area.
 - The Contractor may use a Rye mix as a temporary seeding mix during construction activities, but all Rights-of-Way and Reserves 'E' and 'G' must have a Fescue seeding mix at the completion of construction activities. All other areas may be seeded using a Rye mix.
 - All seeding shall be bid as 'Project Seeding, L.S.'

Seeding Schedule				
Seeding Mix	Application Rate	Fertilizer	Application Rate	Seeding Season
Fescue	8 lb PLS 1000 sf	12-24-12 N-P-K	45 lb/Ac	Dec 1 - May 1 or Aug 15 - Oct 15
Rye	5 lb 1000 sf			

Seeding Areas:
 (For Information Only)

Fescue:	15,300 S.Y.
Rye:	118,750 S.Y.