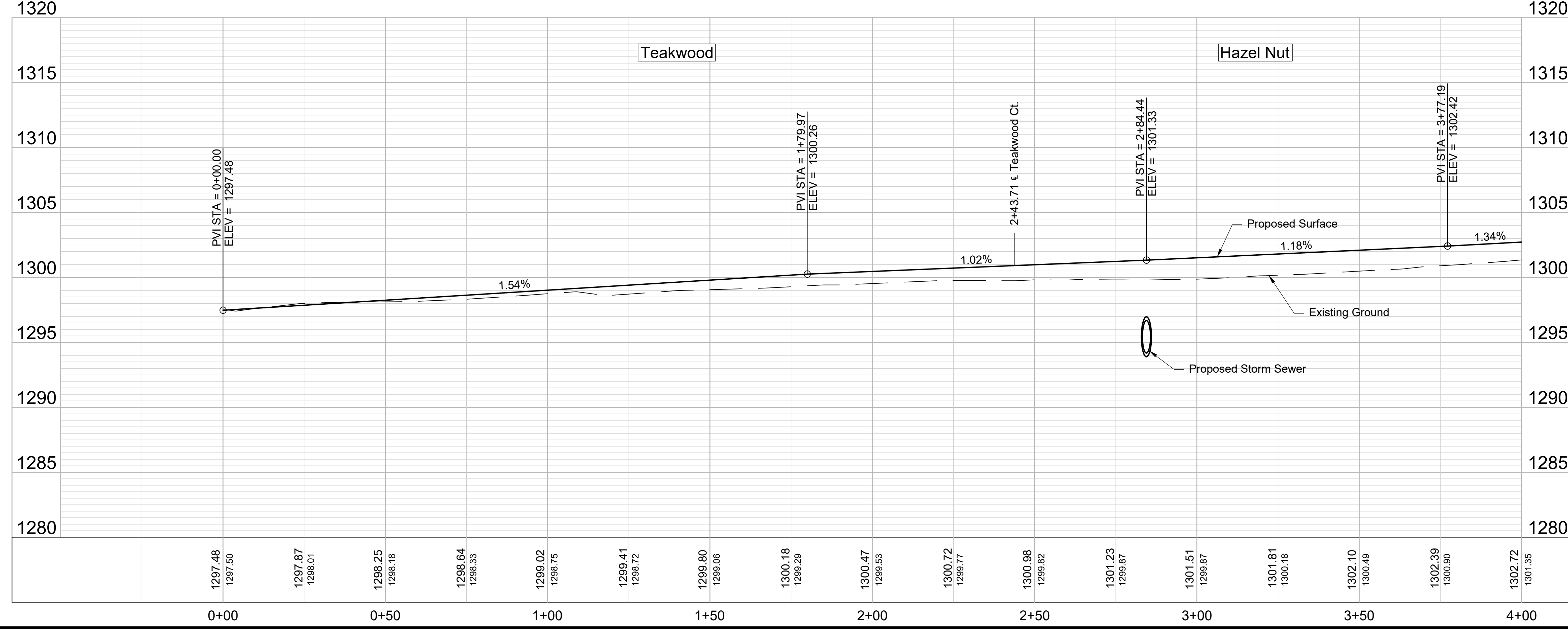
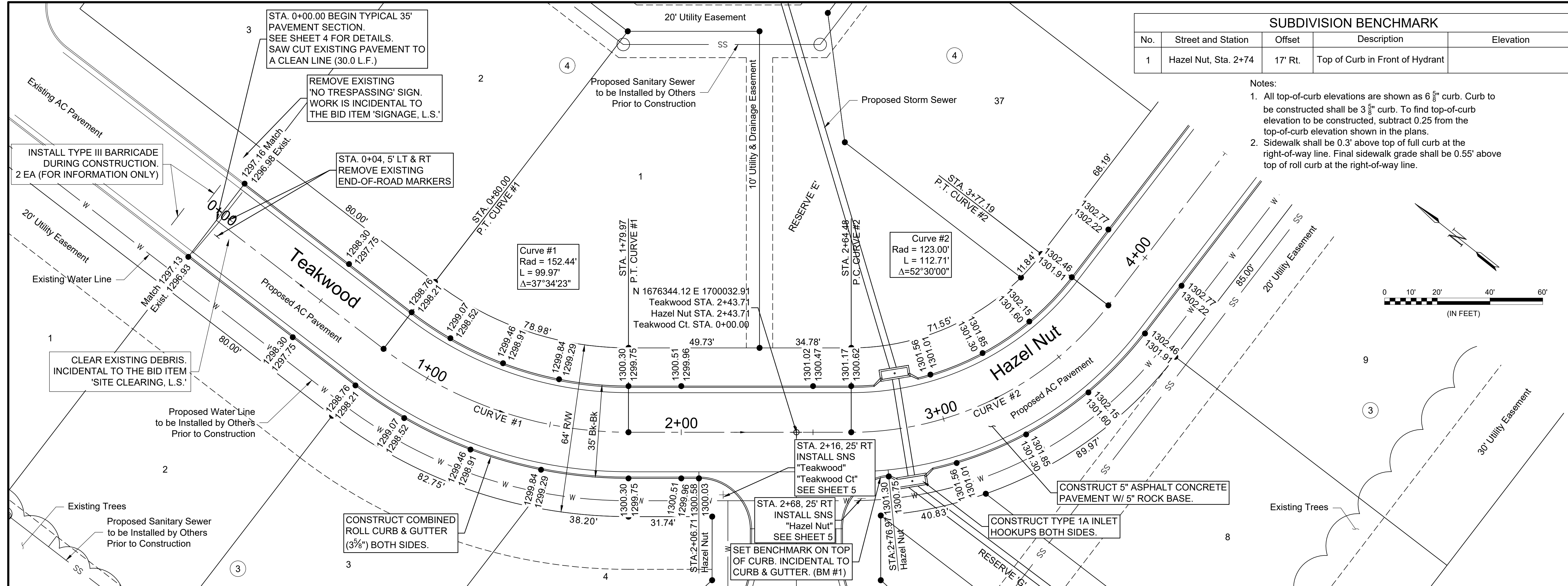


| SUBDIVISION BENCHMARK | | | | |
|-----------------------|----------------------|---------|---------------------------------|-----------|
| No. | Street and Station | Offset | Description | Elevation |
| 1 | Hazel Nut, Sta. 2+74 | 17' Rt. | Top of Curb in Front of Hydrant | |

- Notes:
- All top-of-curb elevations are shown as 6" curb. Curb to be constructed shall be 3" curb. To find top-of-curb elevation to be constructed, subtract 0.25 from the top-of-curb elevation shown in the plans.
 - Sidewalk shall be 0.3' above top of full curb at the right-of-way line. Final sidewalk grade shall be 0.55' above top of roll curb at the right-of-way line.



File: L:\2019\19T41011 - Whispering Lakes Phase 5\Drawings\C3D\Paving06 - Hazel Nut.dwg Last Save: 10/28/2019 9:23 AM Last saved by: CDJurey
 Last plotted by: Jurey, Caleb D. Plot Style: --- Plot Scale: 1:2.5849 Plot Date: 10/28/2019 10:46 AM Plotter used: None

| REV. | DATE | DESCRIPTION | BY |
|------|------|-------------|----|
| | | | |
| | | | |
| | | | |



CITY OF WICHITA
WICHITA, KANSAS

PAVING & DRAINAGE
WHISPERING LAKES
ADDITION, PHASE 5

Hazel Nut

JOB NO.: 19T41011
DATE: OCT 19
DESIGNED BY: KWL
DRAWN BY: CDJ

BAR IS ONE INCH ON ORIGINAL DRAWING
IF NOT ONE INCH ON THIS SHEET, ADJUST SCALES ACCORDINGLY.

DRAWING NUMBER

SHEET NUMBER **6** OF **24**