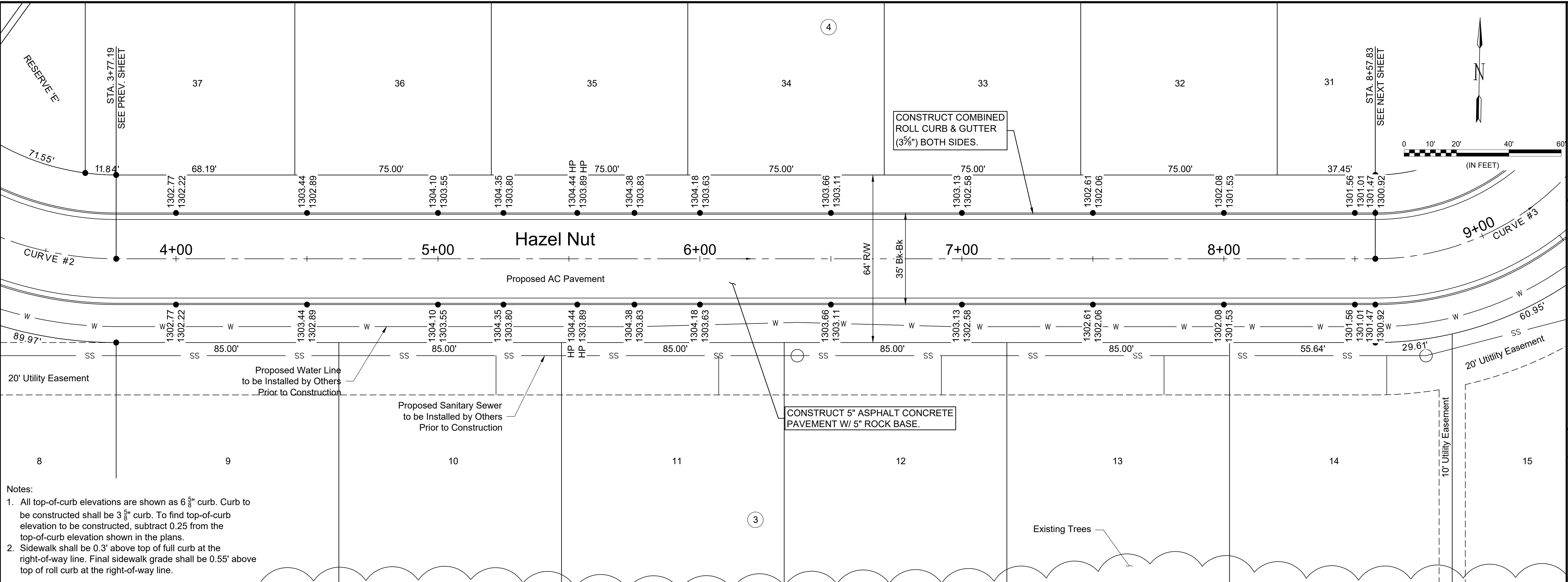
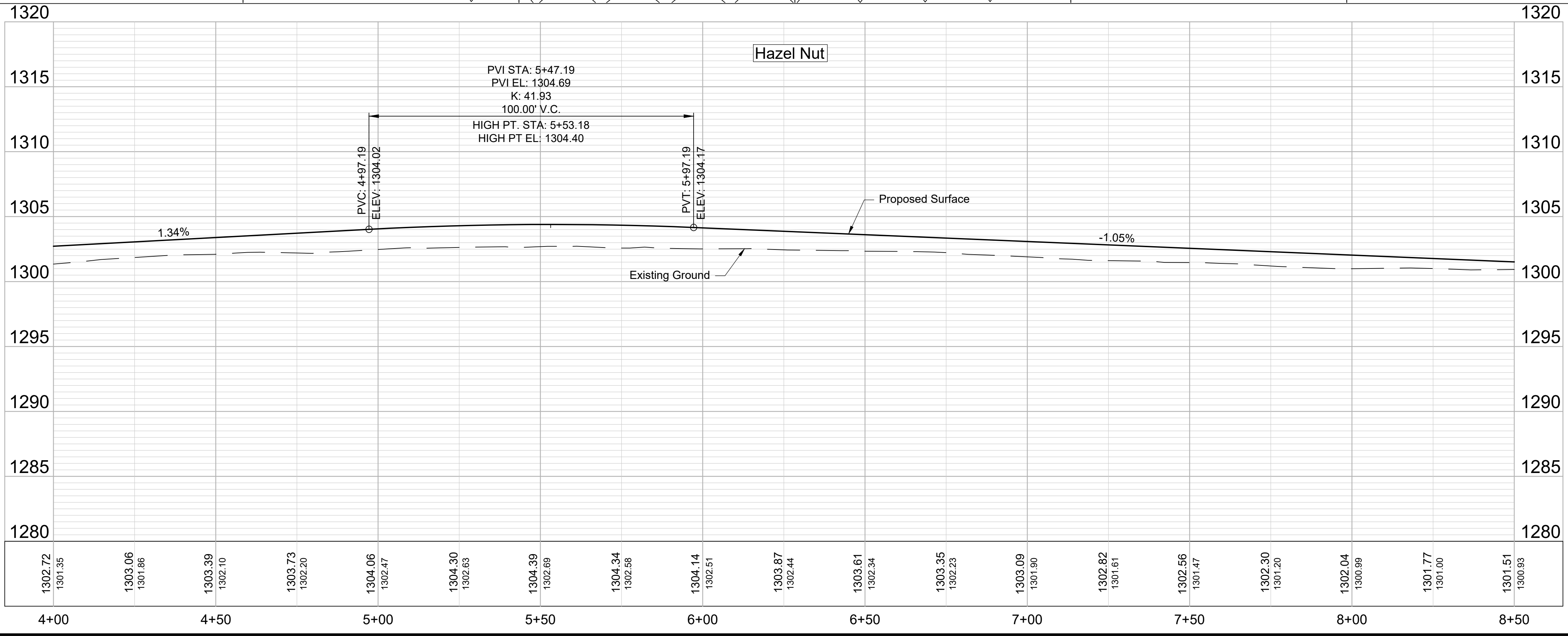




© 2019 GARVER, LLC
 THIS DOCUMENT, ALONG WITH THE IDEAS AND DESIGNS CONVEYED HEREIN, SHALL BE CONSIDERED INSTRUMENTS OF PROFESSIONAL SERVICE AND ARE PROPERTY OF GARVER, LLC. ANY USE, REPRODUCTION, OR DISTRIBUTION OF THIS DOCUMENT, ALONG WITH THE IDEAS AND DESIGN CONTAINED HEREIN, IS PROHIBITED UNLESS AUTHORIZED IN WRITING BY GARVER, LLC OR EXPLICITLY ALLOWED IN THE GOVERNING PROFESSIONAL SERVICES AGREEMENT FOR THIS WORK.



- Notes:
- All top-of-curb elevations are shown as 6⁵/₈" curb. Curb to be constructed shall be 3⁵/₈" curb. To find top-of-curb elevation to be constructed, subtract 0.25 from the top-of-curb elevation shown in the plans.
 - Sidewalk shall be 0.3' above top of full curb at the right-of-way line. Final sidewalk grade shall be 0.55' above top of roll curb at the right-of-way line.



File: L:\2019\19T41011 - Whispering Lakes Phase 5\Drawings\C3D\Paving07 - Hazel Nut.dwg Last Save: 10/28/2019 9:33 AM Last saved by: CDJurey
 Last plotted by: Jurey, Caleb D. Plot Style: --- Plot Scale: 1:2.5849 Plot Date: 10/28/2019 10:46 AM Plotter used: None

REV.	DATE	DESCRIPTION	BY



CITY OF WICHITA
 WICHITA, KANSAS
**PAVING & DRAINAGE
 WHISPERING LAKES
 ADDITION, PHASE 5**

Hazel Nut

JOB NO.: 19T41011
 DATE: OCT 19
 DESIGNED BY: KWL
 DRAWN BY: CDJ

BAR IS ONE INCH ON ORIGINAL DRAWING
 0 1" IF NOT ONE INCH ON THIS SHEET, ADJUST SCALES ACCORDINGLY.

DRAWING NUMBER

SHEET NUMBER **7** OF **24**