

Sta. 154+11.84
Remove Existing Bridge 2 - 16'-6"
Reinf. Conc. Slab Spans (RCSS) 11' Roadway
N=1697228.76
E=1694313.16
See Sht. No. 90

Sta. 154+12.00
Construct 30' Pre-fabricated
Weathering Steel Truss Bridge
Conc. U-type Abutments on
Pile Bent (Bearing) 12' Roadway
N=1697228.76
E=1694313.32
See Sht. No. 69-75,84-90

Construct
Bridge Approach Slab Footing
N=1697230.97
E=1694338.18
See Sht. No. 37-39,90

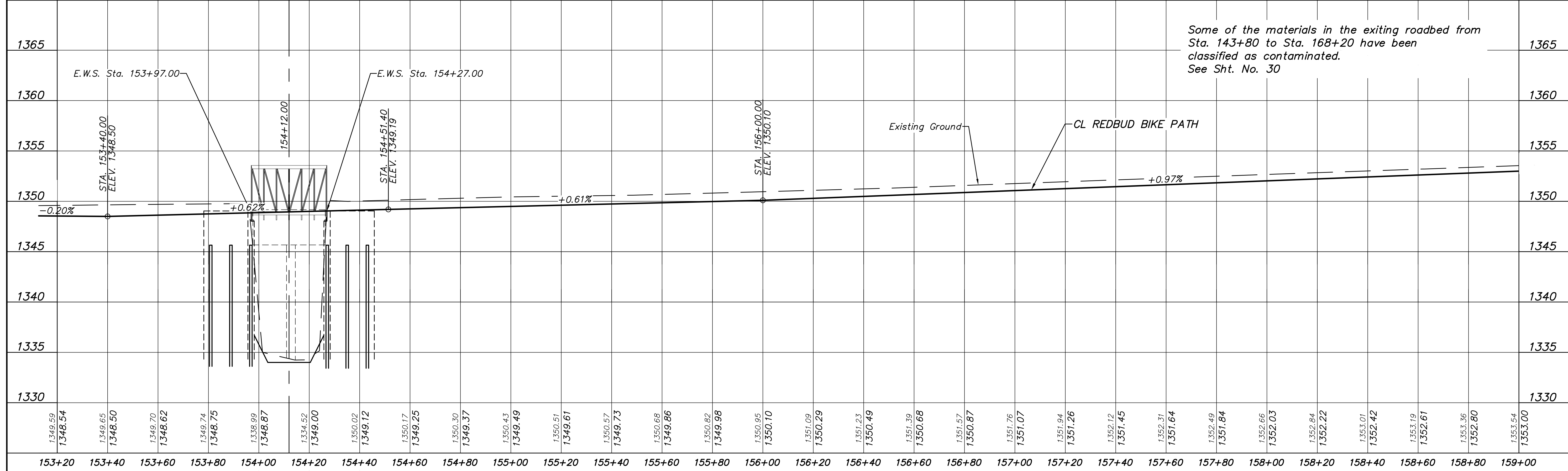
Construct
Bridge Approach Slab Footing
N=1697224.52
E=1694290.14
See Sht. No. 37-39,90

Sta. 154+45.75
Begin Typical Section,
Concrete Pavement (6" Uniform)(AE)
N=1697229.34
E=1694347.07
See Sht. No. 2,90

Sta. 153+78.25
End Typical Section,
Concrete Pavement (6" Uniform)(AE)
N=1697228.18
E=1694279.58
See Sht. No. 2,90

Sta. 156+90.00, 15.00' Lt.
Construct 9'x13' Rest Area, 13.0 S.Y.
Concrete Pavement (6" Uniform)(AE)
N=1697248.53
E=1694591.03
See Sht. No. 2,90,109

NOTE:
ADDITIONAL TREE REMOVAL NOT ALLOWED.
TRIM WITH APPROVAL OF ENGINEER.



Some of the materials in the exiting roadbed from
Sta. 143+80 to Sta. 168+20 have been
classified as contaminated.
See Sht. No. 30

REDBUD BIKE PATH K-96 TO 159TH STREET EAST PLAN & PROFILE CITY OF WICHITA, KANSAS GARY JANZEN, P.E. - CITY ENGINEER C.O.W. Project #172-85360, O.C.A. #107125	No.	Date	By	Revision
	Approved	Approved	Approved	Approved
	No.	Date	By	Revision
	Approved	Approved	Approved	Approved
POE & ASSOCIATES, INC. CONSULTING ENGINEERS 544 West Douglas Avenue Wichita, KS 67203 Phone 316/685-4114 FAX 316/685-4444	SHEET 222 OF 15			
Engineer: T. EVANS Designer: J. UNRUH Dwg: P:\02127 Redbud Wichita\DWG\02127-BASE-tal grade.dwg Poe Job No: 102127 Date: SEPTEMBER 2018	SHEET 222 OF 15			