

KANSAS GAS & ELEC. CO.
 RIGHT-OF-WAY EASEMENT
 BOOK 594 PAGE 586

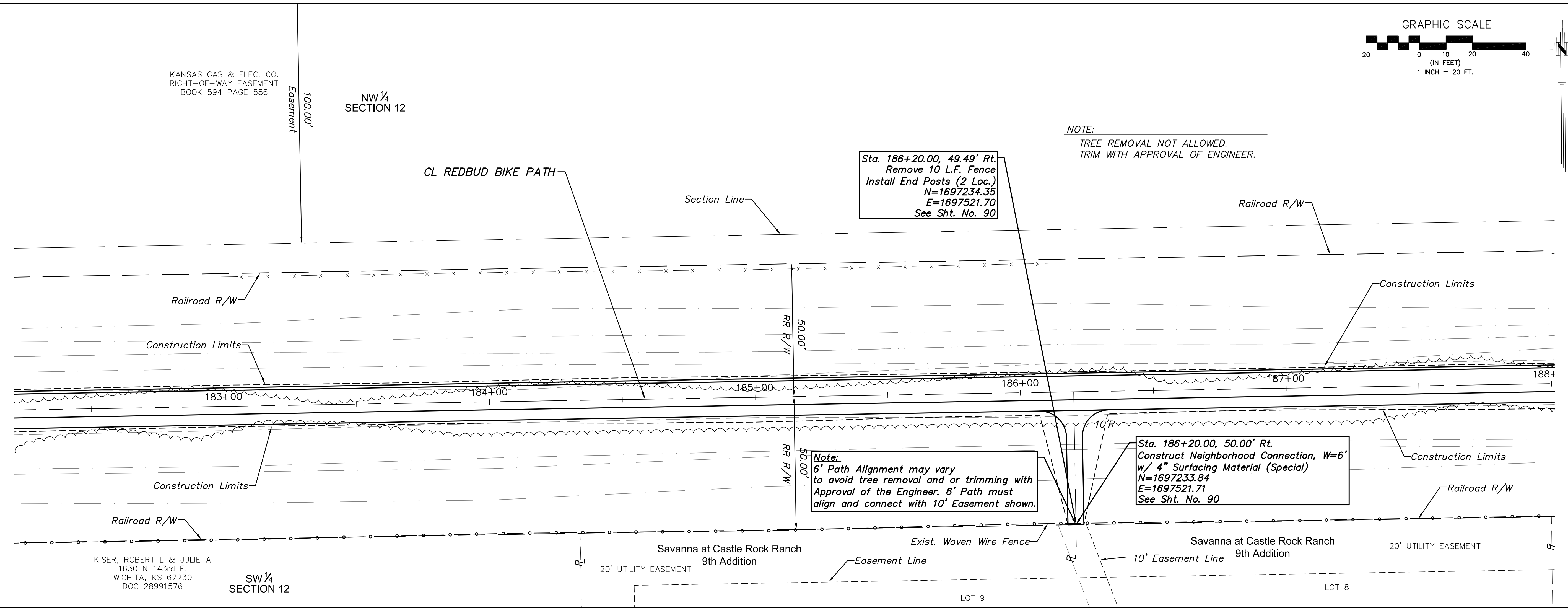
NW 1/4
 SECTION 12

NOTE:
 TREE REMOVAL NOT ALLOWED.
 TRIM WITH APPROVAL OF ENGINEER.

Sta. 186+20.00, 49.49' Rt.
 Remove 10 L.F. Fence
 Install End Posts (2 Loc.)
 N=1697234.35
 E=1697521.70
 See Sht. No. 90

Note:
 6' Path Alignment may vary
 to avoid tree removal and or trimming with
 Approval of the Engineer. 6' Path must
 align and connect with 10' Easement shown.

Sta. 186+20.00, 50.00' Rt.
 Construct Neighborhood Connection, W=6'
 w/ 4" Surfacing Material (Special)
 N=1697233.84
 E=1697521.71
 See Sht. No. 90



KISER, ROBERT L & JULIE A
 1630 N 143rd E.
 WICHITA, KS 67230
 DOC 28991576

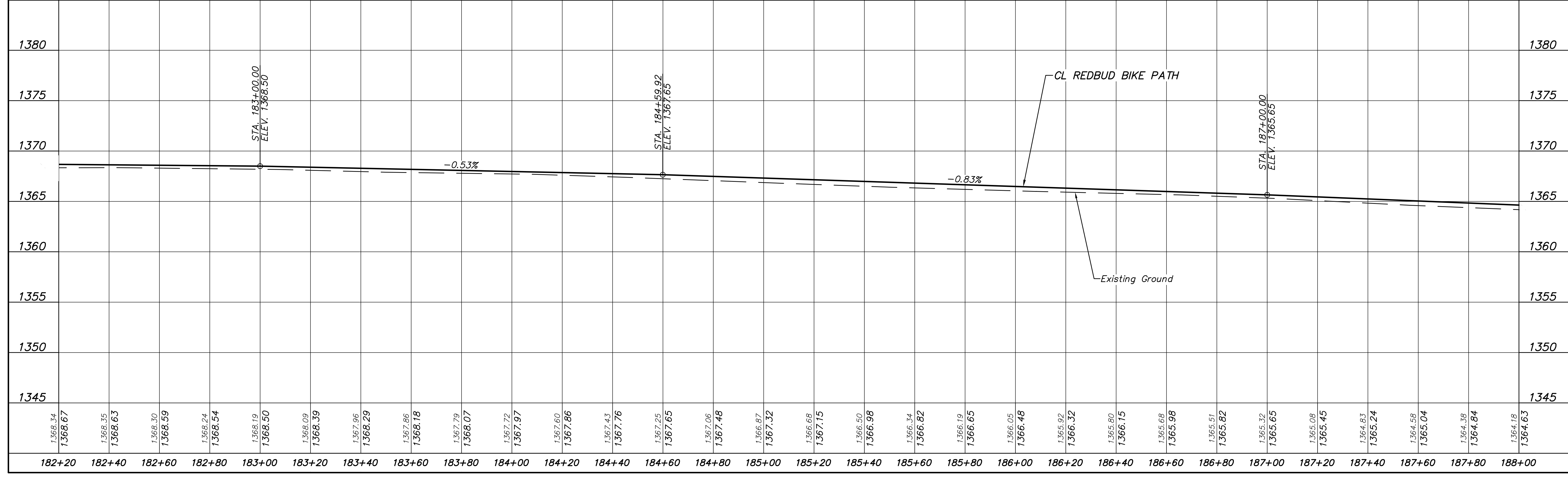
SW 1/4
 SECTION 12

Savanna at Castle Rock Ranch
 9th Addition

Exist. Woven Wire Fence

Savanna at Castle Rock Ranch
 9th Addition

20' UTILITY EASEMENT



REDBUD BIKE PATH
 K-96 TO 159TH STREET EAST
 PLAN & PROFILE

CITY OF WICHITA, KANSAS
 GARY JANZEN, P.E. - CITY ENGINEER
 C.O.W. Project #472-65360, C.C.A. #707125

POE & ASSOCIATES, INC.
 CONSULTING ENGINEERS
 544 West Douglas Avenue
 Wichita, KS 67203
 Phone 316/685-4114 FAX 316/685-4444

THOMAS S. EVANS
 LICENSED PROFESSIONAL ENGINEER
 24211
 KANSAS

Engineer: T. EVANS
 Designer: J. UNRUH
 Dwg: P:\02127 Redbud Wichita\DWG\02127-BASE-tal grade down2
 Pore Job No: 102127
 Date: SEPTEMBER 2018

Sheet of 222