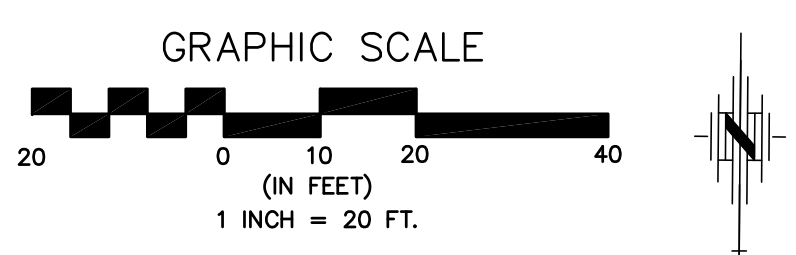


NW 1/4 SECTION 12

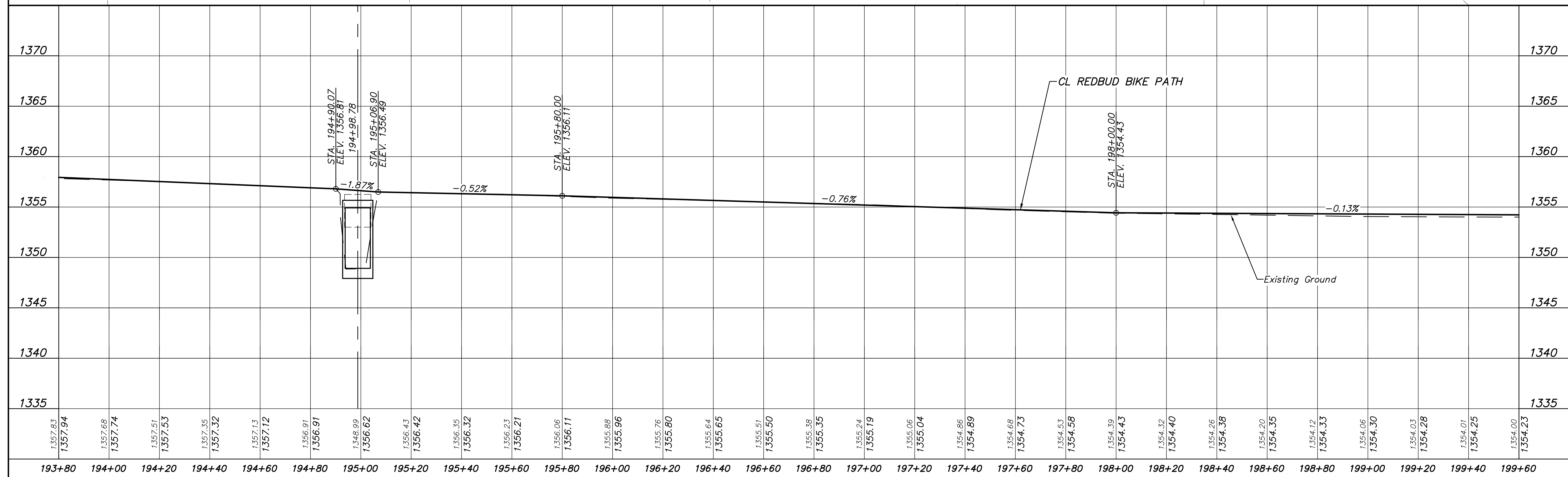
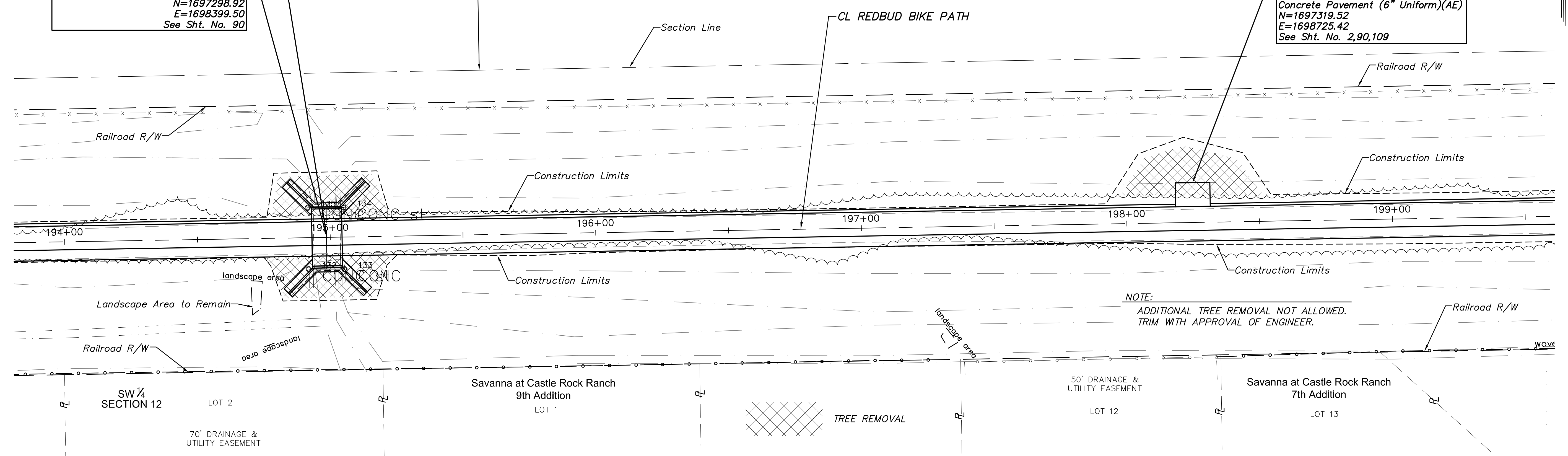
PRILL SHANE J. & KIANNE K. REV. TRUST
15001 E. 21st ST.
WICHITA, KS 67230
DOC 29049004



Sta. 194+98.78
Construct 10'x6'x23' RFB
w/ Headwalls & Handrail
N=1697298.92
E=1698399.50
See Sht. No. 54-56,60,90

Sta. 194+98.78
Remove Existing Structure 1 - 10.5'
Reinf. Conc. Slab Spans (RCSS) x 23'
N=1697298.92
E=1698399.50
See Sht. No. 90

Sta. 198+25.00, 15.00' Lt.
Construct 9'x13' Rest Area, 13.0 S.Y.
Concrete Pavement (6" Uniform)(AE)
N=1697319.52
E=1698725.42
See Sht. No. 2,90,109



REDBUD BIKE PATH
K-96 TO 159TH STREET EAST

PLAN & PROFILE

CITY OF WICHITA, KANSAS
CARY JANZEN, P.E. - CITY ENGINEER
C.O.W. Project #172-85360, C.C.A. #707125

POE & ASSOCIATES, INC.
CONSULTING ENGINEERS
544 West Douglas Avenue
Wichita, KS 67203
Phone 316/685-4114 FAX 316/685-4444

THOMAS S. EVANS
LICENSED PROFESSIONAL ENGINEER
24211
KANSAS

Engineer: T. EVANS
Designer: J. UNRUH
Dwg: P:\02127 Redbud Wichita\DWG\02127-BASE-tal grade.dwg
Poe Job No: 102127
Date: SEPTEMBER 2018

Sheet of 222