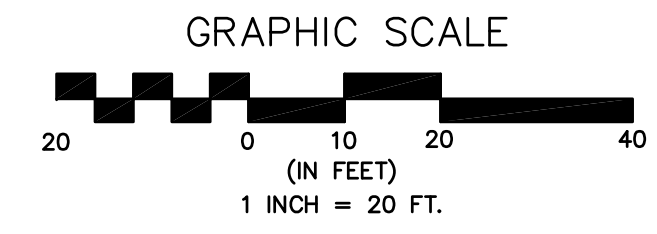


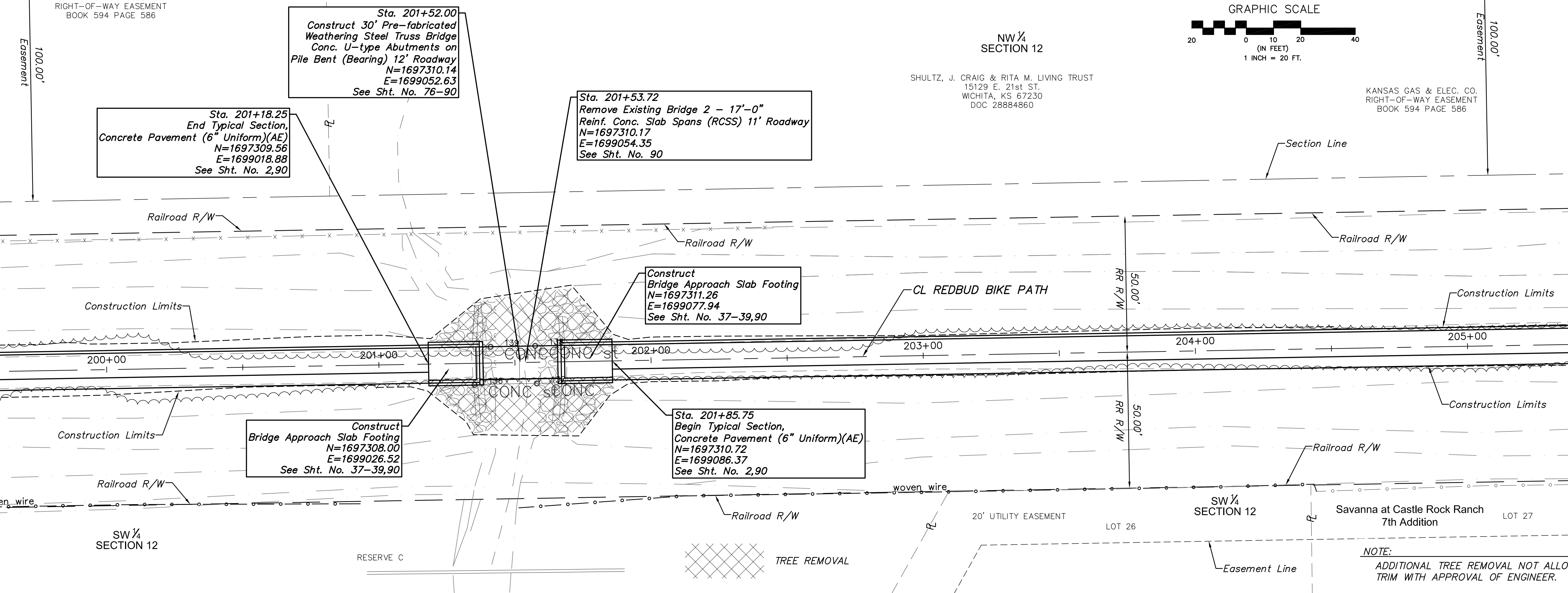
KANSAS GAS & ELEC. CO.  
RIGHT-OF-WAY EASEMENT  
BOOK 594 PAGE 586



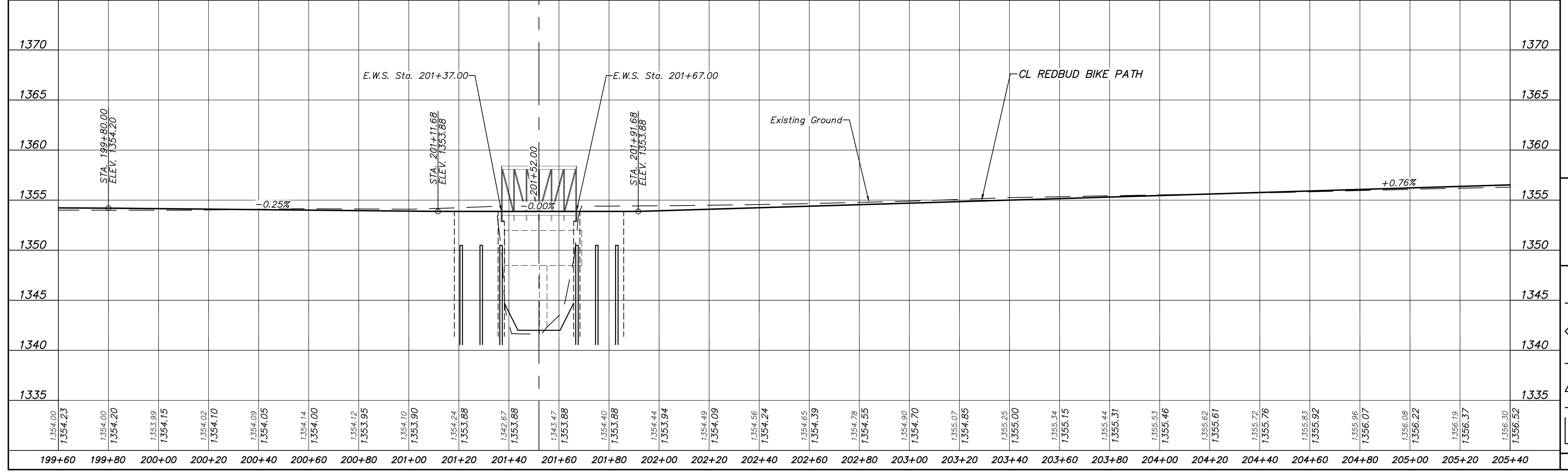
NW 1/4  
SECTION 12

SHULTZ, J. CRAIG & RITA M. LIVING TRUST  
15129 E. 21st ST.  
WICHITA, KS 67230  
DOC 28884860

KANSAS GAS & ELEC. CO.  
RIGHT-OF-WAY EASEMENT  
BOOK 594 PAGE 586



NOTE:  
ADDITIONAL TREE REMOVAL NOT ALLOWED.  
TRIM WITH APPROVAL OF ENGINEER.

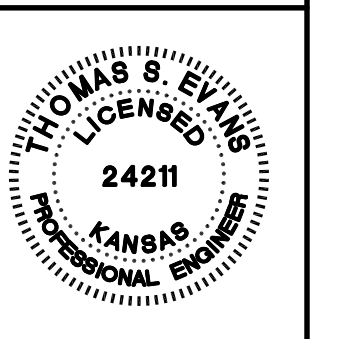


By	Approved	Revision
Date		

No.	
-----	--

REDBUD BIKE PATH EAST  
K-96 TO 159TH STREET EAST  
PLAN & PROFILE  
CITY OF WICHITA, KANSAS  
CARY JANZEN, P.E. - CITY ENGINEER  
C.O.N. Project #172-85360, O.C.A. #707125

POE & ASSOCIATES, INC.  
CONSULTING ENGINEERS  
544 West Douglas Avenue  
Wichita, KS 67203  
Phone 316/685-4114 FAX 316/685-4444



Engineer: T. EVANS  
Designer: J. UNRUH  
Dwg: P:\02127 Redbud Wichita\DWG\02127-BASE-tal grade down2  
Poe Job No: 102127  
Date: SEPTEMBER 2018  
Sheet of 222