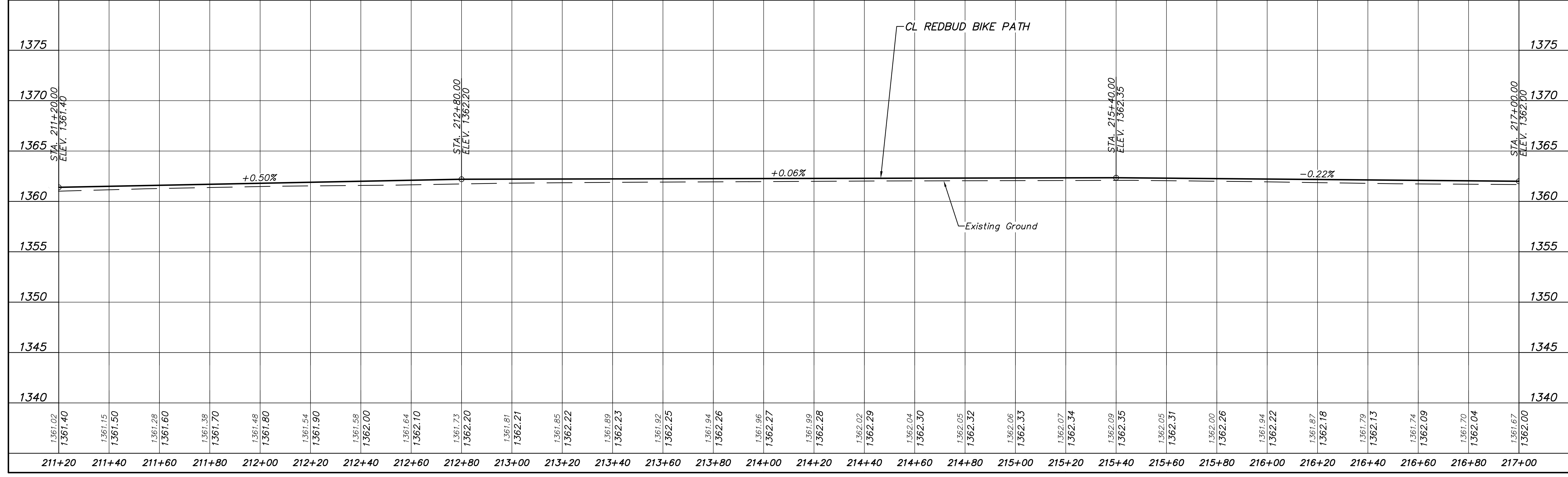
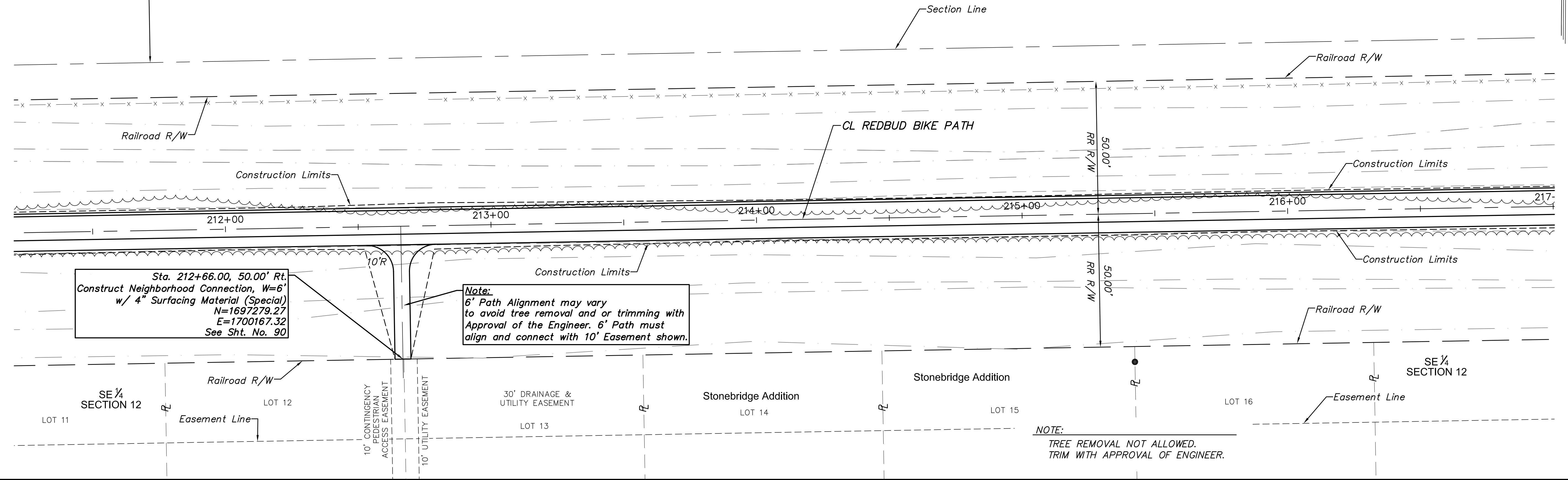


KANSAS GAS & ELEC. CO.  
RIGHT-OF-WAY EASEMENT  
BOOK 594 PAGE 586

MURPHY, D. MICHAEL REV. TRUST  
14021 NORTH POINT DR. E.  
WICHITA, KS 67230  
DOC 29093646



REDBUD BIKE PATH K-96 TO 159TH STREET EAST

PLAN & PROFILE

CITY OF WICHITA, KANSAS

CARY JANZEN, P.E. - CITY ENGINEER

C.O.W. Project #472-65360, O.C.A. #707125

---

POE & ASSOCIATES, INC.  
CONSULTING ENGINEERS

544 West Douglas Avenue  
Wichita, KS 67203  
Phone 316/685-4114 FAX 316/685-4444

---

Engineer: T. EVANS  
Designer: J. UNRUH  
Dwg: P: 102127 Redbud Wichita DWG 102127-BASE - rail grade down2  
Poe Job No: 102127  
Date: SEPTEMBER 2018

Sheet of 222