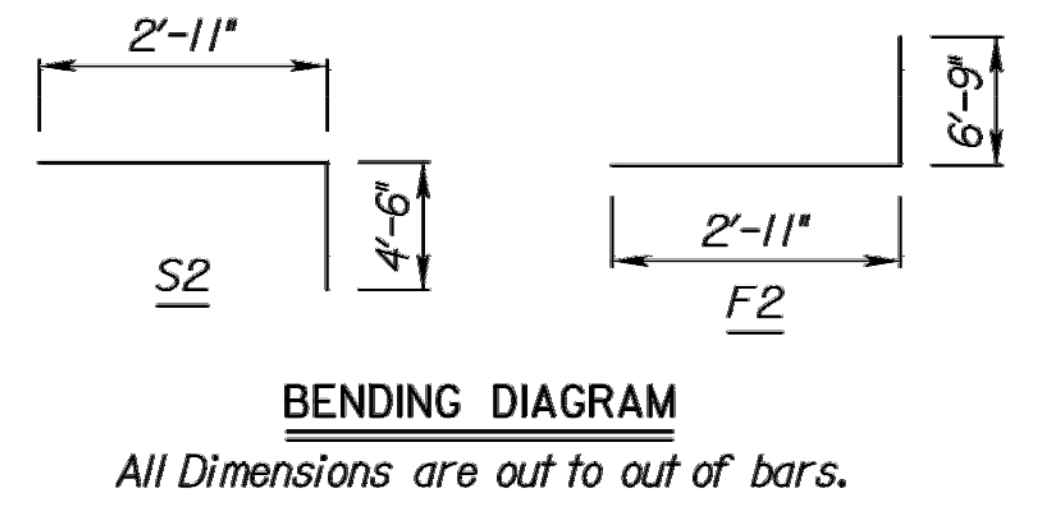
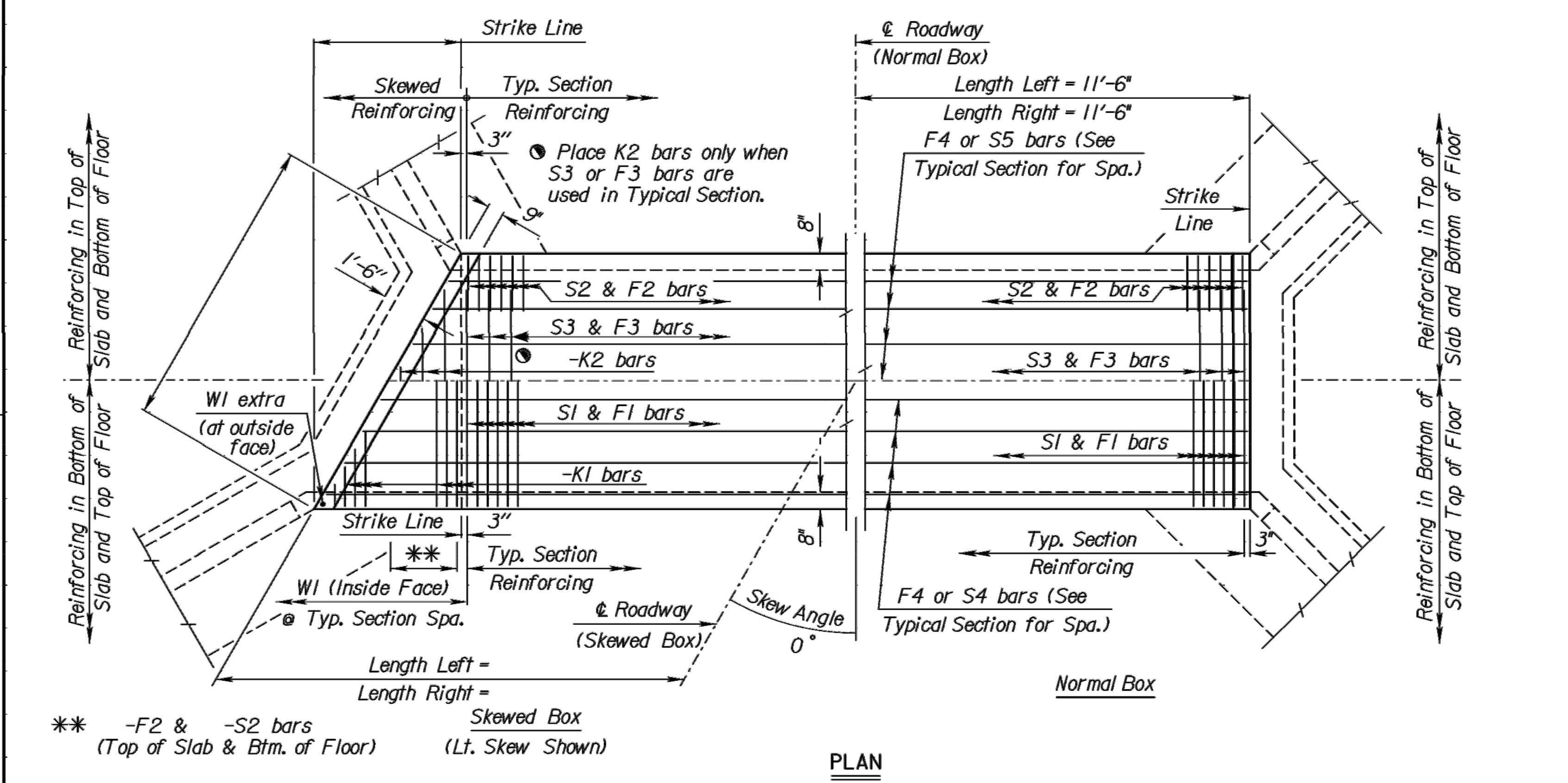
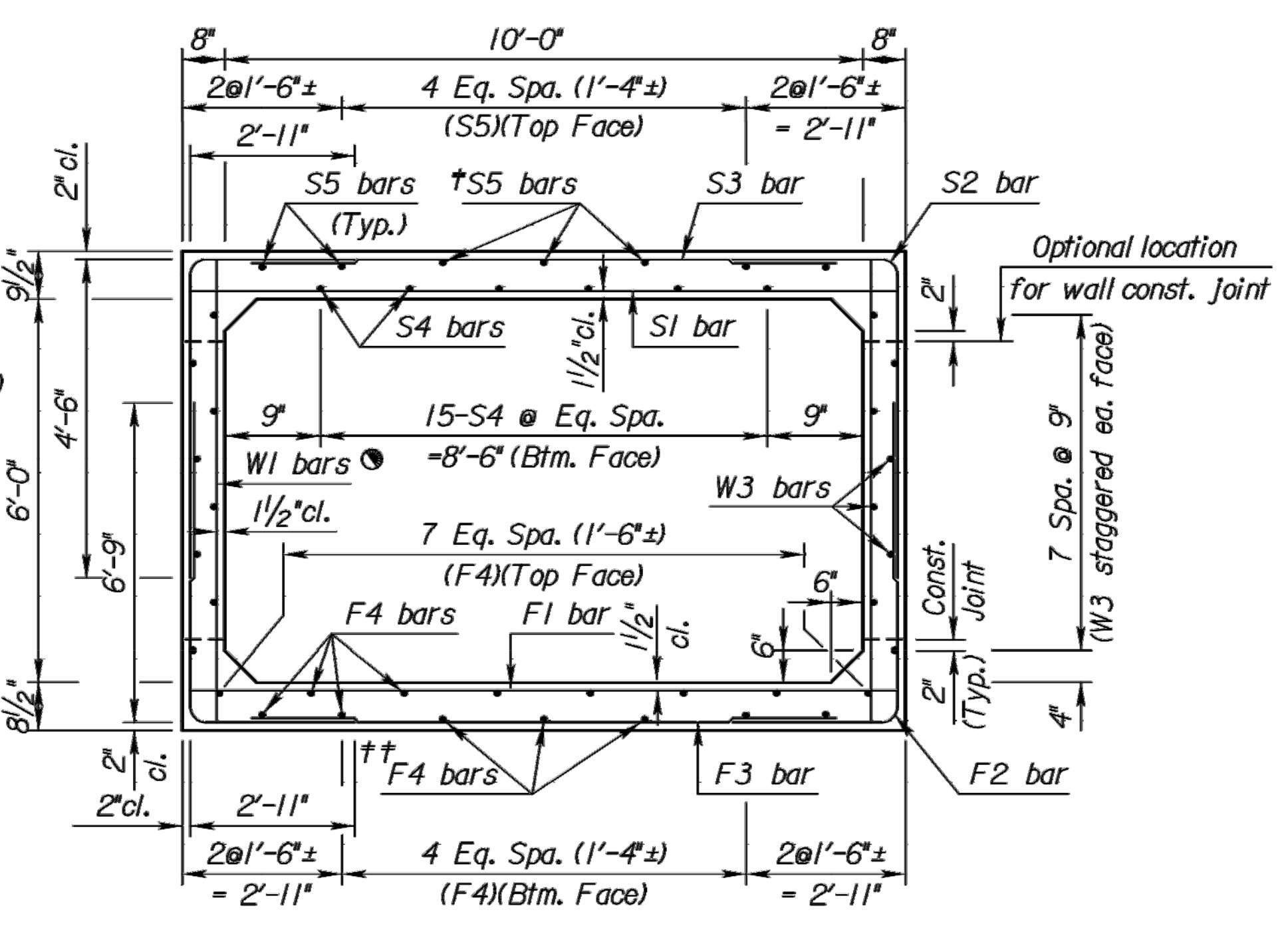
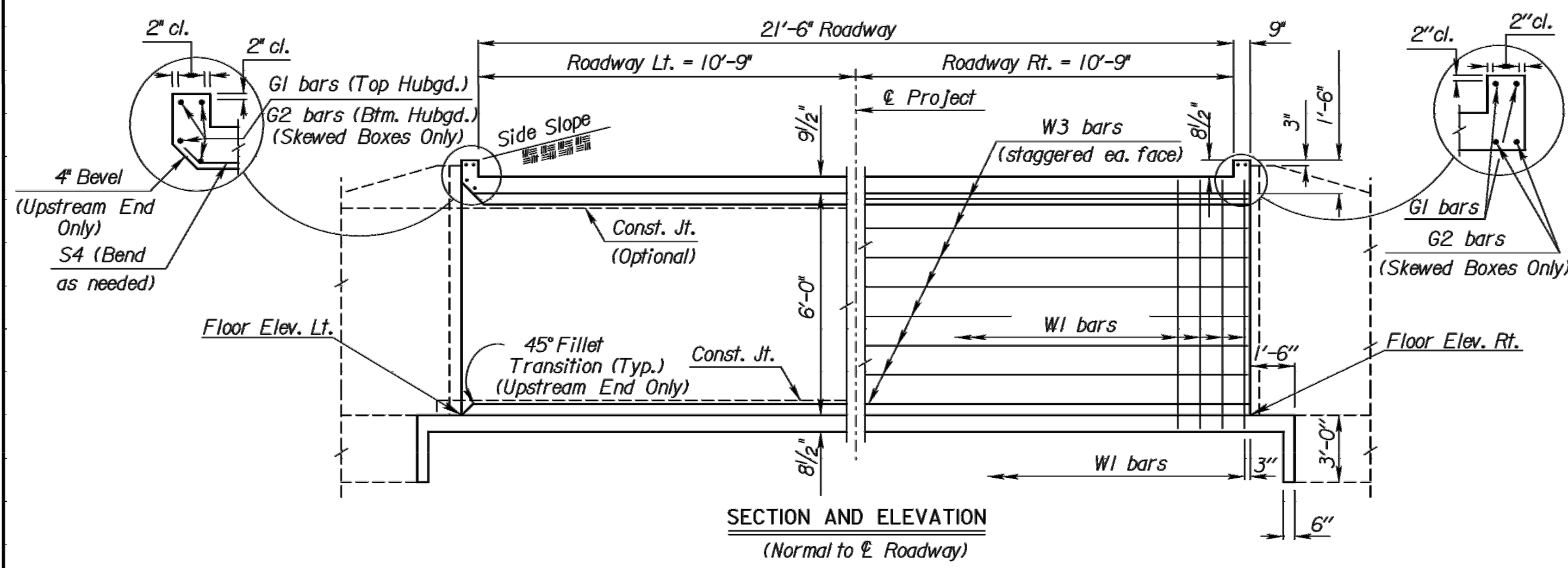


| | | | | |
|--------|---------------|------|-----------|--------------|
| STATE | PROJECT NO. | YEAR | SHEET NO. | TOTAL SHEETS |
| KANSAS | 87 TE-0451-01 | 2018 | 55 | 222 |

| | |
|------------|---------------|
| VERSION/ID | SYSTEM PART |
| 12/15/2010 | CADD VBA |
| 1/20/2008 | DATABASE |
| 1/21 | RCB PROGRAM |
| 1/15 | KBOX MODEL ID |
| 10/16/2013 | CELL LIBRARY |

06

Plotted By: Judith
 File: 2018-9-6-472-85360_1-10x6.dgn
 Plot Date: 07-SEP-2018 13:21



- See RCB Auxiliary Details for Optional Splice.
- † Omit when S3 bar is omitted
- †† Omit when F3 bars are omitted.

GENERAL NOTES

DESIGN SPECIFICATION: AASHTO LRFD Spec., 2007 Ed., 2009 Int.

DESIGN LOADING: HL93

UNIT STRESSES: Grade 4.0 Concrete; $f'c = 4,000$ p.s.i.
Reinforcing Steel; $f_y = 60,000$ p.s.i.

FILL HEIGHT: Unless otherwise noted, the Design Fill Height is measured from the riding surface at the culvert and shall include the surfacing.

CONCRETE: Grade 4.0 Concrete shall be used throughout. Bevel all exposed edges with a 3/4 inch triangular mounding. Where Grade 4.0 Concrete (AE) is specified, it shall be placed in the top slab above the Construction Joint.

REINFORCING: All reinforcing shall conform to ASTM A615, Grade 60. All dimensions relative to reinforcing steel shall be to centerline of bar unless otherwise noted.

EXCAVATION: Excavation for culverts less than bridge length shall not be paid for directly but shall be subsidiary to Grade 4.0 Concrete. Excavation for RCB Bridges shall be paid for as Class III Excavation.

SEAL COURSE: A Seal Course may be required by the Engineer. The Seal Course shall be unreinforced Concrete (Commercial Grade) to a minimum depth of 3 inches or as determined by the Engineer. Concrete for the seal course shall be paid for at the unit price set for Concrete for Seal Course.

FOUNDATION STABILIZATION: The Foundation Stabilization quantity has been calculated to the limits shown on the "RCB Auxiliary Details" sheet. The depth may be increased by the Engineer. The Contractor may under-run Foundation Stabilization under the barrel if founded on firm material and with the Engineer's approval. Use Foundation Stabilization on all wingwalls unless founded on rock or granular material.

QUANTITIES: The quantities shown in the Culvert Summary include apron and/or soil saver quantities when their construction is required by the plans. Payment for additional quantities that result from including seal course and/or floating apron, as a change in original plans, shall be made at the Unit Price bid for the various items involved.

GRANULAR BACKFILL (WINGWALLS): See the "Auxiliary Details" sheet.

STRIKE LINE: Wingwalls and that portion of the RCB outside the Strike Line shall be constructed level. Footing for wingwalls shall be constructed with the culvert floor. See wingwall detail sheet.

BRIDGE BACKWALL PROTECTION SYSTEM: For structures with this bid item in the Summary of Quantities. See the "Auxiliary Details" sheet.

| CULVERT SUMMARY | | | | | | | | | | | | LRFR RATING FACTORS | | | | |
|---|-----------------|-----------------|-----------------|------|------------|-------------|-------------|------------|------------------|-----------------|-----------------|---------------------------------|--------------|--------------|---------------|-----------|
| ⚠ For design purposes ONLY. Do NOT use for Construction | | | | | | | | | | | | includes any welded wire fabric | | | | |
| Floor Elev. Lt. | Floor Elev. Rt. | Crown Gr. Elev. | Design Fill Ht. | Skew | Left Wings | Right Wings | Scour Apron | Soil Saver | Concrete | | | Reinf. Steel (Gr. 60) | | | HL-93 Loading | |
| | | | | | | | | | Barrel (Cu.Yds.) | Wings (Cu.Yds.) | Total (Cu.Yds.) | Barrel (Lbs.) | Wings (Lbs.) | Total (Lbs.) | Inventory | Operating |
| 1348.80 | 1348.80 | 1356.64 | 0 | 0 | Flared | Flared | No | No | 22.14 | 18.04 | 40.18 | 5172 | 2070 | 7242 | 2.48 | 3.23 |

| BAR SCHEDULE | | | | | | | | | | | | | | | | | | | | | | | | | | | | | | | | | | | | | | | | | | | | | | | | |
|--------------|--------|-----|--------|--------|------|-----|--------|------|-------|-----|--------|------|------|--------|--------|--------|------|--------|--------|--------|------|-------|--------|-------|--------|--------|--------|------|--------|-----|--------|--------|------|-----|--------|------|------|-----|--------|------|------|-----|--------|--|--|--|--|--|
| Δ F1 | | | | Δ F2 * | | | | Δ F3 | | | | Δ F4 | | | | Δ S1 | | | | Δ S2 * | | | | Δ S3 | | | | Δ S4 | | | | Δ S5 | | | | | | | | | | | | | | | | |
| Size | Spa. | No. | Length | Size | Spa. | No. | Length | Size | Spa. | No. | Length | Size | Spa. | No. | Length | Size | Spa. | No. | Length | Size | Spa. | No. | Length | Size | Spa. | No. | Length | Size | Spa. | No. | Length | Size | Spa. | No. | Length | Size | Spa. | No. | Length | Size | Spa. | No. | Length | | | | | |
| 7 | 6 1/2" | 43 | 11'-0" | 6 | 8" | 70 | 9'-8" | N/A | N/A | N/A | N/A | 4 | 12 | 22'-8" | 8 | 6 1/2" | 43 | 11'-0" | 5 | 8" | 70 | 7'-5" | 4 | 1'-5" | 17 | 11'-0" | 5 | 15 | 22'-8" | 4 | 7 | 22'-8" | | | | | | | | | | | | | | | | |
| Δ K1 | | | | Δ K2 | | | | Δ W1 | | | | Δ W2 | | | | Δ W3 | | | | Δ W4 | | | | Δ G1 | | | | Δ G2 | | | | | | | | | | | | | | | | | | | | |
| N/A | N/A | N/A | | N/A | N/A | N/A | | 5 | 1'-1" | 44 | 7'-2" | N/A | N/A | N/A | N/A | 4 | 16 | 22'-8" | N/A | N/A | N/A | N/A | 5 | 4 | 11'-0" | N/A | N/A | N/A | N/A | | | | | | | | | | | | | | | | | | | |

| Minimum Splice Lengths | |
|------------------------|-------|
| #4 | 1'-5" |
| #5 | 1'-9" |

| SUMMARY OF QUANTITIES | |
|--|-----------|
| Concrete (Grade 4.0) | 31.1 C.Y. |
| Concrete (Grade 4.0(AE)) | 9.0 C.Y. |
| Bridge Backwall Protection System | 32 S.Y. |
| Reinforcing Steel (Gr. 60) | 2070 Lbs. |
| Reinforcing Steel (Gr. 60)(Epoxy Coated) | 5170 Lbs. |
| Class III Excavation | C.Y. |
| Foundation Stabilization | 13 C.Y. |
| Concrete for Seal Course (Set) | 2.6 C.Y. |
| Granular Backfill (Wingwalls) | 54 C.Y. |

| NO. | DATE | REVISIONS | BY | APP'D |
|-------------------------------------|------------|-----------|----------|--------------|
| KANSAS DEPARTMENT OF TRANSPORTATION | | | | |
| Serial No.(000) Sta. I94+98.78 | | | | |
| SINGLE 10 ft x 6 ft RFB | | | | |
| BR I.10.6 F | | | | Sedgwick Co. |
| DESIGNED | QUANTITIES | BY | DATE | APP'D |
| DETAIL CK. | DETAIL CK. | QUAN. CK. | CADD CK. | CADD CK. |