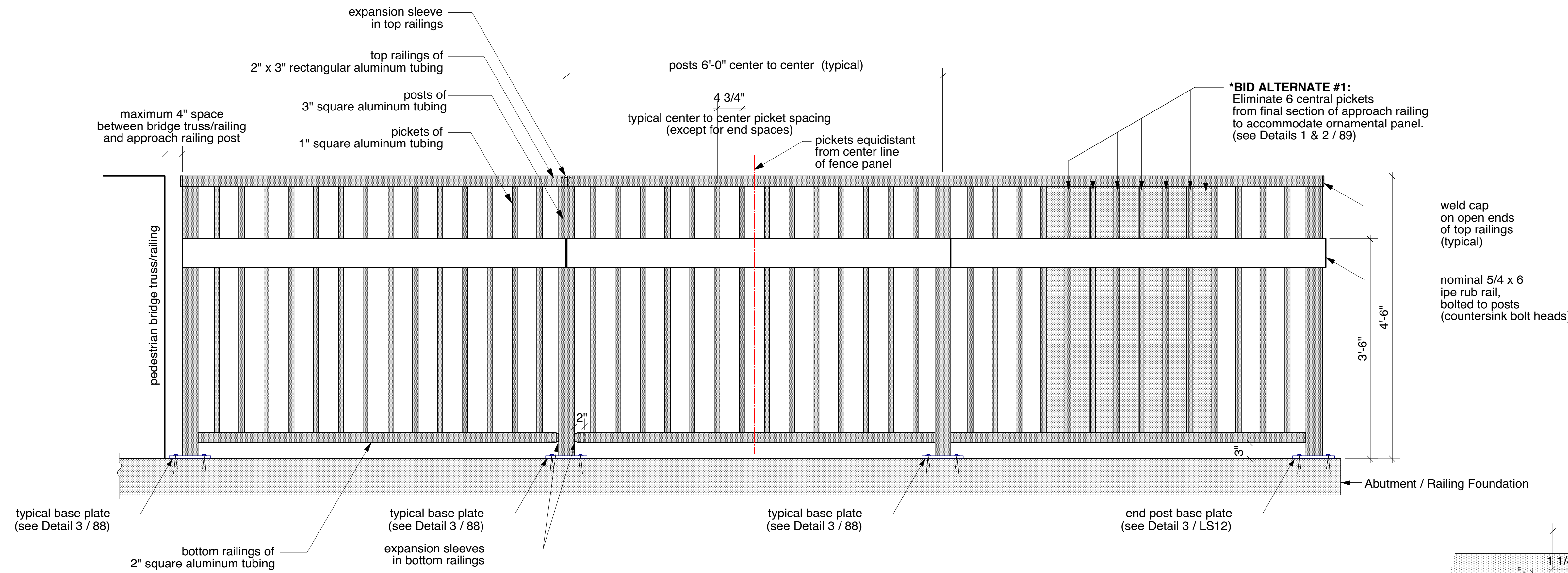


C.O.W. Project Number	O.C.A. Number	Sheet Number	Total Sheets
472-85360	707125	88	222

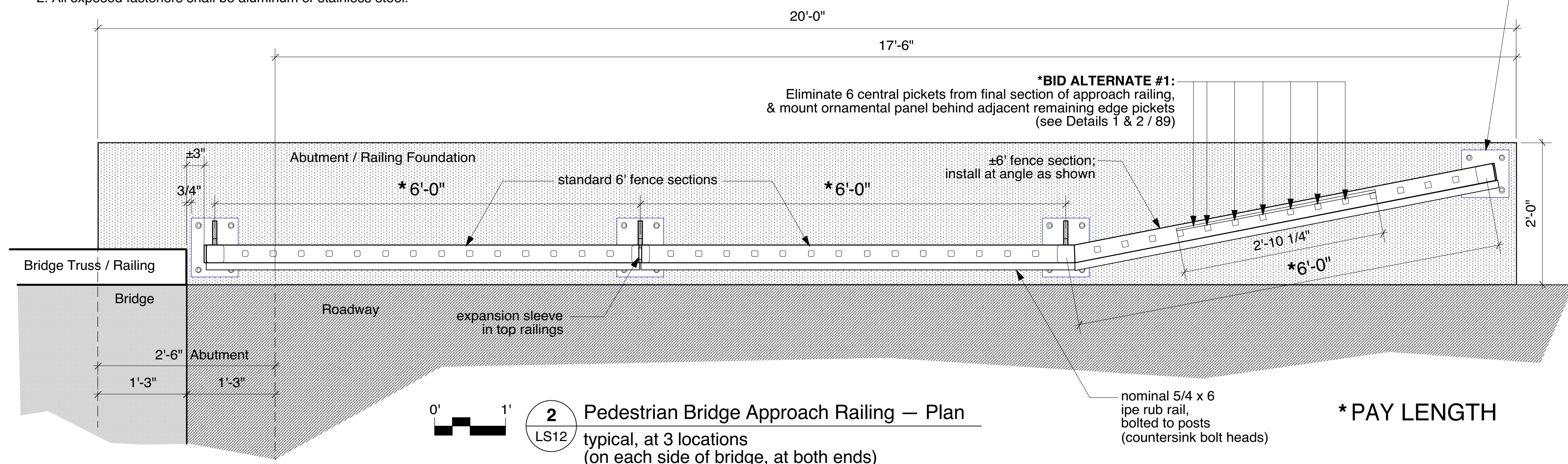


**\*NOTE:**  
Bid Alternate #1 to include ornamental panel (see Sheet 89).

**NOTES — Approach Railings**

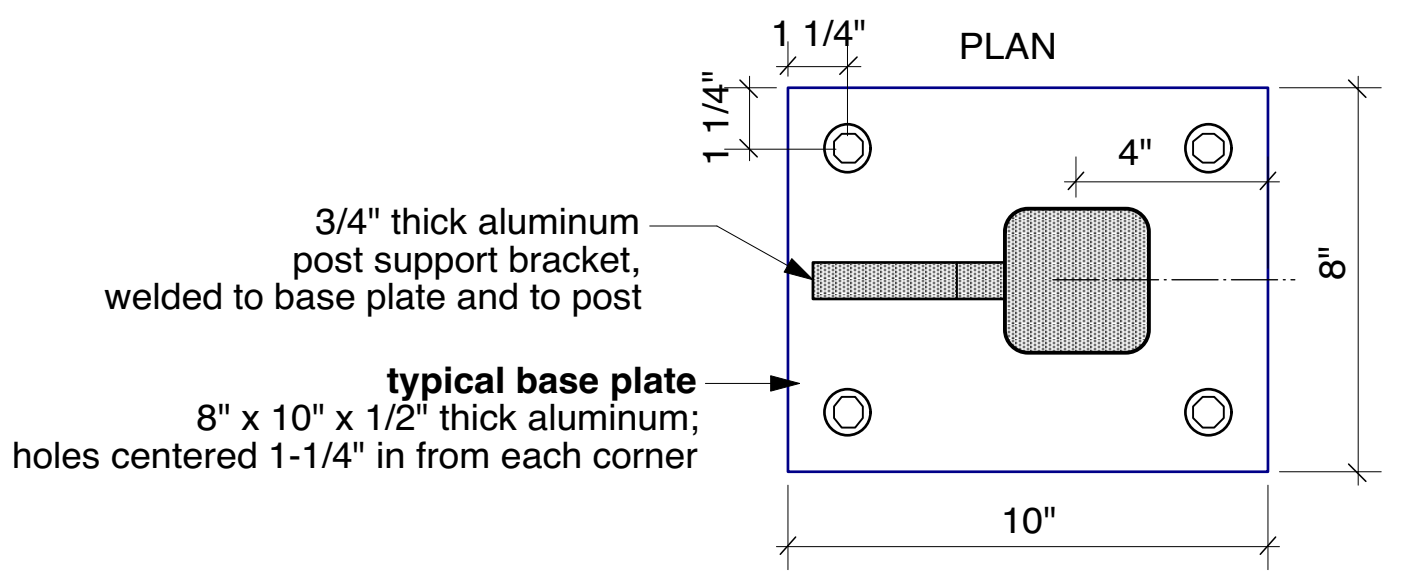
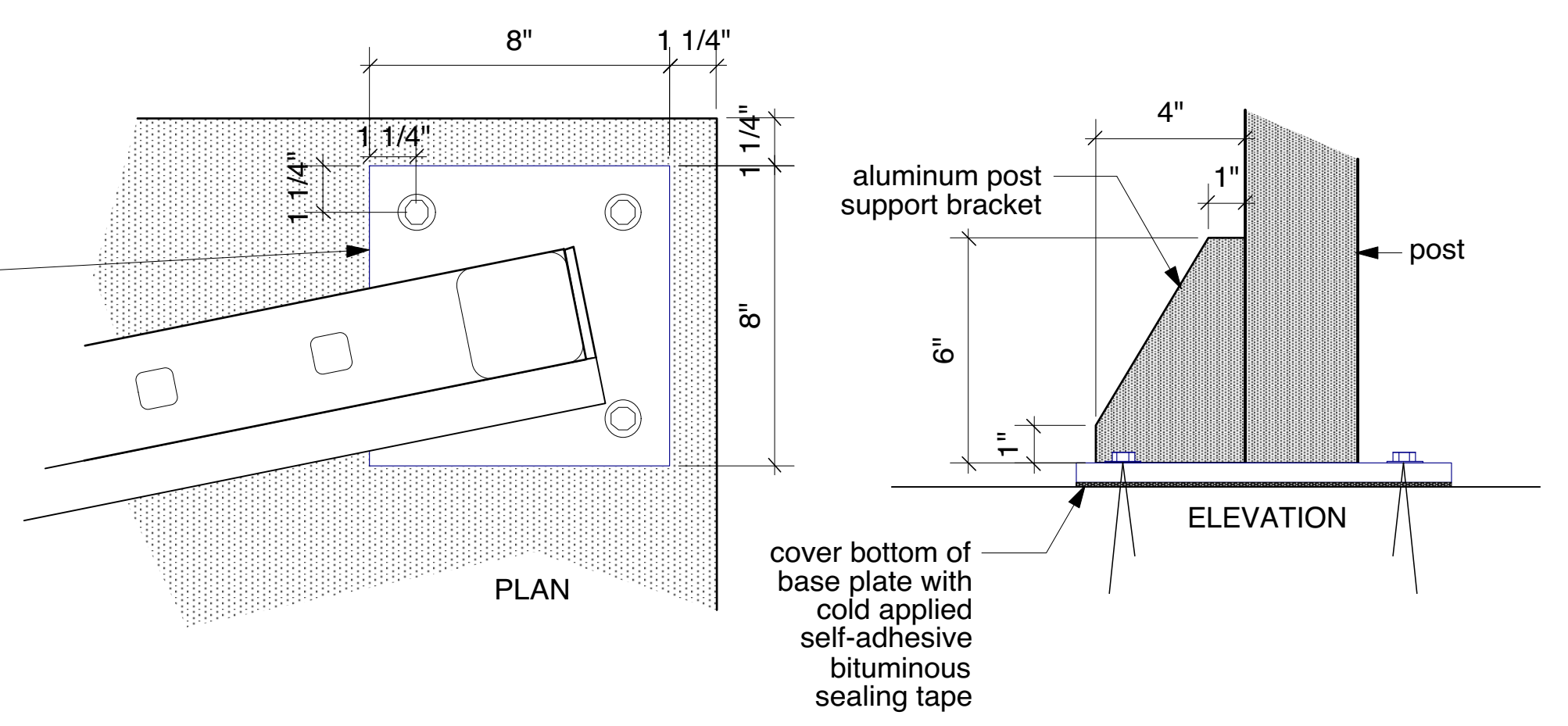
- Railing system components to be anodized aluminum in a bronze finish. Engineer to approve color and finish.
- All exposed fasteners shall be aluminum or stainless steel.

1 Pedestrian Bridge Approach Railing — Elevation



**\* PAY LENGTH**

2 Pedestrian Bridge Approach Railing — Plan



3 Base Plates & Support Brackets



landscape architecture & planning

1415 E. 2nd Street N. Wichita, KS — 316-262-4525 — www.fosterdesignassociates.com

**FINAL**  
**Pedestrian Bridge Railing**  
Redbud Bike Path — K-96 to 159th Street East, Wichita, KS

date printed: Feb. 11, 2019 project: 17008