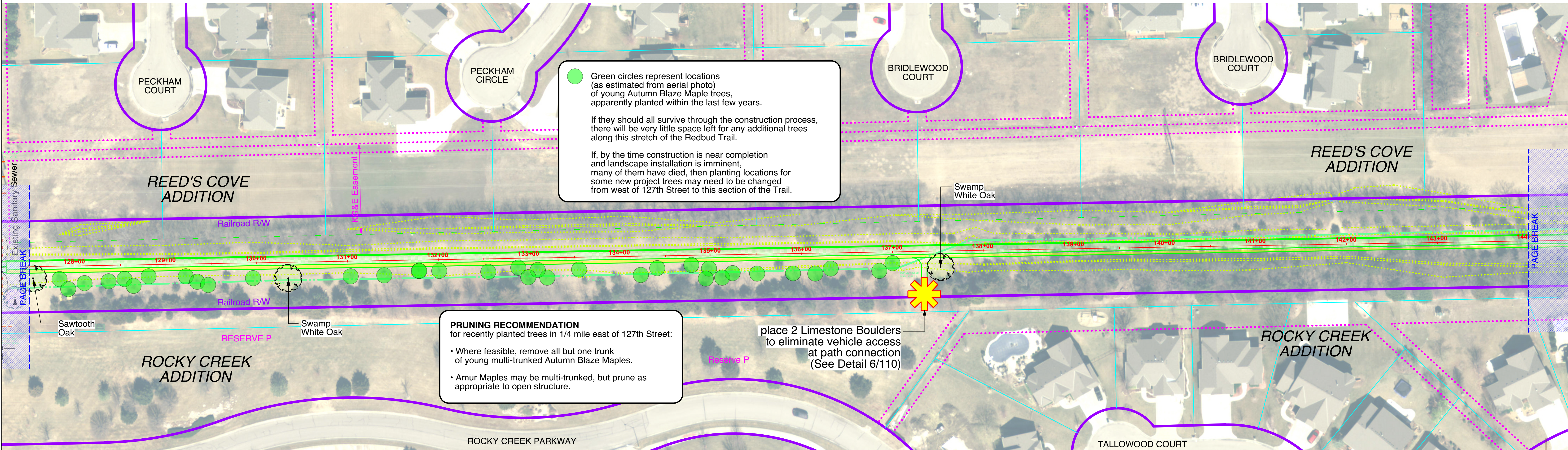


C.O.W. Project Number	O.C.A. Number	Sheet Number	Total Sheets
472-85360	707125	102	222

**KEY**

- 1-foot gravel shoulder
- 9-foot concrete path
- 4-foot gravel shoulder
- 2-foot clear zone from shoulder / no vertical obstructions
- Restore disturbed area with Native Grasses & Wildflowers
- Ornamental Tree
- Shade Tree
- Limestone Boulders for Vehicle Control
- Path Connection with Limestone Boulder Vehicle Control
- Pause Point



Green circles represent locations (as estimated from aerial photo) of young Autumn Blaze Maple trees, apparently planted within the last few years.

If they should all survive through the construction process, there will be very little space left for any additional trees along this stretch of the Redbud Trail.

If, by the time construction is near completion and landscape installation is imminent, many of them have died, then planting locations for some new project trees may need to be changed from west of 127th Street to this section of the Trail.

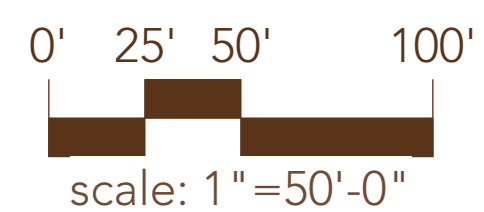
**PRUNING RECOMMENDATION**  
for recently planted trees in 1/4 mile east of 127th Street:

- Where feasible, remove all but one trunk of young multi-trunked Autumn Blaze Maples.
- Amur Maples may be multi-trunked, but prune as appropriate to open structure.

place 2 Limestone Boulders to eliminate vehicle access at path connection (See Detail 6/110)



landscape architecture & planning



1415 E. 2nd Street N. Wichita, KS — 316-262-4525 — www.fosterdesignassociates.com

**FINAL**  
**Landscape Plan — 127+50 to 144+00**  
Redbud Bike Path — K-96 to 159th Street East, Wichita, KS

date printed: Feb. 11, 2019 project: 17008