

TRINITY ACADEMY 2ND ADDITION

Wichita, Sedgwick County, Kansas

State of Kansas) SS
Sedgwick County)

Mc Ruggles & Bohm, P.A., Land Surveyors in aforesaid county and state, do hereby certify that, under the supervision of the undersigned, we have surveyed and plotted "TRINITY ACADEMY 2ND ADDITION", Wichita, Sedgwick County, Kansas, and that the accompanying plot is a true and correct exhibit of the property surveyed, described as follows:

Parcel 1:
Commencing at the northwest corner of the Northeast Quarter of Section 10, Township 22 South, Range 2 East of the 10th P.M., Sedgwick County, Kansas; thence East 855.10 feet on an assumed bearing of N89°59'50" E along the north line of said Northeast Quarter; thence South 1272.00 feet on a bearing of S89°59'46" E to the point of beginning; thence East 450.00 feet on a bearing of N89°59'47" E; thence South 572.00 feet on a bearing of S89°59'46" E; thence West 350.00 feet on a bearing of S89°59'47" E; thence North 307.00 feet on a bearing of N89°59'46" E; thence Northwest 70.71 feet on a bearing of N45°09'46" W; thence West 50.00 feet on a bearing of S89°59'47" E; thence North 215.00 feet on a bearing of N89°59'46" W to the point of beginning.

Parcel 2:
Commencing at the northwest corner of the Northeast Quarter of Section 10, Township 22 South, Range 2 East of the 10th Principal Meridian, Sedgwick County, Kansas; thence N89°59'50" E along the north line of said Northeast Quarter, 854.10 feet; thence S89°59'46" E, 1272.00 feet; thence N89°59'47" E, 450.00 feet; thence S89°59'46" E, 572.00 feet to a point of beginning; thence S89°59'47" E, 350.00 feet; thence S89°59'47" E, 186.14 feet; thence N89°59'46" W, 378.87 feet; thence N89°59'47" E, 198.57 feet to the point of beginning.

All public easements and dedications are hereby vacated by virtue of K.S.A. 12-512b, as amended.
Ruggles & Bohm, P.A.
Land Surveyors
Peter L. Oats, Chairman
Trinity Academy, Incorporated

Know all men by these presents that we, the undersigned, have caused the land described in the surveyor's certificate to be plotted into a lot and a block to be known as "TRINITY ACADEMY 2ND ADDITION", Wichita, Sedgwick County, Kansas. Access easements as indicated are hereby dedicated to the appropriate governing body. The utility easements are hereby granted for the construction and maintenance of all public utilities. No signs, light poles, private drainage systems, masonry trash enclosures or other structures shall be located within public utility easements. The Floodway Reserve Easement is hereby granted to the public for the purpose of providing flood protection and preserving the natural drainage, and of preserving and protecting the safety and welfare of the public. FEMA floodplain and regulatory floodway boundaries are subject to periodic change and such change may affect the intended land use within the subdivision. A Minimum Pool Elevation for street openings on Lot 1 = 1259.0 (NAVD83). A drainage plan has been developed for this plot and all drainage easements, rights-of-way, or reserves shall remain established grades, or as modified with the approval of the City Engineer, and unobstructed to allow for the conveyance of stormwater.

Trinity Academy, Incorporated
a Kansas not-for-profit corporation
Peter L. Oats, Chairman

State of Kansas) SS
Sedgwick County)

The foregoing instrument acknowledged before me, this 16th day of December, 2015, by Peter L. Oats, Chairman, on behalf of Trinity Academy, Incorporated, a Kansas not-for-profit corporation.

My appointment expires 10-30-2019
Notary Public

This plot of "TRINITY ACADEMY 2ND ADDITION", Wichita, Sedgwick County, Kansas, has been submitted to and approved by the Wichita-Sedgwick County Metropolitan Area Planning Commission, Wichita, Kansas.
Dated this 16th day of November, 2015.
Wichita-Sedgwick County Metropolitan Area Planning Commission
Carol Chapman, August Chair
Dale Miller, Secretary
Date Met

This plot approved and all dedications shown hereon accepted by the City Council of the City of Wichita, Kansas, this 23rd day of December, 2015.
By the direction of the City Council
Mayor
Karen Sublett, City Clerk

Reviewed in accordance with K.S.A. 58-2005 on this 3rd day of December, 2015.
Deputy County Surveyor
Sedgwick County Kansas
LS #246

Entered on transfer record this 13th day of April, 2016.
County Clerk
Kelly B. Arnold

State of Kansas) SS
Sedgwick County)

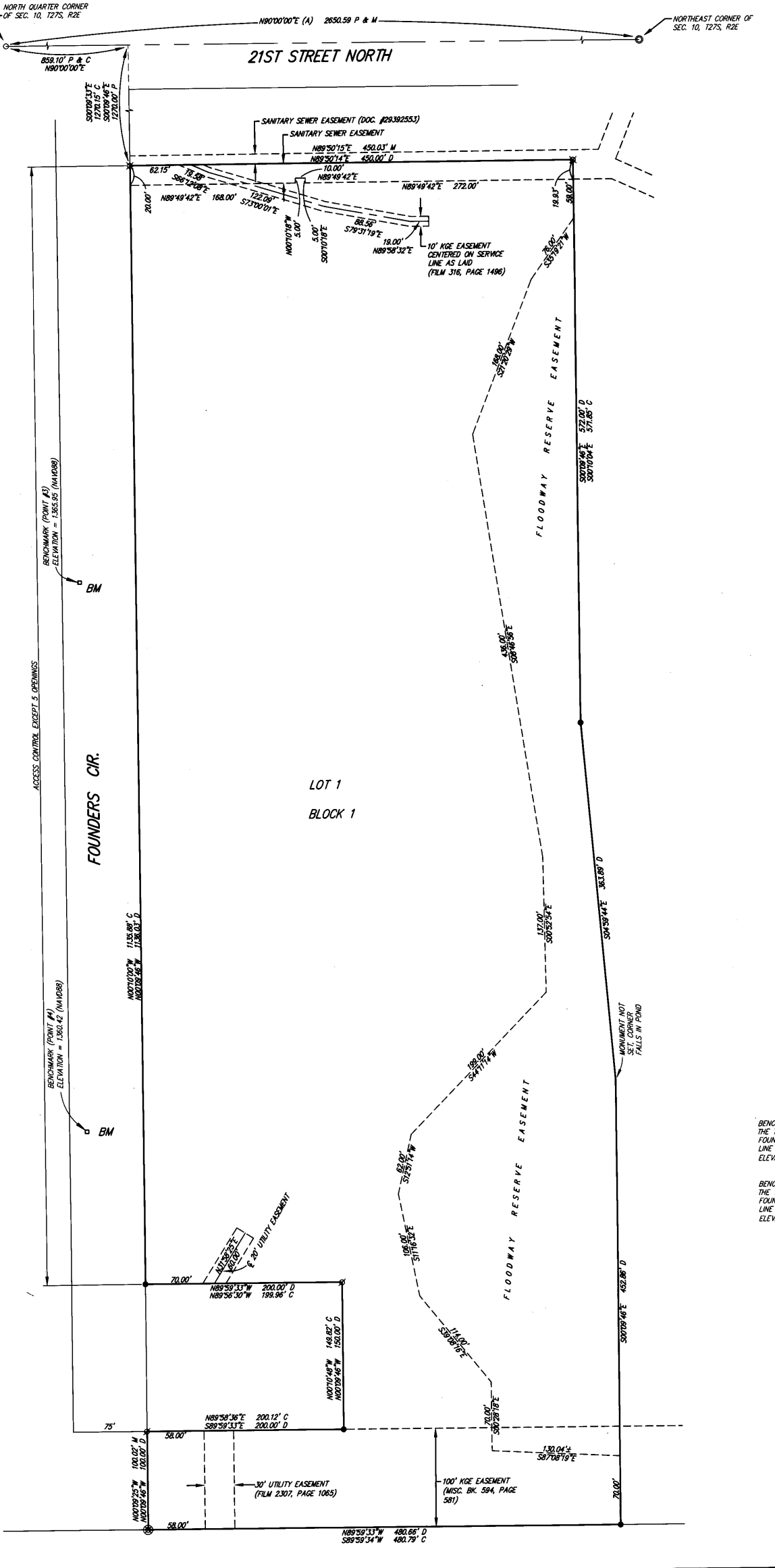
This is to certify that this plot has been filed for record in the office of the Register of Deeds, this 16th day of April, 2016, at 9:31:14 a'clock P.M. and is duly recorded.

Register of Deeds
Chief Deputy
Judy Page

Legend:
- - - - - 1/2" REAR WIRELESS CAR (ISSUED)
- - - - - 1/2" REAR WIRELESS CAR (ISSUED)
- - - - - 1/2" REAR WIRELESS CAR (ISSUED)
- - - - - 1/2" REAR WIRELESS CAR (ISSUED)
- - - - - 1/2" REAR WIRELESS CAR (ISSUED)

The pipeline located in the blanket easement and recorded in Misc. Bl. 77, Page 448, Sedgwick County Records does not cross the property described herein.

RUGGLES BOHM
INCORPORATED
1000 W. 10TH AVENUE
WICHITA, KANSAS 67203
PHONE: 316.261.1111
FAX: 316.261.1112

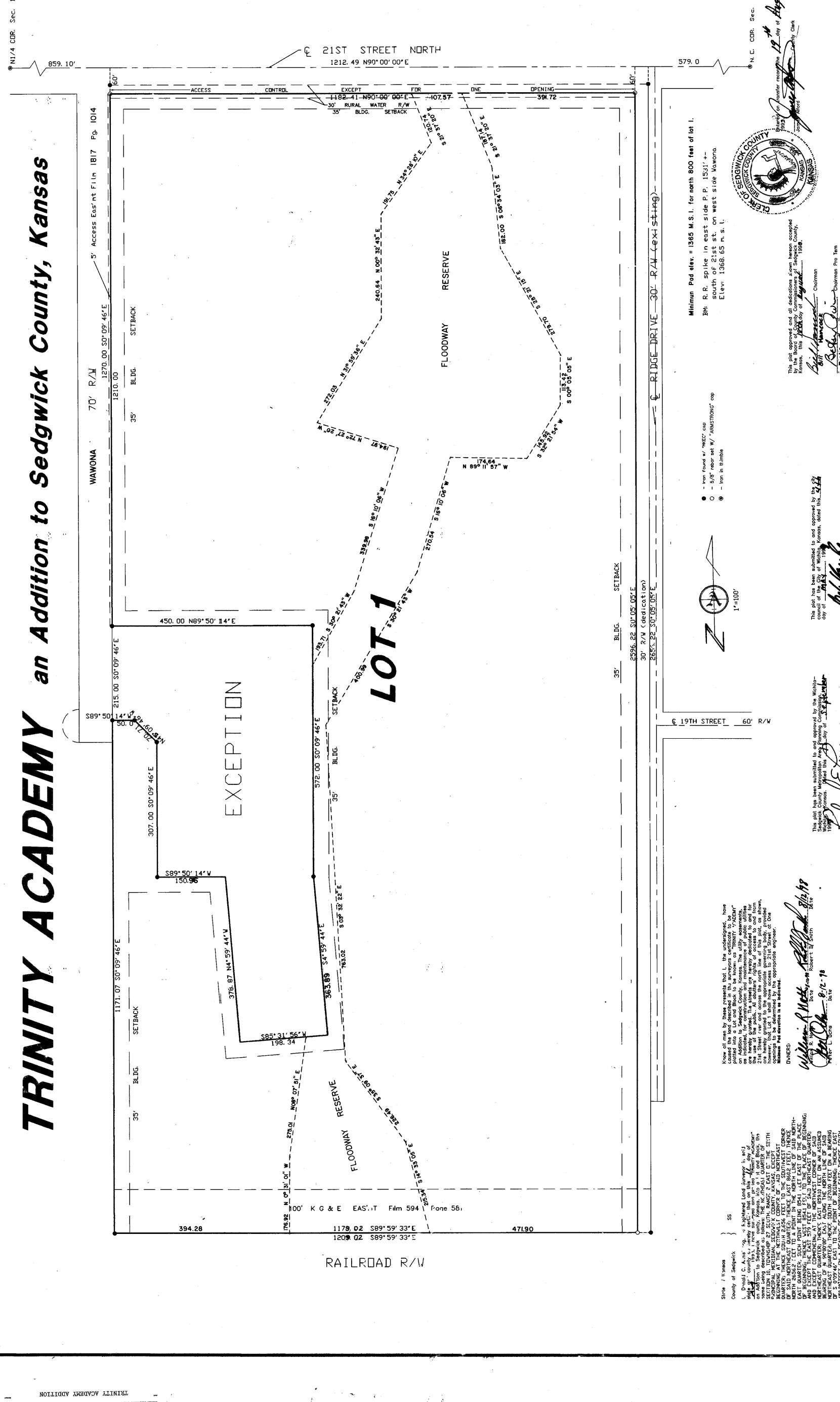


PC 256-4

PC 256-4

ARMSTRONG LAND SURVEY, P.A.

280 MATTHEWSON
WICHITA, KS 67214
PH: 316.261.0022
FAX: 316.261.0028



PC 105-2

PC 105-2

REBUD BIKE PATH PLAT	REVISION
CITY OF WICHITA, KANSAS GARY JANZEN, P.E. - CITY ENGINEER C.O.W. Project #468-85371 O.C.A. #828130	By: [Signature] Date: [Date]
POE & ASSOCIATES, INC. CONSULTING ENGINEERS 544 W. Douglas Wichita, KS 67203 Phone 316/665-4114 FAX 316/665-4444	By: [Signature] Date: [Date]
Engineer: R. GROTTE Designer: J. UNRUH Job No: 102127 Date: DECEMBER 2018	By: [Signature] Date: [Date]
Sheet 15 of 16	By: [Signature] Date: [Date]