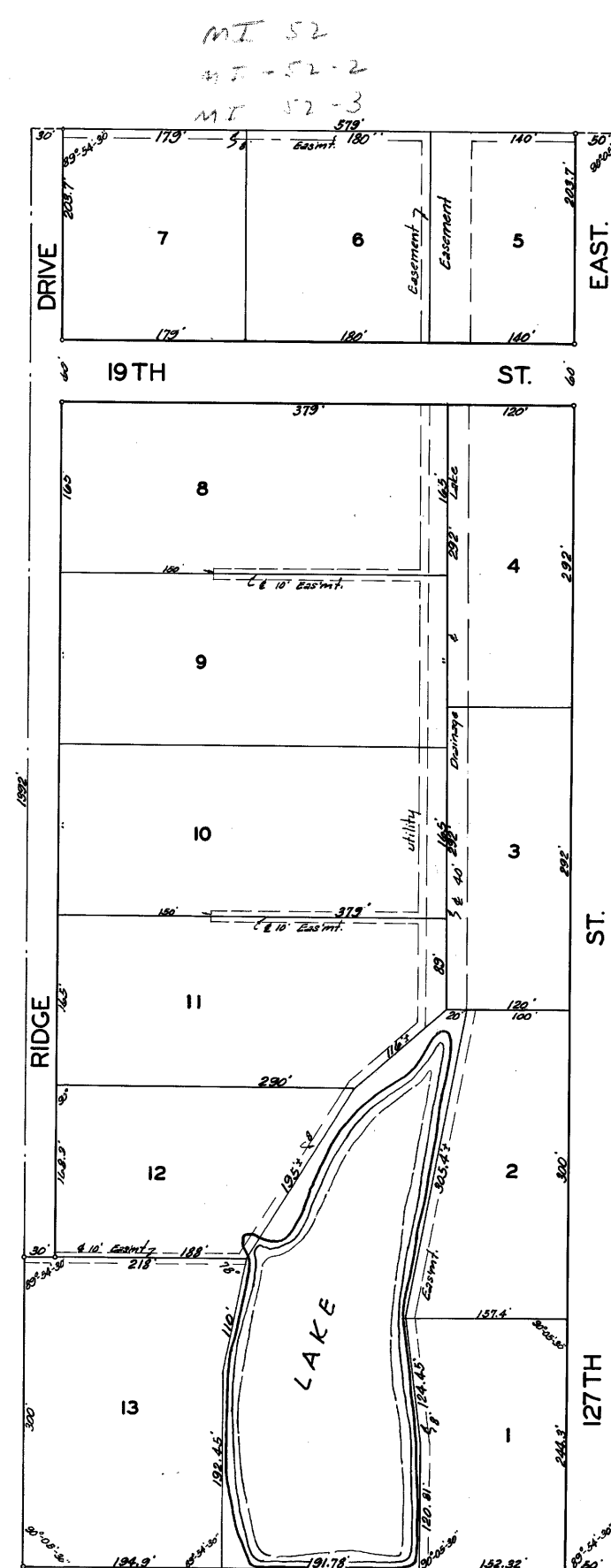


# LAKESIDE ACRES

FIRST ADDITION  
SEDGWICK COUNTY, KANSAS



State of Kansas }  
Sedgwick County } S.S. I, Clyde M. Baughman, Surveyor  
in aforesaid county and state do hereby certify that  
I have surveyed and platted "LAKESIDE ACRES" 1st Addition  
Sedgwick County, Kansas, and that the accompanying  
map plat is a true and correct exhibit of the  
property surveyed described as the south, 1322  
feet of the east 378 feet of the NE 1/4 of Sec.  
10, Twp 27-S, R-2-E, of the 6th P.M.

*Clyde M. Baughman* Surveyor

Know all men by these presents  
that we Arthur J. Stoltz and Madge N. Stoltz  
his wife, Philip M. Hickman and Mary C.  
Hickman his wife, and John J. Myers and  
Albertine G. Myers his wife, have caused the  
land described in the foregoing certificate to  
be platted into lots and streets to be known  
as "LAKESIDE ACRES" Sedgwick County, Kansas.  
Easements are hereby granted as indicated for  
the construction and maintenance of all public  
utilities. The streets are hereby dedicated to  
and for the use of the public. The lake and  
the area surrounding the lake is hereby dedicated  
to and reserved for the use of the residents of  
LAKESIDE ACRES, Sedgwick County, Kansas.

*Arthur J. Stoltz* *Madge N. Stoltz*  
*Philip M. Hickman* *Mary C. Hickman*  
*John J. Myers* *Albertine G. Myers*

State of Kansas } S.S. Be it remembered that on this  
Sedgwick County } 4th day of April, 1955, before me  
a notary public in aforesaid county and state  
came Arthur J. Stoltz and Madge N. Stoltz his  
wife, Philip M. Hickman and Mary C. Hickman  
his wife, and John J. Myers and Albertine G.  
Myers his wife, to me known to be the same  
persons who executed the foregoing instrument  
of writing and duly acknowledged the execution  
of the same. In testimony whereof I have here-  
unto set my hand and affixed my notarial  
seal the day and year above written.

*John Chapple* Notary Public  
My Commission Expires Dec 26, 1957

We, The Chapple Inv. Corporation  
holders of a mortgage on a portion of the above  
described property do hereby consent to the plat  
of "LAKESIDE ACRES" Sedgwick County, Kansas.  
The Chapple Inv. Corporation

*J. N. Chapple* President  
*J. M. Chapple* Secretary

State of Kansas } S.S. Be it remembered that on this  
Sedgwick County } 4th day of April, 1955, before me a  
notary public in aforesaid county and state came  
The Chapple Inv. Corporation by its President, J.  
N. Chapple Sr. and Secretary, J. M. Chapple Jr., to  
me known to be the same persons who executed  
the foregoing instrument of writing and duly  
acknowledged the execution of the same. In test-  
imony whereof I have hereunto set my hand and  
affixed my notarial seal the day and year above  
written.

*Mae Higgins* Notary Public  
My Commission Expires 8-1-59-36  
Res. Co. M 340 Ass 579  
Consent to Plat Ch. 12 to 423

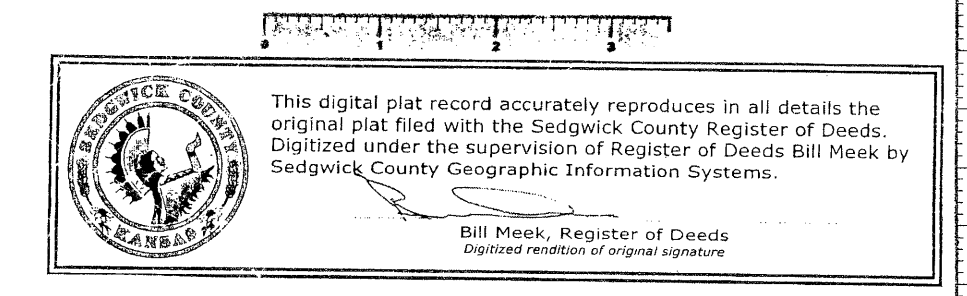
Approved by the Board of  
County Commissioners this 22th day of April  
1955.  
*Ed Schmitt* County Clerk

Entered on the transfer record  
this 6th day of April, 1955.  
*Ed Schmitt* County Clerk

State of Kansas } S.S. This is to certify that this  
Sedgwick County } plat was filed for record in the office of the  
Register of Deeds this 6th day of April, 1955,  
at 2:30 o'clock P.M. and is duly  
recorded.

*Bill Meek* Register of Deeds  
Res. Co. M 340 Ass 579  
Consent to Plat Ch. 12 to 423

L-2-8



REBUD BIKE PATH PLAT	CITY OF WICHITA, KANSAS	GARY JANZEN, P.E. - CITY ENGINEER	C.O.W. Project #468-85371 O.C.A. #828130	No. _____ Date _____ By _____ Approved _____ Revision _____
<b>POE &amp; ASSOCIATES, INC.</b> CONSULTING ENGINEERS	544 W. Douglas Wichita, KS 67203	Phone 316/685-4114 FAX 316/685-4444		Engineer: R. GROTTE Designer: J. UNRUH Job No: 102127 Date: DECEMBER 2018
16	of	16		