

BENCHMARKS:
 BM#1: RR spike in high line pole, 40' west and 30' south of Lot 60, Block D, Firefly Way Addition.
 Elev. = 1399.54 NAVD88

BM#2: V-notch in sidewalk along Eagle St., adjacent to NE corner of Lot 15, Block E, Firefly Way Addition.
 Elev. = 1401.26 NAVD88

Contractor to contact owners (both hotel and Res. "B") at least two weeks prior to construction to coordinate parking lot removal/replacement.

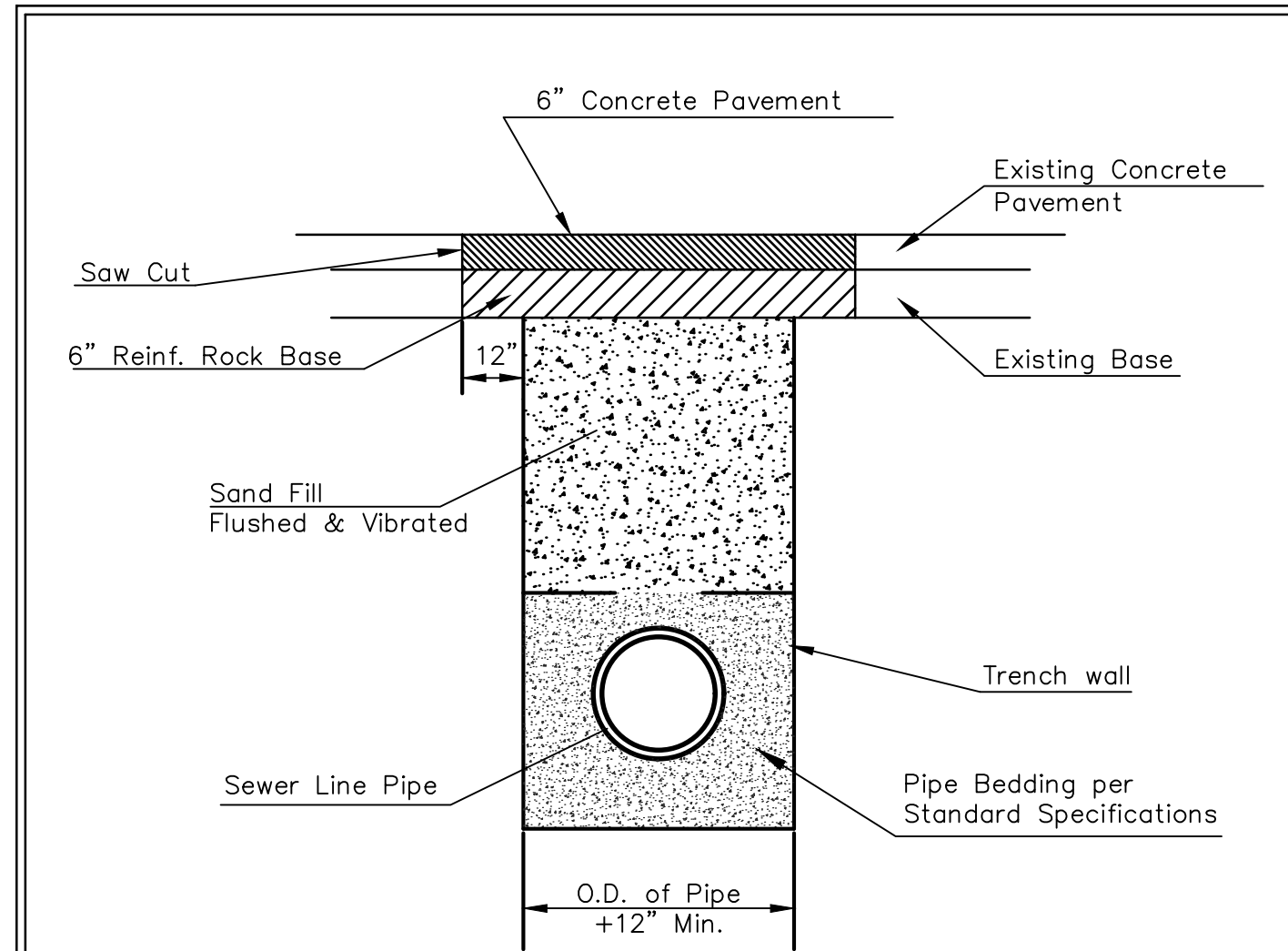
Trees in conflict with sanitary sewer construction to be removed by contractor. To be paid for as lump sum bid item "Site Clearing"

All other trees shall remain and be protected from damage during construction. Overhanging limbs shall be trimmed by the Contractor using a chain saw only as necessary for construction and with approval of the Engineer. Cost of tree trimming to be included in bid item "Site Clearing"

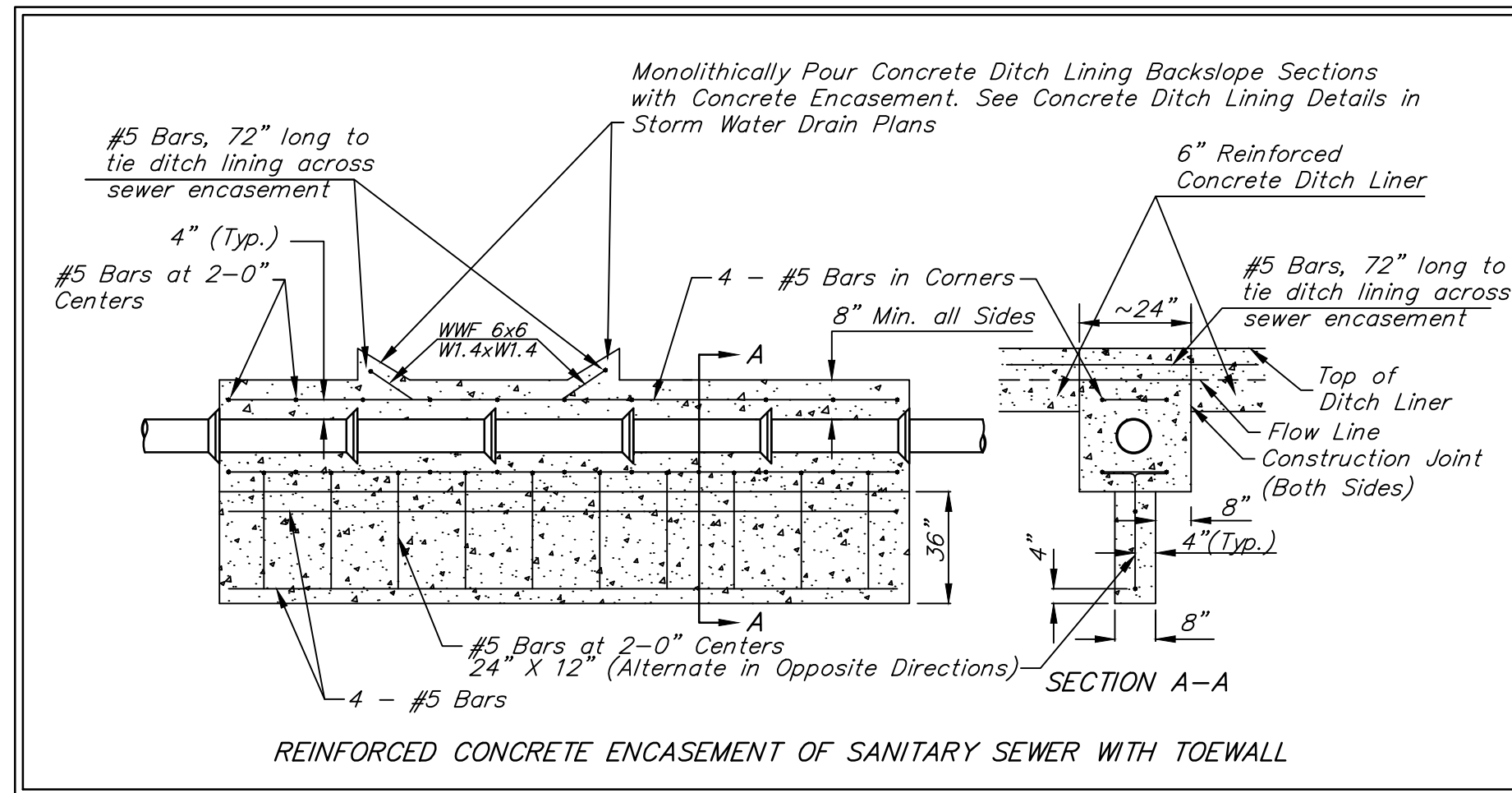
Remove and replace rock, restore berm to prior conditions. Install erosion control mat in disturbed areas on the side slopes and top of the berm.

Proposed Concrete Ditch Liner. See plans and details in Storm Water Drain project.

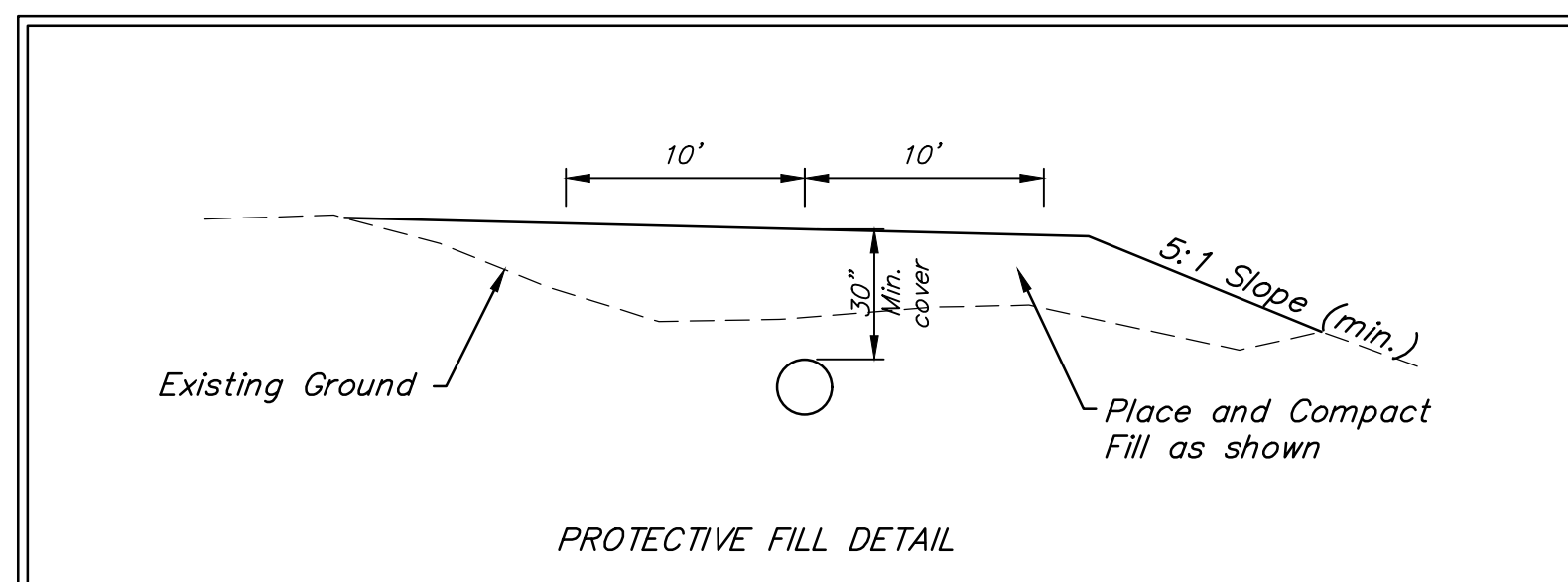
Remove, do not replace existing fence as necessary for sanitary sewer construction.



PAVEMENT REPLACEMENT & TRENCH COMPACTION UNDER EXISTING PAVEMENT



REINFORCED CONCRETE ENCASEMENT OF SANITARY SEWER WITH TOEWALL



Contractor shall verify elevation and alignment of existing 8" pipe prior to construction and notify Engineer of any discrepancy.

OWNER
 One Valley Center LLC
 125 N. Emporia St. Ste. 202
 Wichita, KS 67202

Saw cut and remove existing concrete pavement and curb & gutter to nearest joint as necessary for sanitary sewer construction. Install sand backfill flushed and vibrated as needed for excavated areas. Replace pavement with 6" Concrete Reinforced Pavement W/ Reinforced Crushed Rock Base 6". New pavement to be restriped with yellow Pavement Marking, 4" as needed. All work to be incidental to "Site Restoration".

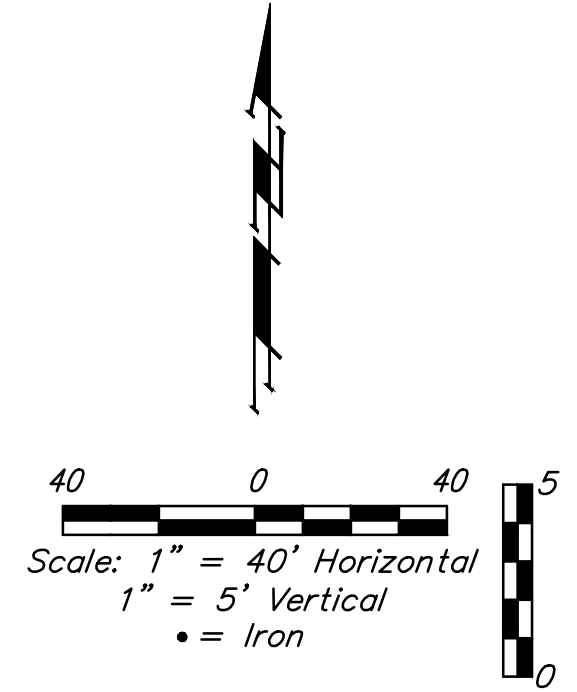
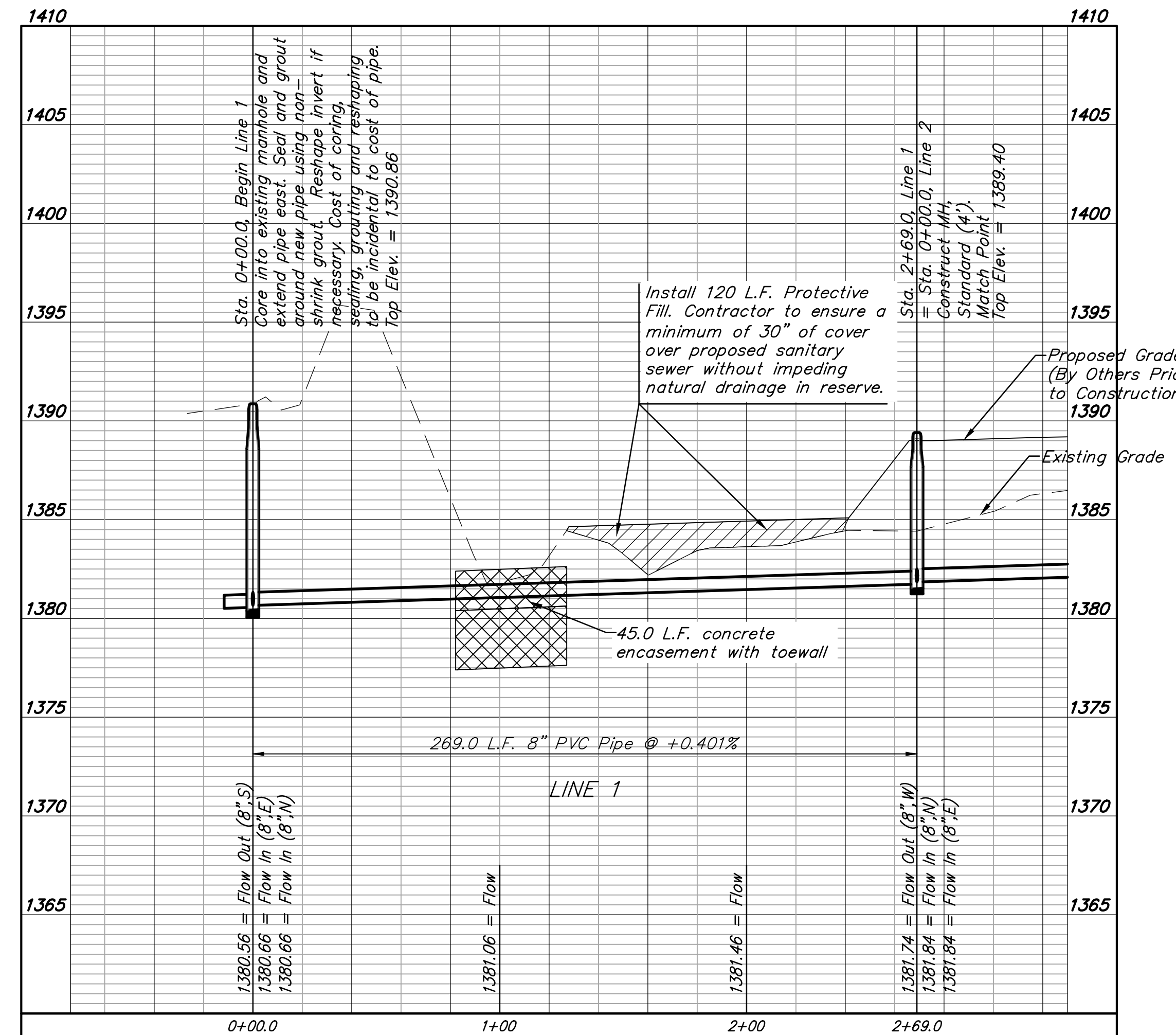
WICHITA DESTINATION DEVELOPMENT

Sta. 0+00.0, Begin Line 1 Core into existing manhole and extend pipe east. Seal and grout around new pipe using non-shrink grout. Reshape invert if necessary. Cost of coring, sealing, grouting and reshaping to be incidental to cost of pipe. Top Elev. = 1390.86 N=7,658.26 E=18,437.29

Sta. 0+82.0 to Sta. 1+27.0 Install 45.0 L.F. concrete encasement with toewall per detail, this sheet.

CAUTION! Ex. OH Elec. Crossing

Sta. 2+69.0, Line 1 = Sta. 0+00.0, Line 2 Construct MH, Standard (4). Match Point Top Elev. = 1389.40 N=7,685.16 E=18,704.96



FIREFLY WAY ADDITION

RES "J"
 Proposed Pond

Baughman Company, P.A.
 ENGINEERING ARCHITECTURE
 17919
 11/25/19
 KANSAS
 PROFESSIONAL ENGINEER

FIREFLY WAY ADDITION
LINE 1
 SANITARY SEWER IMPROVEMENTS