

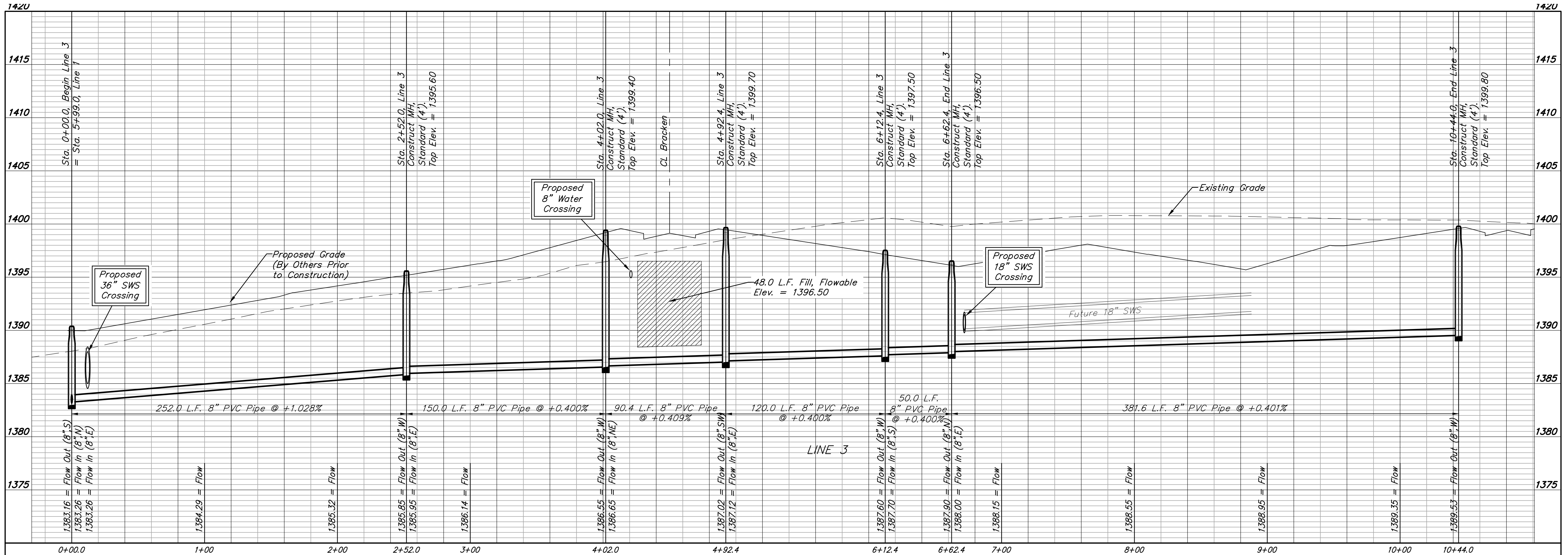
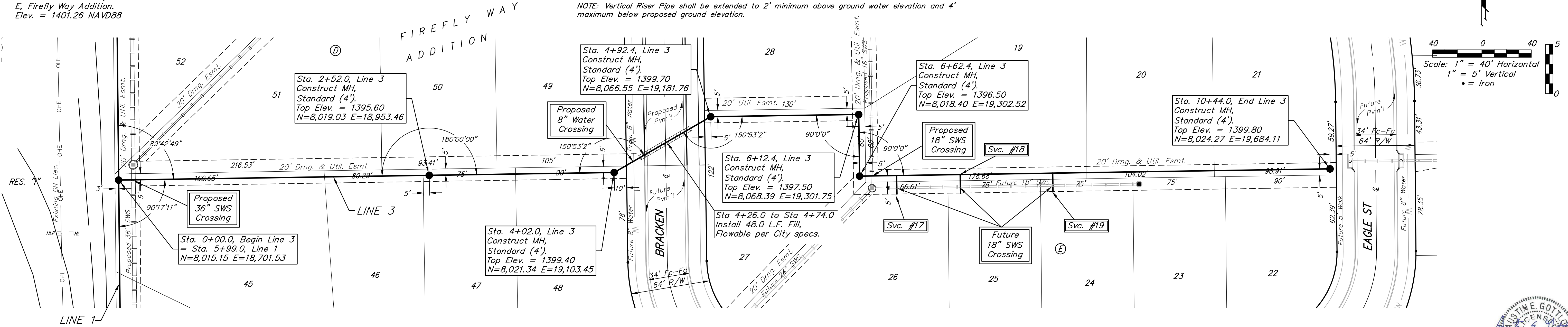
**BENCHMARKS:**  
 BM#1: RR spike in high line pole, 40' west and 30' south of Lot 60, Block D, Firefly Way Addition.  
 Elev. = 1399.54 NAVD88

BM#2: V-notch in sidewalk along Eagle St., adjacent to NE corner of Lot 15, Block E, Firefly Way Addition.  
 Elev. = 1401.26 NAVD88

**SEWER SERVICE TABLE**

NUMBER	TYPE	LOCATION				FOR INFORMATION ONLY	
		LOT NO.	BLOCK NO.	LINE NO.	STATION \ DIRECTION	APPROXIMATE LENGTH 4" PIPE	VERTICAL
17	8" X 4" Tee W/Riser	26	E	3	6+92.4/Rt.	4.5'	15.0'
18	8" X 4" Tee W/Riser	25	E	3	7+44.0/Rt.	5.5'	15.0'
19	8" X 4" Tee W/Riser	24	E	3	8+19.0/Rt.	4.5'	15.0'

NOTE: Vertical Riser Pipe shall be extended to 2' minimum above ground water elevation and 4' maximum below proposed ground elevation.



FIREFLY WAY ADDITION  
**LINE 3**  
 SANITARY SEWER IMPROVEMENTS

**Baughman Company, P.A.**  
 ENGINEERING, ARCHITECTURE, PLANNING, LANDSCAPE ARCHITECTURE  
 1125 S. W. 10th St., Suite 200, Topeka, KS 66604  
 781.345.1234  
 Justin G. Gottlieb, P.E.  
 License No. 17919  
 State of Kansas  
 11/25/19  
 PROFESSIONAL ENGINEER

SHEET  
**7**  
 OF  
**20**