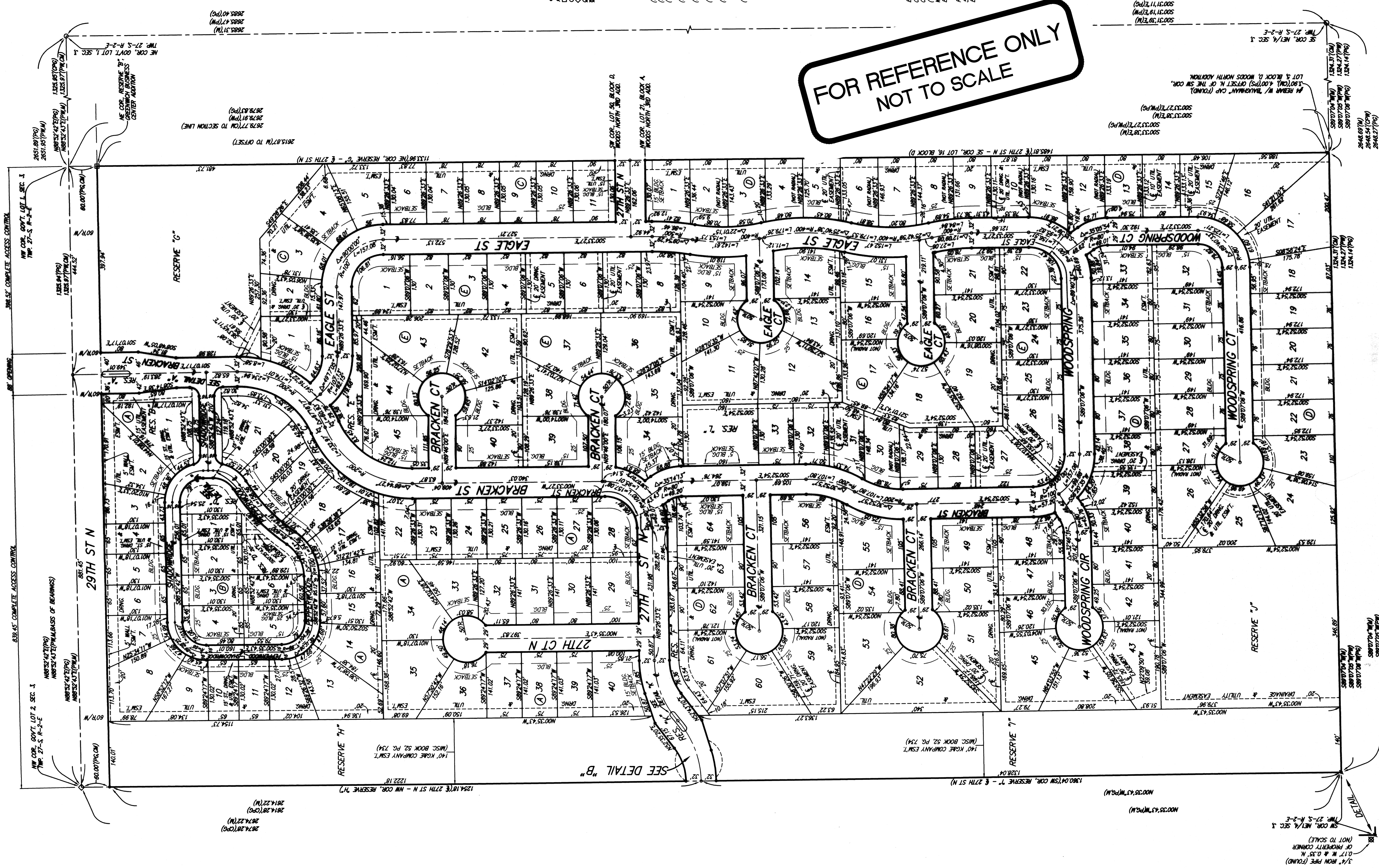


FIREFLY WAY AN ADDITION TO WICHITA, SEDGWICK COUNTY, KANSAS



- (M) = MEASURED
- (PS) = PREVIOUS SURVEY
- (CM) = CORRECTED AND RECALCULATED
- (PF) = PLATTED FROM FIELD
- (PM) = THE FURNACE PER
- (CPM) = WOODS NORTH ADDITION
- (CPW) = CALCULATED INTO PERP
- (PS) = PLATTED FROM FIELD
- (CPW) = GREENWICH BUSINESS CENTER ADDITION
- (CPW) = GREENWICH BUSINESS CENTER ADDITION

LOT	BLOCK	ELEVATION	MANHOLE
1-4	C	1305.5	
24-26	D	1307.8	
41-43	D	1307.8	

BENCHMARK:
CITY OF WICHITA BENCHMARK DISC 1307.7 E. & 146.6 N.
OF THE COR. LOT 1, BLOCK D, FIREFLY WAY, LOT 2, BLOCK A,
WOODS NORTH ADDITION, NE COR. LOT 2, BLOCK A,
ELEV. = 1307.69 W.M.H.S.
RAILROAD SPINE IN E. FACE OF E. 71' POLE 39.9' W. &
S&K S. OF NE COR. RESERVE 7', FIREFLY WAY,
ELEV. = 1309.54 W.M.H.S.

FOR REFERENCE ONLY
NOT TO SCALE

NOTE:
A drainage plan has been developed for the site and
is shown on sheet 20 of this plat. The drainage plan
is subject to the approval of the City or County Engineer and
is not to be construed as a guarantee of performance.