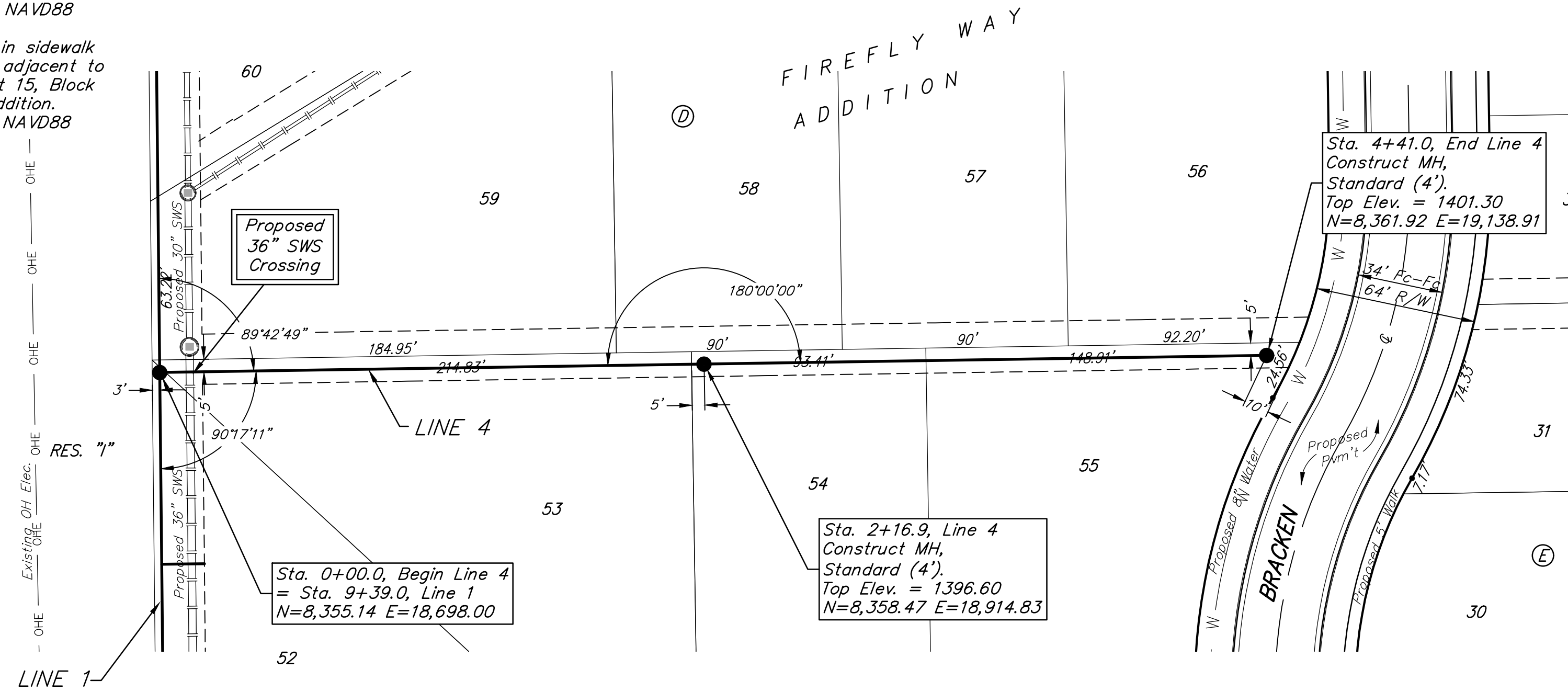


BENCHMARKS:
 BM#1: RR spike in high line pole, 40' west and 30' south of Lot 60, Block D, Firefly Way Addition.
 Elev. = 1399.54 NAVD88

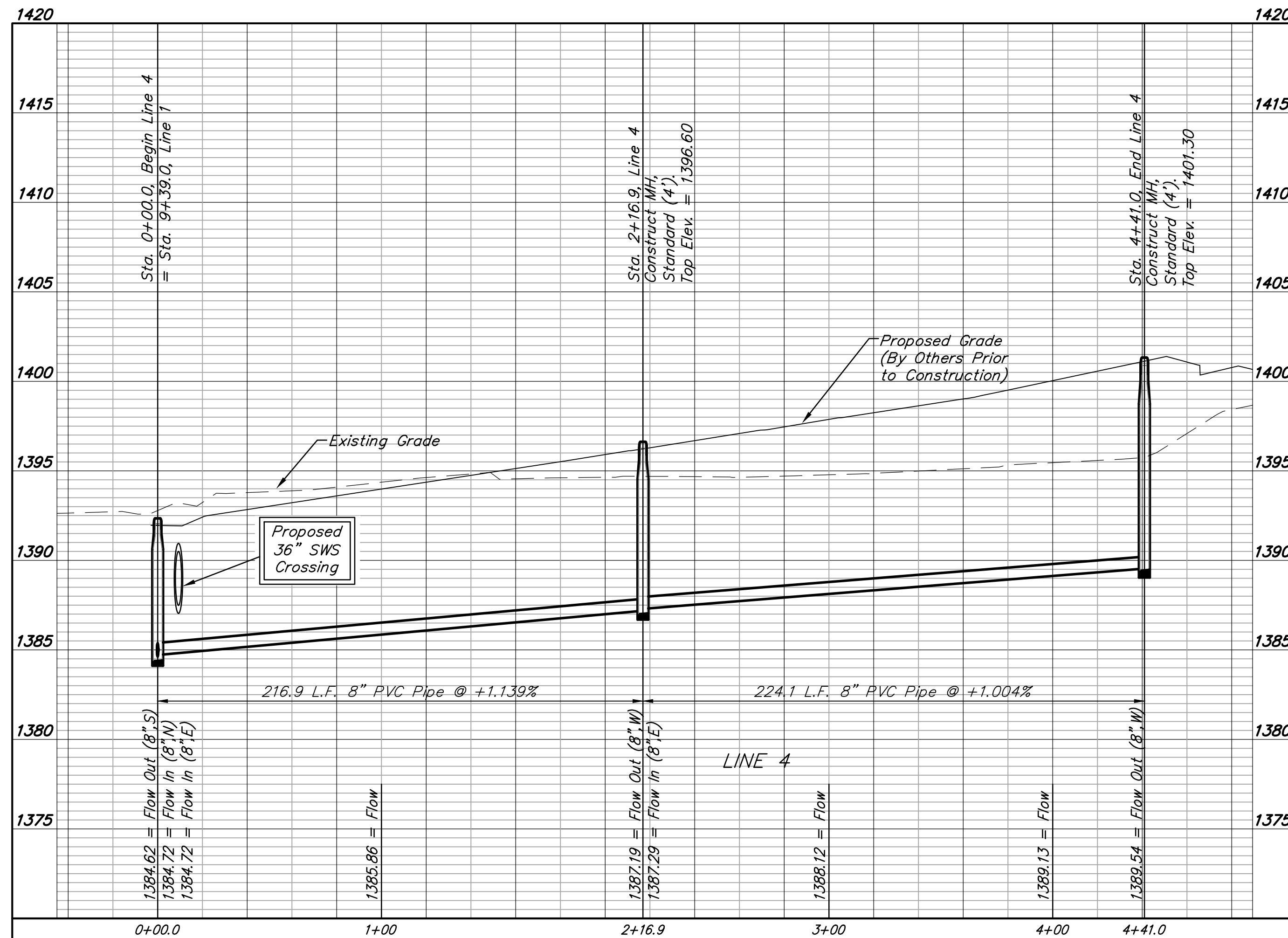
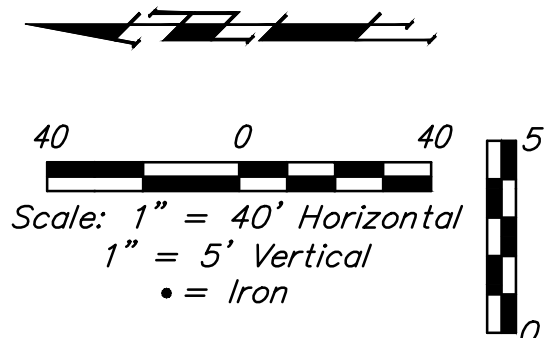
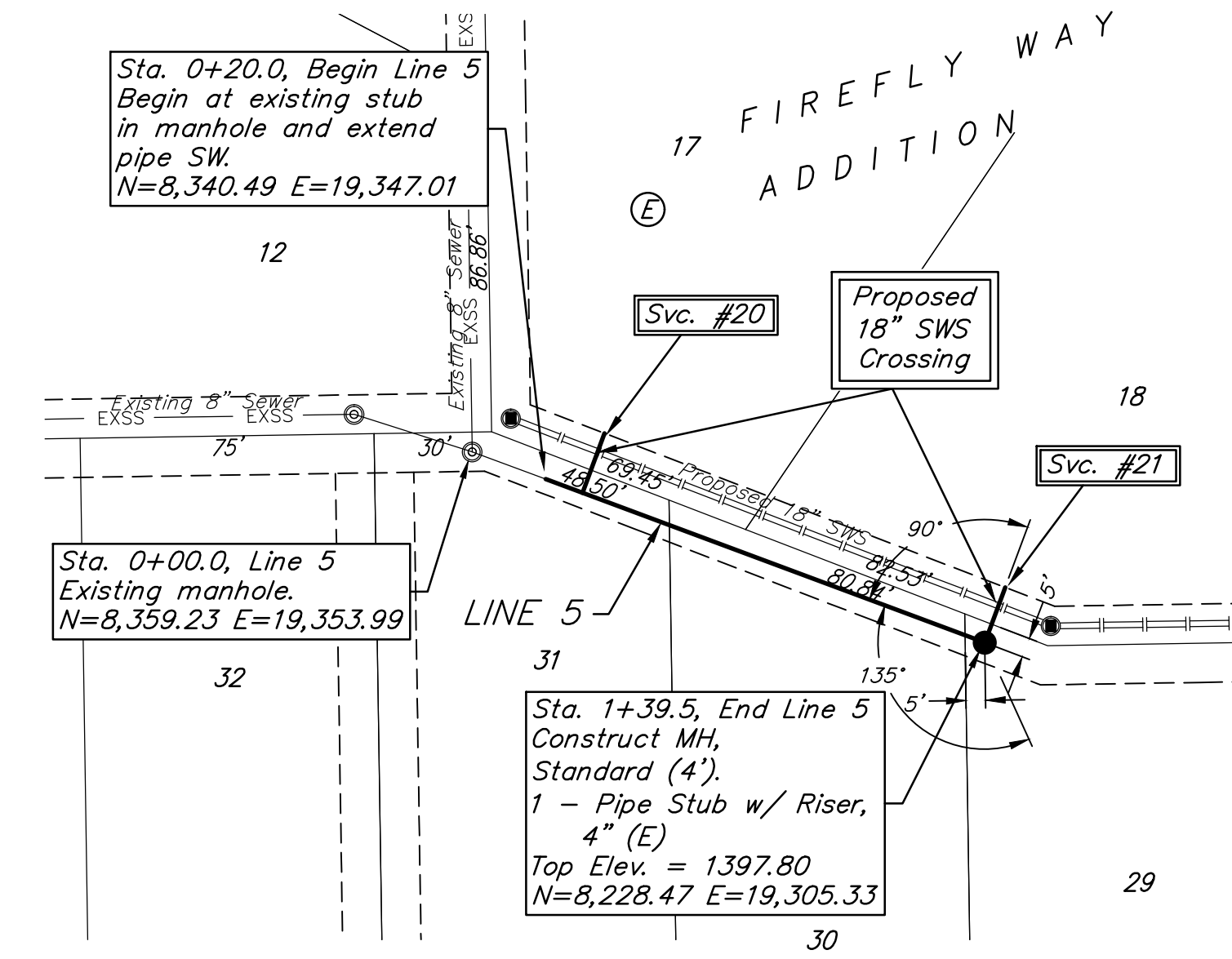
BM#2: V-notch in sidewalk along Eagle St., adjacent to NE corner of Lot 15, Block E, Firefly Way Addition.
 Elev. = 1401.26 NAVD88



SEWER SERVICE TABLE

NUMBER	TYPE	LOCATION			FOR INFORMATION ONLY		
		LOT NO.	BLOCK NO.	LINE NO.	STATION	APPROXIMATE LENGTH 4" PIPE	
					VERTICAL	HORIZONTAL	
20	8" X 4" Tee W/Riser	17	E	5	0+30.0/Lt.	3.5'	16.2'
21	4" Stub W/Riser	18	E	5	1+39.5/Lt.	4.5'	15.0'

NOTE: Vertical Riser Pipe shall be extended to 2' minimum above ground water elevation and 4' maximum below proposed ground elevation.



Contractor shall verify elevation and alignment of existing 8" pipe prior to construction and notify Engineer of any discrepancy.

