

# GENERAL NOTES:

1. Contractor will be required to provide notice to utility companies a minimum of seventy-two (72) hours prior to any excavation, as follows:

Kansas One-Call 687-2470

The Contractor must notify the following in case of an emergency:

AT&T 1-800-246-8464  
 Black Hills Energy 1-800-694-8989  
 City of Wichita Water & Sewer 1-316-219-8921  
 City of Wichita Stormwater 1-316-268-4090  
 City of Wichita Traffic 1-316-268-4034  
 Cox Communications 1-888-249-3530  
 Kansas Gas Service 1-888-482-4950  
 Westar Energy 1-800-544-4857

2. Utility service lines, poles, etc. are to be adjusted as necessary by others prior to construction unless the plans specifically call for their adjustment by the Contractor or unless the plans specifically identify a utility to be adjusted by its owner during construction. Existing utilities and their location, as shown on the plans, represent the best information obtainable for design. The Contractor will be required to work around existing utilities within the right-of-way which do not conflict with proposed construction.

3. Rubble from the removal of miscellaneous structures and excess excavation which is to be wasted shall be disposed of on sites to be provided by the Contractor. These sites shall be approved by the Engineer as to suitability, appearance and site location. Locations, in the opinion of the Engineer, that will leave an unsightly appearance will not be approved. All disposal sites must be approved by the Kansas Department of Health and Environment. Material either stockpiled or disposed of in a flood plain will require a Kansas State Board of Agriculture permit. Any material dumped in waters of the United States or wetlands is subject to U.S. Corps of Engineers permitting regulations. Any material buried or stockpiled beyond approved construction limits will require additional archaeological investigations unless buried in a previously approved borrow location.

4. Trees and shrubs in public right-of-way which are in direct conflict with proposed new construction shall be removed by the Contractor with the City Engineer's approval. Trees and shrubs which are not in direct conflict with proposed new construction shall be saved and protected from damage.

5. The Contractor shall give all property owners and/or tenants of developed property abutting the construction of this project a minimum of ten (10) days notice prior to start of construction.

6. The Contractor shall be responsible for preserving property irons. The Contractor will be required to re-establish any property irons which are damaged or destroyed by his construction operations. Such irons shall be re-established by a licensed land surveyor in accordance with state laws.

7. All elevations shown are NAVD 88.

8. Contractor shall limit the extent of trench openings overnight and weekends to less than 50 feet.

9. The Contractor shall protect from damage and support existing utilities through construction as approved by the utility owner and the Engineer at the contractor's expense.

10. All existing and proposed erosion control measures including silt fencing, erosion control mat, straw bales, inlet barriers, and const. entrance shall be maintained throughout construction by the contractor and until project is accepted by the City of Wichita. The on-site engineer shall complete weekly reports on the status of erosion control measures. The contractor shall be required to comply with maintenance and/or replacement of erosion control measures as determined by the on-site engineer until project is accepted by City of Wichita. Maintenance and/or replacement of erosion control measures to be paid by L.S. bid item "Maintain Existing BMPs".

11. All excess excavation shall remain on-site and shall be stockpiled or spread at a location determined by the engineer.

12. All of Res. "I" & "J" above the water surface shall be seeded and mulched as follows:

Seed -- Kansas Premium Fescue Blend; 8 lbs. PLS/1000 Sq. Ft.  
 Annual Rye grass; 3 lbs./1000 Sq. Ft.  
 Fertilizer -- 12-24-12 Ratio; 45 Lbs./Ac.  
 Mulch -- 2 Tons Prairie Hay/Ac.

All other disturbed areas within street R/W and lots are to be seeded as follows:

Seed -- Rye grass; 5 lbs./1000 Sq. Ft.

All costs associated with seeding including mobilization, preparation of ground, seeding, fertilizing, mulching, etc. shall be included in the L.S. bid item "Seeding".

An additional bid item for "Seeding, Temporary" has been included and may be used at the discretion of the design engineer. Temporary seed shall be Annual Rye at 5 lbs./1000 Sq. Ft. unless otherwise noted and shall be planted when permanent seed or sod cannot be used due to seasonal limitations. If the "Seeding, Temporary" bid item is not used, 100% of the pay item will be deducted from the contract. All costs associated with temporary seeding including mobilization, preparation of ground, seeding, etc., shall be included in the L.S. bid item "Seeding, Temporary".

13. The developer for this project is Ritchie Development, Kevin Mullen, (316)684-7300.

14. Mass grading, SWS construction and water line construction may begin while sanitary sewer project is active. Contractors will be expected to coordinate simultaneous construction activities.

15. The detention pond design meets the requirements of the stormwater manual.

16. **CONSTRUCTION SEQUENCE & PHASING**  
 The intent of the construction schedule is to complete the sewer, water, storm sewer, and grading that serve Lots 49-64, Blk D and Lots 28-33, Blk E as soon as possible. After the construction is complete for those lots and adjacent right-of-way, paving/sws construction will begin.

### Recommended Construction Sequence

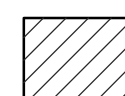
- Sanitary Sewer Line 1, Line 3 Sta 0+00 to Sta 6+62.4, Line 4 & Line 5 may be constructed in any order except for sanitary sewer service #1.
- Complete mass grading of lots and adjacent street right-of-ways for Lots 49-64, Blk D and Lots 28-33, Blk E.
- Install storm sewer and water line that serve Lots 49-64, Blk D and Lots 28-33, Blk E.
- The remaining sewer lines & services, and mass grading may be constructed in any order the contractor desires.

## Benchmarks

BM#1: RR spike in high line pole, 40' west and 30' south of Lot 60, Block D, Firefly Way Addition.  
 Elev. = 1399.54 NAVD88

BM#2: Benchmark disc in top of curb, adjacent to fire hydrant 15' south of SE corner of Lot 2, Block C, Firefly Way Addition.  
 Elev. = 1396.95 NAVD88

## Benefit District



# STORM WATER DRAIN IMPROVEMENTS to serve **FIREFLY WAY ADD. Ph. 4, 5 & 6**

## CITY OF WICHITA, KANSAS

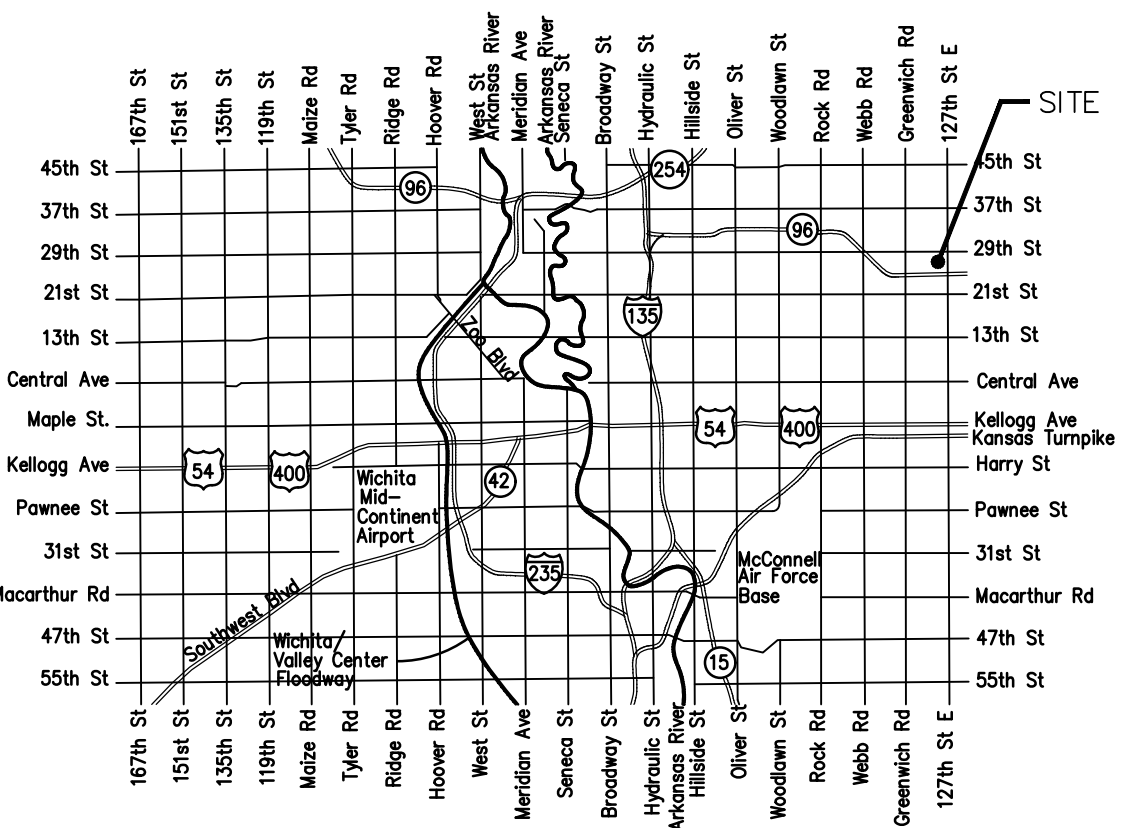
Gary Janzen, P.E. City Engineer

Project Number

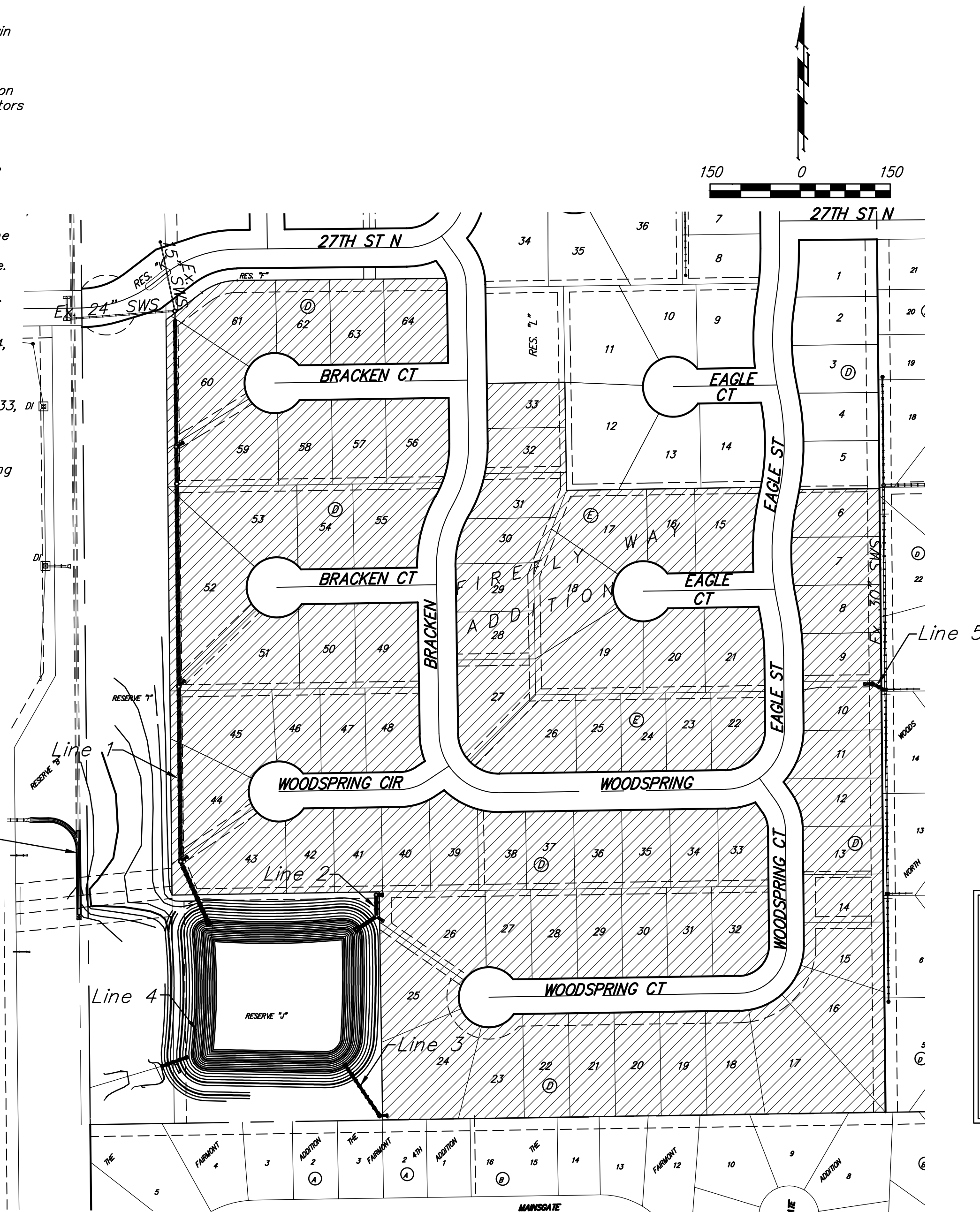
468-85186

O.C.A. Number

751598



Vicinity Map



## Sheet Index

Title Sheet	1
Line 1	2-4
Lines 2 & 3	5
Lines 4, 5 & 6	6
Mass Grading/Erosion Control Plan	7
Pond Plan	8
Pond Details	8A
Backyard Inlet Detail	9
Miscellaneous Detail	10
Headwall 15,18-24 Detail	11
Headwall 30-36 Detail	12
Mass Grading Detail	13
Erosion Control BMP Details	14-18
Coordinate Sheet	19
Copy of Plat	20

Existing trees shall be trimmed/removed ONLY with approval of the Developer. Trimming will be permitted only with chainsaws. Trees not in direct conflict with proposed new construction shall remain and be protected from damage. All trimming or removal shall be included in bid item "Site Clearing". Prior to construction, an on-site meeting with the developer will be held to discuss grading limits and tree trimming/clearing along the east line of the project. The intent of the work is to keep the main tree row and grade the drainage swales to the west of the trees.

### EARTH WORK TOTALS

	C.Y. Excavation	C.Y. Fill
Mass Grading	23,816	63,909
Pond Construction	38,153	1,366
Total	61,969	65,275

Earthwork quantities do not include correction factors and are for reference only. All cost associated with mass grading shall be included in the bid item "Grading, Mass".

**Stormwater Certification:**  
New Development or Redevelopment (Circle One)  
 Stormwater Permit # SW2017-0043  
 NOI Permit # S-WA20-0088

These construction plans were prepared in accordance with the current Stormwater management Regulations as set forth in the City of Wichita's Stormwater Management Ordinance 16.32 and the policies/guidelines presented in the Wichita/Sedgwick County Stormwater Manual.

Site Area (Acres) = 71.0 Ac. (total development)  
 Disturbed Area (Acres) = 71.0 Ac. (total development)  
 Water Quality Treatment: Provided by Wet Ponds  
 Downstream Channel Protection: Provided by Wet Ponds  
 Detention: Provided by 2 ponds on property  
 The BMP used for this development is Wet Ponds



November 2019



Baughman Company, P.A. 315 Ellis St. Wichita, KS 67211 P 316-262-7271 F 316-262-0143  
 ENGINEERING | SURVEYING | PLANNING | LANDSCAPE ARCHITECTURE