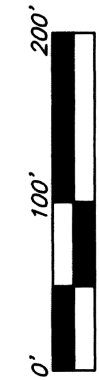
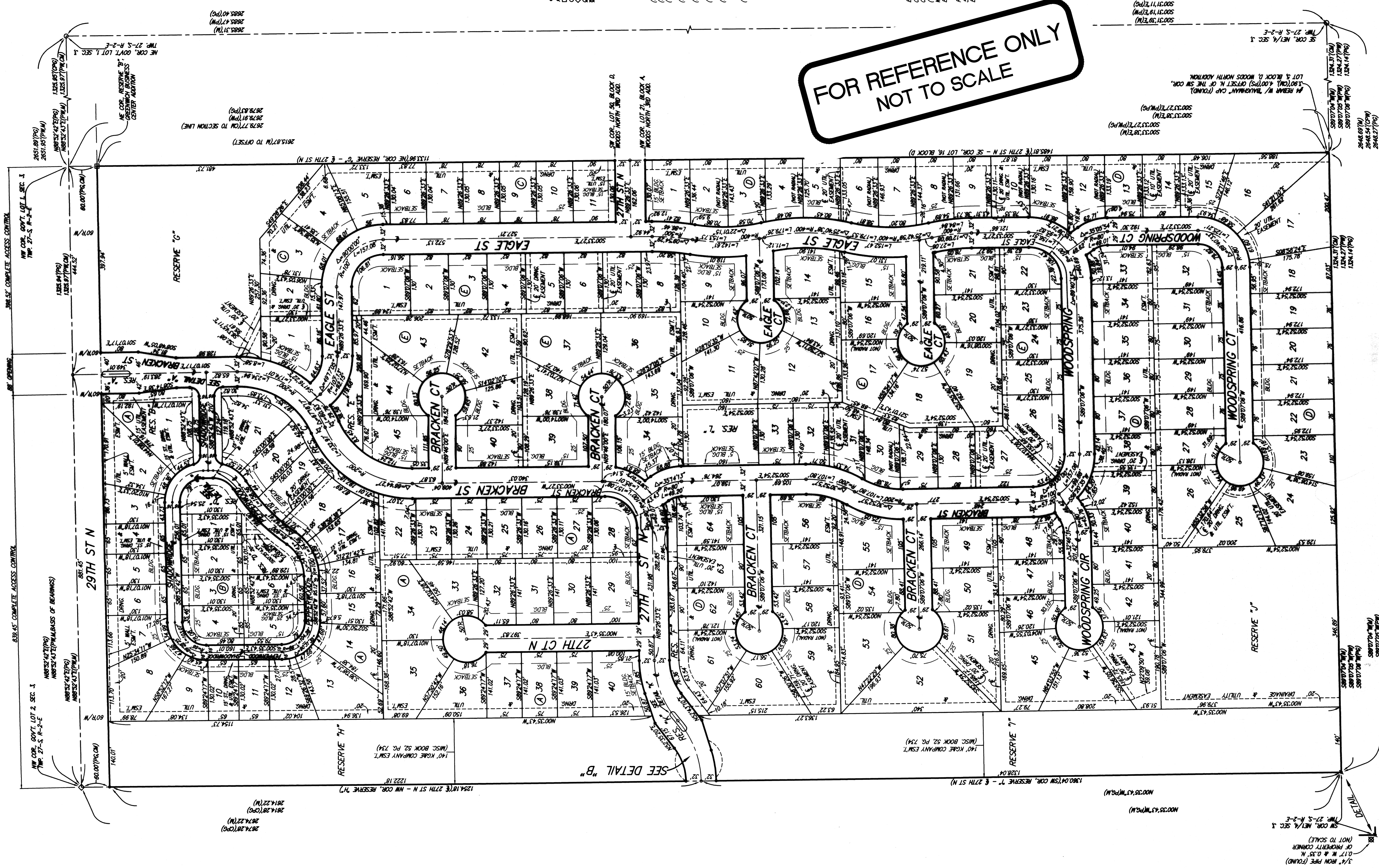


FIREFLY WAY AN ADDITION TO WICHITA, SEDGWICK COUNTY, KANSAS



- = REBAR W/ BAUGHMAN CAP (SET)
 - = REBAR W/ BAUGHMAN CAP (FOUND)
 - = 1/2" IRON PIPE (FOUND)(COMMON UNKNOWN)
 - = REBAR OVER STONE (FOUND)
 - = METAL CAP IN CONC (FOUND)
 - = 3/4" IRON PIPE (FOUND)(COMMON UNKNOWN)
- (M) = MEASURED
 - (PS) = PREVIOUS SURVEY
 - (CM) = CONCRETE FOUND
 - (W) = WELDED WIRE
 - (P) = PLATTED INFO. PER THE FURNISH. PER
 - (PM) = WOODS NORTH ADDITION
 - (CPM) = CALCULATED INFO. PER PLATTED INFO. PER
 - (PS) = GREENWICH BUSINESS CENTER ADDITION
 - (CPG) = GREENWICH BUSINESS CENTER ADDITION

LOT	BLOCK	ELEVATION	MARKER
1-4	C	1305.5	
24-26	D	1307.8	
41-43	D	1307.8	

BENCHMARK:
CITY OF WICHITA BENCHMARK DISC, 1307.7 E. & 146.6 N.
OF THE COR. LOT 1, BLOCK D, FIREFLY WAY, LOT 2, BLOCK A,
WOODS NORTH ADDITION, NE COR. LOT 2, BLOCK A,
ELEV. = 1307.69 WINDERS
RAILROAD SPINE IN E. FACE OF E. 71' POLE, 39.9' W. &
S&A S. OF NE COR. RESERVE 7, FIREFLY WAY,
ELEV. = 1309.54 WINDERS

FOR REFERENCE ONLY
NOT TO SCALE

NOTE:
A drainage plan has been developed for the plat and all
of property corners
of established grades or as modified with the
approval of the applicable City or County Engineer and
indicated to allow for the drainage of stormwater.