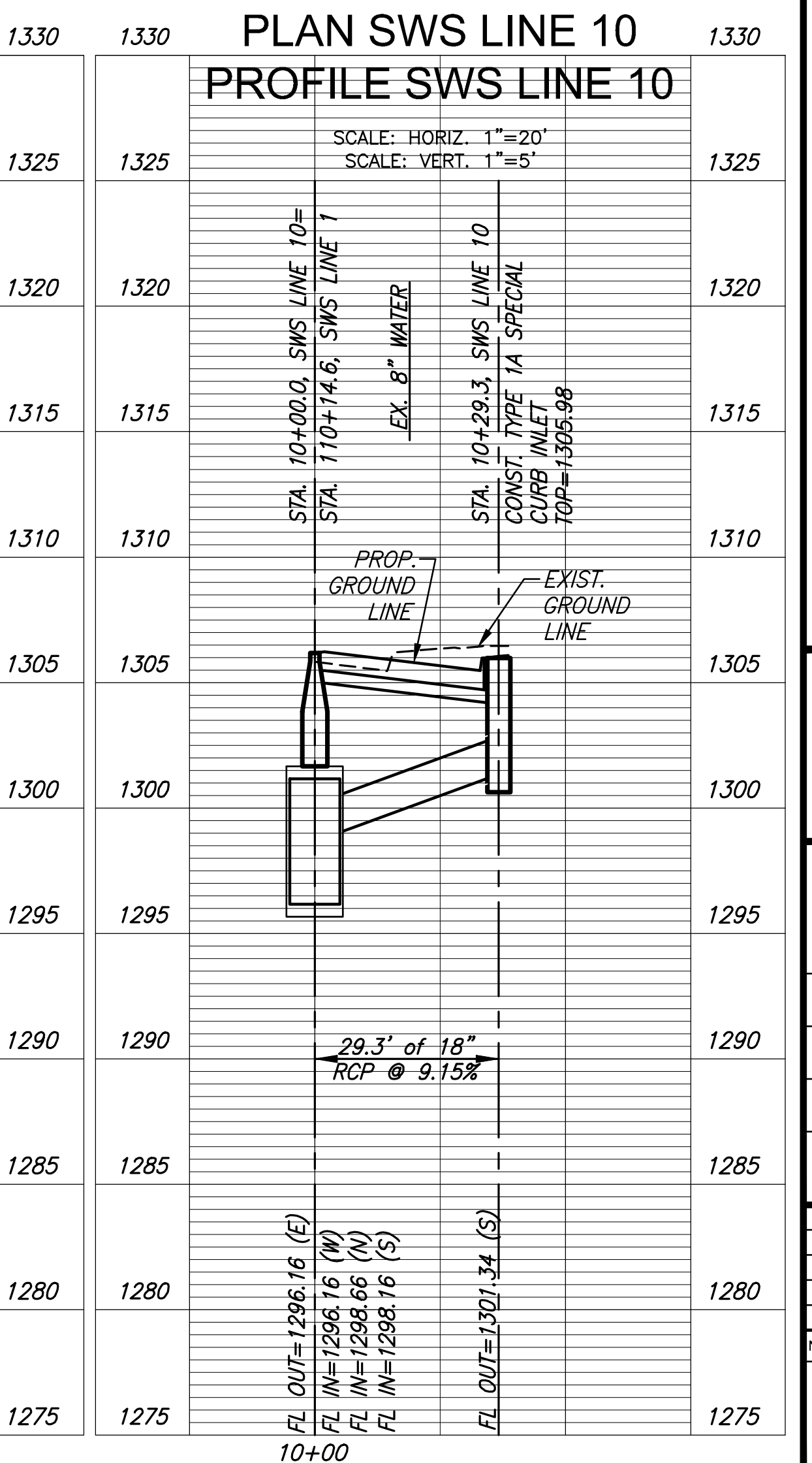
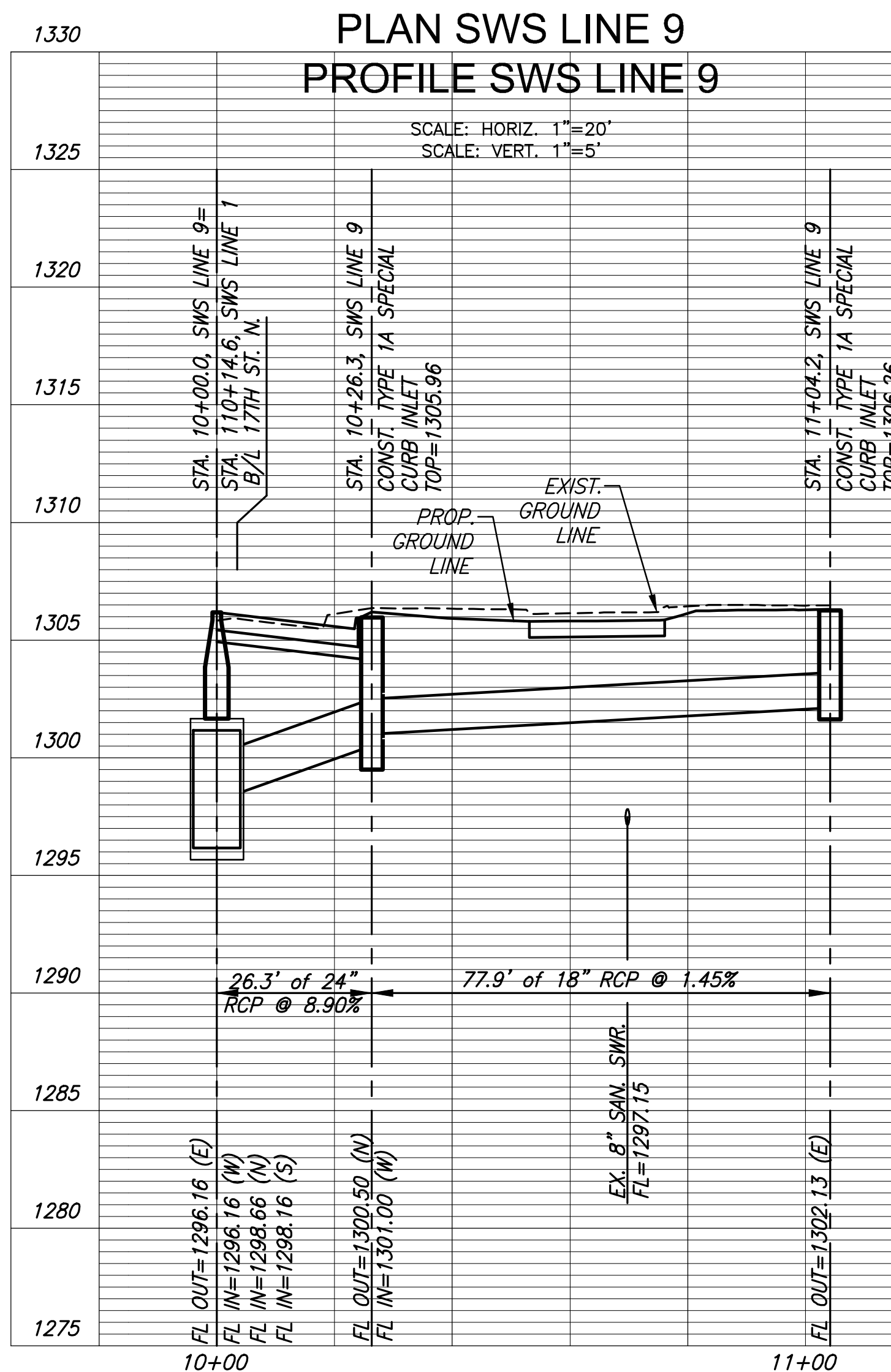
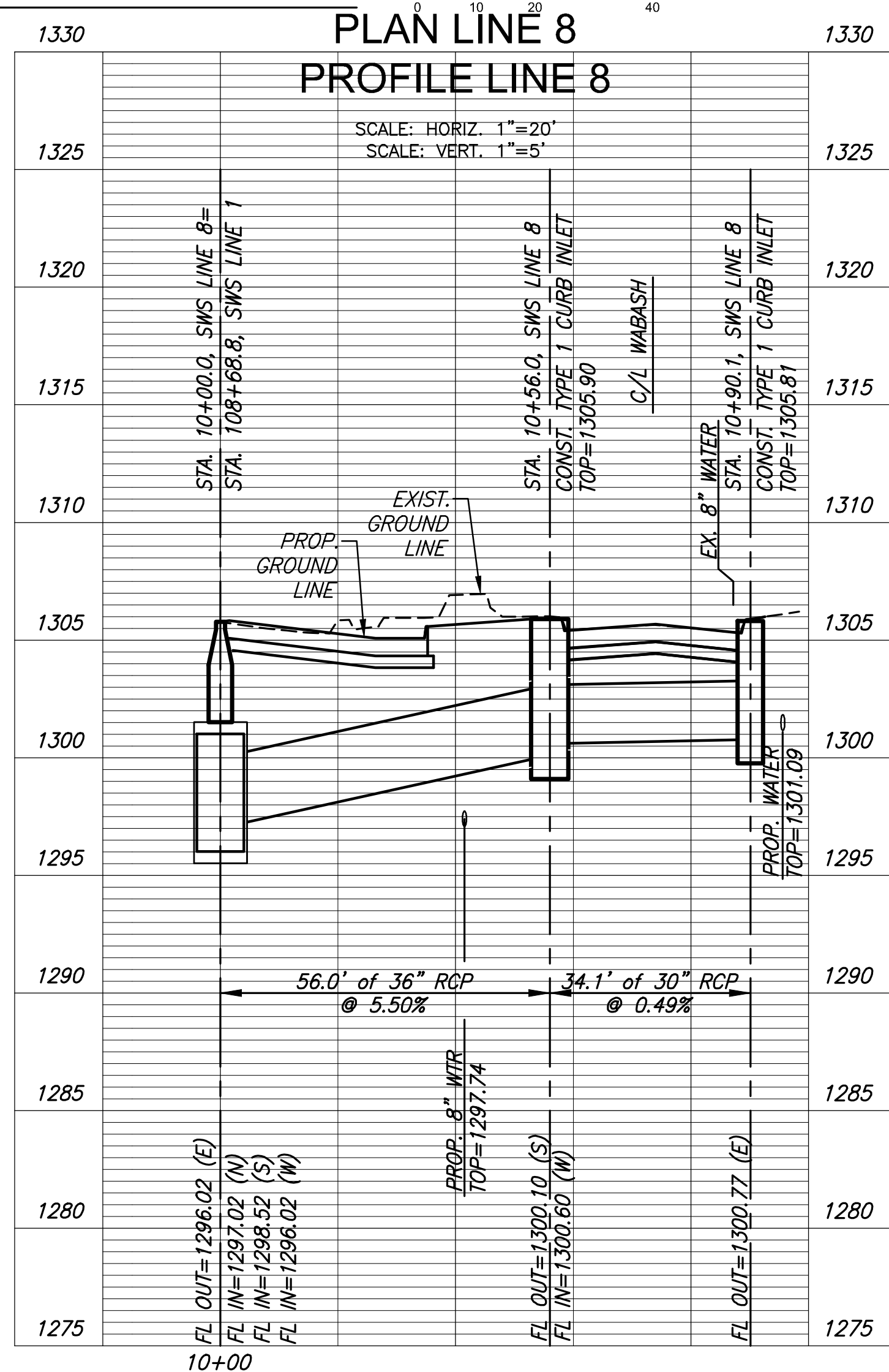
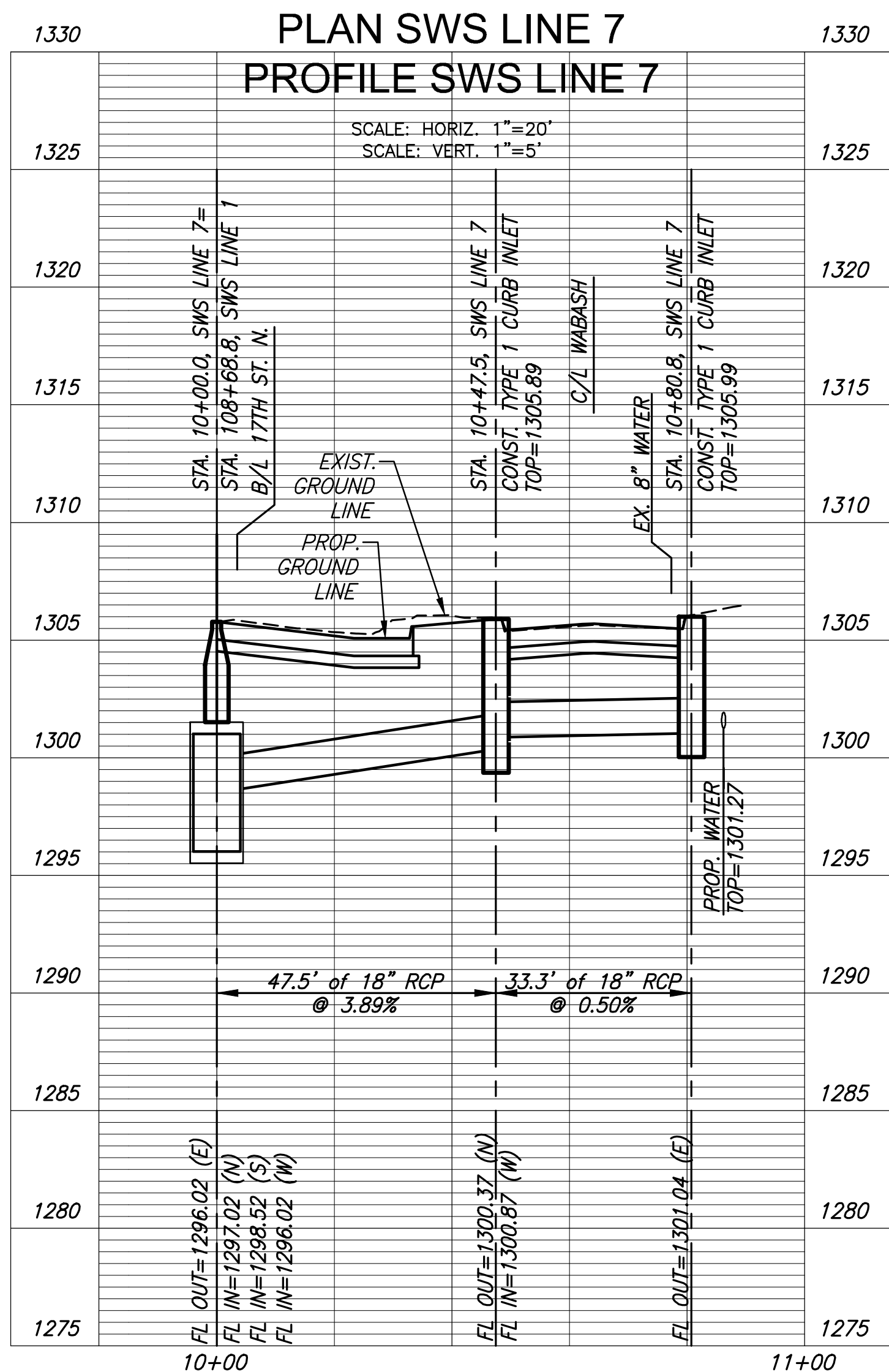
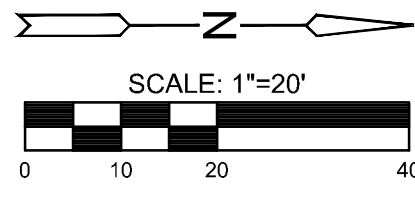
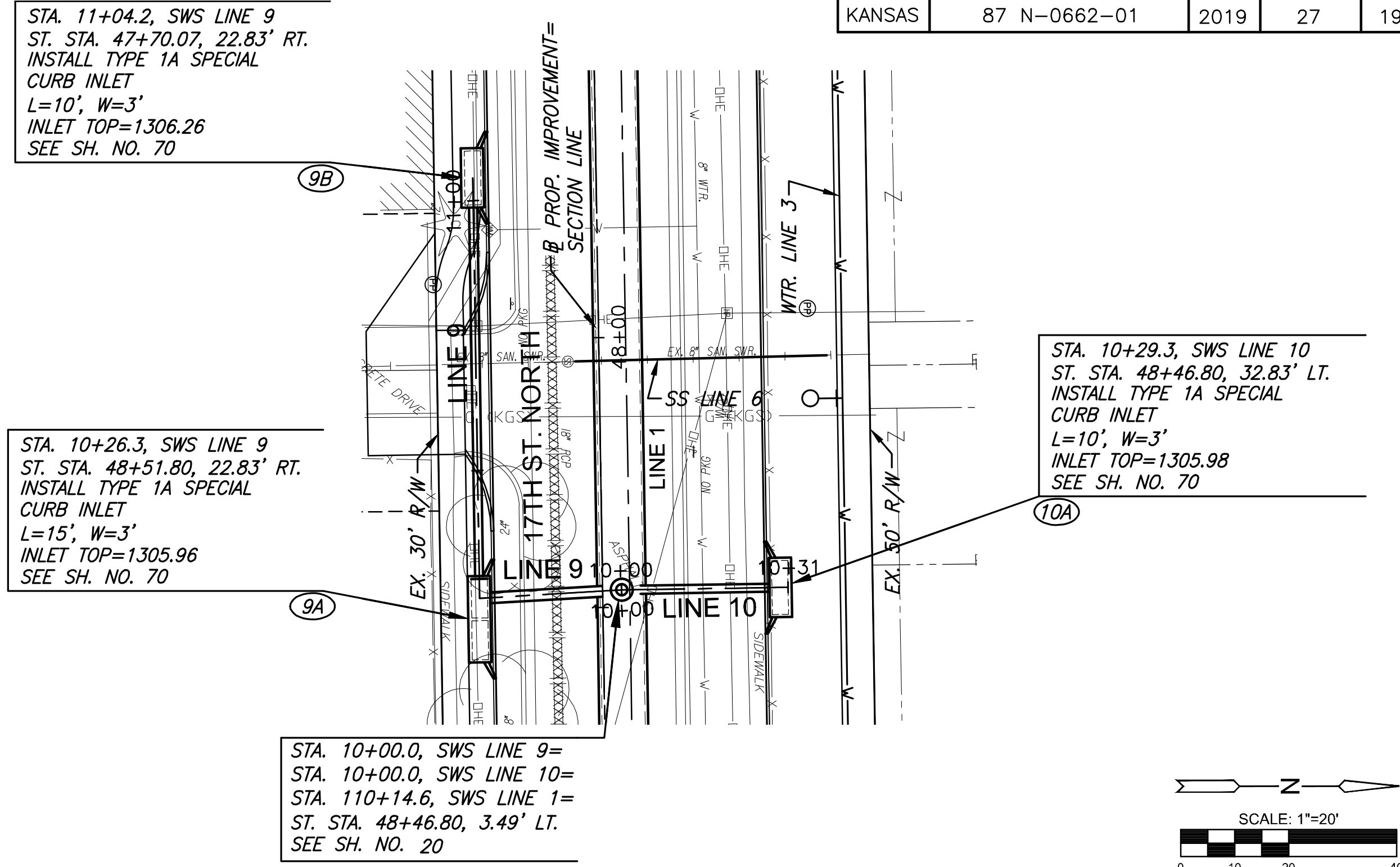
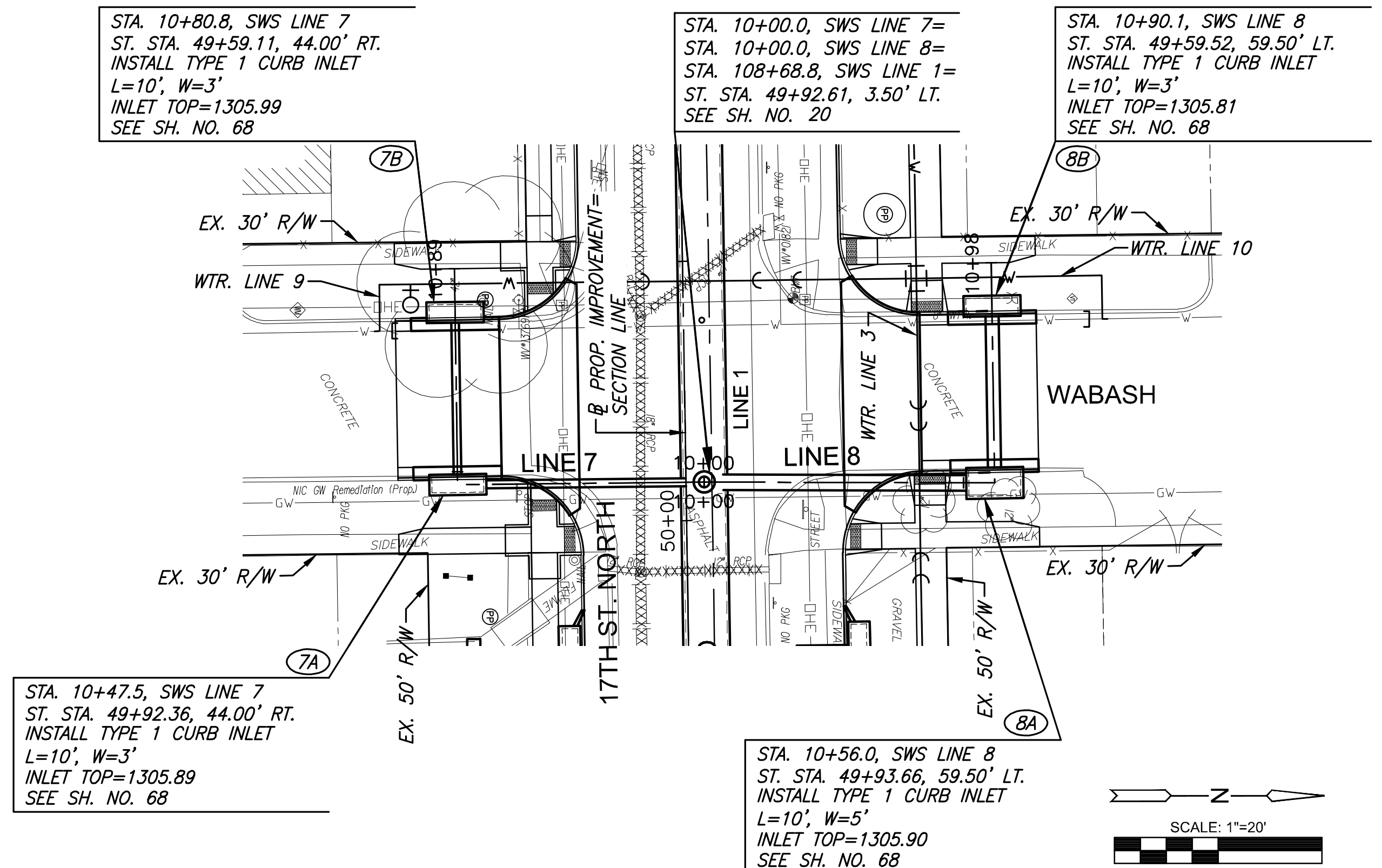


PLOTTED: Tuesday, September 03, 2019 @ 12:11 PM

J:\CIVIL\17\17DWS\SWS04\17-DP08.DWG

| STATE | PROJECT NO. | YEAR | SHEET NO. | TOTAL SHEETS |
|--------|--------------|------|-----------|--------------|
| KANSAS | 87 N-0662-01 | 2019 | 27 | 194 |



STREET IMPROVEMENTS FOR
17TH ST - BROADWAY TO I-135
FROM BROADWAY TO I-135

©2019 MKEC Engineering
All Rights Reserved
www.mkec.com
These drawings and their contents, including, but not limited to, all concepts, designs, & ideas are the exclusive property of MKEC Engineering (MKEC), and may not be used or reproduced in any way without the express consent of MKEC.

**STORM SEWER
PLAN & PROFILE
LINE 7, 8, 9, & 10**

| | | |
|---------------------|--------------|------|
| PROJECT NO. | 87 N-0662-01 | |
| DATE | 8/30/2019 | |
| SCALE | 1"=20' | |
| DESIGNED | JRA | |
| DRAWN | WNJ | |
| CHECKED | JRA | |
| NO. | REVISION | DATE |
| SHEET NO. 27 OF 194 | | |