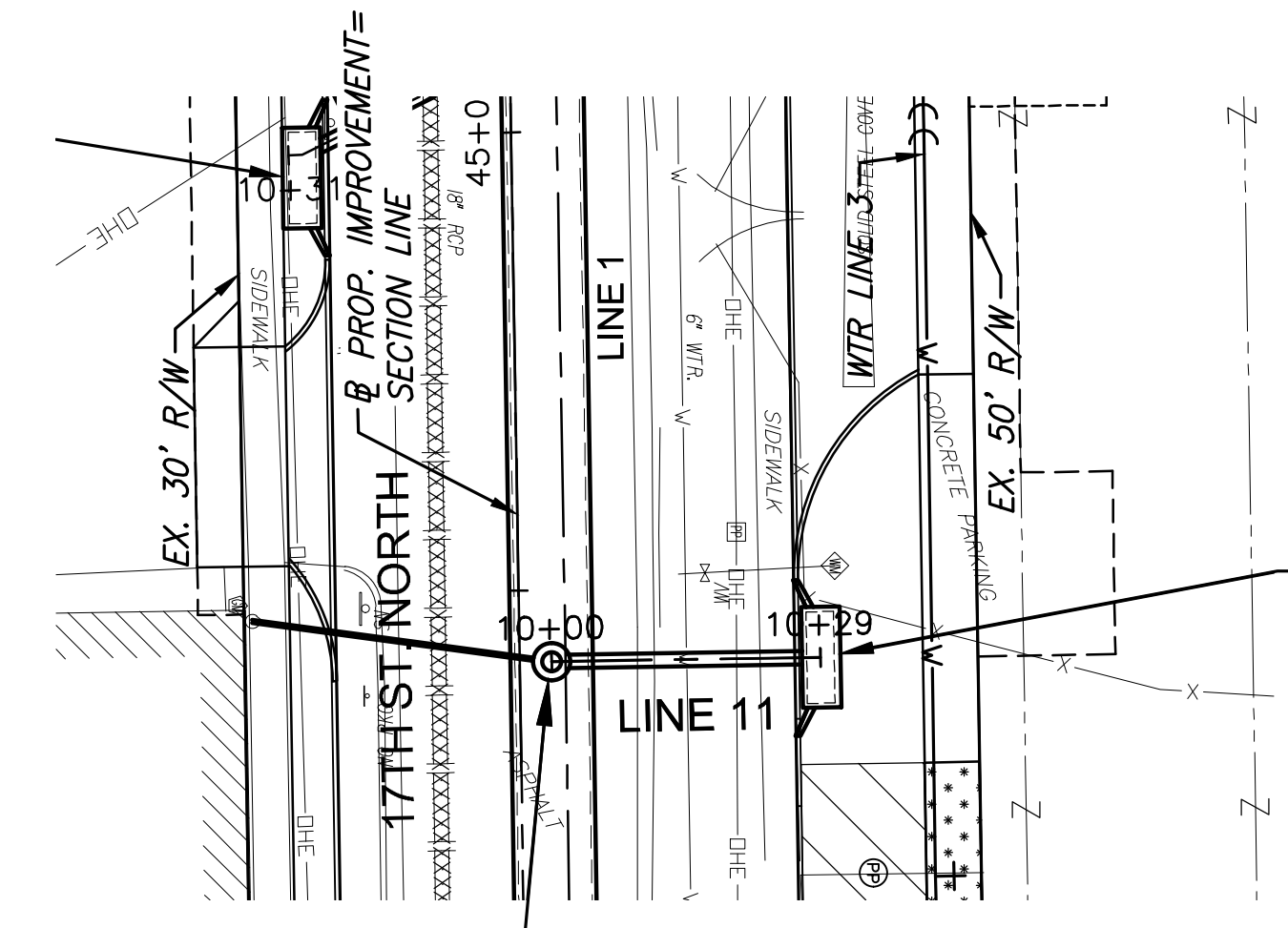


STATE	PROJECT NO.	YEAR	SHEET NO.	TOTAL SHEETS
KANSAS	87 N-0662-01	2019	28	194

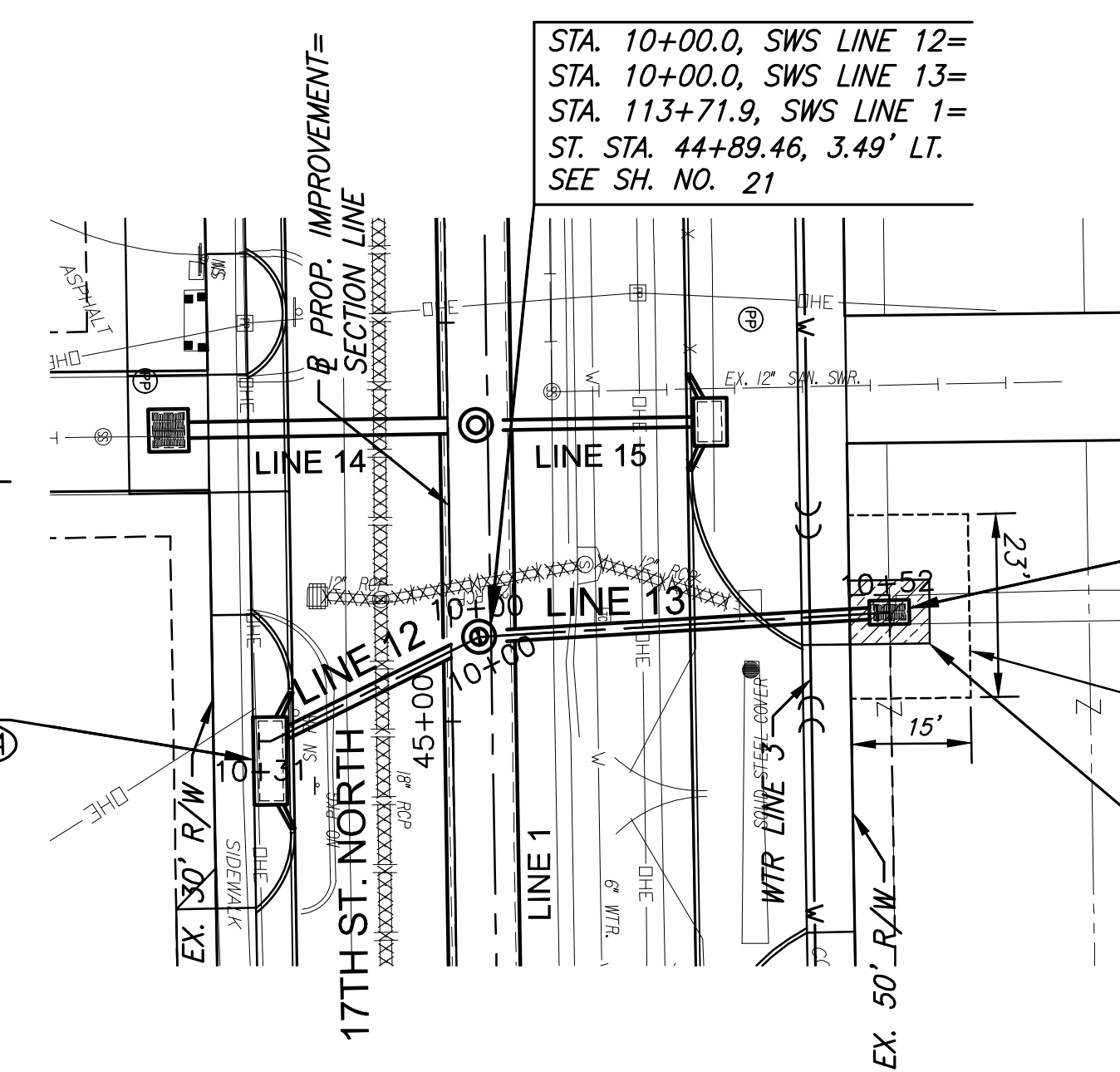
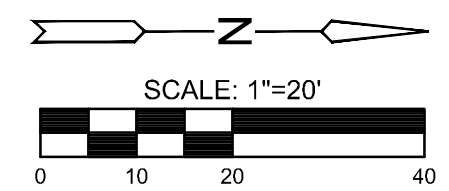


STREET IMPROVEMENTS FOR
17TH ST - BROADWAY TO I-135
FROM BROADWAY TO I-135



STA. 10+00.0, SWS LINE 11=
STA. 113+03.5, SWS LINE 1=
ST. STA. 45+57.84, 3.49' LT.
SEE SH. NO. 21

STA. 10+29.3, SWS LINE 11
ST. STA. 45+57.84, 32.83' LT.
INSTALL TYPE 1A SPECIAL
CURB INLET
L=10', W=3'
INLET TOP=1307.48
SEE SH. NO. 70

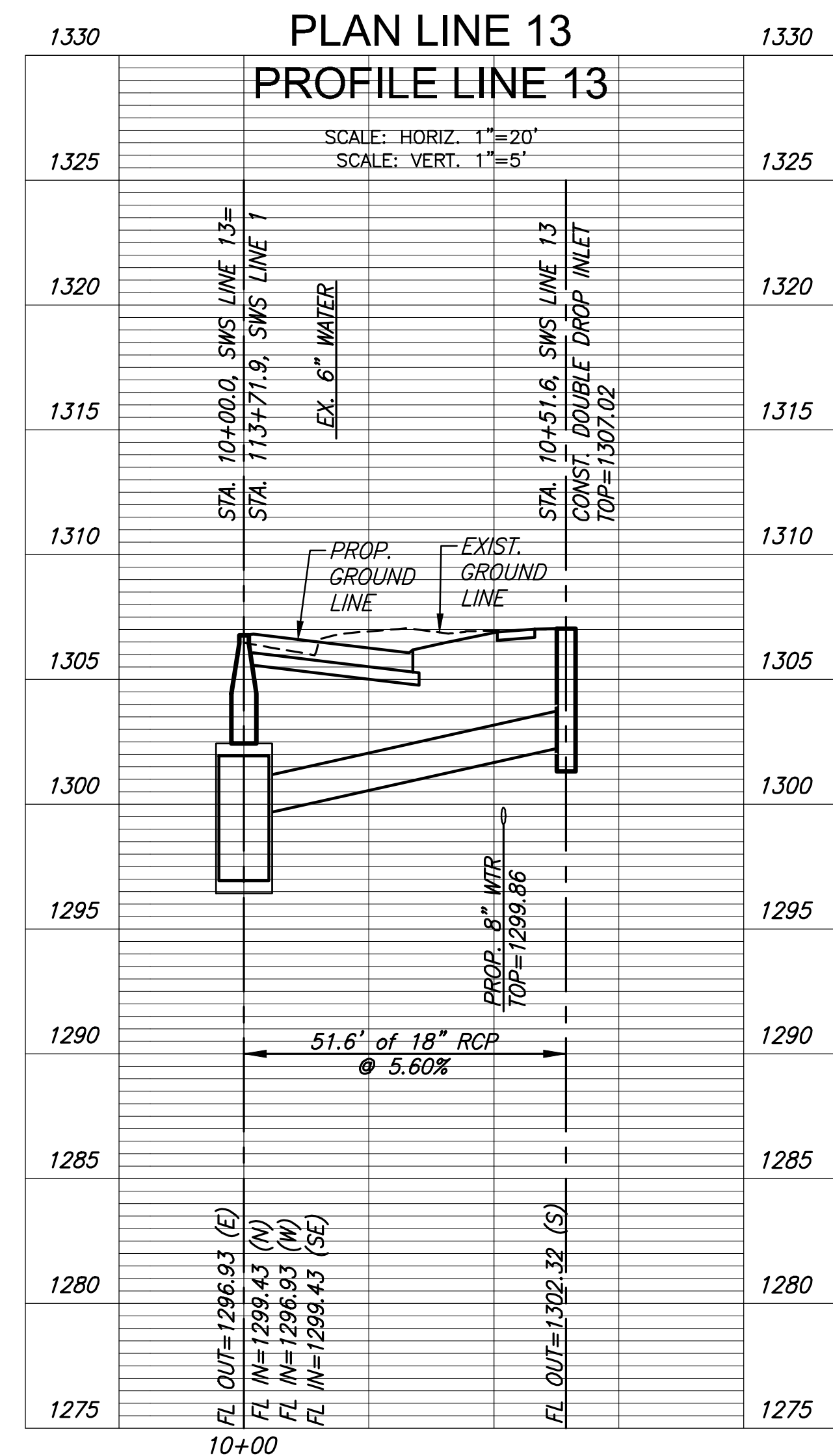
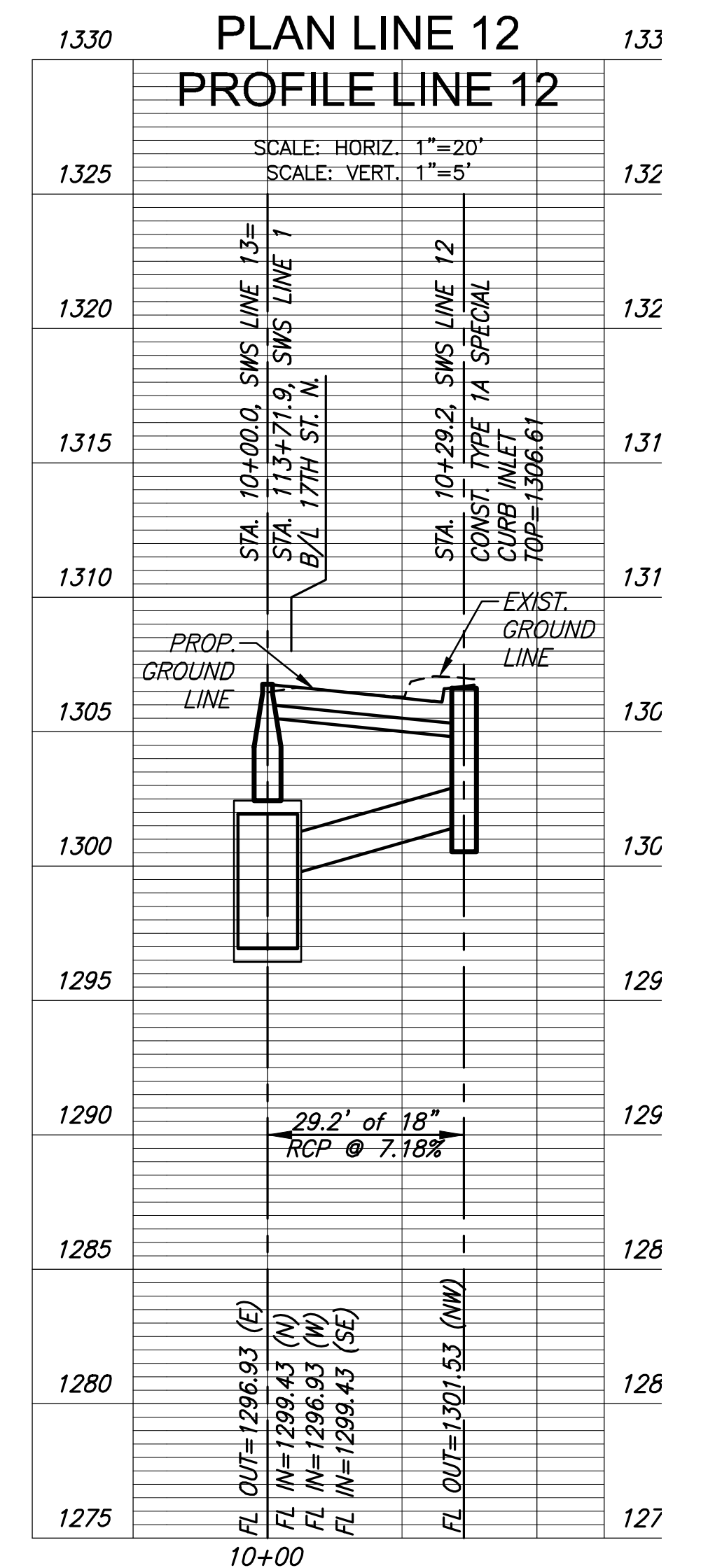
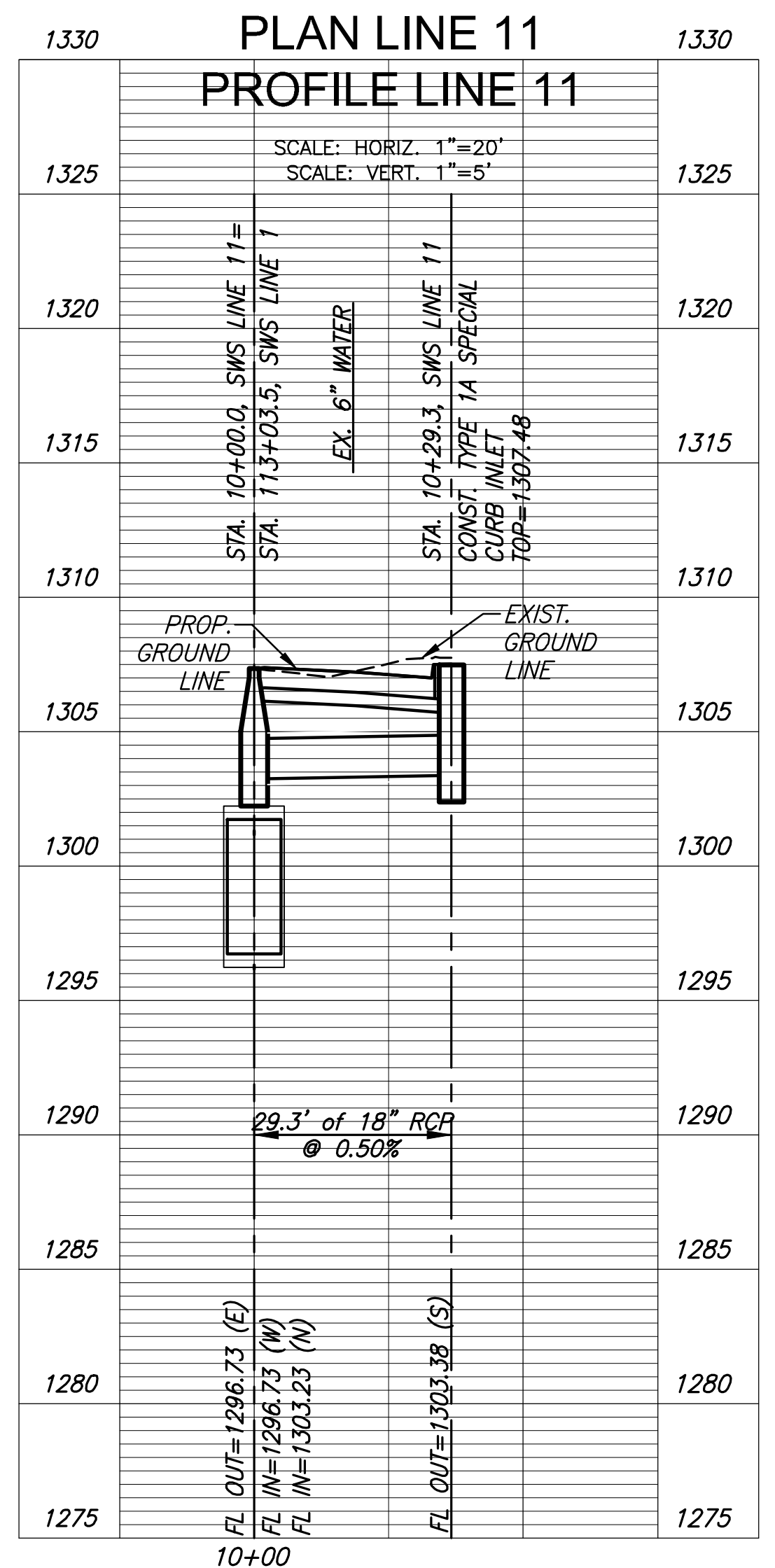
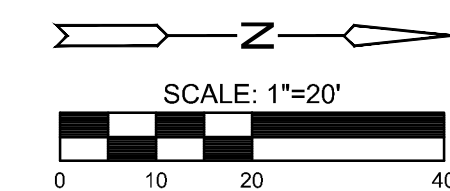


STA. 10+29.2, SWS LINE 12
ST. STA. 45+04.57, 22.83' RT.
INSTALL TYPE 1A SPECIAL
CURB INLET
L=10', W=3'
INLET TOP=1306.61
SEE SH. NO. 70

STA. 10+00.0, SWS LINE 12=
STA. 10+00.0, SWS LINE 13=
STA. 113+71.9, SWS LINE 1=
ST. STA. 44+89.46, 3.49' LT.
SEE SH. NO. 21

STA. 10+51.6, SWS LINE 13
ST. STA. 44+87.21, 55.00' LT.
INSTALL DOUBLE DROP INLET
L=4', W=2'
INLET TOP=1307.02
SEE SH. NO. 76

PERMANENT DRNG.
DEDICATION
10.0 L.F. OF CONCRETE PAVEMENT
REMOVED AND REPLACED



©2019
MKEC Engineering
All Rights Reserved
www.mkec.com
These drawings and their contents, including, but not limited to, all concepts, designs, & ideas are the exclusive property of MKEC Engineering (MKEC), and may not be used or reproduced in any way without the express consent of MKEC.

**STORM SEWER
PLAN & PROFILE
LINE 11, 12, & 13**

PROJECT NO.	87 N-0662-01	
DATE	8/30/2019	
SCALE	1"=20'	
DESIGNED	DRAWN	CHECKED
JRA	WNJ	JRA
NO.	REVISION	DATE
SHEET NO.		
28 OF 194		

PLOTTER: Tuesday, September 03, 2019 @ 01:47PM
J:\CIVIL\177\DWGS\SWS\04177_DP10.DWG