

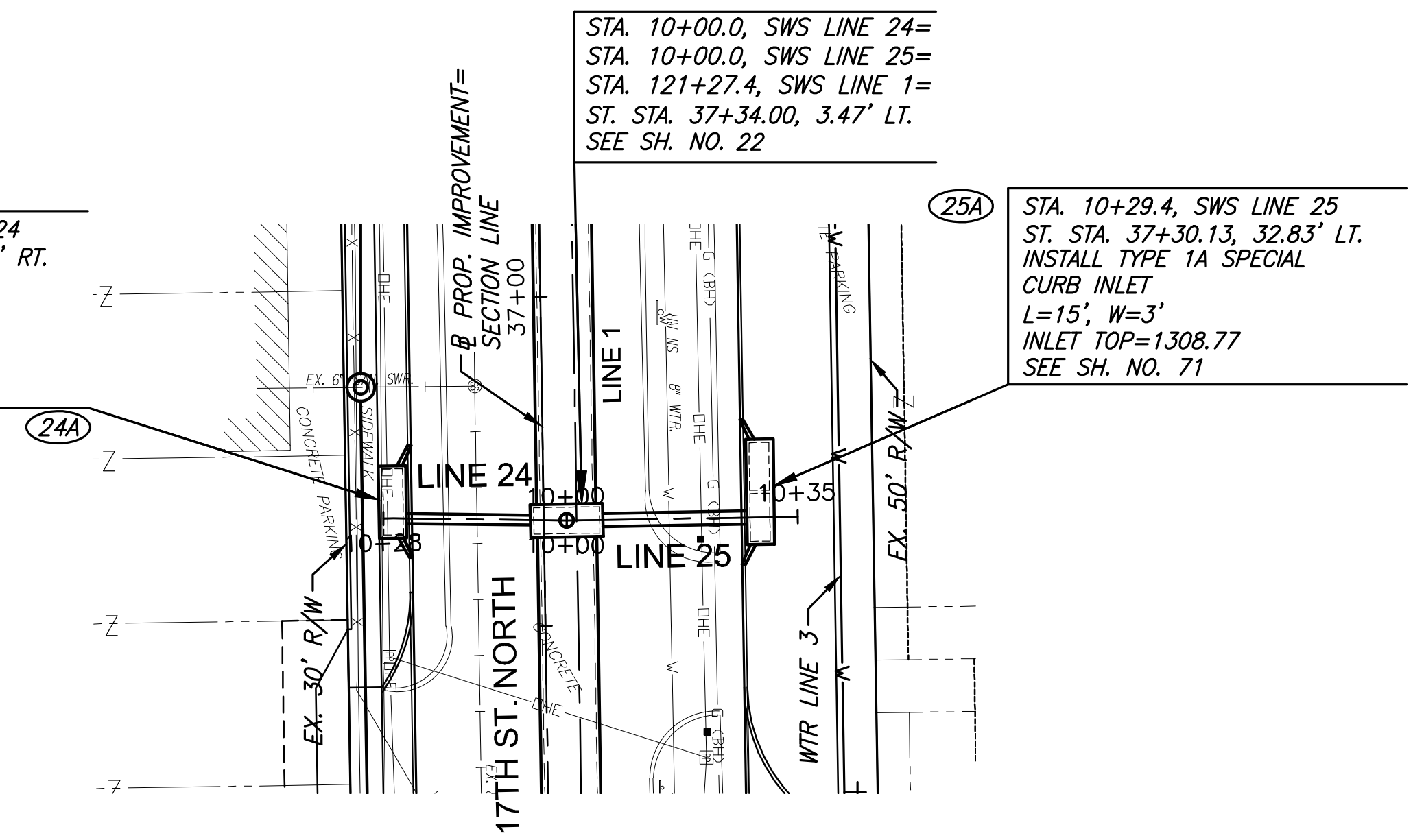
PLOTTED: Tuesday, September 03, 2019 @ 12:19PM

J:\CIVIL\0417\DWGS\SWS\0417\_DP13.DWG

STATE	PROJECT NO.	YEAR	SHEET NO.	TOTAL SHEETS
KANSAS	87 N-0662-01	2019	32	194

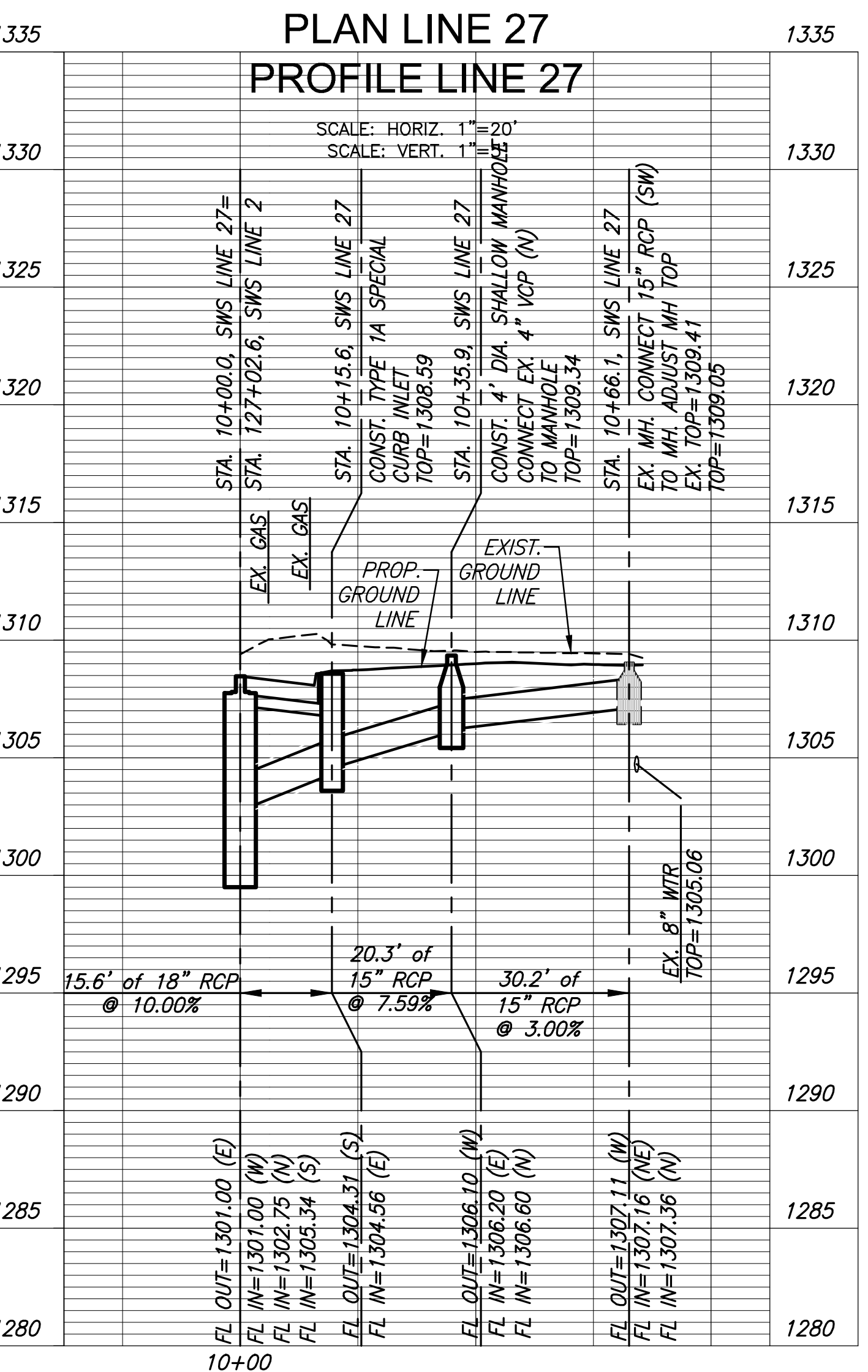
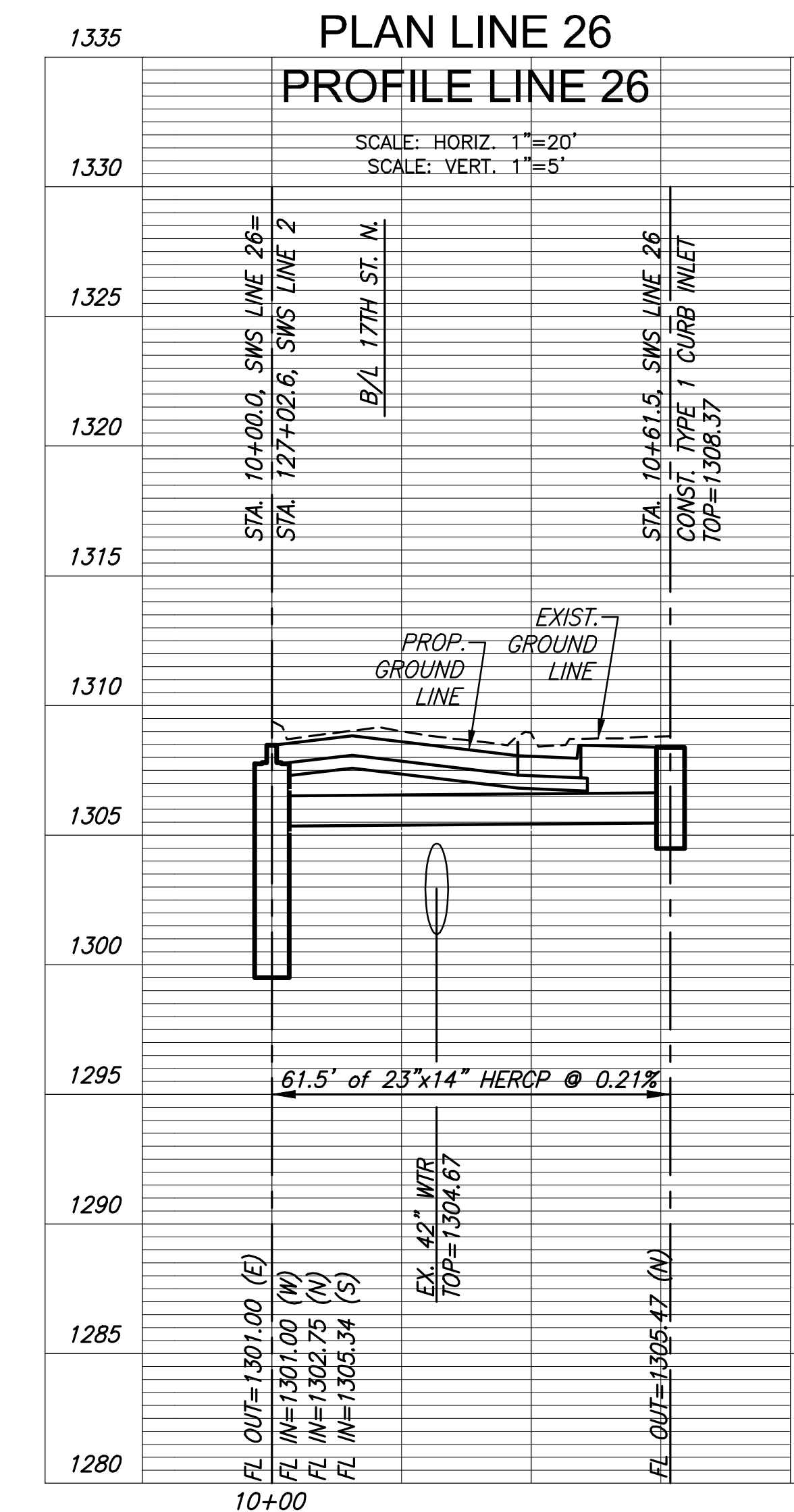
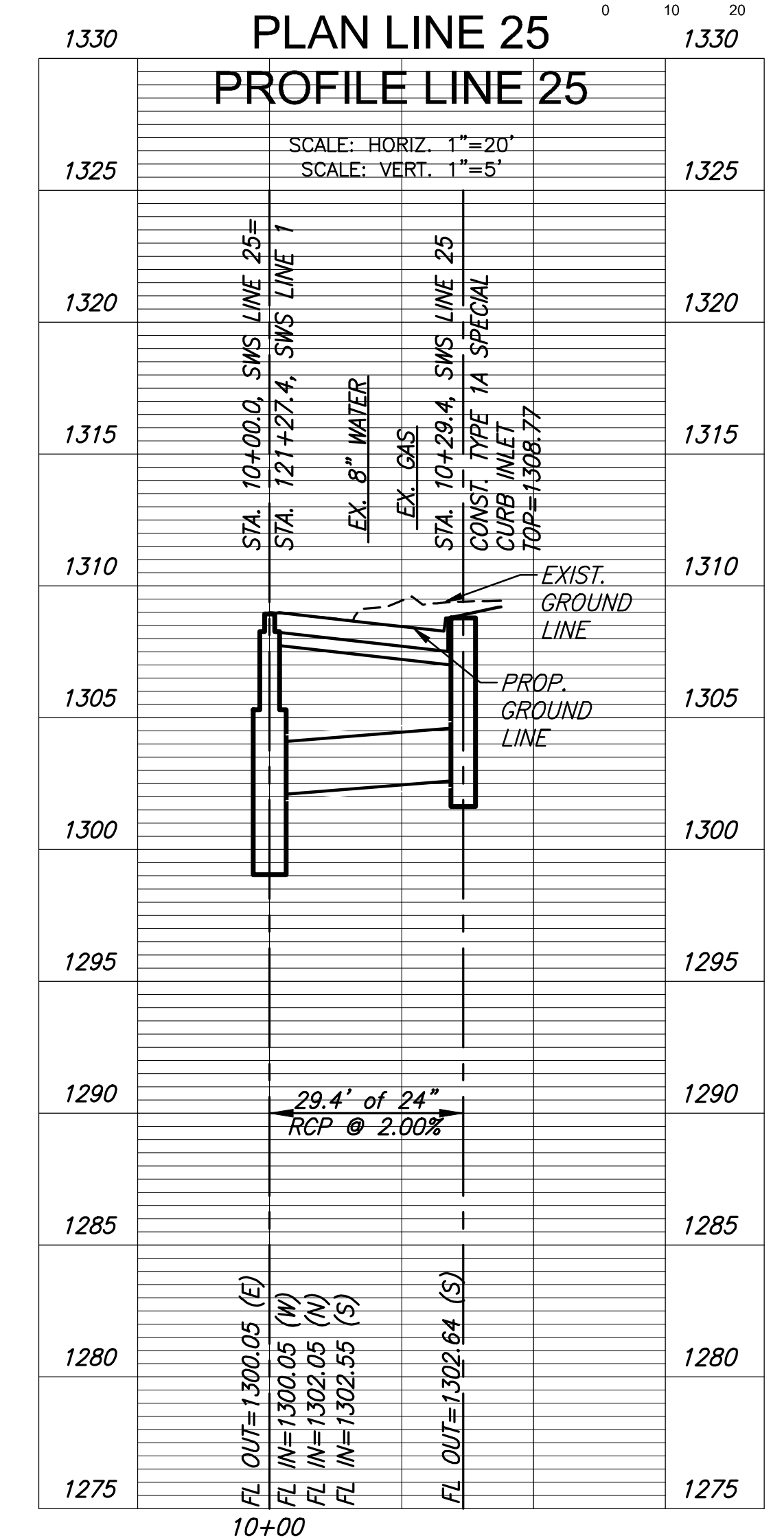
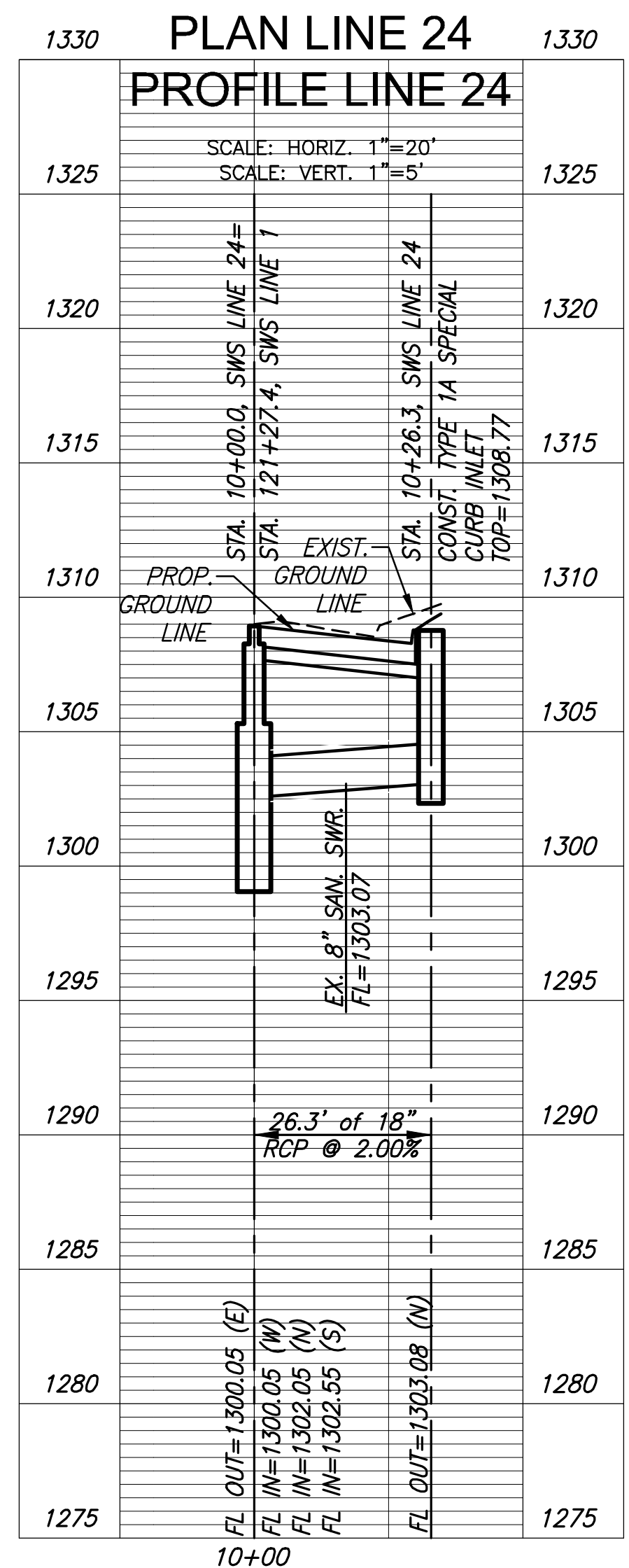


STA. 10+26.3, SWS LINE 24  
ST. STA. 37+30.76, 22.83' RT.  
INSTALL TYPE 1A SPECIAL  
CURB INLET  
L=10', W=3'  
INLET TOP=1308.77  
SEE SH. NO. 70

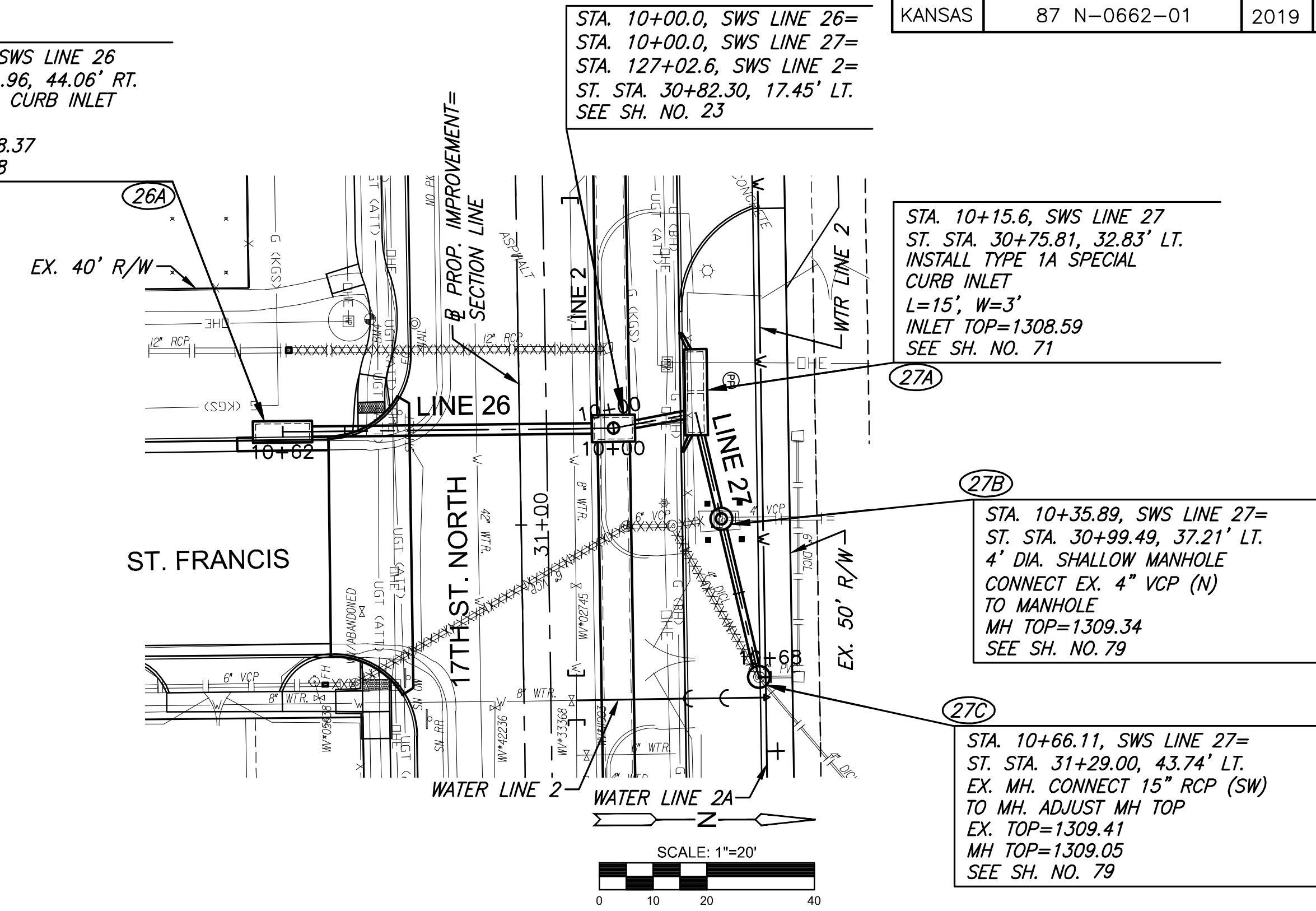


STA. 10+00.0, SWS LINE 24=  
STA. 10+00.0, SWS LINE 25=  
STA. 121+27.4, SWS LINE 1=  
ST. STA. 37+34.00, 3.47' LT.  
SEE SH. NO. 22

STA. 10+29.4, SWS LINE 25  
ST. STA. 37+30.13, 32.83' LT.  
INSTALL TYPE 1A SPECIAL  
CURB INLET  
L=15', W=3'  
INLET TOP=1308.77  
SEE SH. NO. 71



STA. 10+61.5, SWS LINE 26  
ST. STA. 30+81.96, 44.06' RT.  
INSTALL TYPE 1 CURB INLET  
L=10', W=3'  
INLET TOP=1308.37  
SEE SH. NO. 68

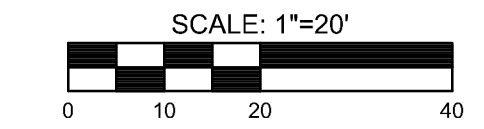


STA. 10+00.0, SWS LINE 26=  
STA. 10+00.0, SWS LINE 27=  
STA. 127+02.6, SWS LINE 2=  
ST. STA. 30+82.30, 17.45' LT.  
SEE SH. NO. 23

STA. 10+15.6, SWS LINE 27  
ST. STA. 30+75.81, 32.83' LT.  
INSTALL TYPE 1A SPECIAL  
CURB INLET  
L=15', W=3'  
INLET TOP=1308.59  
SEE SH. NO. 71

STA. 10+35.89, SWS LINE 27=  
ST. STA. 30+99.49, 37.21' LT.  
4' DIA. SHALLOW MANHOLE  
CONNECT EX. 4" VCP (N)  
TO MANHOLE  
MH TOP=1309.34  
SEE SH. NO. 79

STA. 10+66.11, SWS LINE 27=  
ST. STA. 31+29.00, 43.74' LT.  
EX. MH. CONNECT 15" RCP (SW)  
TO MH. ADJUST MH TOP  
EX. TOP=1309.41  
MH TOP=1309.05  
SEE SH. NO. 79



STREET IMPROVEMENTS FOR  
**17TH ST - BROADWAY TO I-135**  
FROM BROADWAY TO I-135

©2019 MKEC Engineering All Rights Reserved  
www.mkec.com  
These drawings and their contents, including, but not limited to, all concepts, designs, & ideas are the exclusive property of MKEC Engineering (MKEC), and may not be used or reproduced in any way without the express consent of MKEC.

STORM SEWER  
PLAN & PROFILE  
LINE 24, 25, 26, & 27

PROJECT NO.	87 N-0662-01	
DATE	8/30/2019	
SCALE	1"=20'	
DESIGNED	JRA	
DRAWN	WNJ	
CHECKED	JRA	
NO.	REVISION	DATE
SHEET NO. 32 OF 194		