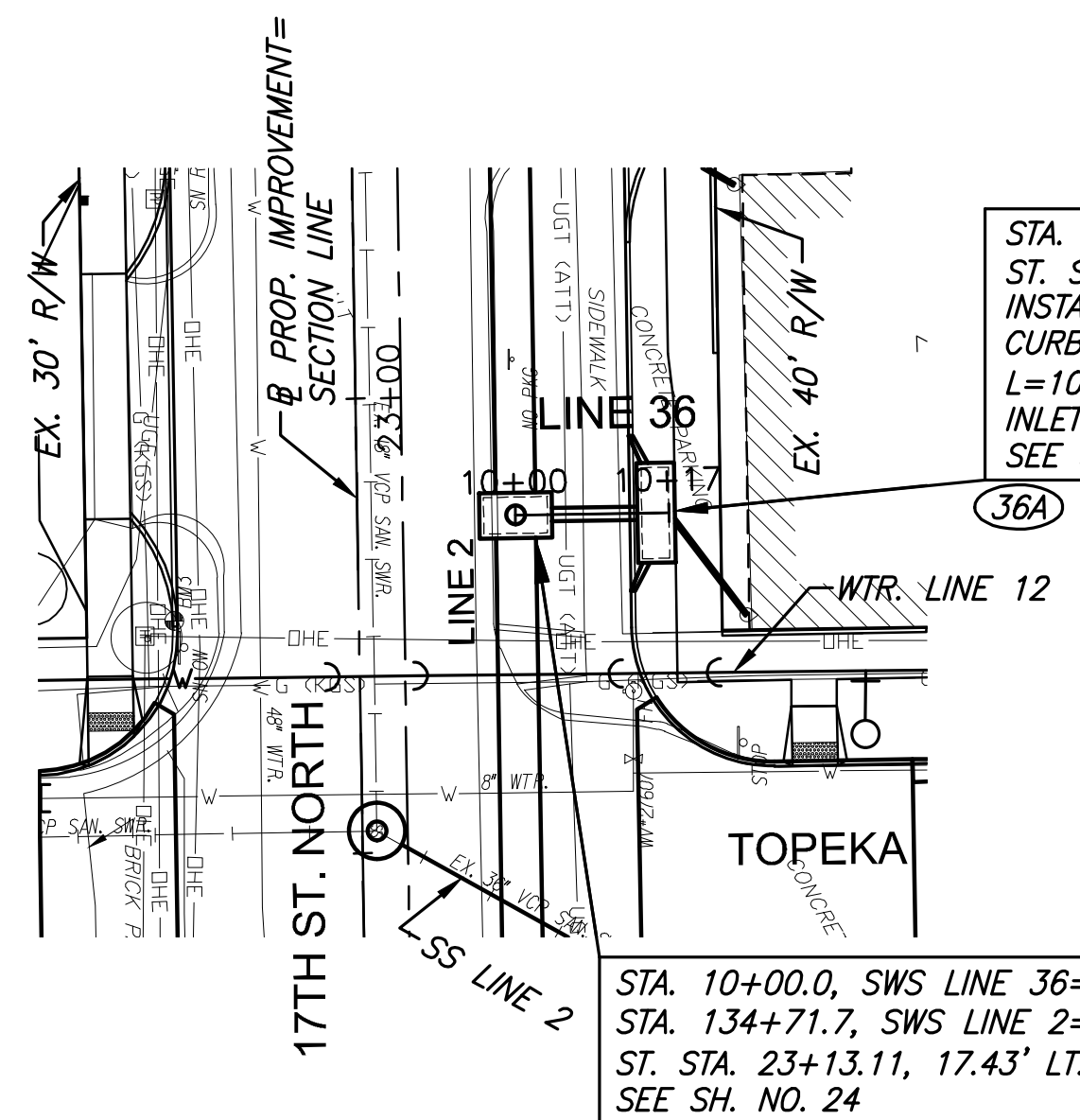


STATE	PROJECT NO.	YEAR	SHEET NO.	TOTAL SHEETS
KANSAS	87 N-0662-01	2019	37	194



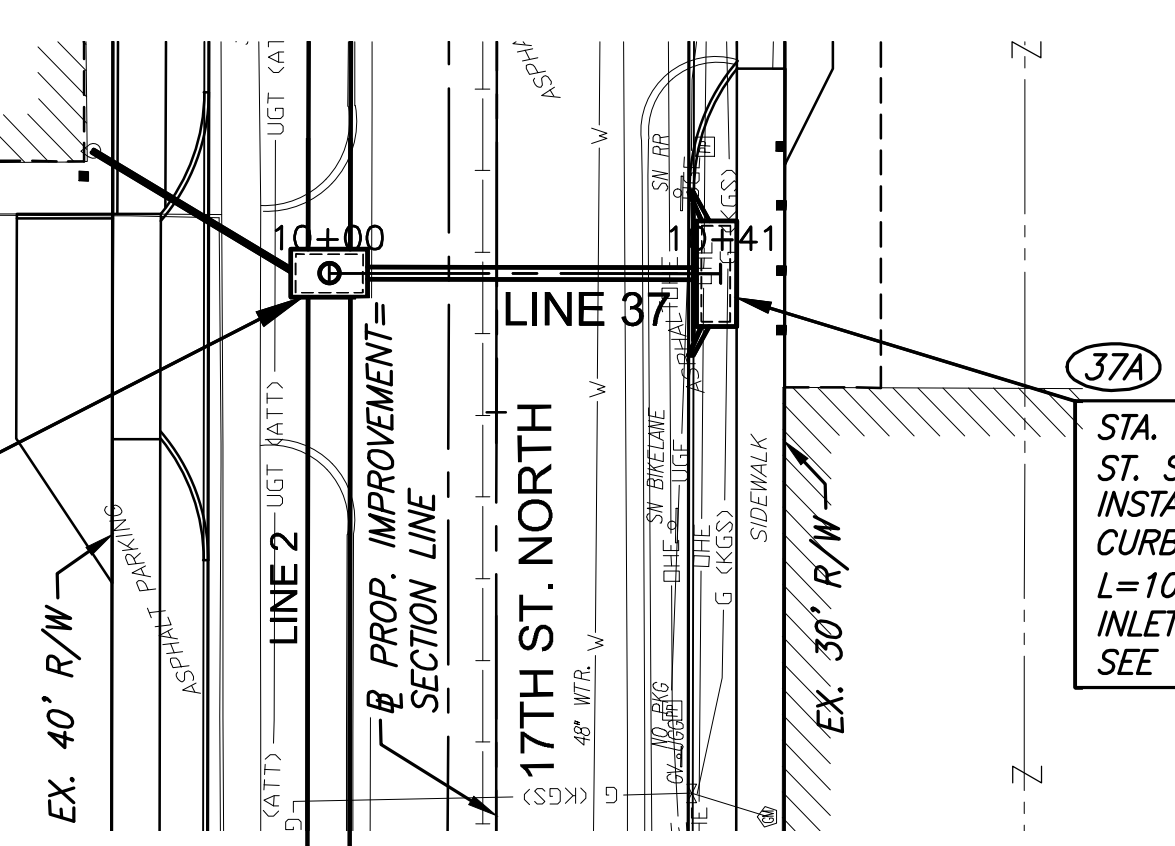
PLOTTED: Tuesday, September 03, 2019 @ 12:27PM
 J:\CIVIL\817\DWG\SWS\817-DP18.DWG



STA. 10+15.4, SWS LINE 36
 ST. STA. 23+13.11, 32.83' LT.
 INSTALL TYPE 1A SPECIAL
 CURB INLET
 L=10', W=3'
 INLET TOP=1310.76
 SEE SH. NO. 70

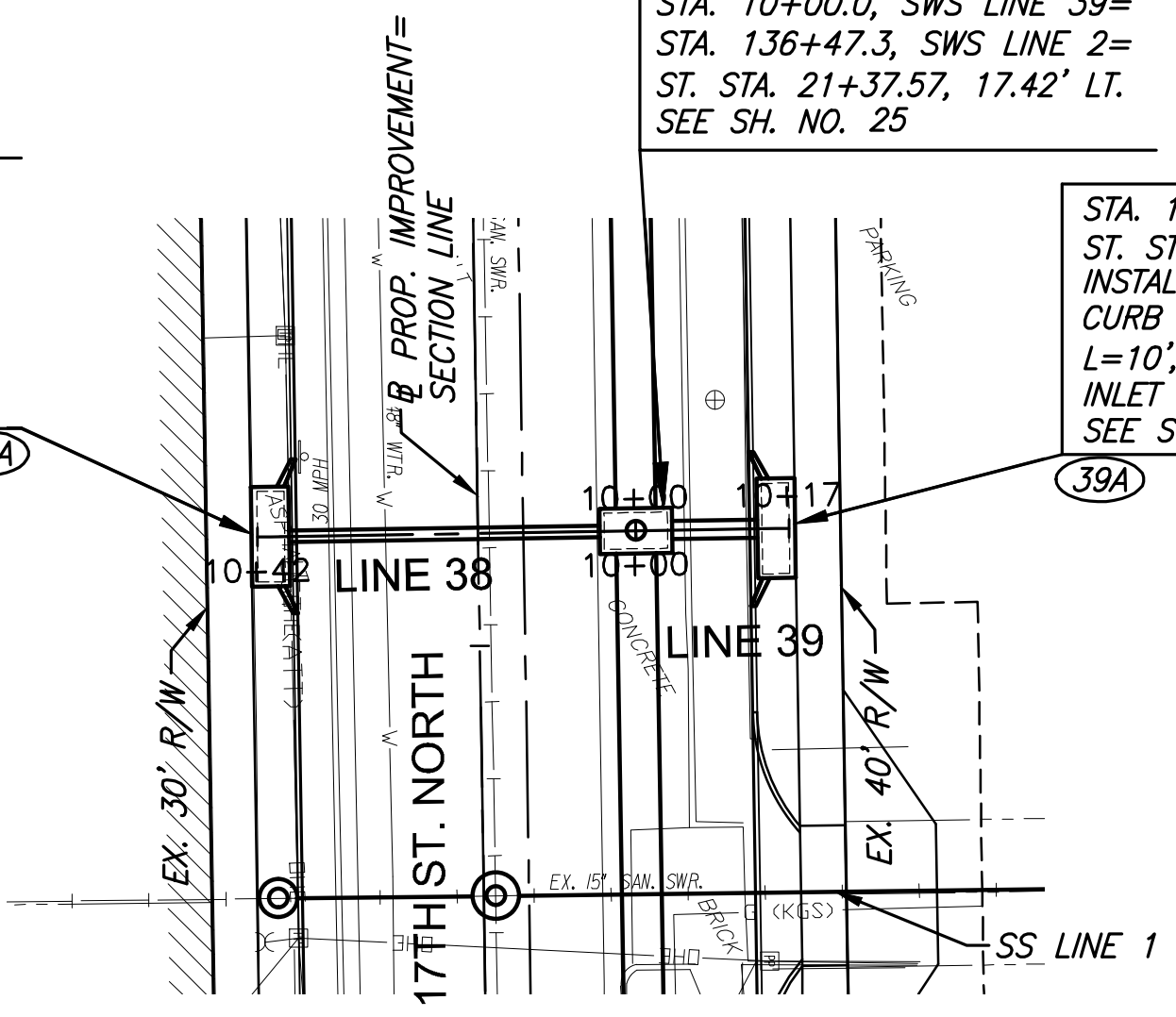
STA. 10+00.0, SWS LINE 37=
 STA. 135+20.4, SWS LINE 2=
 ST. STA. 23+13.11, 17.43' LT.
 SEE SH. NO. 24

STA. 10+00.0, SWS LINE 36=
 STA. 134+71.7, SWS LINE 2=
 ST. STA. 23+13.11, 17.43' LT.
 SEE SH. NO. 24



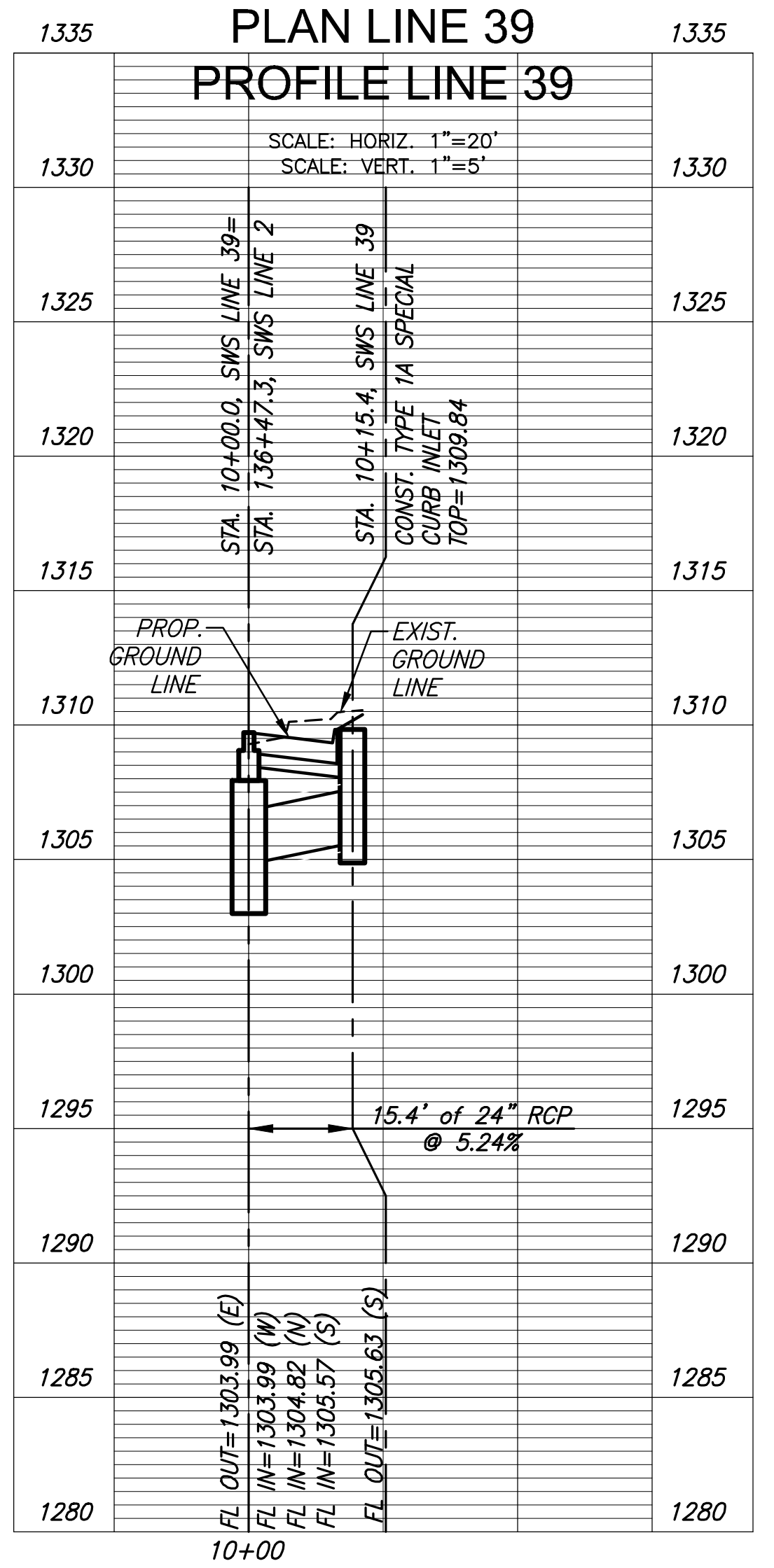
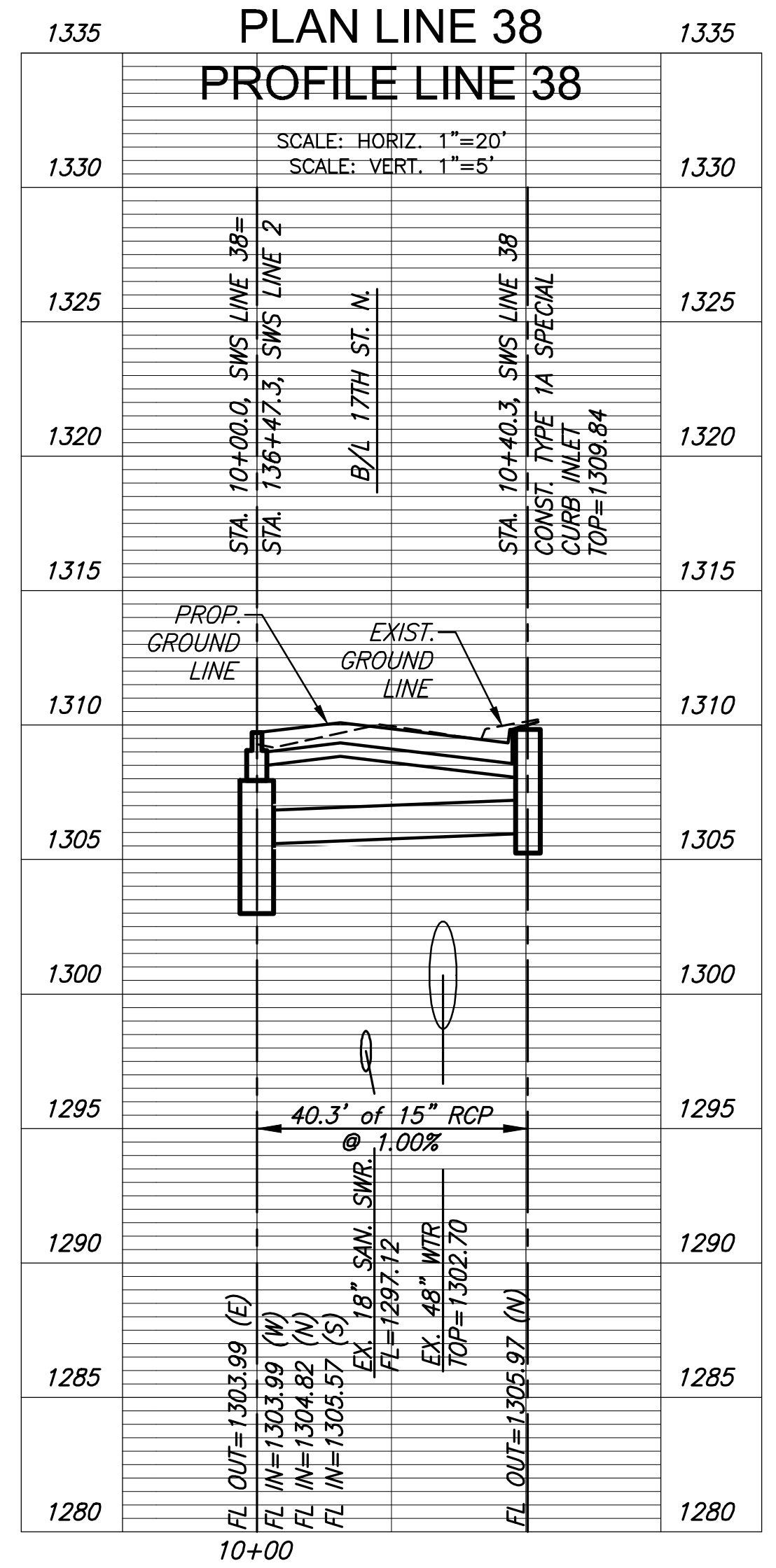
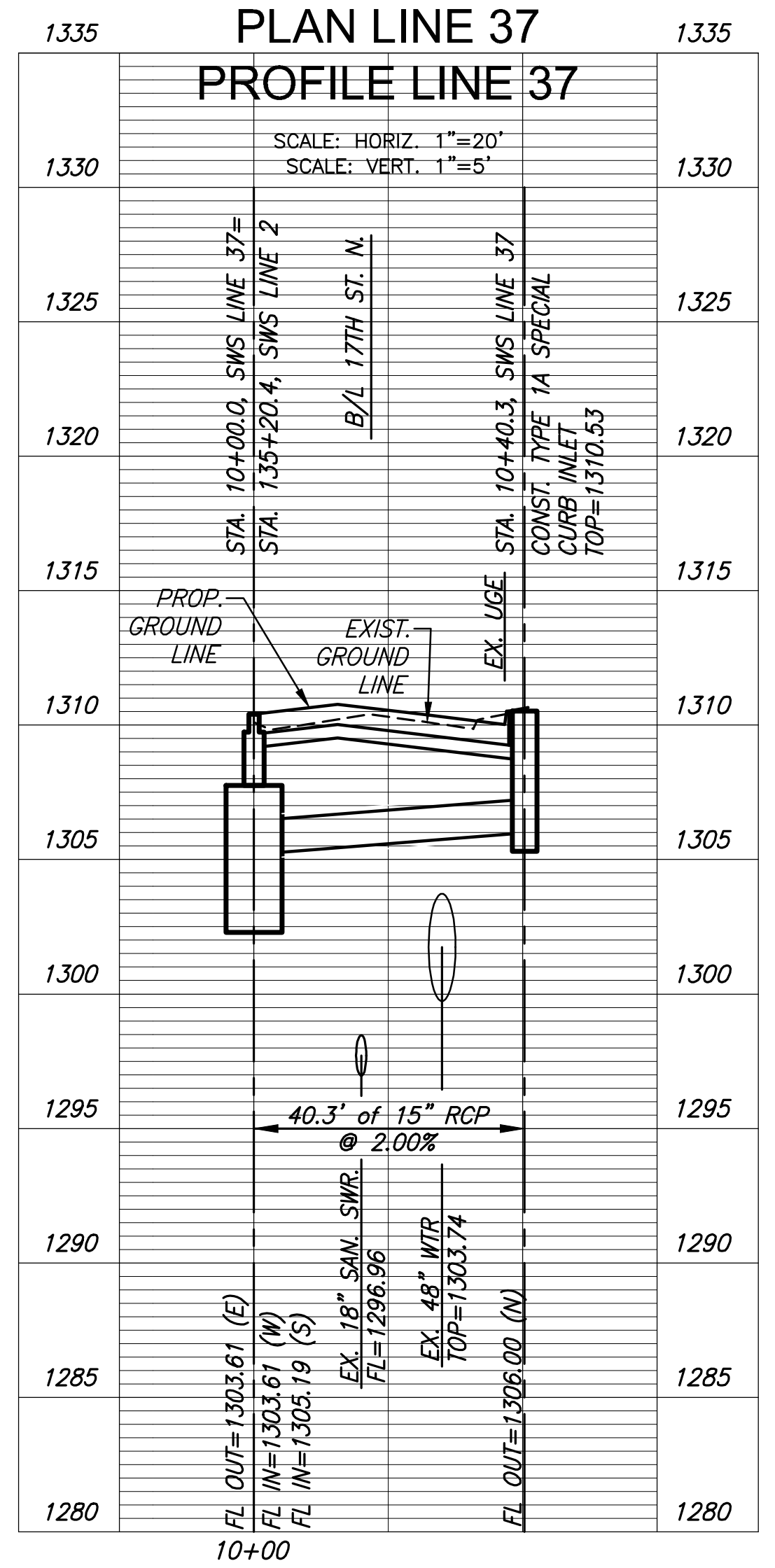
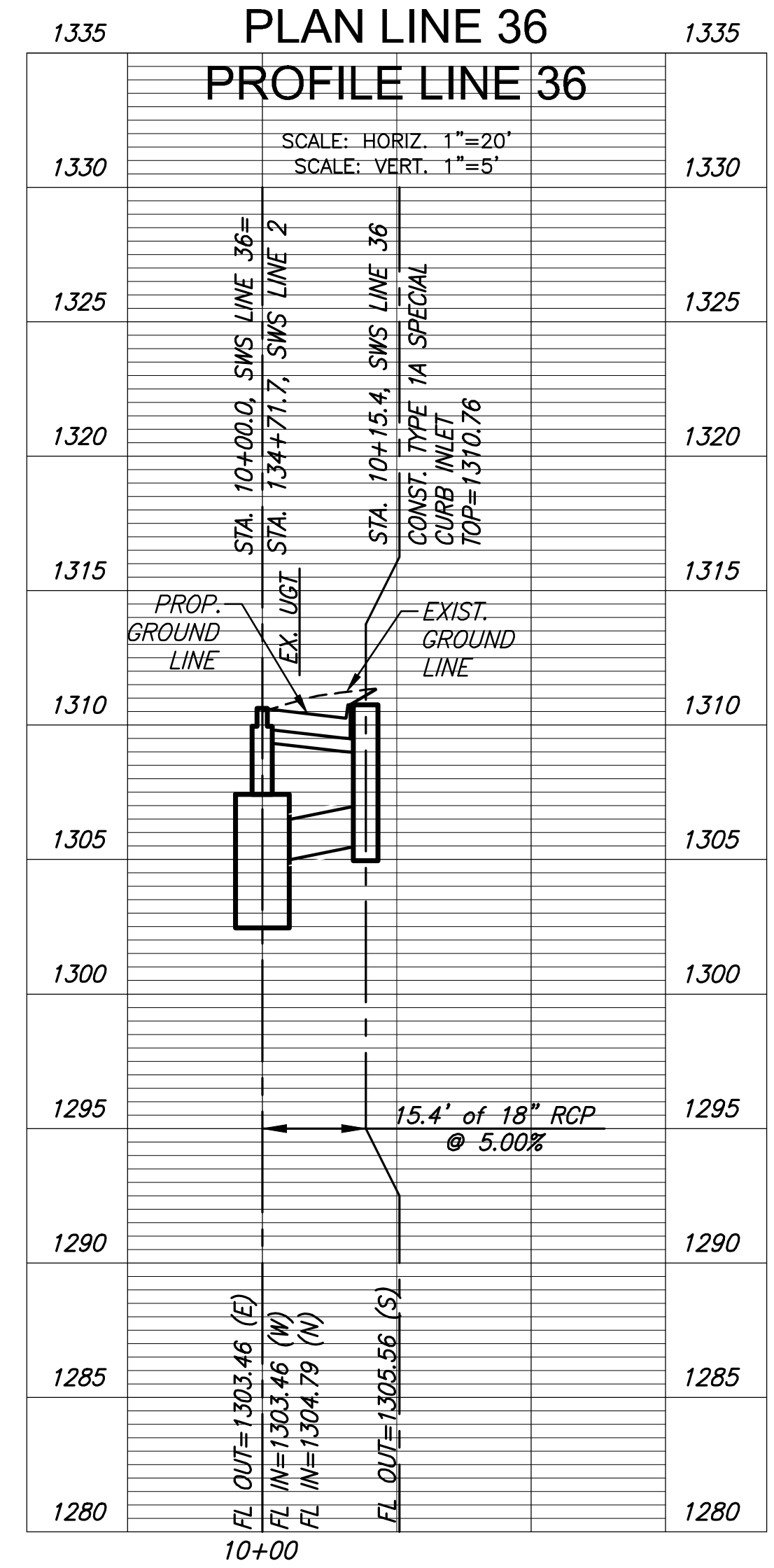
STA. 10+40.3, SWS LINE 37
 ST. STA. 22+64.46, 22.83' RT.
 INSTALL TYPE 1A SPECIAL
 CURB INLET
 L=10', W=3'
 INLET TOP=1310.53
 SEE SH. NO. 70

STA. 10+40.3, SWS LINE 38
 ST. STA. 21+37.57, 22.83' RT.
 INSTALL TYPE 1A SPECIAL
 CURB INLET
 L=10', W=3'
 INLET TOP=1309.84
 SEE SH. NO. 70



STA. 10+15.4, SWS LINE 39
 ST. STA. 21+37.57, 32.83' LT.
 INSTALL TYPE 1A SPECIAL
 CURB INLET
 L=10', W=3'
 INLET TOP=1309.84
 SEE SH. NO. 70

STA. 10+00.0, SWS LINE 38=
 STA. 10+00.0, SWS LINE 39=
 STA. 136+47.3, SWS LINE 2=
 ST. STA. 21+37.57, 17.42' LT.
 SEE SH. NO. 25



STREET IMPROVEMENTS FOR
17TH ST - BROADWAY TO I-135
 FROM BROADWAY TO I-135

©2019
 MKEC Engineering
 All Rights Reserved
 www.mkec.com
 These drawings and their contents, including, but not limited to, all concepts, designs, & fees are the exclusive property of MKEC Engineering (MKEC), and may not be used or reproduced in any way without the express consent of MKEC.

STORM SEWER
 PLAN & PROFILE
 LINE 36, 37, 38, & 39

PROJECT NO.	87 N-0662-01	
DATE	8/30/2019	
SCALE	1"=20'	
DESIGNED	JRA	
DRAWN	WNJ	
CHECKED	JRA	
NO.	REVISION	DATE
SHEET NO.		
37 OF 194		