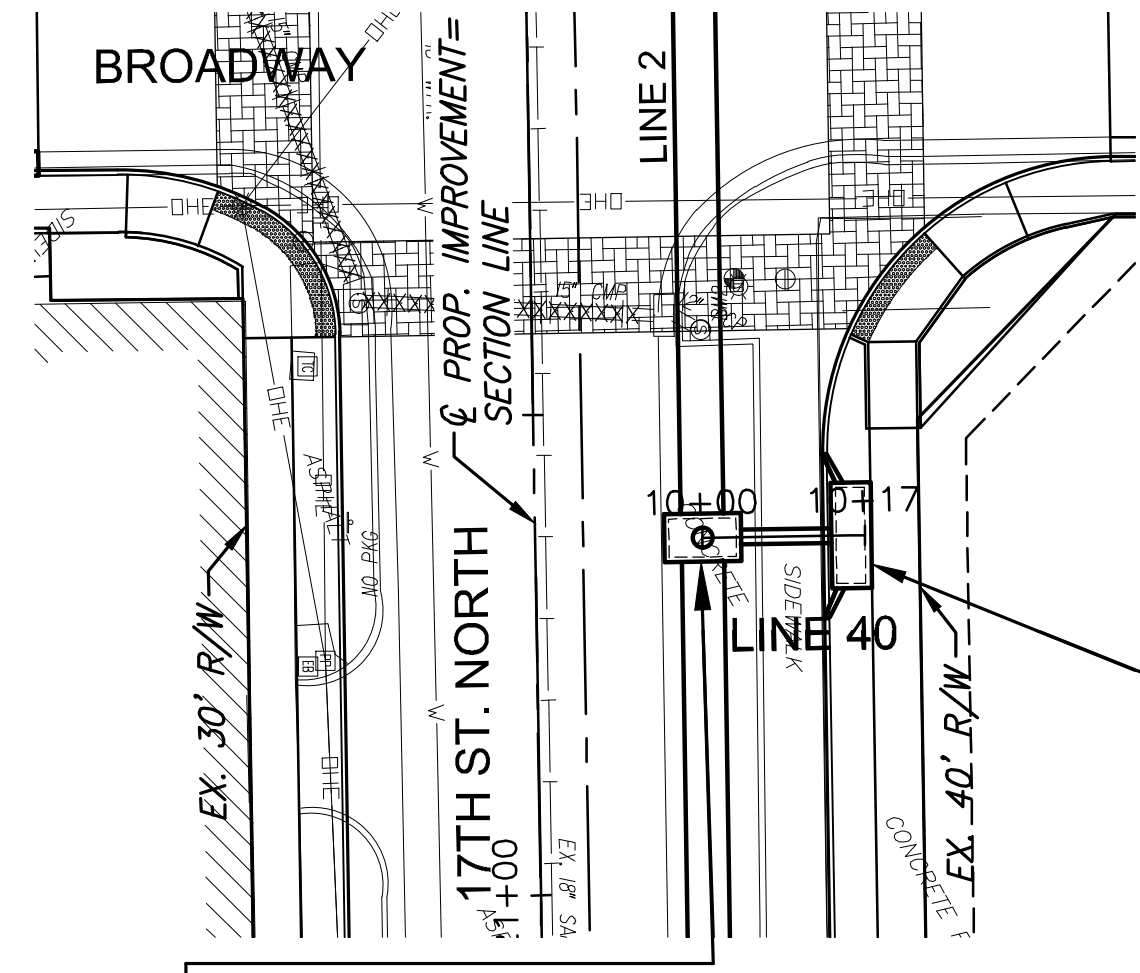


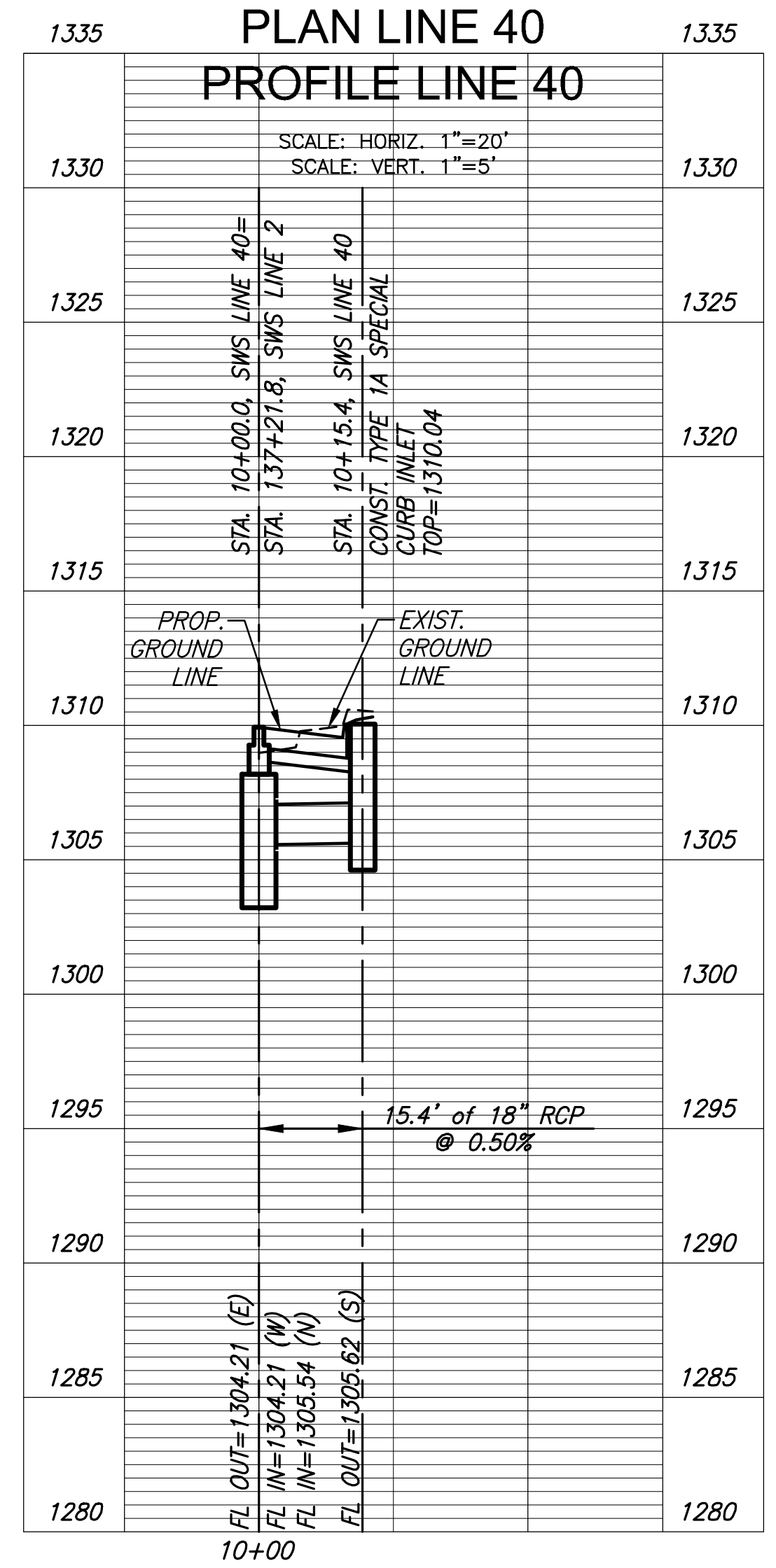
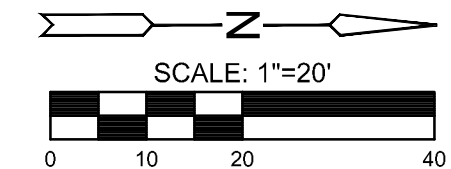
J:\CIVIL\1717\DWGS\SWS\041717_DP19.DWG
 PLOTTED: Tuesday, September 03, 2019 @ 12:29PM

STATE	PROJECT NO.	YEAR	SHEET NO.	TOTAL SHEETS
KANSAS	87 N-0662-01	2019	38	194

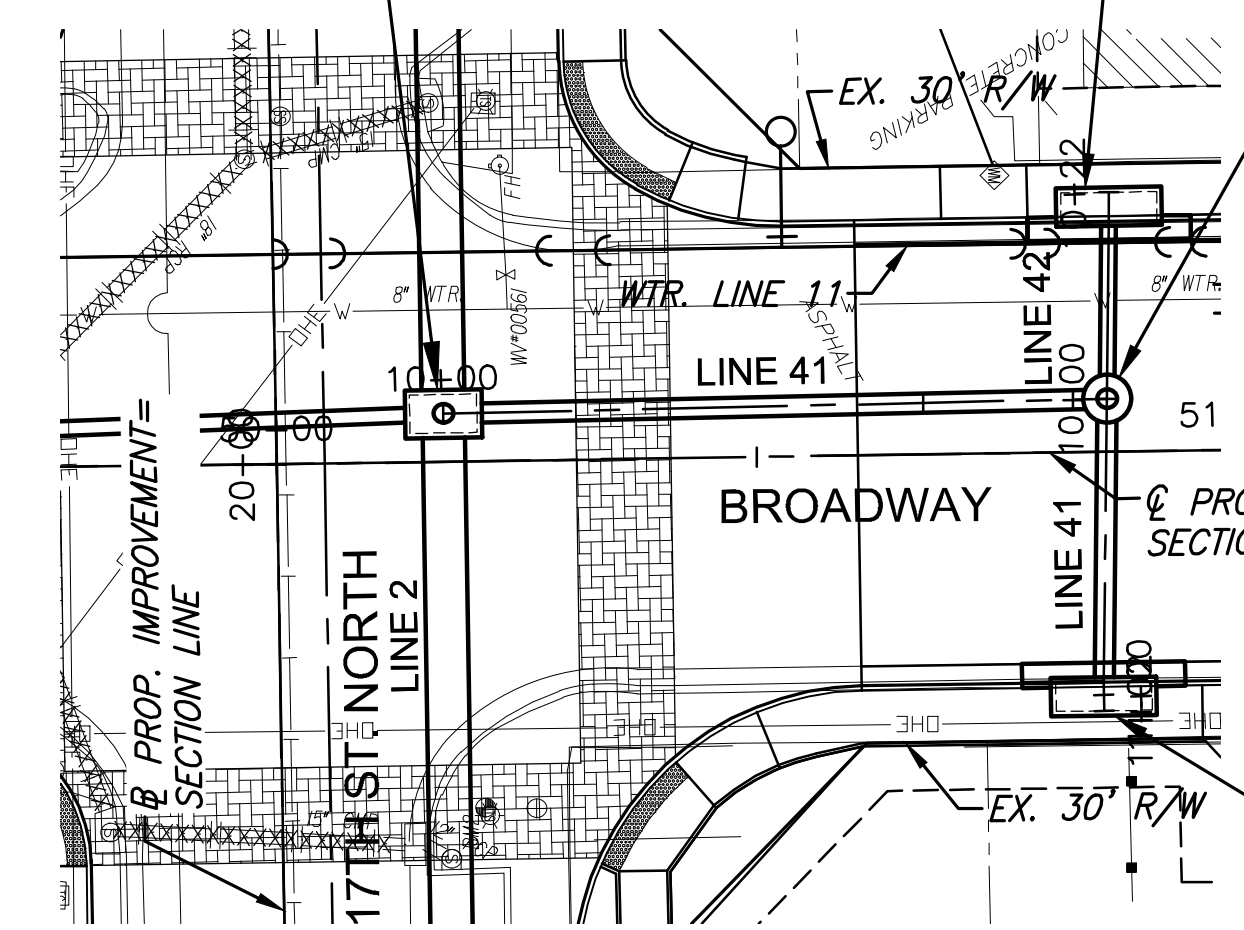


STA. 10+00.0, SWS LINE 40=
 STA. 137+21.8, SWS LINE 2=
 ST. STA. 20+63.04, 17.42' LT.
 SEE SH. NO. 25

40A
 STA. 10+15.4, SWS LINE 40
 ST. STA. 20+63.04, 32.83' LT.
 INSTALL TYPE 1A SPECIAL
 CURB INLET
 L=10', W=3'
 INLET TOP=1310.0
 SEE SH. NO. 70



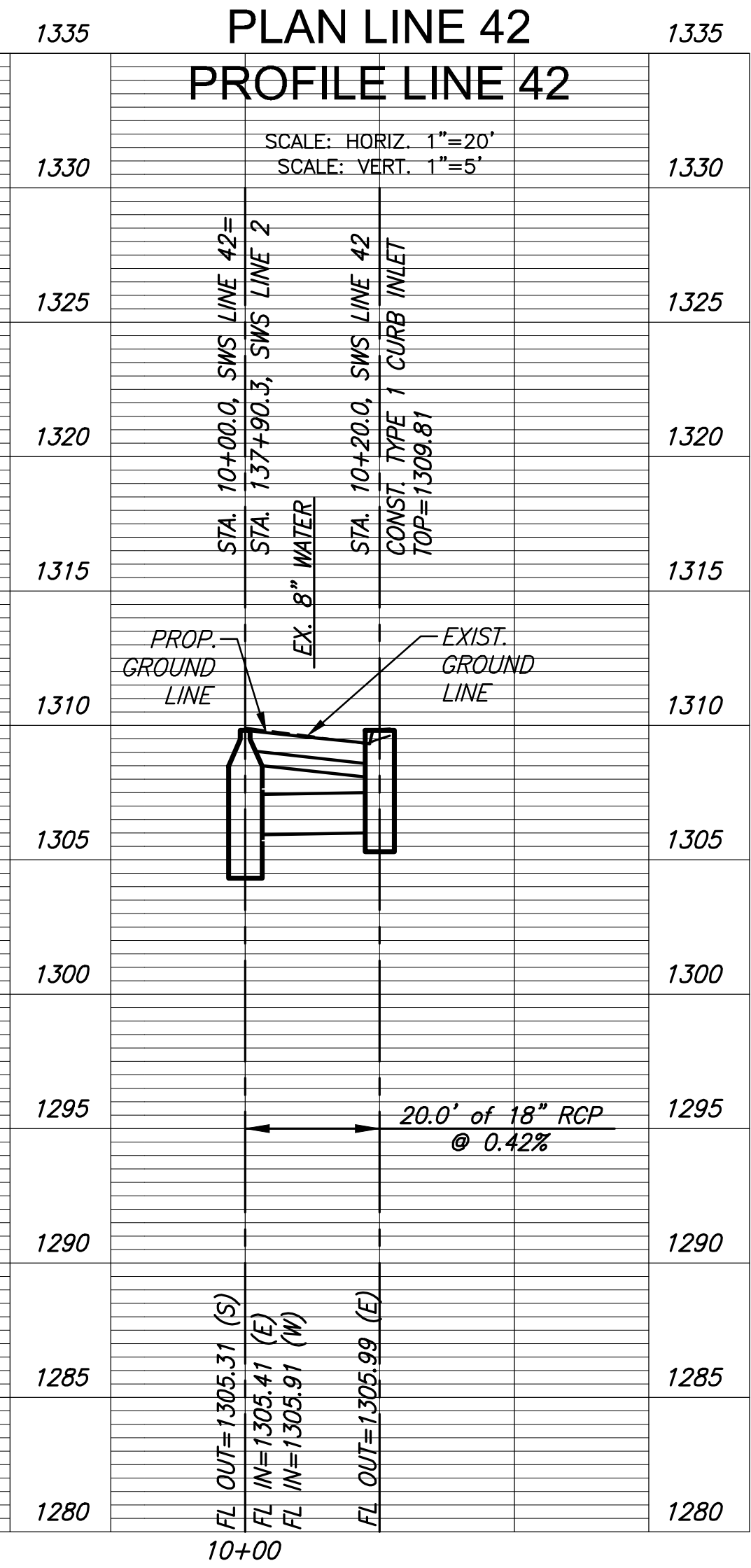
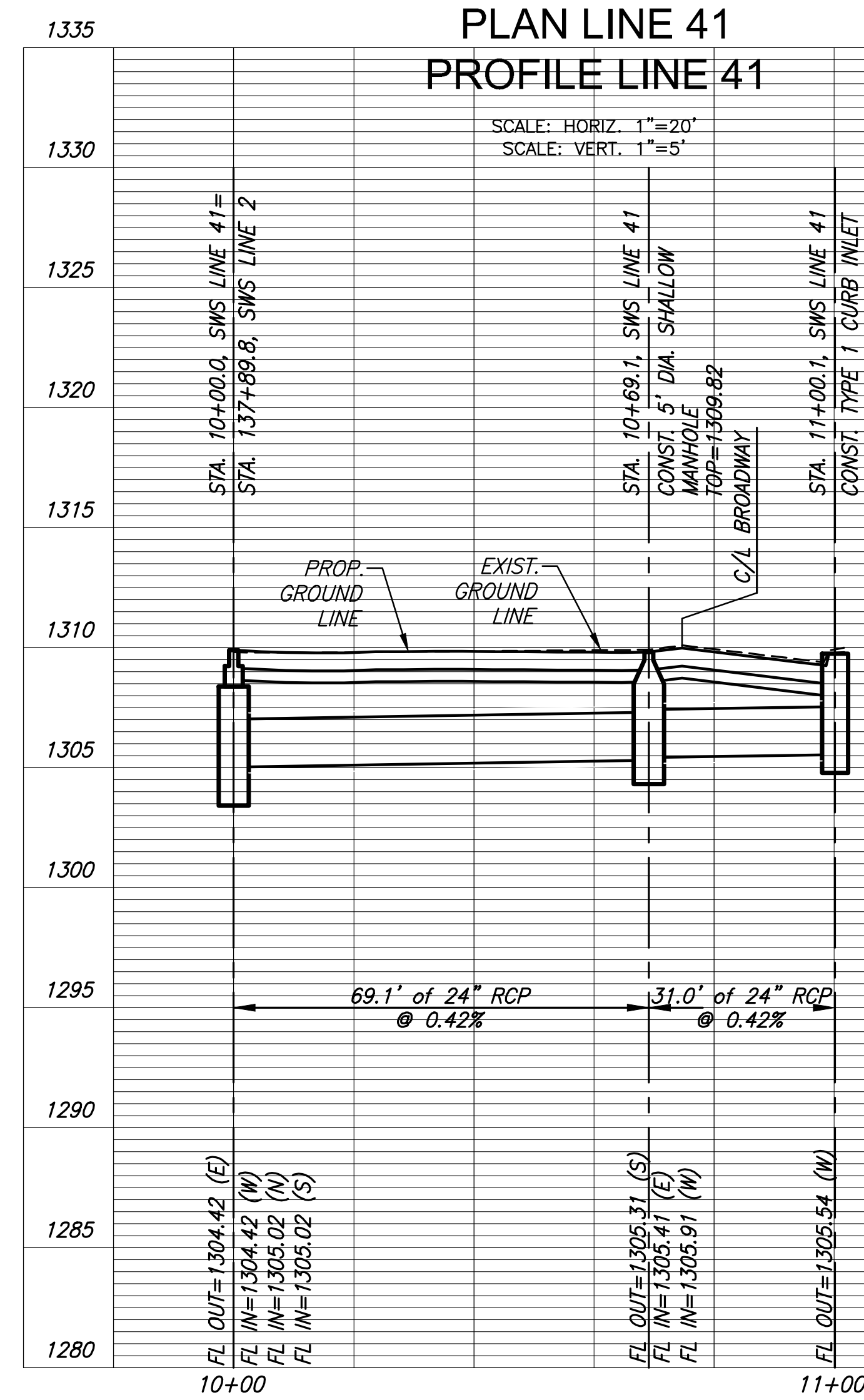
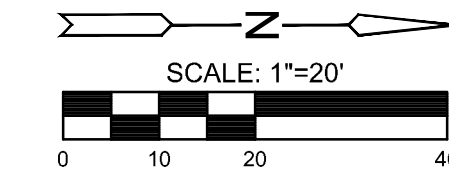
STA. 10+00.0, SWS LINE 41=
 STA. 137+89.8, SWS LINE 2=
 ST. STA. 19+95.06, 17.43' LT.
 SEE SH. NO. 25



42A
 STA. 10+20.0, SWS LINE 42
 ST. STA. 19+74.81, 87.14' LT.
 INSTALL TYPE 1 CURB INLET
 L=10', W=3'
 INLET TOP=1309.8
 SEE SH. NO. 68

41A
 STA. 10+69.13, SWS LINE 41=
 STA. 10+00.00, SWS LINE 42=
 ST. STA. 19+94.80, 86.57' LT.
 INSTALL 5' DIA. SHALLOW
 MANHOLE
 MH TOP=1309.8
 SEE SH. NO. 79

41B
 STA. 11+00.1, SWS LINE 41
 ST. STA. 20+25.56, 85.75' LT.
 INSTALL TYPE 1 CURB INLET
 L=10', W=3'
 INLET TOP=1309.7
 SEE SH. NO. 68



STREET IMPROVEMENTS FOR
17TH ST - BROADWAY TO I-135
 FROM BROADWAY TO I-135

©2019
 MKEC Engineering
 All Rights Reserved
 www.mkec.com
 These drawings and their contents, including, but not limited to, all concepts, designs, & ideas are the exclusive property of MKEC Engineering (MKEC), and may not be used or reproduced in any way without the express consent of MKEC.

**STORM SEWER
 PLAN & PROFILE
 LINE 40, 41, & 42**

PROJECT NO.	87 N-0662-01	
DATE	8/30/2019	
SCALE	1"=20'	
DESIGNED	JRA	
DRAWN	WNJ	
CHECKED	JRA	
NO.	REVISION	DATE
SHEET NO.		
38 OF 194		