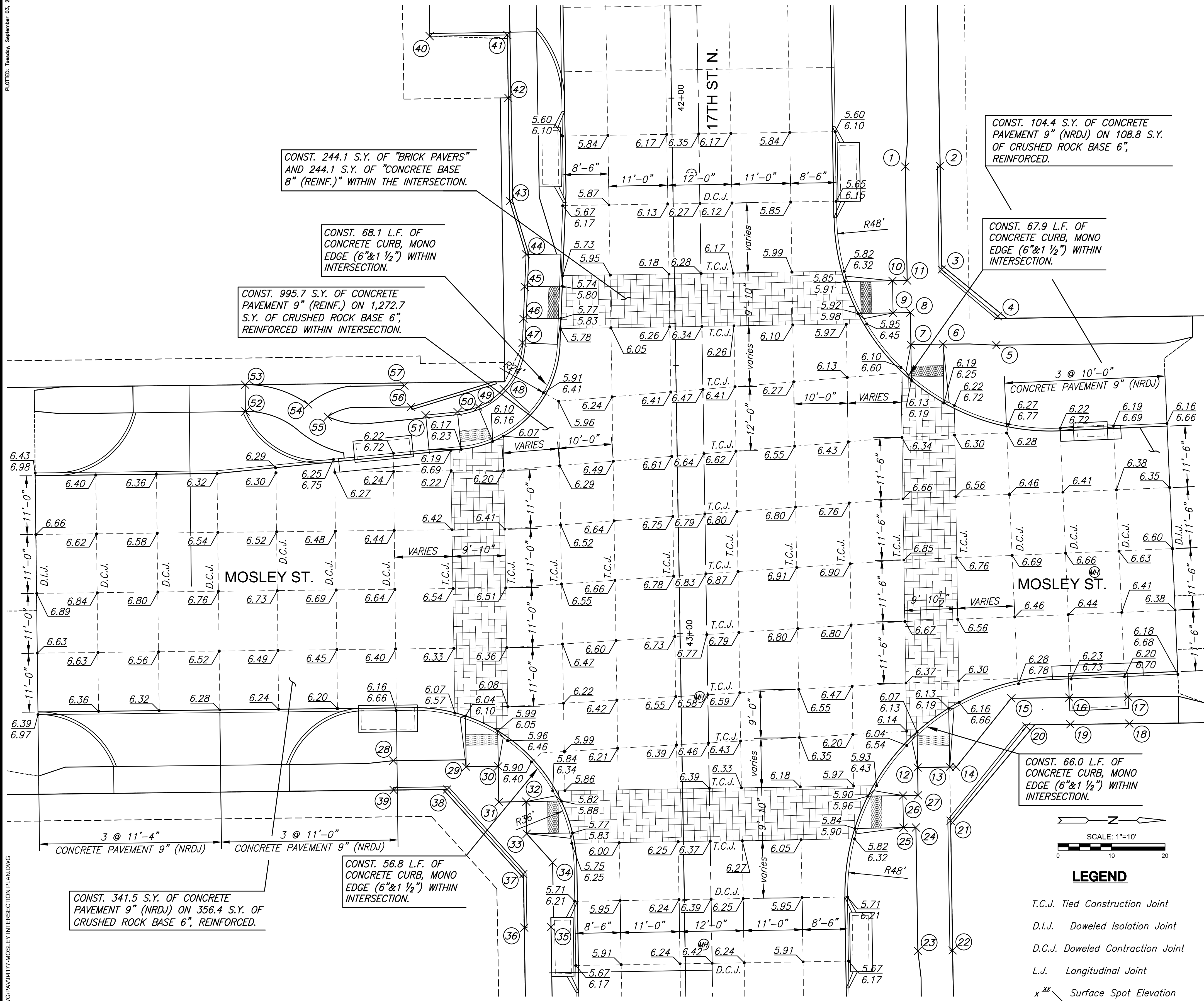


PLOTTED: Tuesday, September 03, 2019 @ 02:42PM
 J:\CIVIL\17\706\PAV\177\MOSLEY INTERSECTION PLANDWG

STATE	PROJECT NO.	YEAR	SHEET NO.	TOTAL SHEETS
KANSAS	87 N-0662-01	2019	49	194



INTERSECTION PLAN - 17TH & MOSLEY

SIDEWALK POINT TABLE					
PT. NO.	STATION, OFFSET	NORTHING	EASTING	ELEVATION	REMARKS
1	42+13.51, 43.50' Lt.	1696557.83	1651554.10	1307.31	NW Quad. at Walk
2	42+13.51, 50.00' Lt.	1696564.33	1651553.99	1307.43/1307.43	NW Quad. FL/BC
3	42+32.85, 50.00' Lt.	1696564.64	1651573.33	1306.59/1307.09	NW Quad. FL/BC
4	42+41.75, 60.35' Lt.	1696575.12	1651582.07	1307.01/1307.01	NW Quad. FL/BC
5	42+47.13, 59.98' Lt.	1696574.84	1651587.45	1306.91	NW Quad. at Walk
6	42+46.79, 50.00' Lt.	1696564.86	1651587.27	1306.24	NW Quad. at Walk
7	42+46.79, 44.00' Lt.	1696558.86	1651587.37	1306.64	NW Quad. at Walk
8	42+40.79, 44.00' Lt.	1696558.76	1651581.37	1306.54	NW Quad. at Walk
9	42+40.79, 40.76' Lt.	1696555.53	1651581.42	1306.48	NW Quad. at Walk
10	42+34.79, 40.76' Lt.	1696555.43	1651575.42	1306.43	NW Quad. at Walk
11	42+34.79, 43.50' Lt.	1696558.17	1651575.38	1306.49	NW Quad. at Walk
12	43+30.99, 41.17' Lt.	1696560.13	1651666.36	1306.60	NE Quad. at Walk
13	43+25.79, 44.00' Lt.	1696566.13	1651666.26	1306.70	NE Quad. at Walk
14	43+25.79, 50.00' Lt.	1696567.34	1651666.24	1306.72	NE Quad. at Walk
15	43+13.14, 61.73' Lt.	1696577.65	1651653.42	1306.93	NE Quad. at Walk
16	43+13.18, 72.55' Lt.	1696588.47	1651653.29	1306.98	NE Quad. at Walk
17	43+13.32, 83.55' Lt.	1696599.48	1651653.16	1307.01	NE Quad. at Walk
18	43+18.23, 83.68' Lt.	1696599.69	1651658.16	1307.11	NE Quad. at Walk
19	43+18.19, 72.68' Lt.	1696588.68	1651658.29	1307.08	NE Quad. at Walk
20	43+18.47, 64.45' Lt.	1696580.46	1651658.71	1307.03/1307.03	NE Quad. FL/BC
21	43+35.84, 50.00' Lt.	1696566.29	1651676.31	1306.72/1307.40	NE Quad. FL/BC
22	43+60.06, 50.00' Lt.	1696566.68	1651700.52	1307.87/1307.87	NE Quad. FL/BC
23	43+60.06, 43.50' Lt.	1696560.18	1651700.63	1307.77	NE Quad. at Walk
24	43+36.99, 43.50' Lt.	1696559.81	1651677.57	1306.60	NE Quad. at Walk
25	43+36.99, 41.17' Lt.	1696557.48	1651677.60	1306.56	NE Quad. at Walk
26	43+30.99, 41.17' Lt.	1696557.39	1651671.60	1306.46	NE Quad. at Walk
27	43+30.99, 44.00' Lt.	1696560.22	1651671.56	1306.50	NE Quad. at Walk
28	43+22.93, 53.99' Rt.	1696462.10	1651665.08	1306.97	SE Quad. at Walk
29	43+24.29, 40.38' Rt.	1696475.74	1651666.22	1306.55	SE Quad. at Walk
30	43+24.29, 34.38' Rt.	1696481.74	1651666.12	1306.50	SE Quad. at Walk
31	43+30.99, 34.38' Rt.	1696481.85	1651672.82	1306.46	SE Quad. at Walk
32	43+30.99, 29.27' Rt.	1696486.95	1651672.74	1306.38	SE Quad. at Walk
33	43+36.99, 29.27' Rt.	1696487.05	1651678.74	1306.48	SE Quad. at Walk
34	43+42.46, 24.50' Rt.	1696491.91	1651684.13	1306.49	SE Quad. at Walk
35	43+54.52, 25.00' Rt.	1696491.60	1651696.19	1306.94	SE Quad. at Walk
36	43+54.52, 30.00' Rt.	1696486.60	1651696.27	1307.04/1307.04	SE Quad. FL/BC
37	43+44.52, 30.00' Rt.	1696486.44	1651686.27	1306.55/1307.05	SE Quad. FL/BC
38	43+28.48, 44.02' Rt.	1696472.17	1651670.46	1306.60/1307.06	SE Quad. FL/BC
39	43+28.43, 54.02' Rt.	1696462.17	1651670.58	1307.07/1307.07	SE Quad. FL/BC
40	41+87.70, 45.00' Rt.	1696468.92	1651529.72	1307.62/1307.62	SW Quad. FL/BC
41	41+87.70, 30.50' Rt.	1696483.42	1651529.48	1306.39/1307.06	SW Quad. FL/BC
42	41+99.46, 30.50' Rt.	1696483.61	1651541.24	1306.59/1307.26	SW Quad. FL/BC
43	42+18.76, 30.50' Rt.	1696483.92	1651560.54	1306.56/1307.23	SW Quad. FL/BC
44	42+28.76, 27.65' Rt.	1696486.93	1651570.49	1306.33/1307.00	SW Quad. FL/BC
45	42+34.79, 27.98' Rt.	1696486.69	1651576.53	1305.92/1306.59	SW Quad. FL/BC
46	42+40.79, 28.32' Rt.	1696486.46	1651582.53	1305.95/1306.62	SW Quad. FL/BC
47	42+45.29, 28.57' Rt.	1696486.28	1651587.03	1306.44/1307.11	SW Quad. FL/BC
48	42+53.83, 32.25' Rt.	1696482.73	1651595.63	1306.61/1307.28	SW Quad. FL/BC
49	42+57.07, 37.04' Rt.	1696478.00	1651598.95	1306.28/1306.95	SW Quad. FL/BC
50	42+57.99, 40.93' Rt.	1696474.12	1651599.93	1306.35/1307.02	SW Quad. FL/BC
51	42+58.49, 46.91' Rt.	1696468.15	1651600.52	1306.83/1306.83	SW Quad. FL/BC
52	42+57.27, 80.56' Rt.	1696434.48	1651599.85	1306.97	SW Quad. at Walk
53	42+52.27, 80.54' Rt.	1696434.42	1651594.85	1307.07	SW Quad. at Walk
54	42+56.15, 68.79' Rt.	1696446.24	1651598.54	1307.03	SW Quad. at Walk
55	42+58.49, 65.19' Rt.	1696449.87	1651600.82	1306.95	SW Quad. at Walk
56	42+56.91, 49.59' Rt.	1696465.45	1651598.99	1307.07	SW Quad. at Walk
57	42+52.91, 50.78' Rt.	1696464.19	1651595.01	1307.15	SW Quad. at Walk

STREET IMPROVEMENTS FOR
17TH ST - BROADWAY TO I-135
 FROM BROADWAY TO I-135

©2019 MKEC Engineering
 All Rights Reserved
 www.mkec.com
 These drawings and their contents, including, but not limited to, all concepts, designs, & fees are the exclusive property of MKEC Engineering (MKEC), and may not be used or reproduced in any way without the express consent of MKEC.

INTERSECTION PLAN - 17TH & MOSLEY
 PROJECT NO. 87 N-0662-01
 DATE 8/30/2019
 SCALE 1"=10'
 DESIGNED DRAWN CHECKED
 JRA RAM JRA

NO.	REVISION	DATE

SHEET NO. 49 OF 194