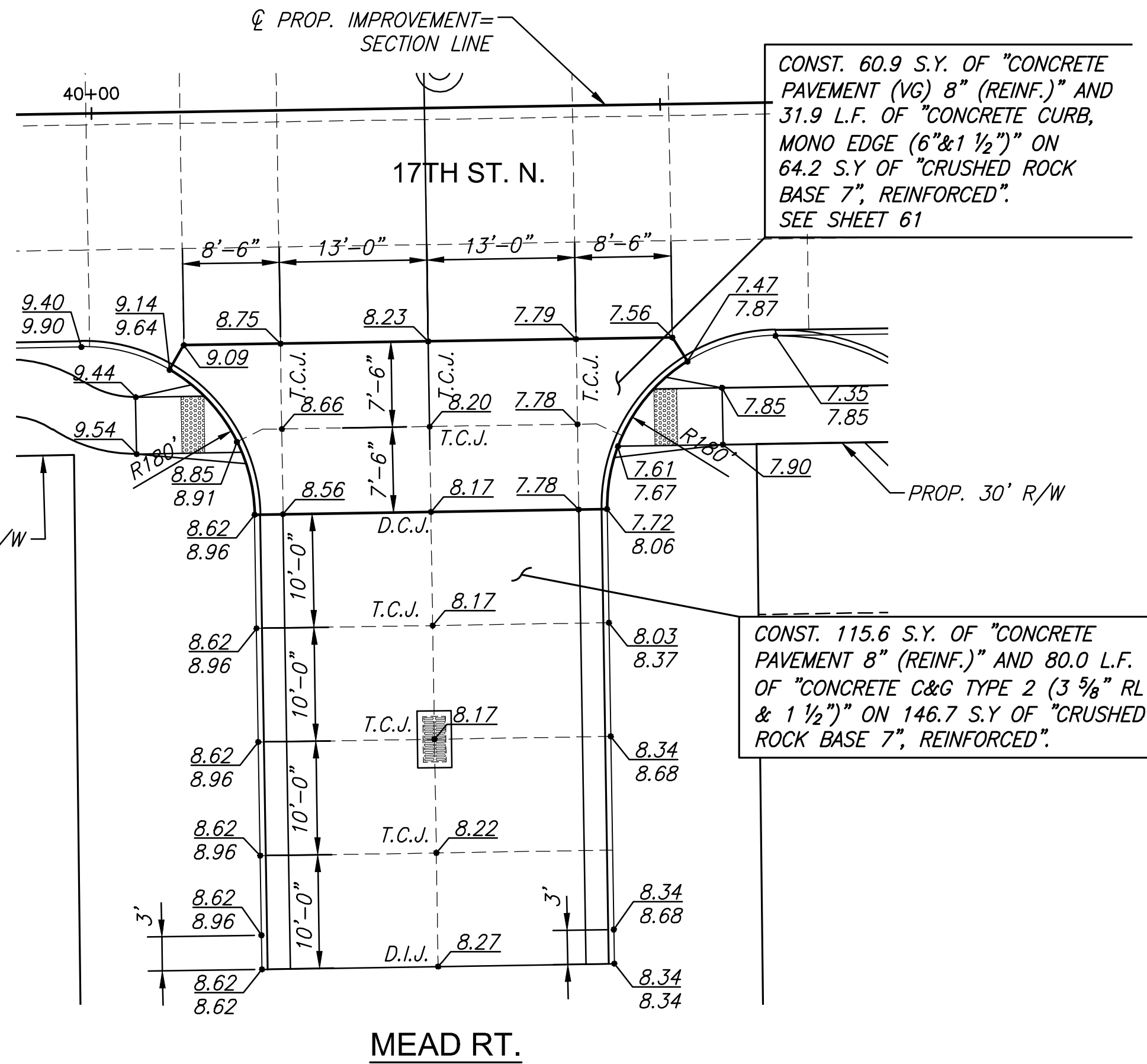
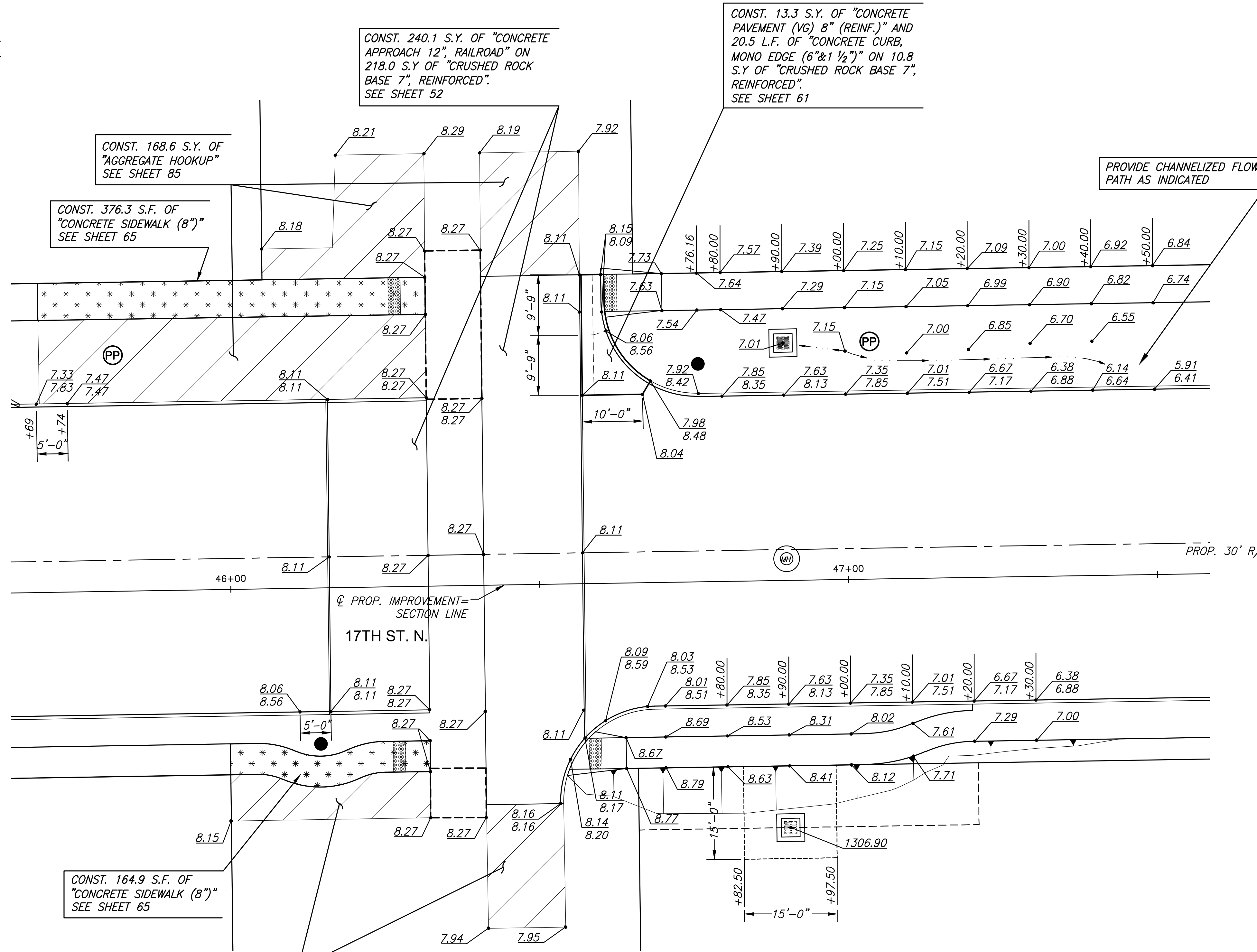


STATE	PROJECT NO.	YEAR	SHEET NO.	TOTAL SHEETS
KANSAS	87 N-0662-01	2019	55	194

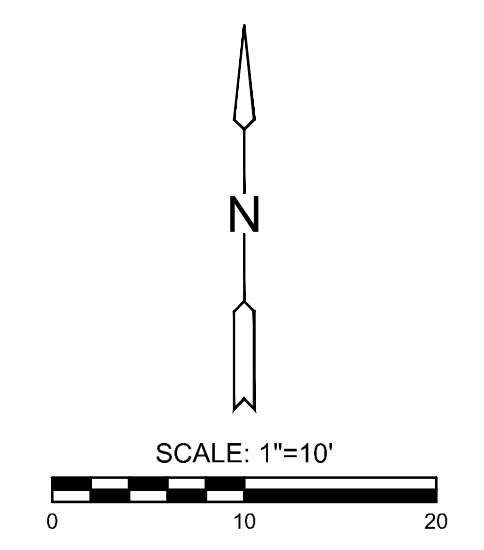


STREET IMPROVEMENTS FOR
17TH ST - BROADWAY TO I-135
FROM BROADWAY TO I-135

PLOTTED: Tuesday, September 03, 2019 @ 02:59PM
J:\CIVIL\177\DWG\PAV\177-EDR4.DWG



- LEGEND**
- T.C.J. Tied Construction Joint
 - D.I.J. Doweled Isolation Joint
 - D.C.J. Doweled Contraction Joint
 - L.J. Longitudinal Joint
 - x^{ss} Surface Spot Elevation
 - Direction of Surface Flow
 - Curb Height Transition
 - Ⓜ MH Lid



©2019 MKEC Engineering All Rights Reserved
www.mkec.com
These drawings and their contents, including, but not limited to, all concepts, designs, & ideas are the exclusive property of MKEC Engineering (MKEC), and may not be used or reproduced in any way without the express consent of MKEC.

VALLEY GUTTER & RAILROAD APPROACH PLANS

PROJECT NO.	87 N-0662-01	
DATE	8/30/2019	
SCALE	1"=10'	
DESIGNED	JRA	
DRAWN	RAM	
CHECKED	JRA	
NO.	REVISION	DATE
SHEET NO.		
55 OF 194		