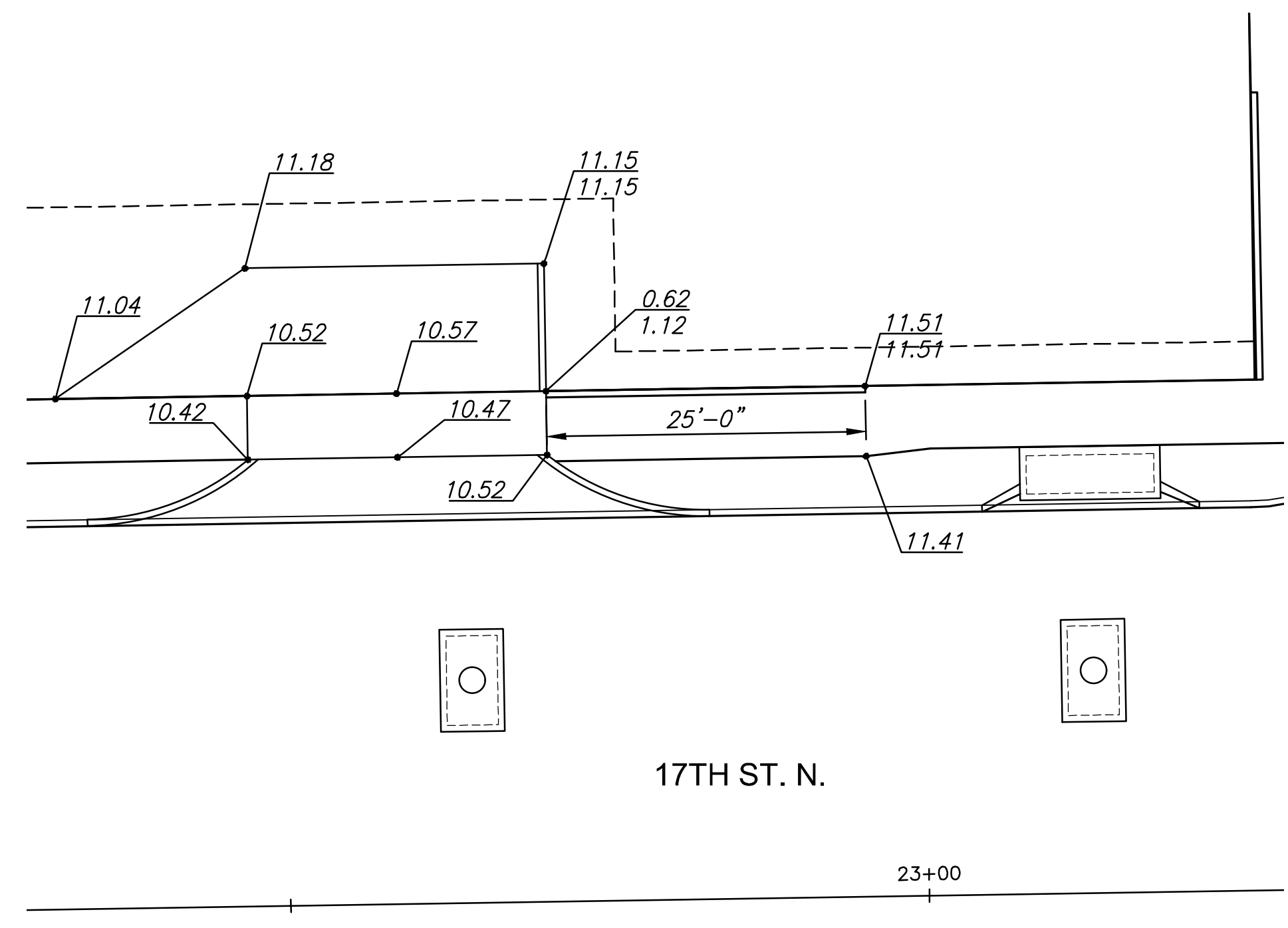


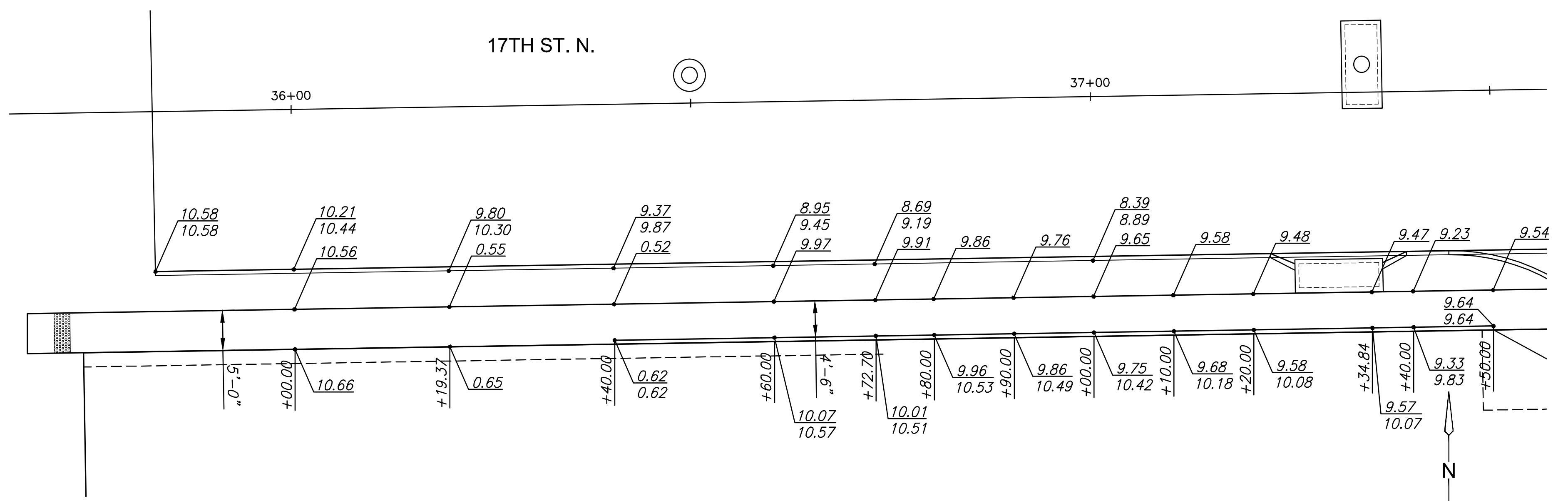
| | | | | |
|--------|--------------|------|-----------|--------------|
| STATE | PROJECT NO. | YEAR | SHEET NO. | TOTAL SHEETS |
| KANSAS | 87 N-0662-01 | 2019 | 57 | 194 |



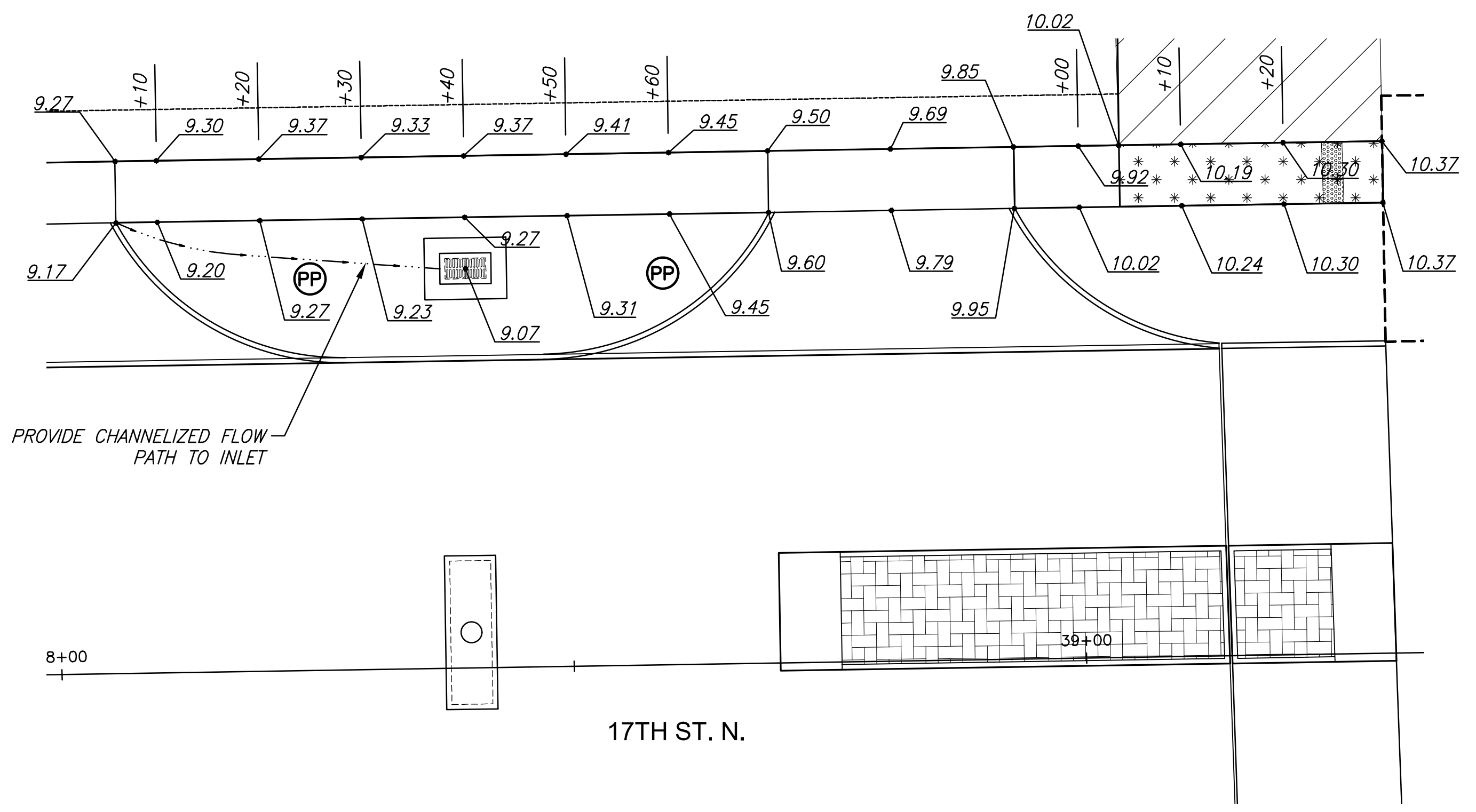
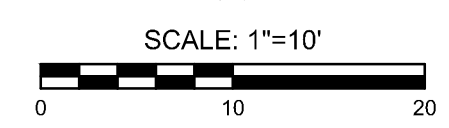
STREET IMPROVEMENTS FOR
17TH ST - BROADWAY TO I-135
 FROM BROADWAY TO I-135



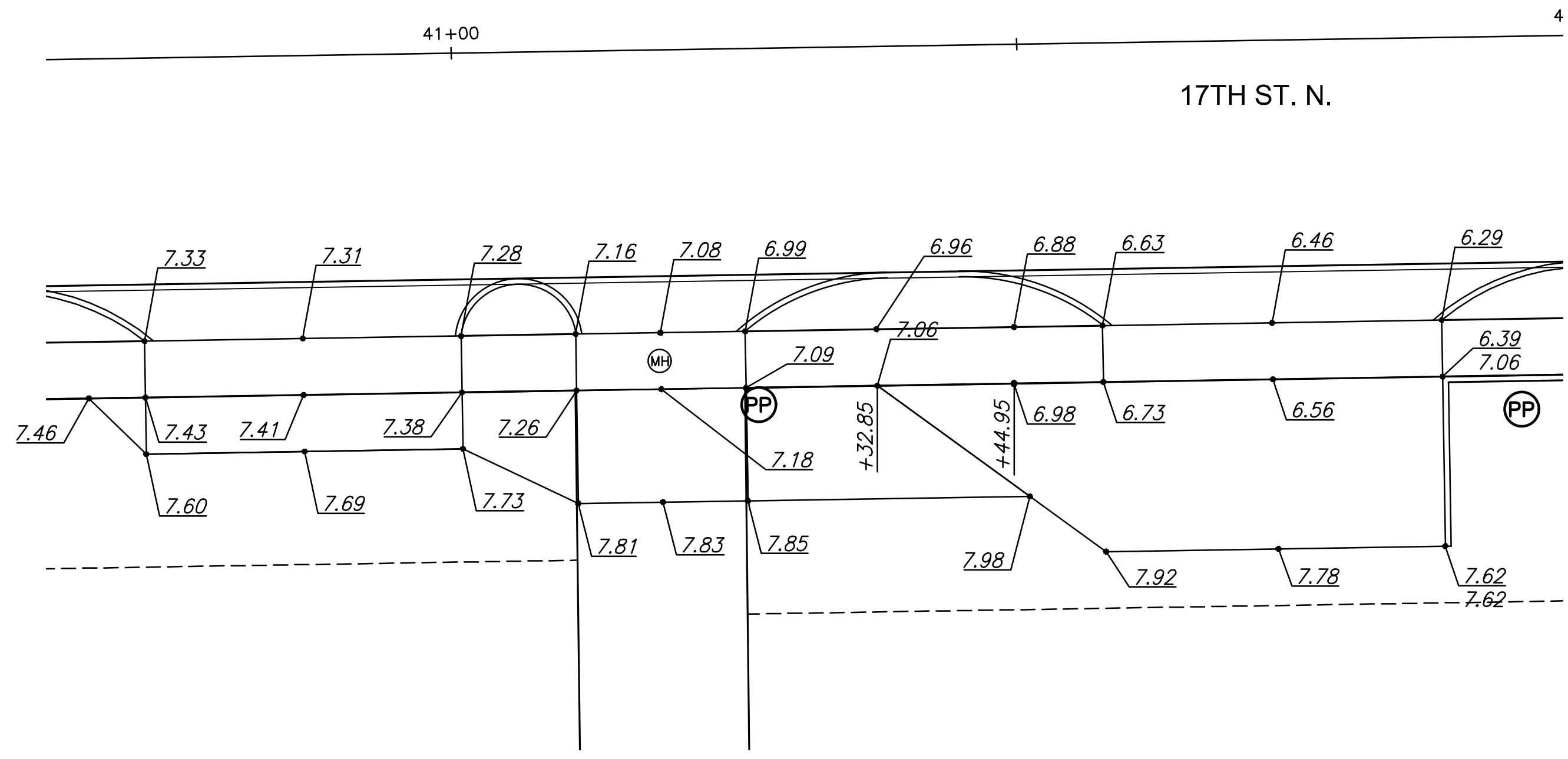
① **DRIVEWAY AND SIDEWALK PLAN**
 (STA. 22+40 TO STA. 23+25)



② **SIDEWALK PLAN**
 (STA. 35+80 TO STA. 37+50)



③ **SIDEWALK AND GRADING PLAN**
 (STA. 38+00 TO STA. 39+00)



④ **DRIVEWAY AND SIDEWALK PLAN**
 (STA. 40+65 TO STA. 41+90)

©2019 MKEC Engineering All Rights Reserved www.mkec.com
 These drawings and their contents, including, but not limited to, all concepts, designs, & ideas are the exclusive property of MKEC Engineering (MKEC), and may not be used or reproduced in any way without the express consent of MKEC.

SPECIAL GRADING PLAN

| | | |
|-------------|--------------|---------|
| PROJECT NO. | 87 N-0662-01 | |
| DATE | 8/30/2019 | |
| SCALE | #"-#" | |
| DESIGNED | DRAWN | CHECKED |
| JRA | RAM | JRA |

| NO. | REVISION | DATE |
|-----|----------|------|
|-----|----------|------|

SHEET NO.

PLOTTED: Tuesday, September 03, 2019 @ 02:46PM
 J:\CIVIL\17\DWG\PAV\17-ED14.DWG