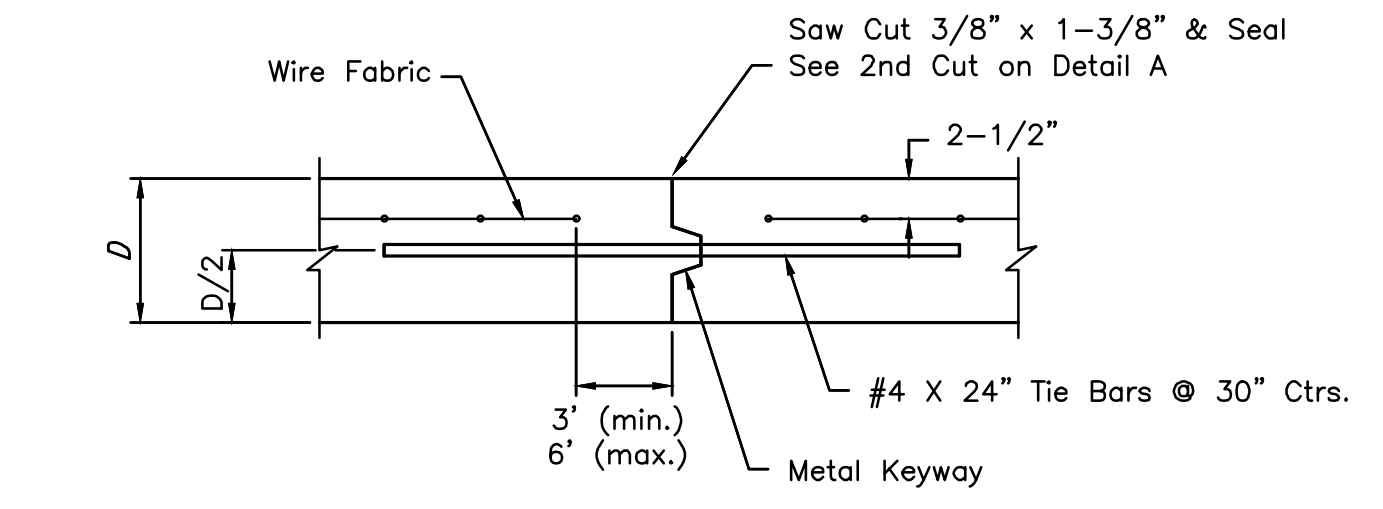
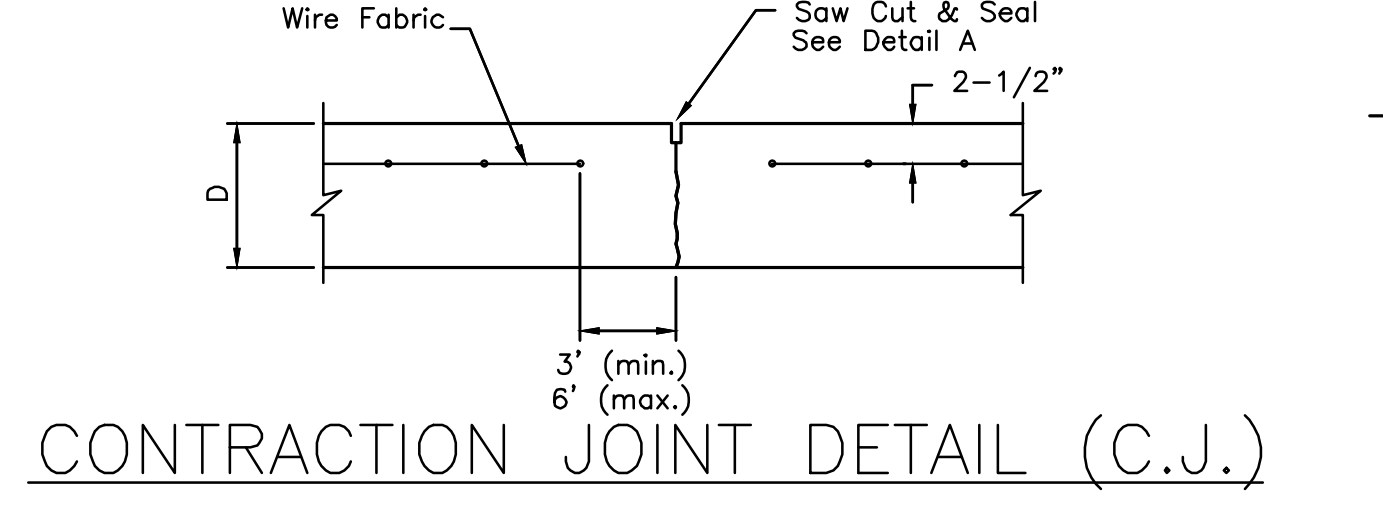


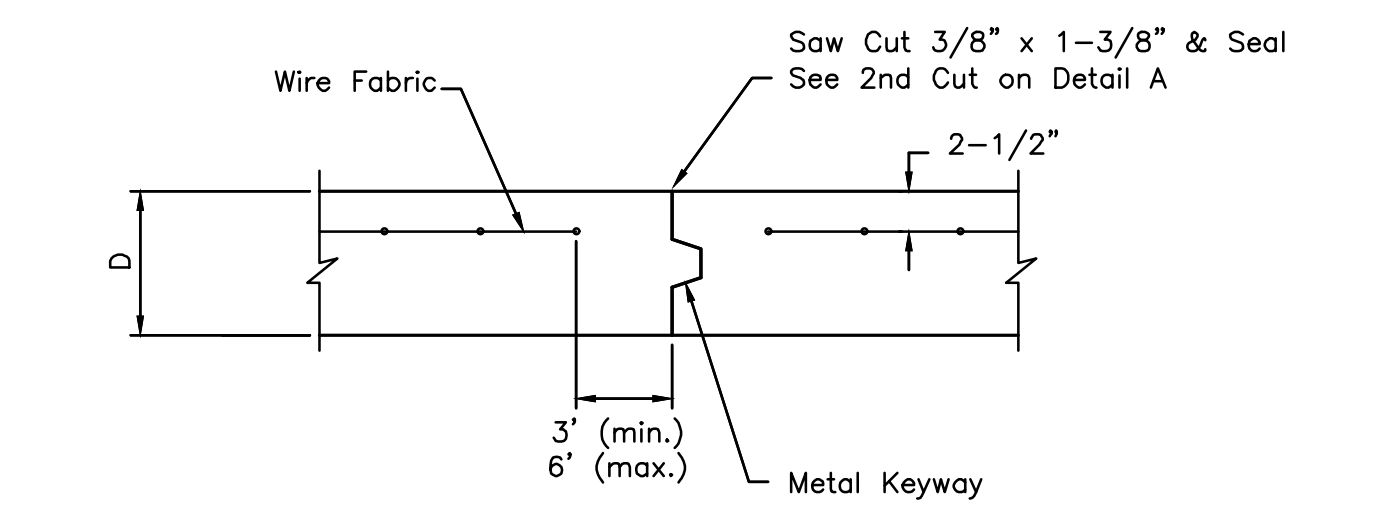
LONGITUDINAL JOINT DETAIL (L.J.)



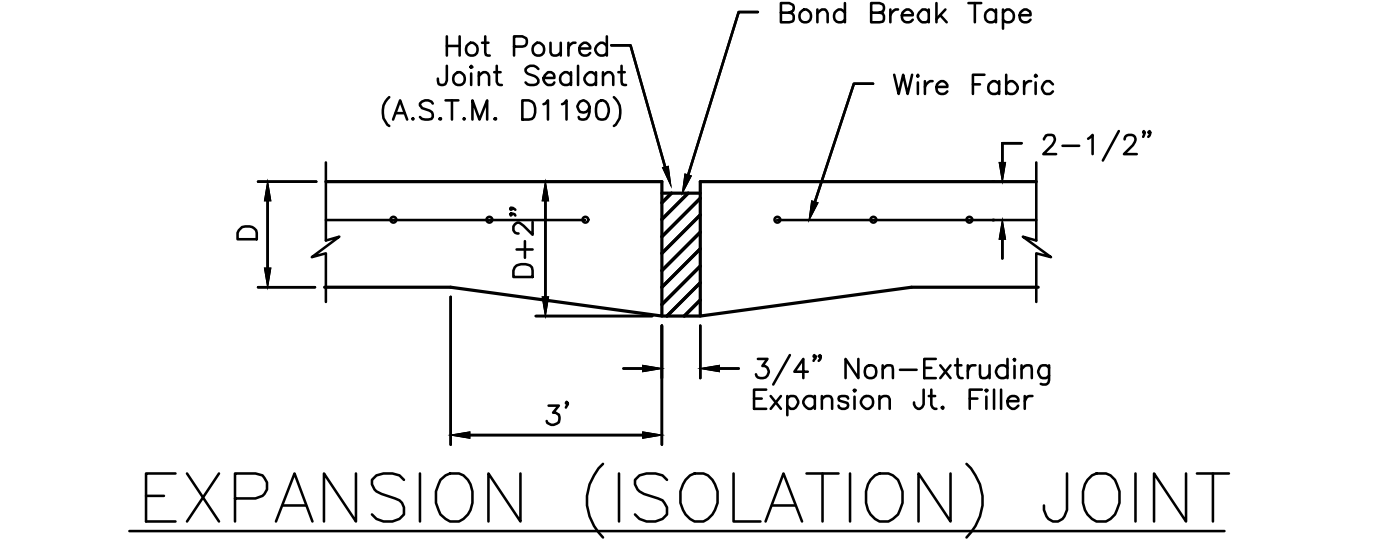
OPT. LONGITUDINAL JOINT DETAIL (L.J.)



CONTRACTION JOINT DETAIL (C.J.)

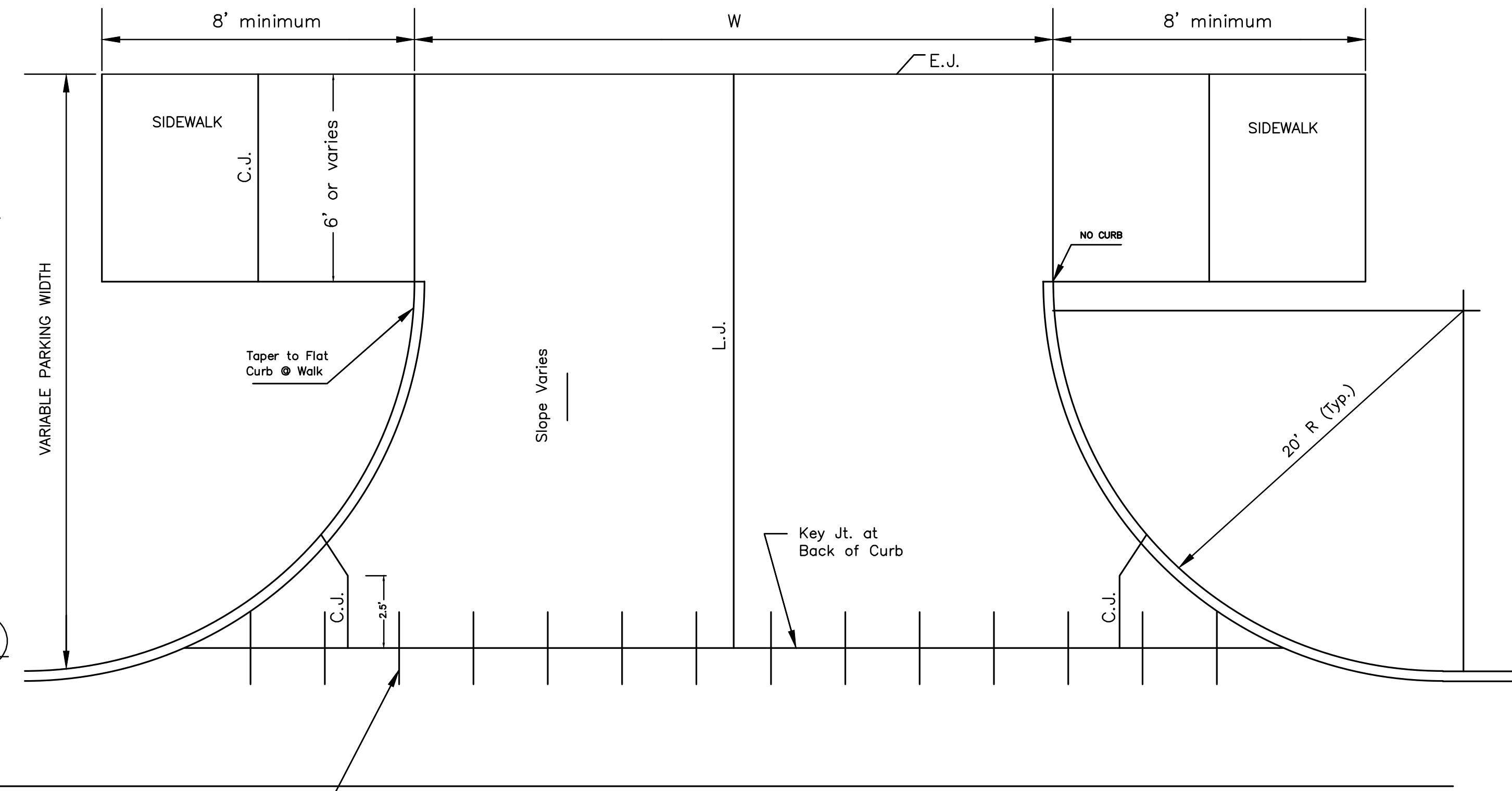


OPTIONAL CONTRACTION JOINT



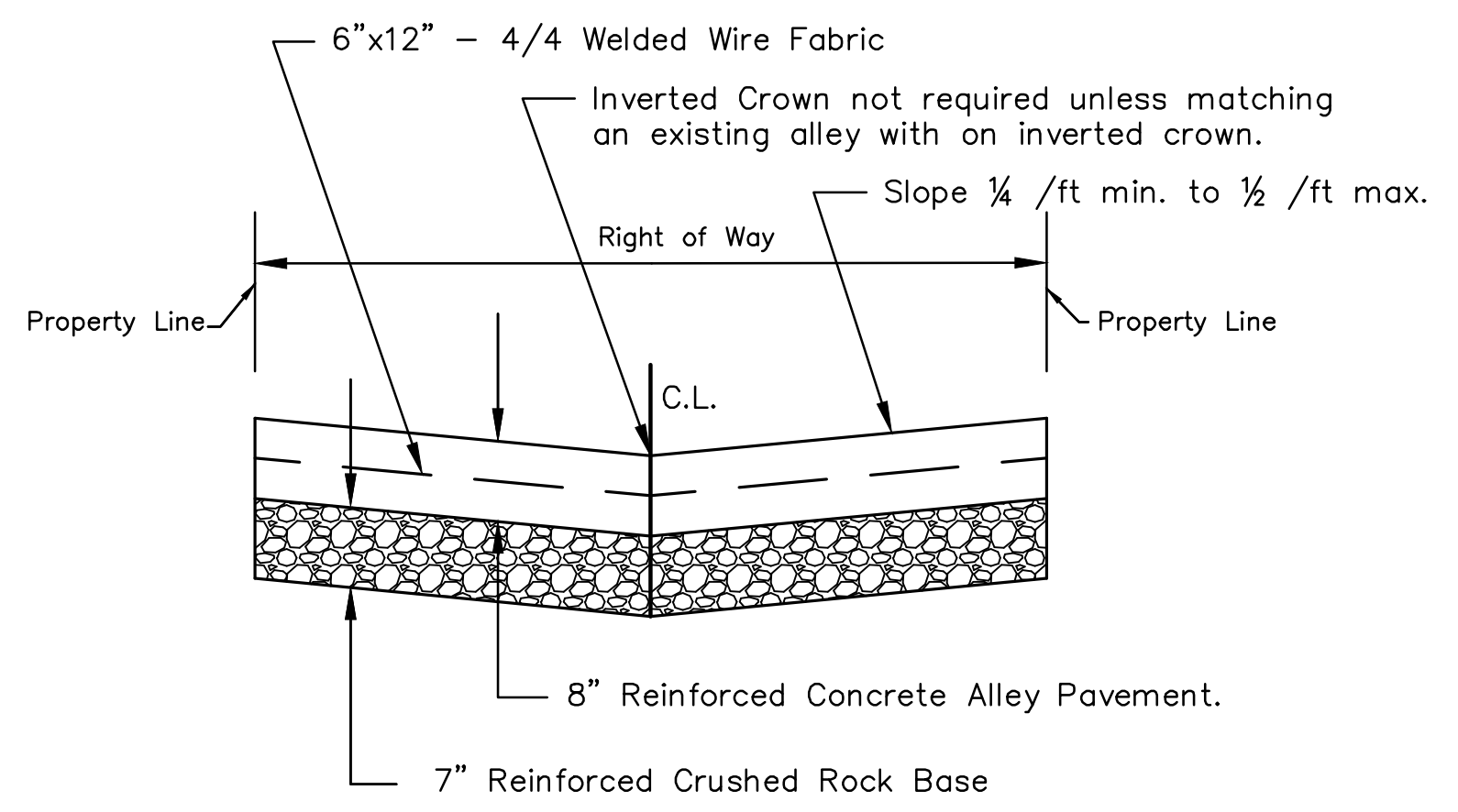
EXPANSION (ISOLATION) JOINT

NOTE: Extra Thickness to be Subsidiary to Price of Square Yards Pavement

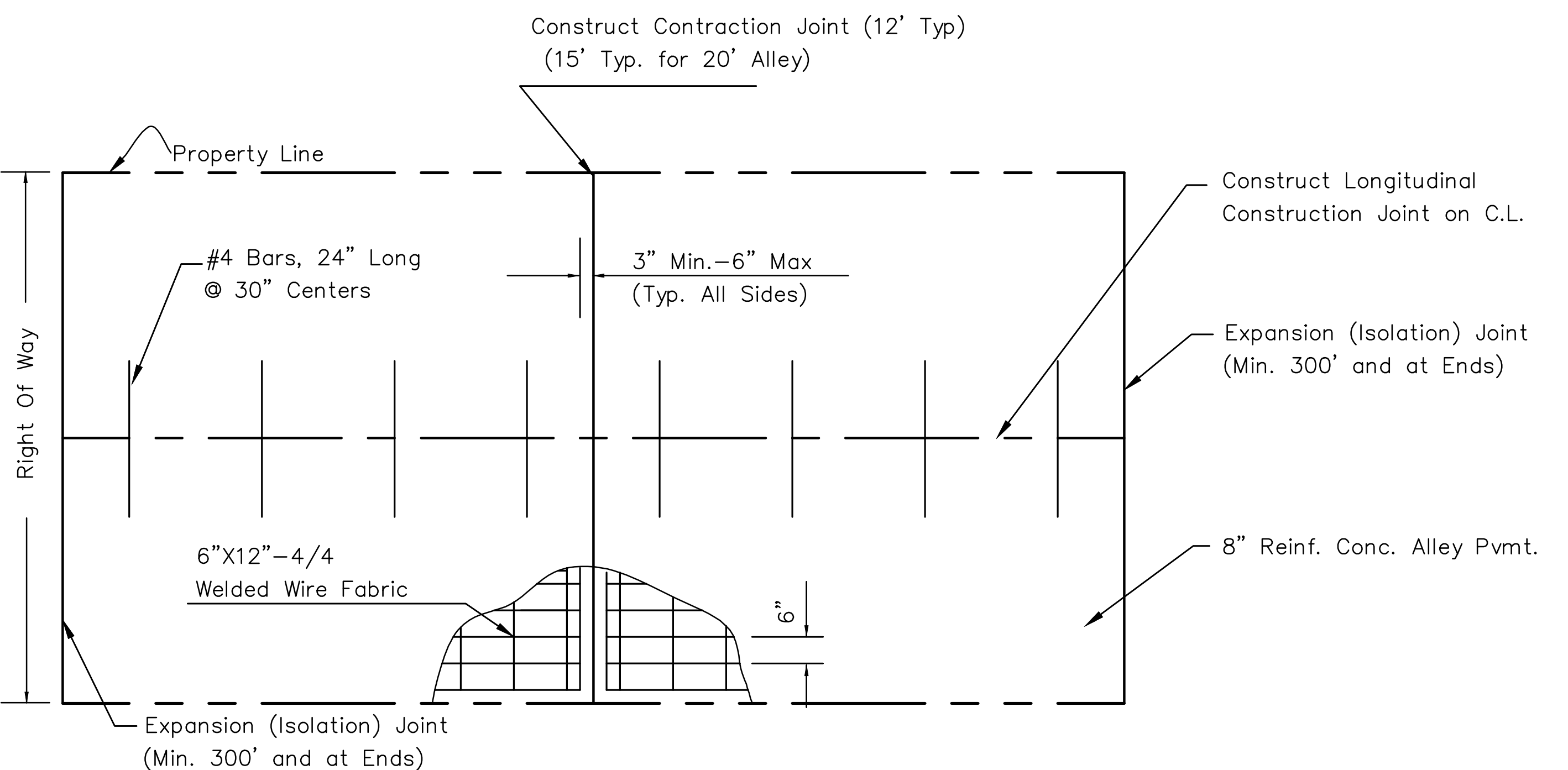


Use Ramp-Type Approach when distance between fc. wk. & bk. cb. is 8'-0" or less. Where parking width is 8'-0" or less ramp shall be constructed full width.

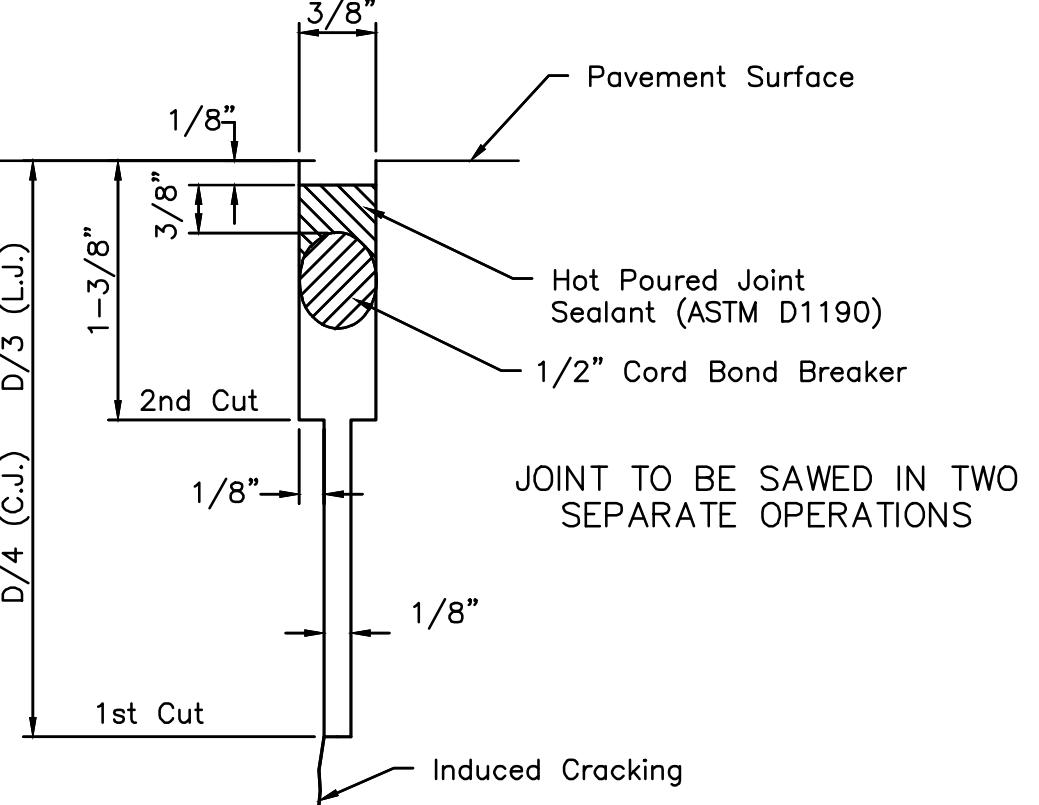
ALLEY APPROACH DETAIL



TYPICAL PAVEMENT SECTION

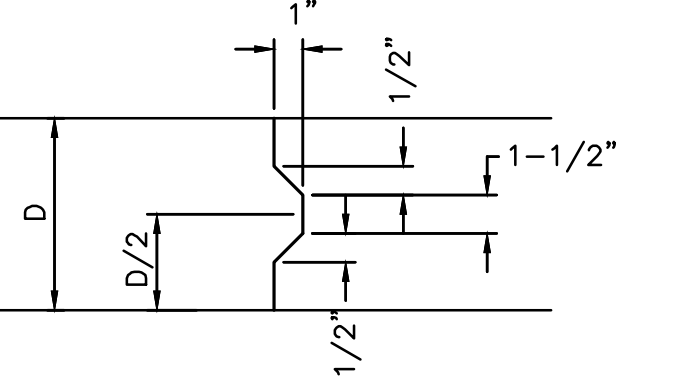


SLAB REINFORCEMENT DETAIL



SAW JOINT DETAIL

(Detail A)



KEYWAY DETAIL

Alley's and Alley Approach Pavement paid for as "Concrete Alley 8".



REVISED: NOVEMBER 2015		
REINFORCED CONCRETE ALLEY PAVING DETAIL		
CITY ENGINEER GARY JANZEN, P.E.		
PROJECT NUMBER 87N-0662-01	OCA NUMBER 706903	DATE 8/30/2019
CITY ENGINEER'S OFFICE CITY HALL - SEVENTH FLOOR 455 NORTH MAIN STREET WICHITA, KANSAS 67202-1620 (316) 268-4501		SHEET 63 OF 194