

STATE	PROJECT NO.	YEAR	SHEET NO.	TOTAL SHEETS
KANSAS	87 N-0662-01	2019	67	194



MEDIAN PAVER NOTES:

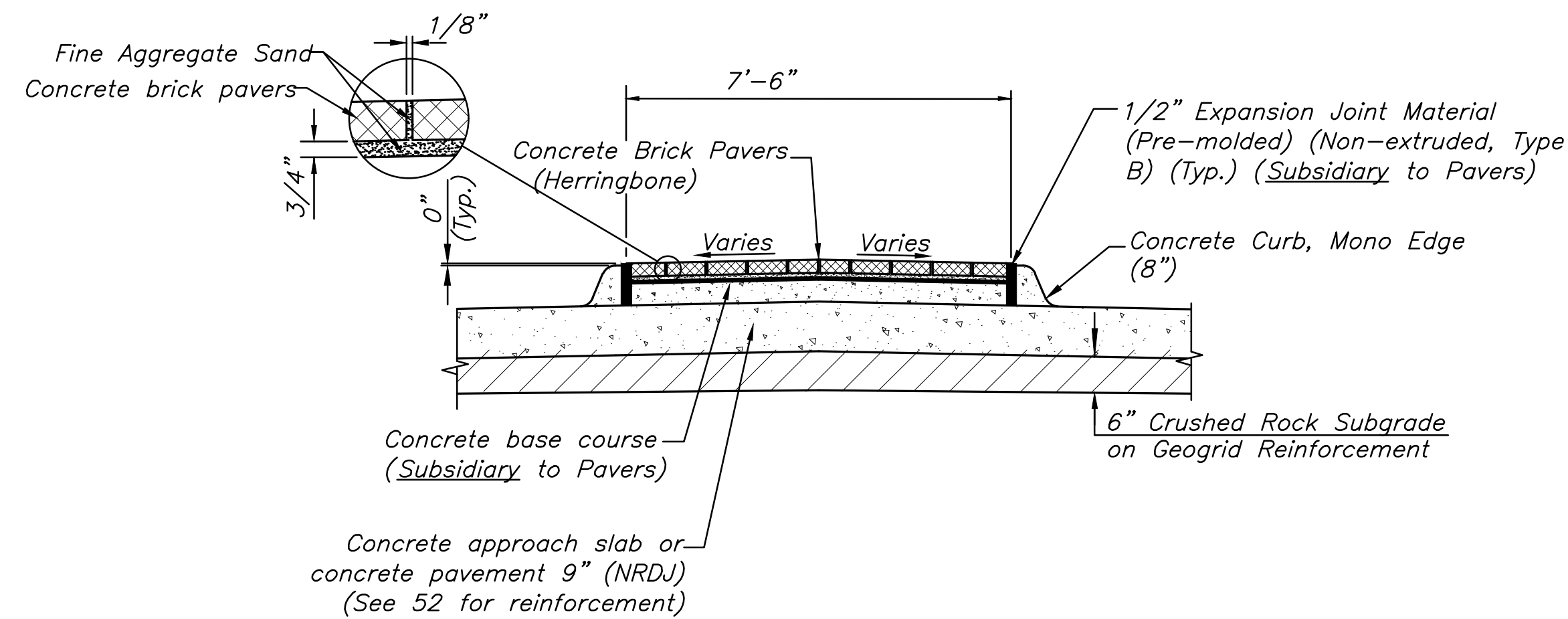
1. Concrete unit pavers shall meet or exceed ASTM C 936. The style shall be "Holland Stone" (4"x8"x3 1/8") as manufactured by Pavestone, Inc., or equal as approved by the engineer. Color shall be "charcoal red" and laying pattern shall be herringbone. Payment shall be at the contract bid price per square foot for concrete unit pavers.

2. Sand bedding shall meet the specification requirements for fine aggregate. An uncompacted sand laying course shall be spread evenly over the area to be paved and then screeded to a level of approximately 3/4" max. thickness. Once screeded and leveled to the desired elevation, the sand laying course shall not be disturbed in any way.

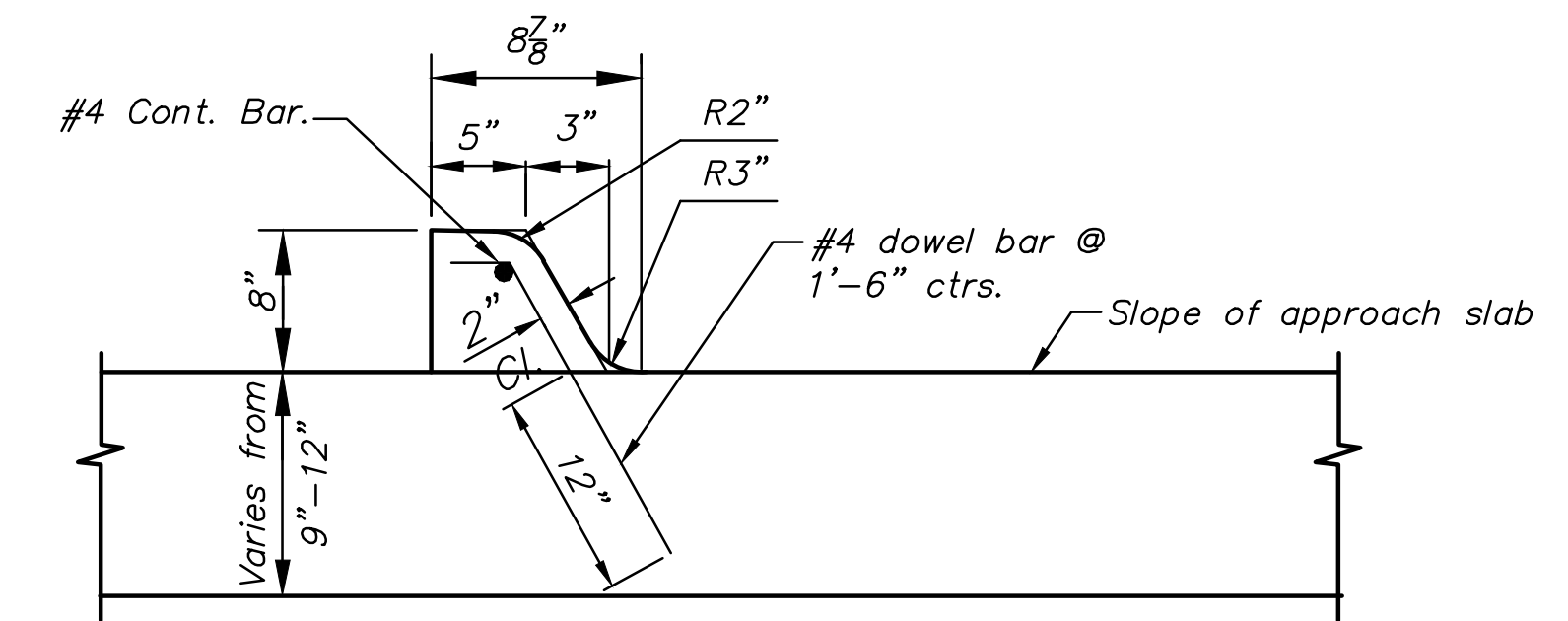
3. The paving brick shall be installed in a herringbone pattern as shown in the plan. Stones shall be placed with the chamfered side up, and joint spaces kept uniform approximately 1/8 inch thick. The gaps at the edge of the paved surface shall be filled with stones cut to fit. Cutting shall be accomplished to leave a clean edge toward the traffic surface, using a masonry saw. Whenever possible, no cuts should result with a paver less than one-third of its original dimension.

4. Paving brick shall be vibrated to their final level in the sand laying course by two or three passes of a vibrating compactor capable of 3000 to 5000 pounds compaction force with the surface clean and joints open.

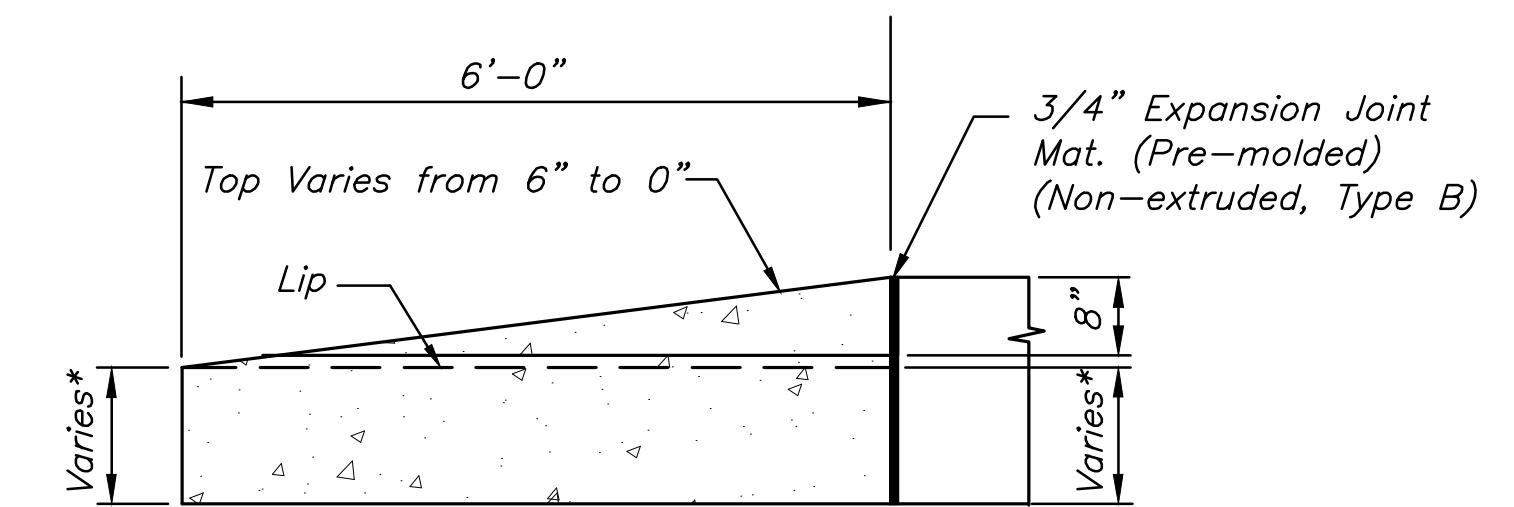
5. After vibration, clean concrete sand shall be spread over the paving stone surface, allowed to dry, and vibrated into the joints with additional passes of the plate vibrator so as to completely fill the joints. A light coating of sand shall be swept over the completed surface and left to weather in.



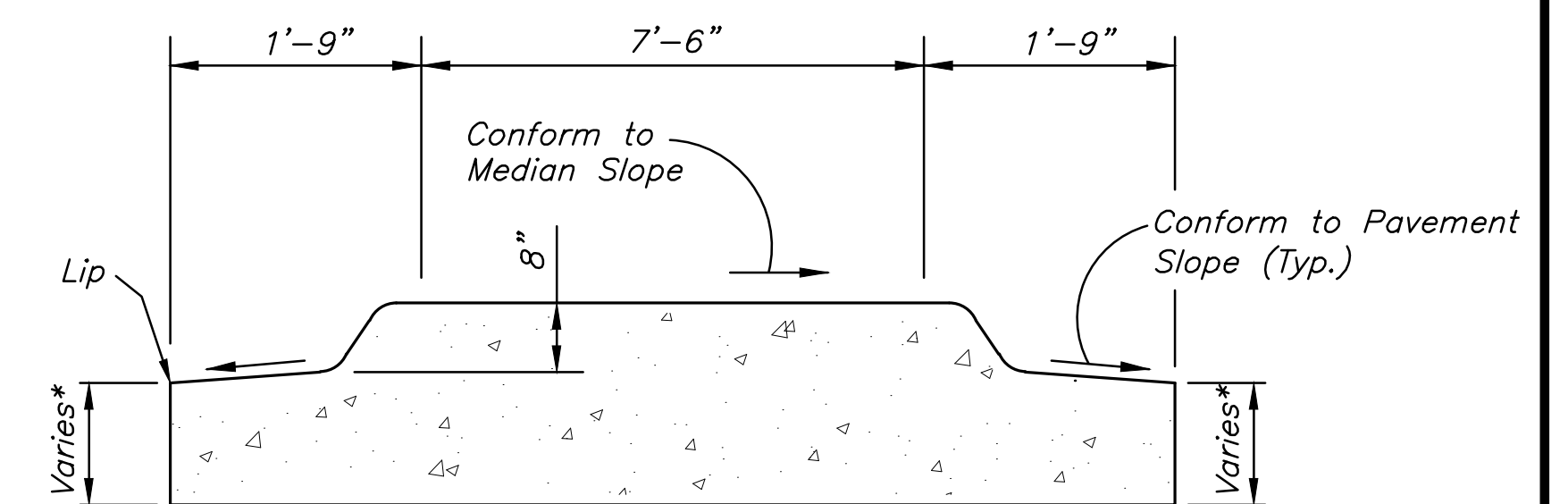
MEDIAN DETAIL AT CONCRETE APPROACH SLAB AND CONCRETE PAVEMENT



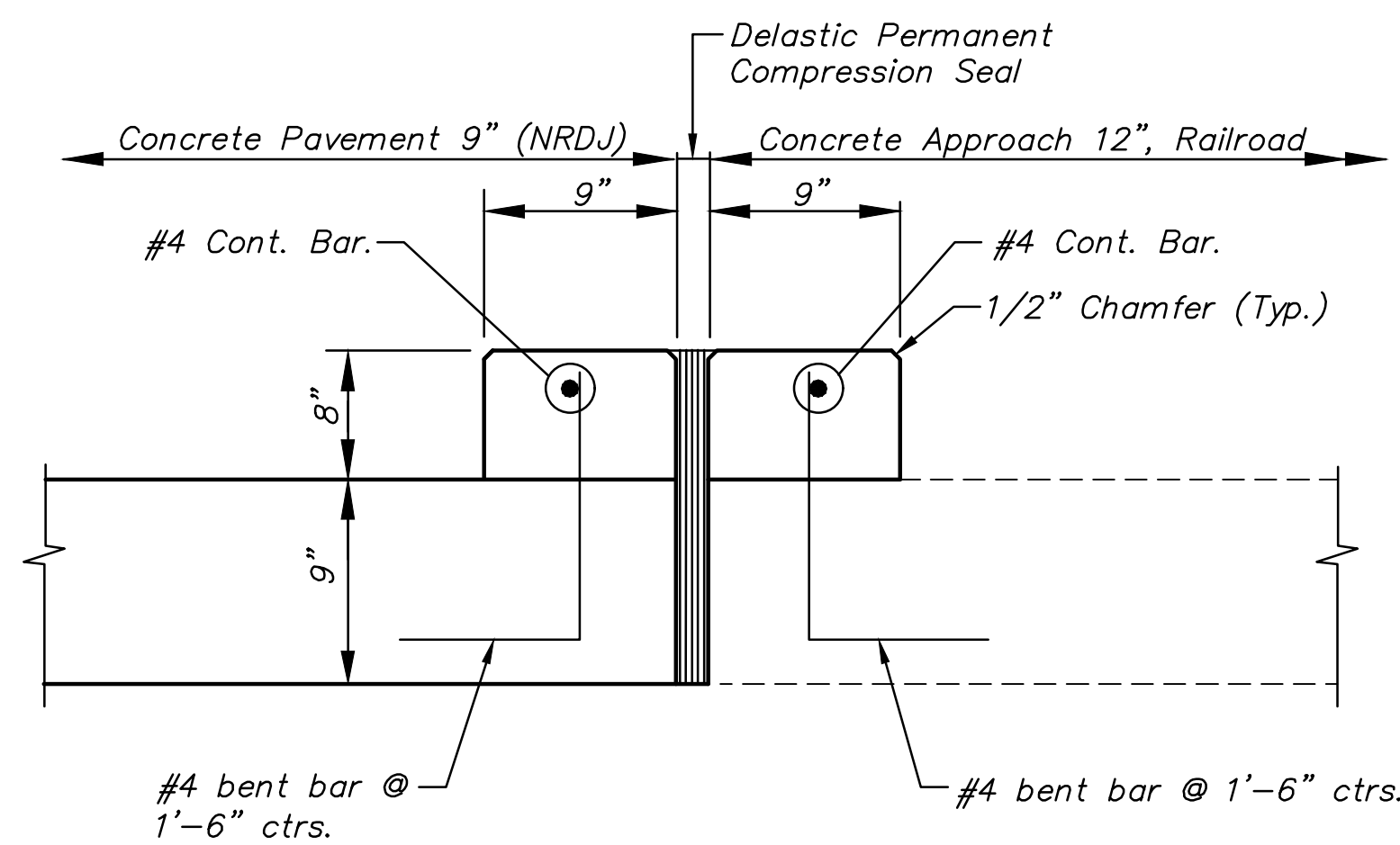
CONCRETE CURB, MONO EDGE (8") (Parallel With Traveled Way)



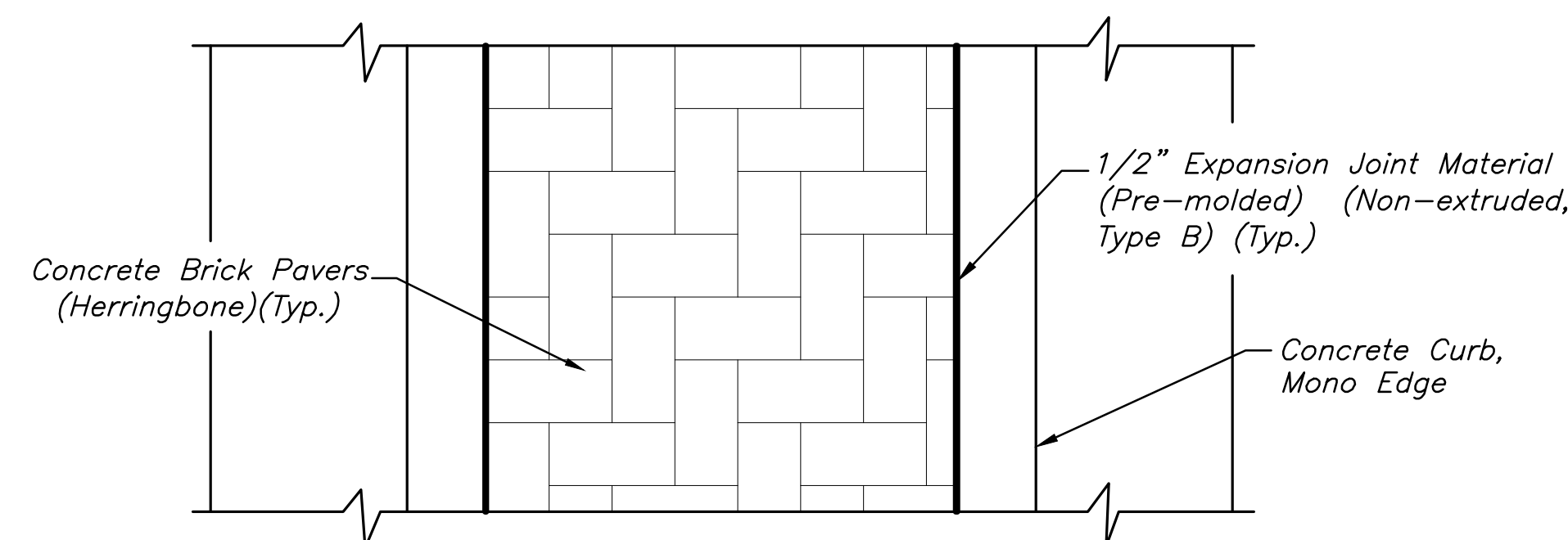
*Varies with thickness of Approach Pavement. Paid for as "12" Concrete Approach Railroad".



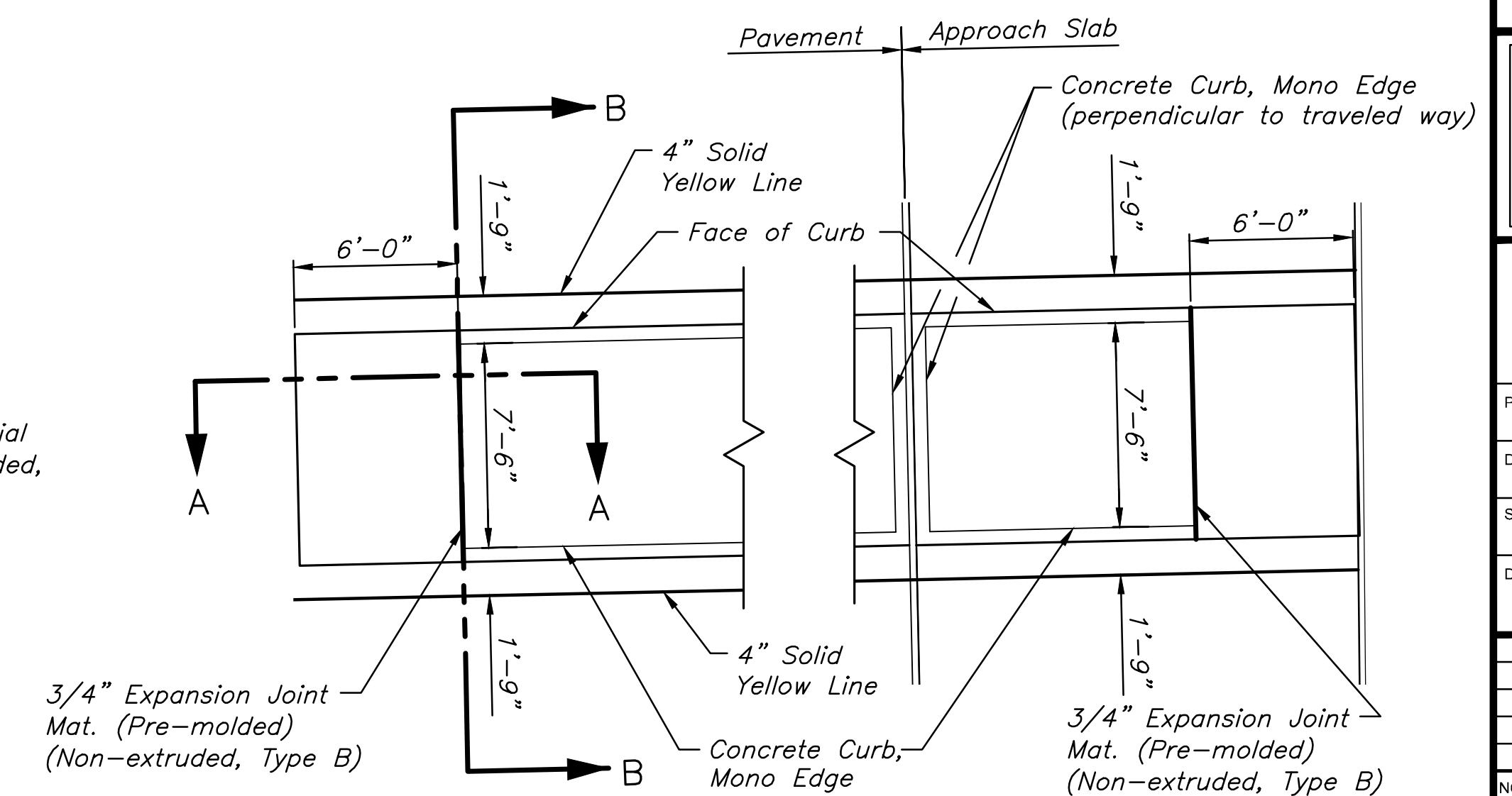
SECTION B-B



CONCRETE CURB, MONO EDGE (8") (Perpendicular To Traveled Way)



BRICK PAVER DETAILS



CONCRETE MEDIAN NOSE DETAILS

STREET IMPROVEMENTS FOR
17TH ST - BROADWAY TO I-135
FROM BROADWAY TO I-135

©2019 MKEC Engineering All Rights Reserved www.mkec.com
These drawings and their contents, including, but not limited to, all concepts, designs, & ideas are the exclusive property of MKEC Engineering (MKEC), and may not be used or reproduced in any way without the express consent of MKEC.

MEDIAN AND BRICK PAVER DETAILS

PROJECT NO.	87 N-0662-01
DATE	8/30/2019
SCALE	NA
DESIGNED	JRA
DRAWN	MKEC
CHECKED	JRA

NO.	REVISION	DATE

SHEET NO.

67 OF 194