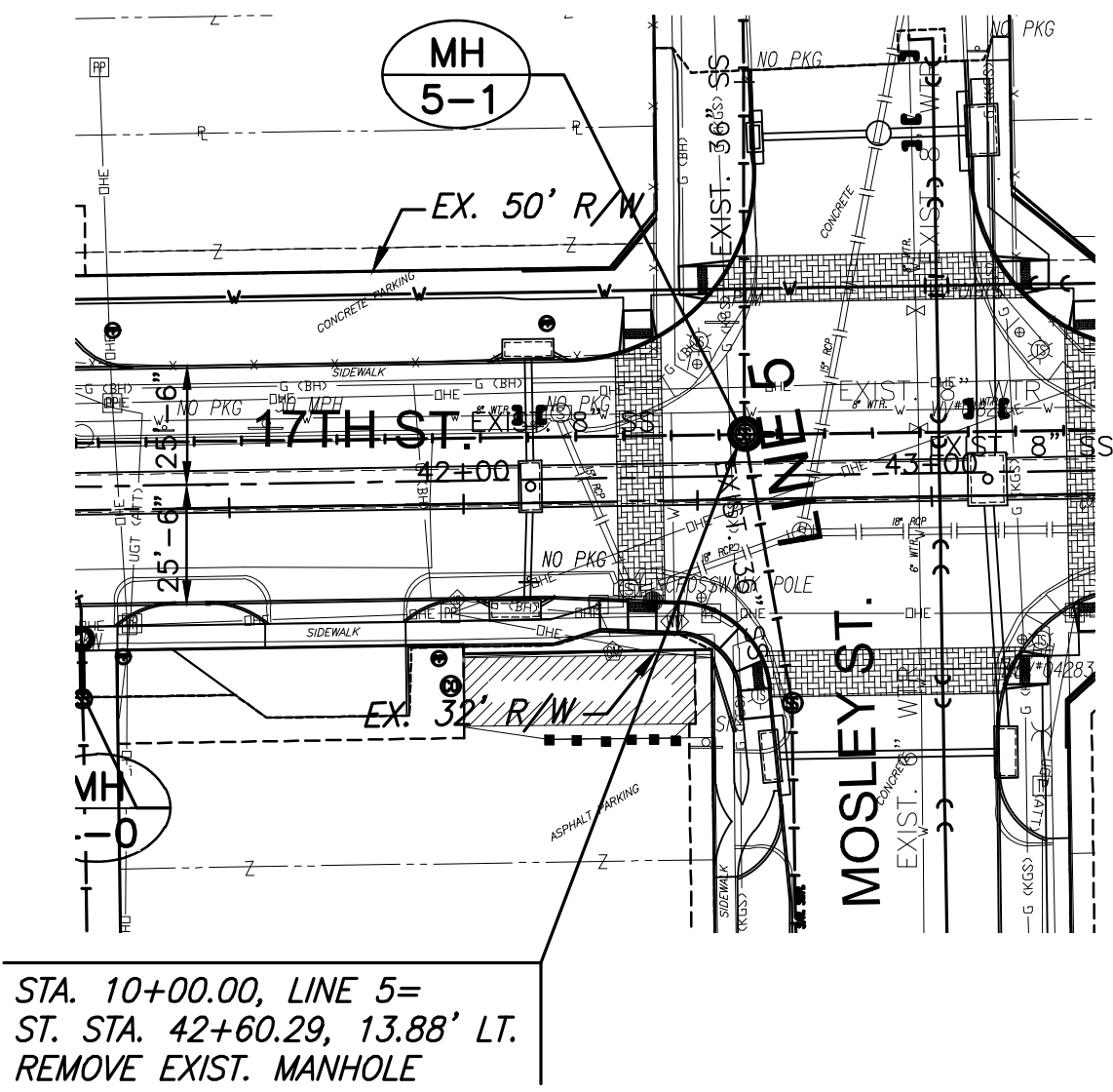
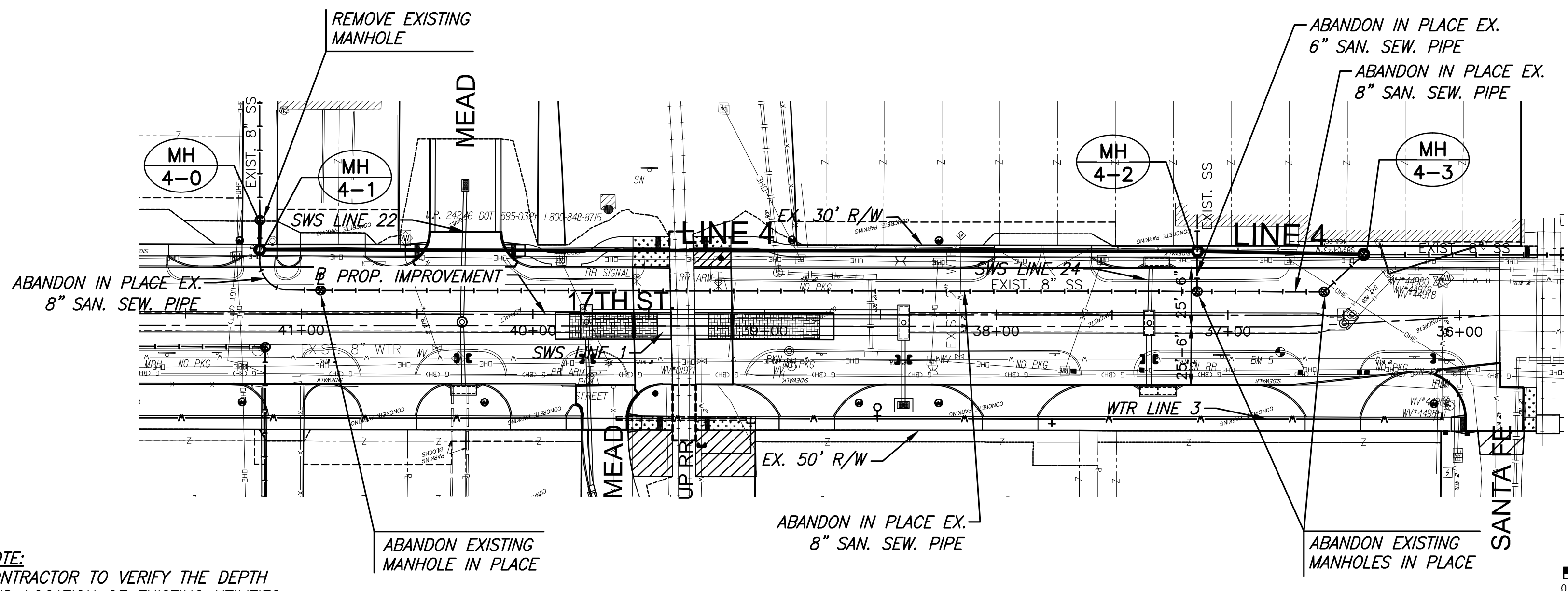


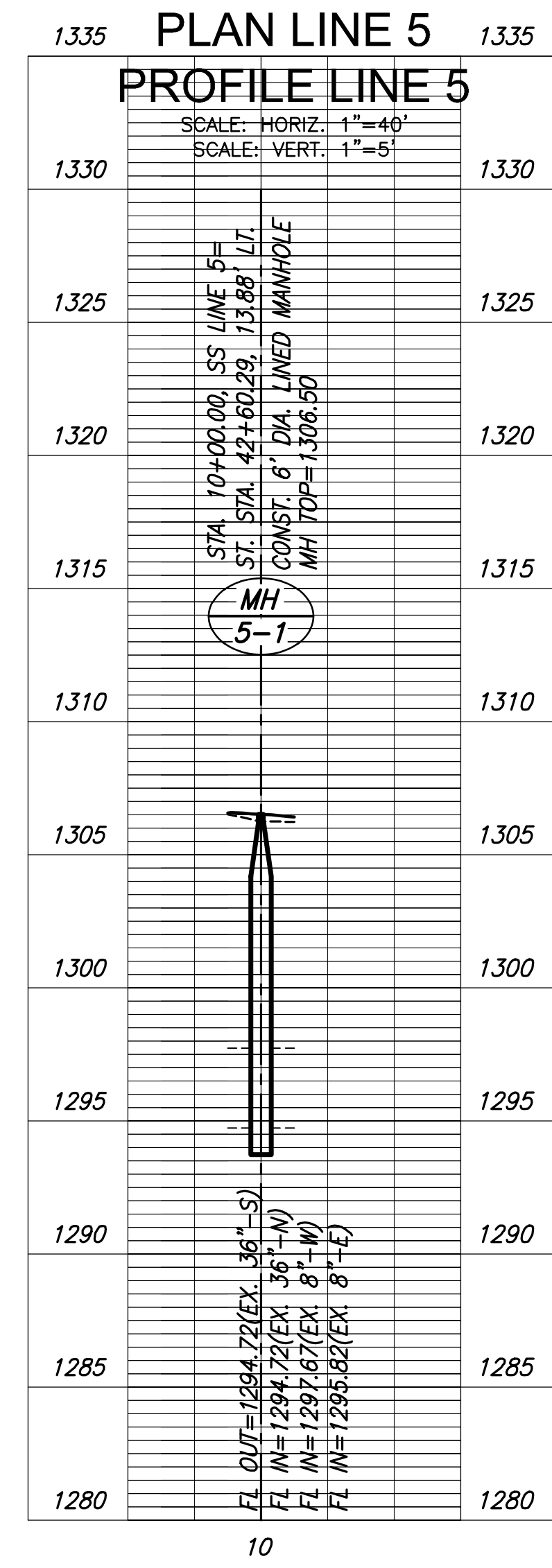
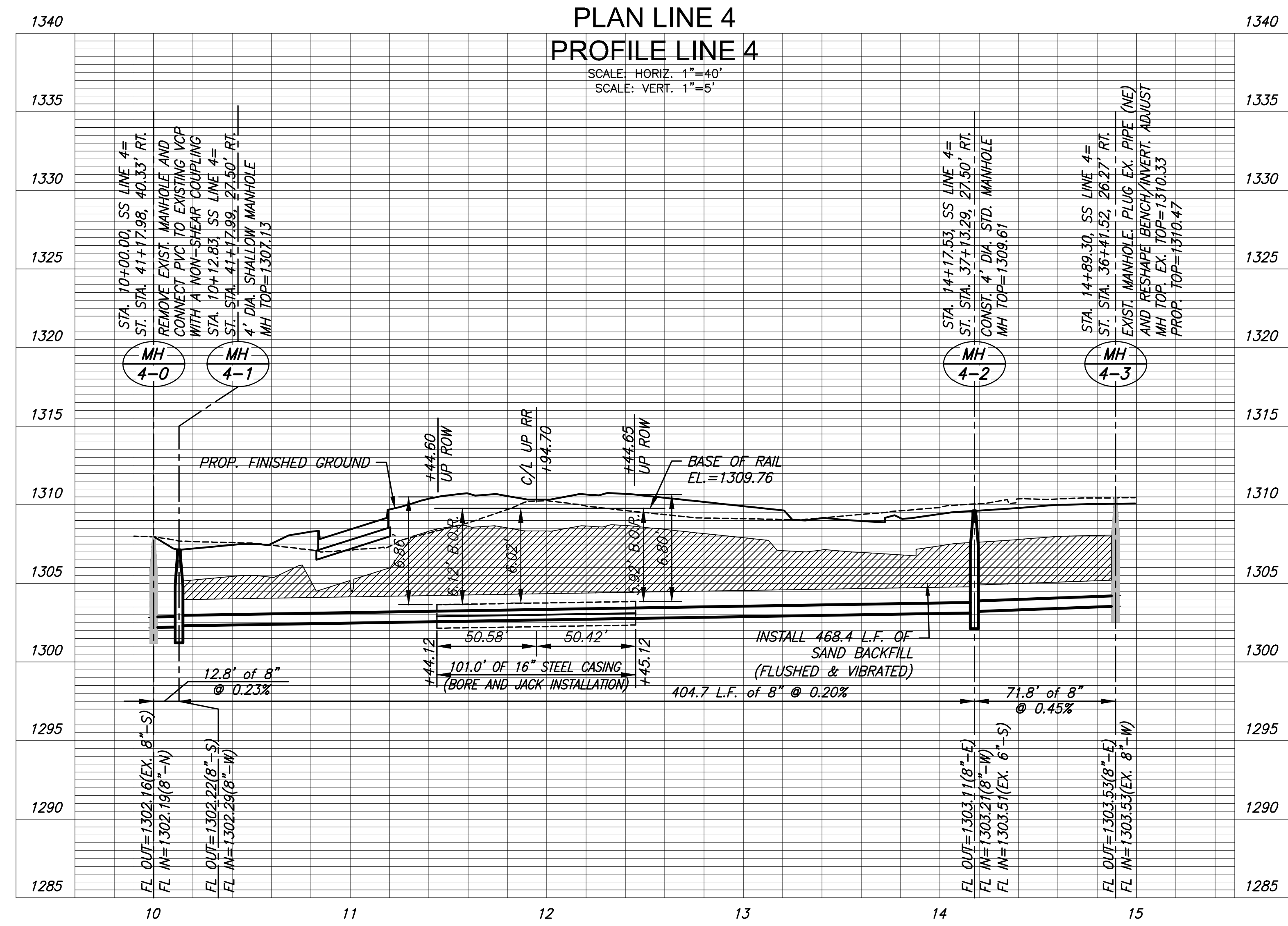
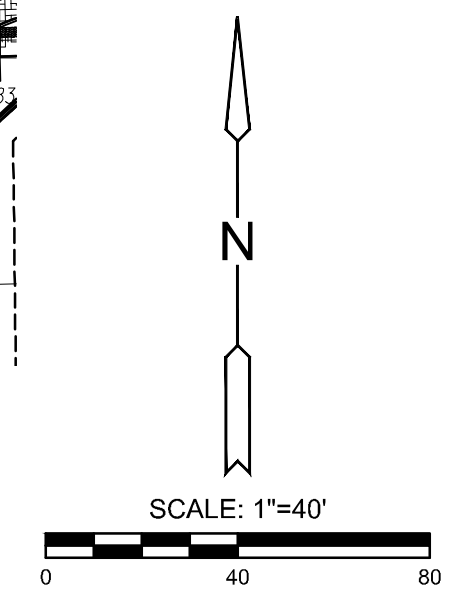
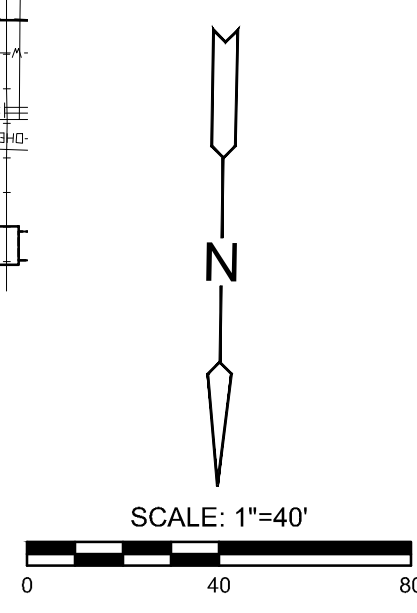
| | | | | |
|--------|--------------|------|-----------|--------------|
| STATE | PROJECT NO. | YEAR | SHEET NO. | TOTAL SHEETS |
| KANSAS | 87 N-0662-01 | 2019 | 88 | 194 |



PLOTTED: Tuesday, September 03, 2019 @ 03:09PM
 J:\CIVIL\177\DWG\SAN\0417-802.DWG



NOTE:
CONTRACTOR TO VERIFY THE DEPTH
AND LOCATION OF EXISTING UTILITIES
PRIOR TO CONSTRUCTION.



STREET IMPROVEMENTS FOR
17TH ST - BROADWAY TO I-135
 FROM BROADWAY TO I-135

©2019
MKEC Engineering
All Rights Reserved
www.mkec.com
These drawings and their contents, including, but not limited to, all concepts, designs, & lists are the exclusive property of MKEC Engineering (MKEC), and may not be used or reproduced in any way without the express consent of MKEC.

**SANITARY SEWER
PLAN & PROFILE
LINE 4 & 5**

| | |
|-------------|-----------|
| PROJECT NO. | 468-85229 |
| DATE | 8/30/2019 |
| SCALE | 1"=40' |
| DESIGNED | JRA |
| DRAWN | WNJ |
| CHECKED | JRA |

| NO. | REVISION | DATE |
|-----|----------|------|
| | | |
| | | |

SHEET NO.
88 OF 194