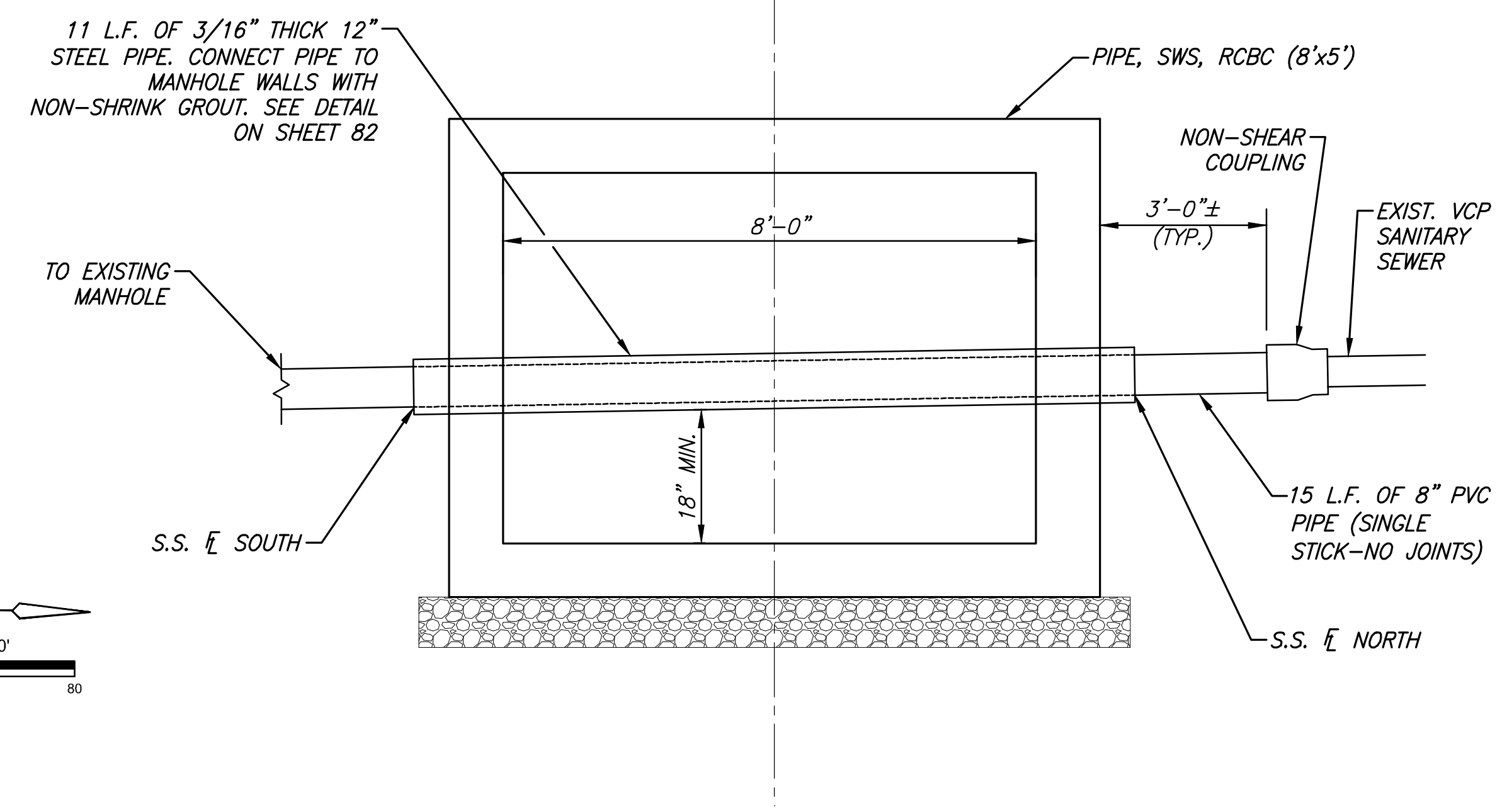
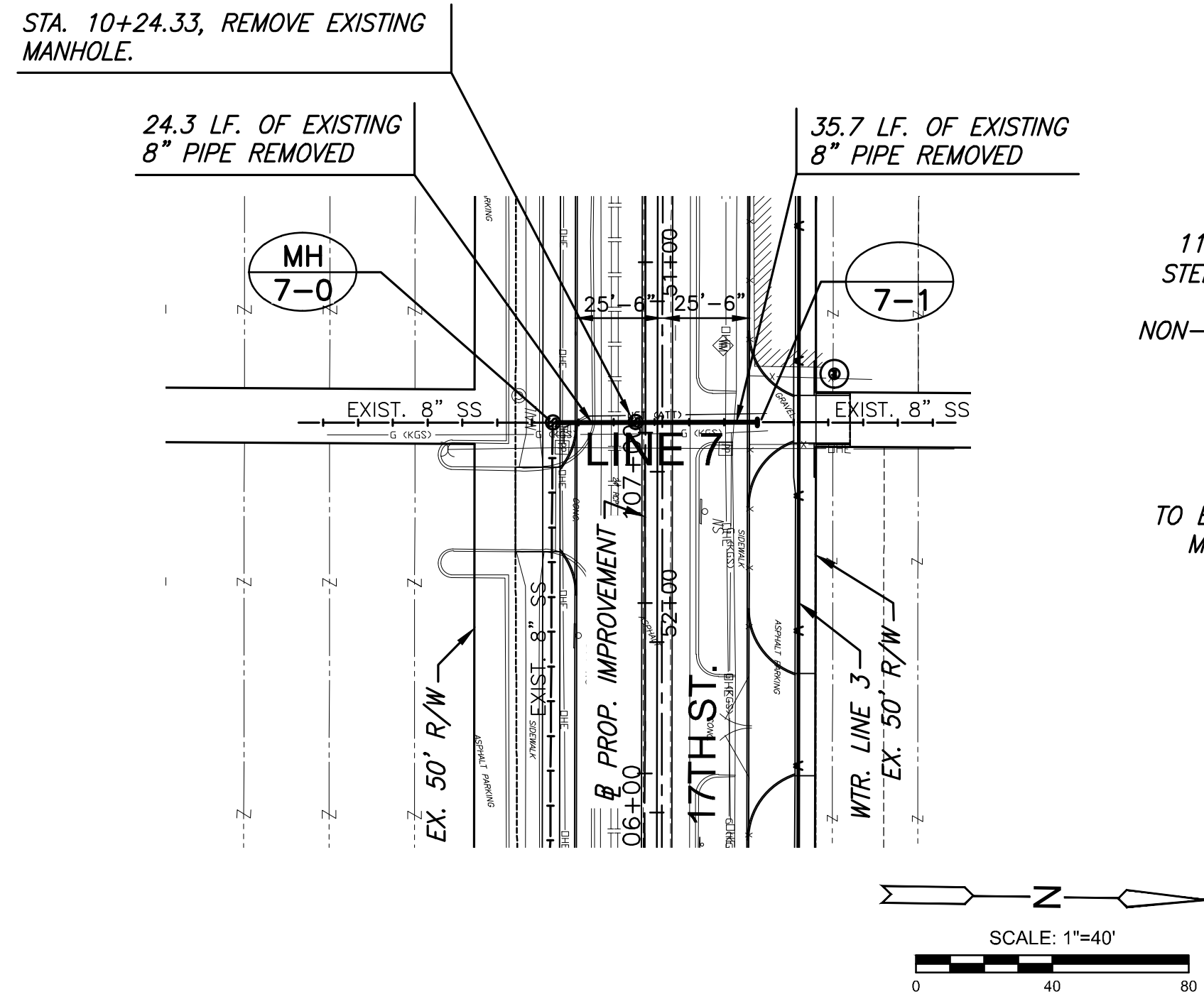
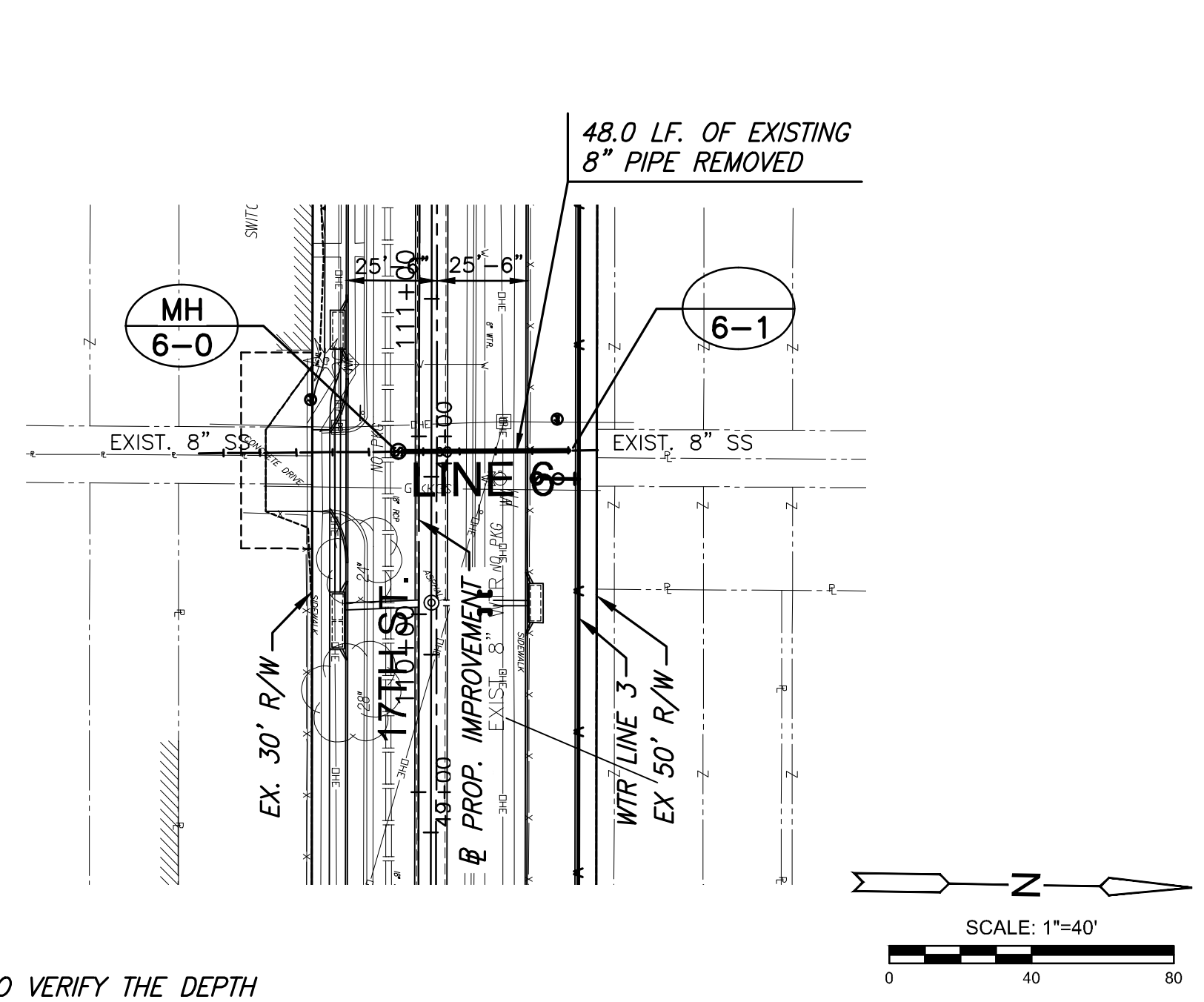


STATE	PROJECT NO.	YEAR	SHEET NO.	TOTAL SHEETS
KANSAS	87 N-0662-01	2019	89	194



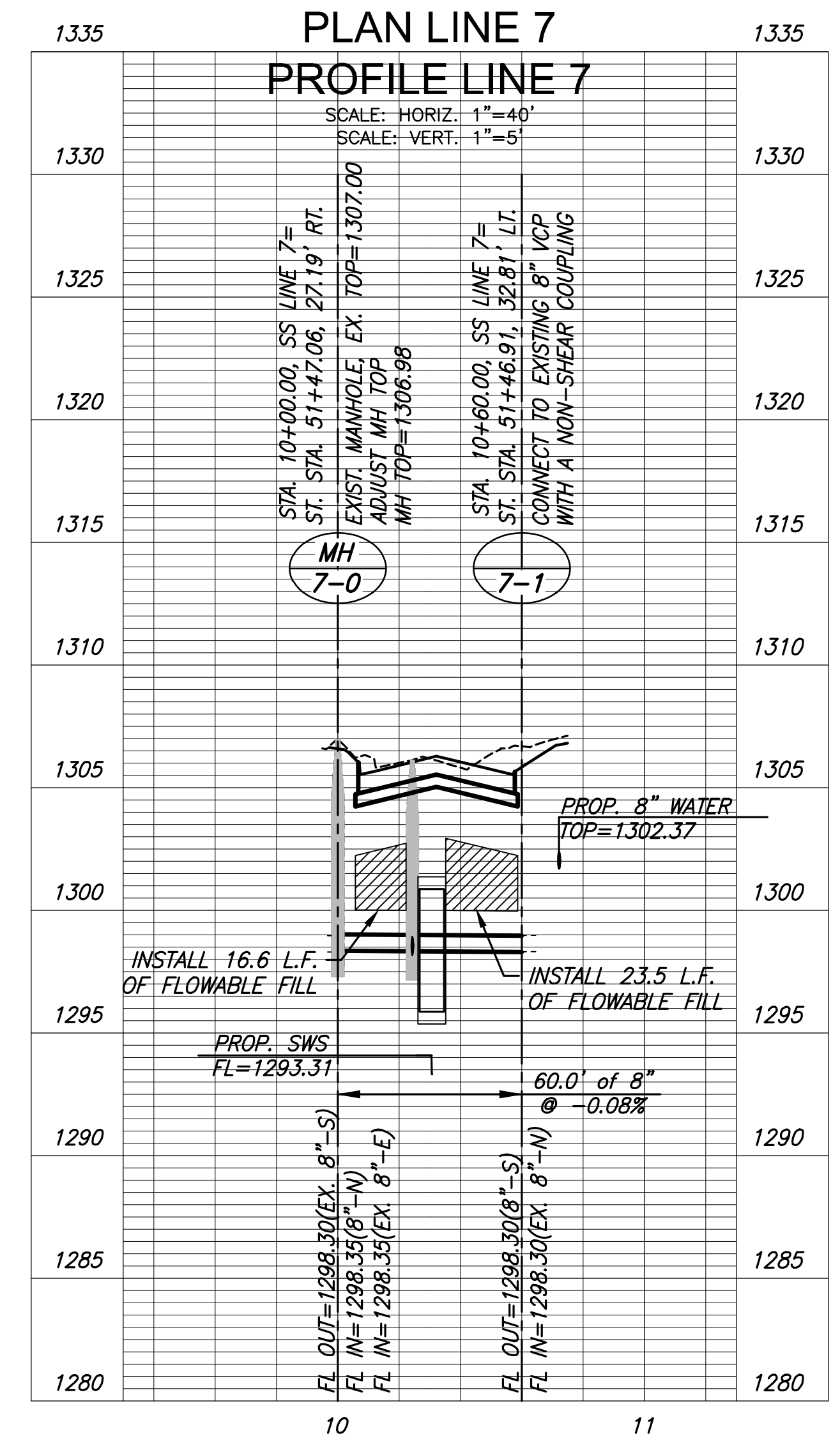
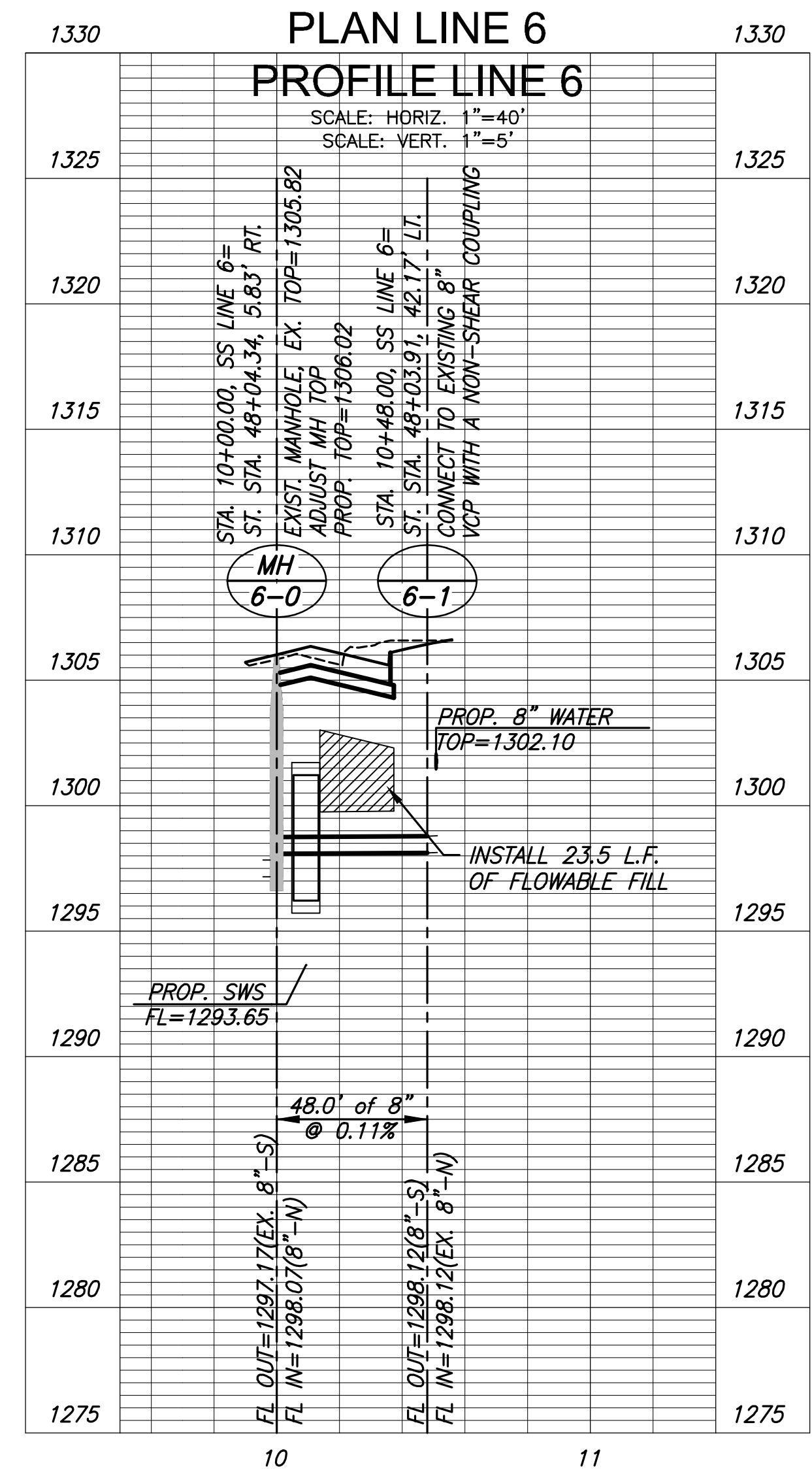
SANITARY SEWER THROUGH SWS MANHOLES

PAID FOR AS "PIPE, SS 8". CASING PAID FOR AS "PIPE, CASING (12" ID)"

PIPE AND STRUCTURE INFORMATION*			
LOCATION	STORM SEWER	SANITARY SEWER #	
	INVERT $\bar{\bar{L}}$	$\bar{\bar{L}}$ SOUTH	$\bar{\bar{L}}$ NORTH
STORM SEWER LINE 1 STATION			
107+14.41	1295.86	1298.33	1298.32
110+57.13	1296.21	1298.07	1298.09

* CONTRACTOR TO CONFIRM ALL DIMENSIONS AND ELEVATIONS PRIOR TO CONSTRUCTING STORM SEWER MANHOLES.

NOTE:
CONTRACTOR TO VERIFY THE DEPTH AND LOCATION OF EXISTING UTILITIES PRIOR TO CONSTRUCTION.



STREET IMPROVEMENTS FOR
17TH ST - BROADWAY TO I-135
FROM BROADWAY TO I-135

©2019 MKEC Engineering All Rights Reserved www.mkec.com
These drawings and their contents, including, but not limited to, all concepts, designs, & lists are the exclusive property of MKEC Engineering (MKEC), and may not be used or reproduced in any way without the express consent of MKEC.

SANITARY SEWER PLAN & PROFILE LINE 6 & 7

PROJECT NO.	468-85229
DATE	8/30/2019
SCALE	1"=40'
DESIGNED	JRA
DRAWN	WJN
CHECKED	JRA

NO.	REVISION	DATE

SHEET NO.
89 OF 194