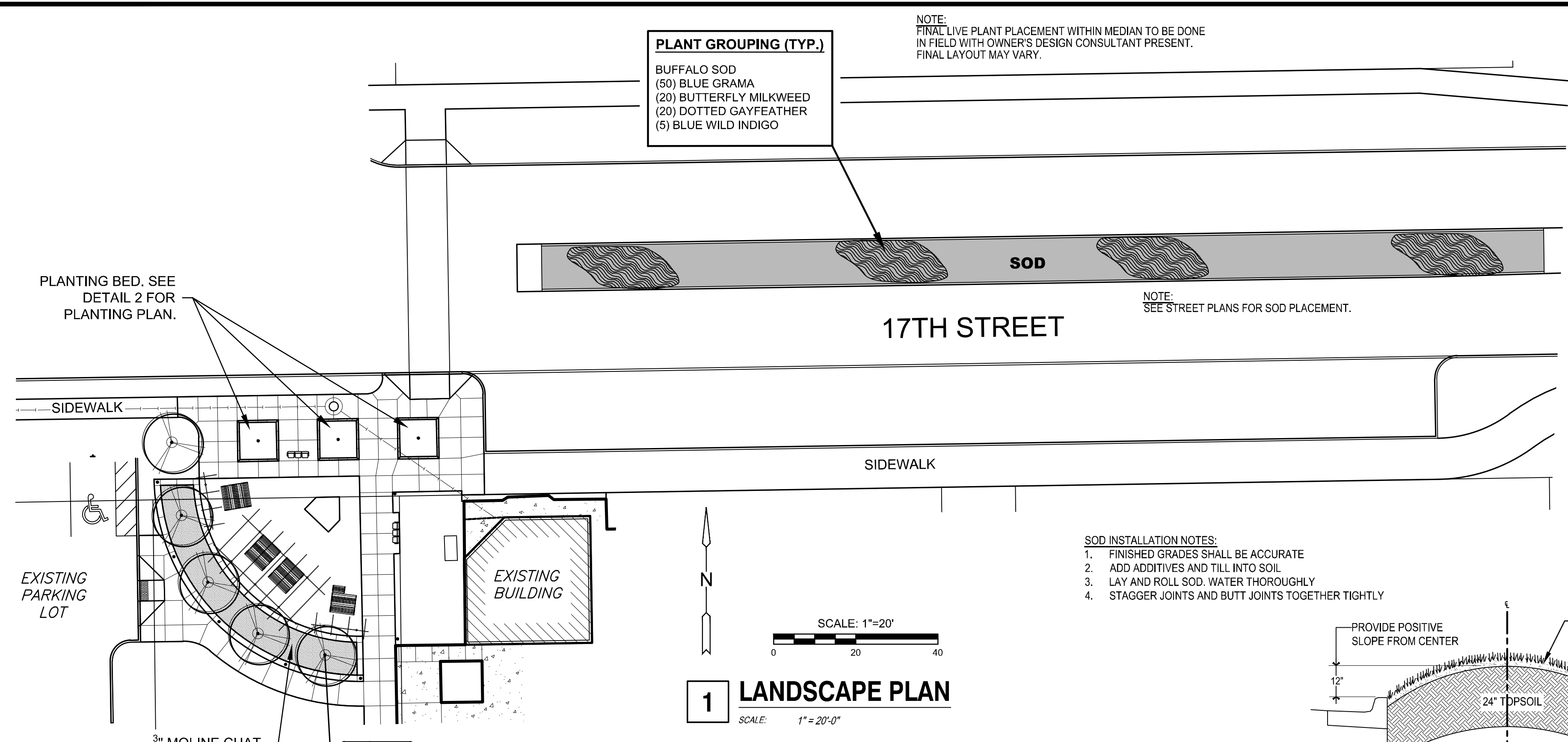


STATE	PROJECT NO.	YEAR	SHEET NO.	TOTAL SHEETS
KANSAS	87 N-0662-01	2019	130	194



STREET IMPROVEMENTS FOR  
**17TH ST - BROADWAY TO I-135**  
FROM BROADWAY TO I-135



**PLANT GROUPING (TYP.)**  
 BUFFALO SOD  
 (50) BLUE GRAMA  
 (20) BUTTERFLY MILKWEED  
 (20) DOTTED GAYFEATHER  
 (5) BLUE WILD INDIGO

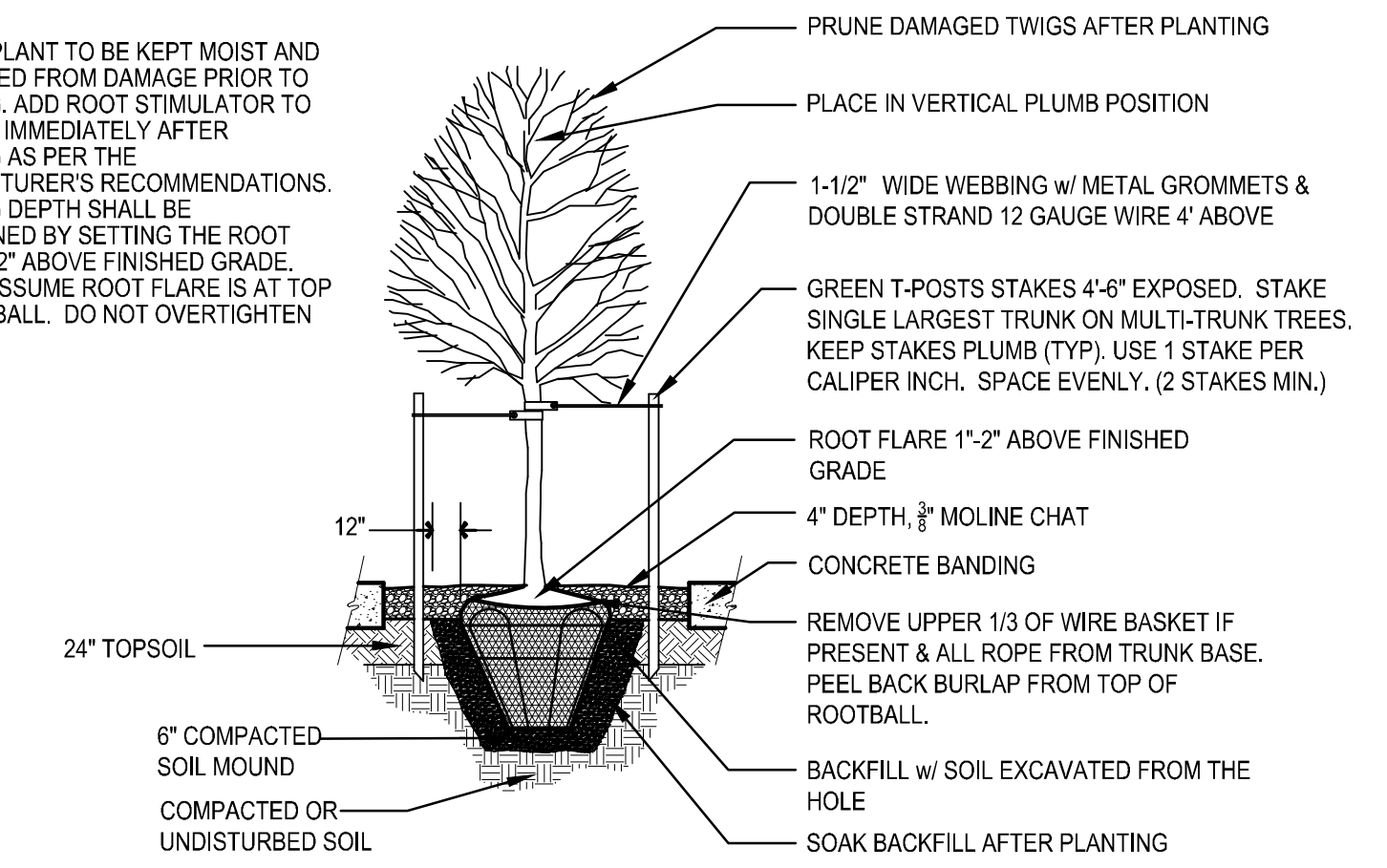
**17TH STREET**

NOTE: FINAL LIVE PLANT PLACEMENT WITHIN MEDIAN TO BE DONE IN FIELD WITH OWNER'S DESIGN CONSULTANT PRESENT. FINAL LAYOUT MAY VARY.

NOTE: SEE STREET PLANS FOR SOD PLACEMENT.

- SOD INSTALLATION NOTES:**
1. FINISHED GRADES SHALL BE ACCURATE
  2. ADD ADDITIVES AND TILL INTO SOIL
  3. LAY AND ROLL SOD. WATER THOROUGHLY
  4. STAGGER JOINTS AND BUTT JOINTS TOGETHER TIGHTLY

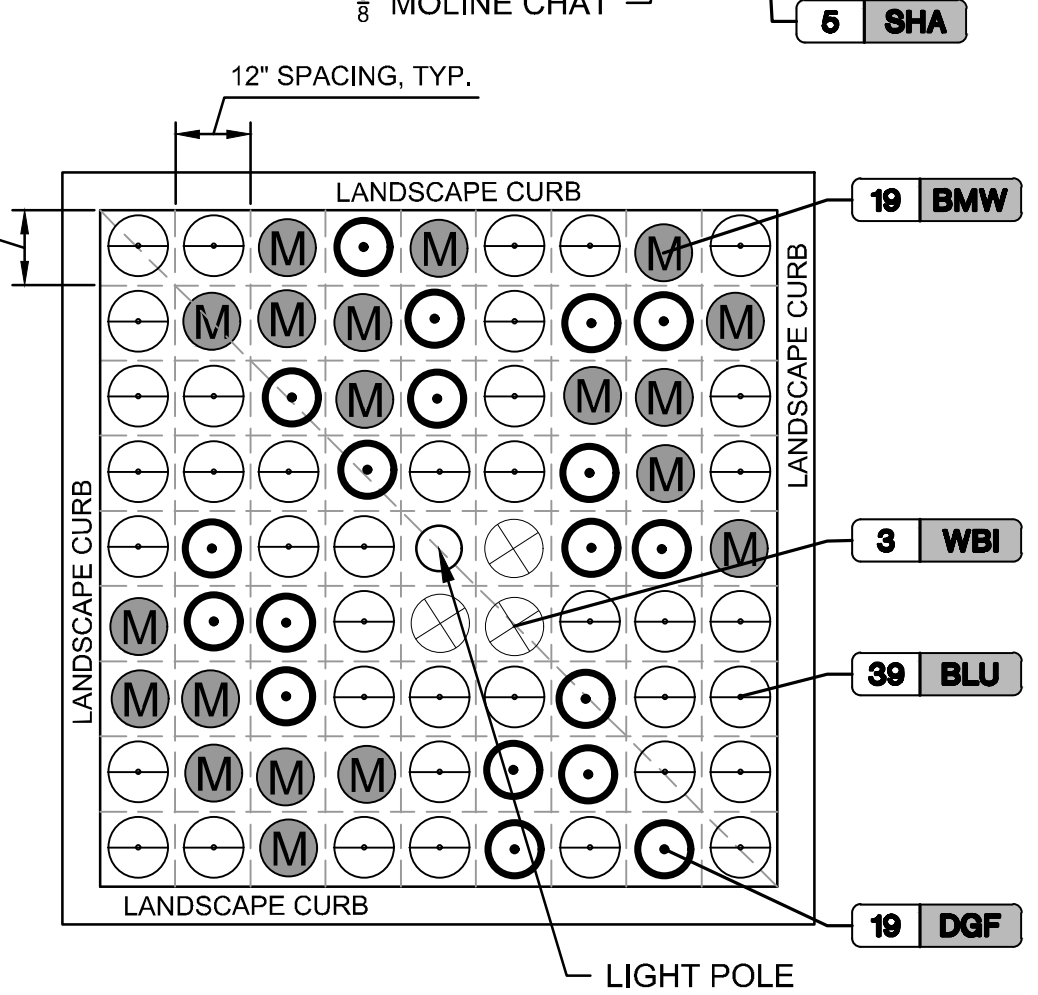
**NOTES:**  
 BALL OF PLANT TO BE KEPT MOIST AND PROTECTED FROM DAMAGE PRIOR TO PLANTING. ADD ROOT STIMULATOR TO SURFACE IMMEDIATELY AFTER PLANTING AS PER THE MANUFACTURER'S RECOMMENDATIONS. PLANTING DEPTH SHALL BE DETERMINED BY SETTING THE ROOT FLARE 1"-2" ABOVE FINISHED GRADE. DO NOT ASSUME ROOT FLARE IS AT TOP OF ROOTBALL. DO NOT OVERTIGHTEN GUYS.



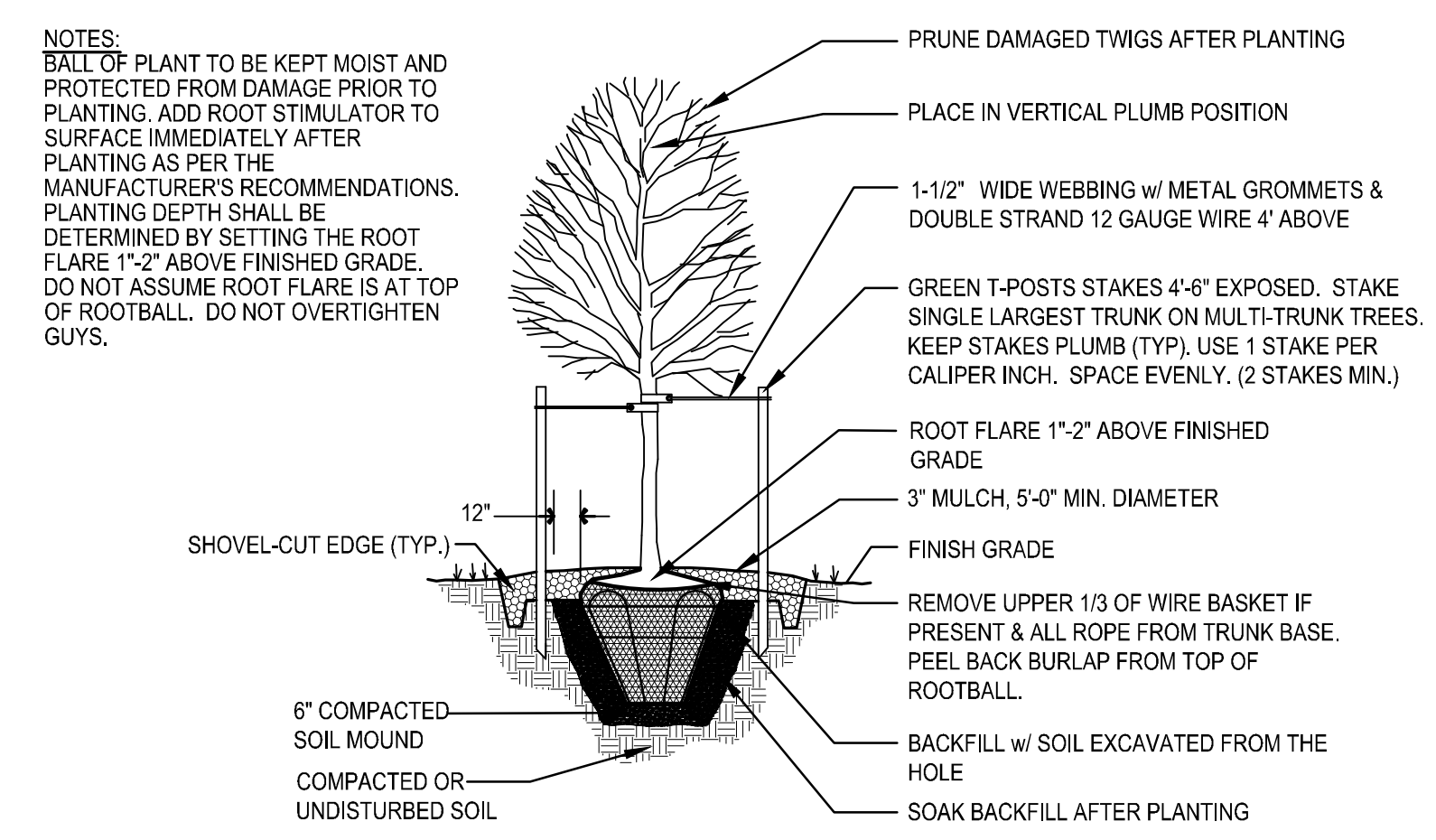
**6 TREE PLANTING DETAIL IN GRAVEL AREA**  
SCALE: NOT TO SCALE

**LANDSCAPE NOTES**

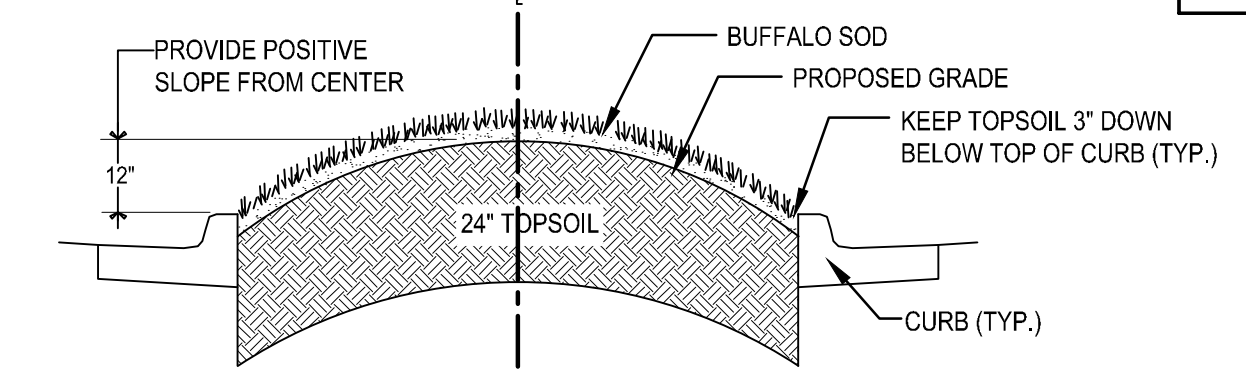
1. CONSTRUCTION TRAFFIC SHALL BE LIMITED TO A CONFINED SPACE WITHIN THE PROPOSED PAVEMENT SPACES OR THE IMMEDIATE CONSTRUCTION AREA TO REDUCE WIDESPREAD SOIL COMPACTION. EQUIPMENT AND VEHICLES SHALL NOT RANDOMLY CROSS THE SITE BUT RATHER STAY ON PRE-DEFINED ROUTES/HAUL ROADS THAT THE OWNER'S REPRESENTATIVE AGREES TO.
2. LANDSCAPE CONTRACTOR SHALL MAKE SURE THAT THE MASS GRADING CONTRACTOR HAS THOROUGHLY RIPPED AND ALLEVIATED ALL COMPACTED SOILS FROM HAULING AND PLACEMENT OPERATIONS.
3. ALL WATER REQUIRED FOR LANDSCAPE OPERATIONS AND FOR ESTABLISHING LANDSCAPE ON THIS SITE WILL BE PROVIDED BY THE OWNER FROM ON-SITE SOURCES AND SUPPLIED TO THE LANDSCAPE CONTRACTOR AT NO CHARGE.
4. PLANTING DATES FOR PLANT MATERIAL SHALL BE DURING THE MONTHS BETWEEN FEB. 15TH AND MAY 31ST OR SEPT. 15TH AND DEC. 15. PLANTING SHALL ONLY BE CONDUCTED WHEN THE GROUND IS NOT FROZEN, SNOW-COVERED, OR IN AN OTHERWISE UNSUITABLE CONDITION FOR PLANTING. DEVIATION FROM THE ABOVE PLANTING DATES WILL ONLY BE PERMITTED WITH APPROVAL FROM THE OWNER'S REPRESENTATIVE.
5. SPREAD A 3" LAYER OF "BACK TO EARTH" COTTON BURR COMPOST. THOROUGHLY TILL INTO PLANTING BACKFILL TOPSOIL.
6. ALL SHRUB/PERENNIAL PLANTING BEDS SHALL BE TREATED WITH A PRE-EMERGENT HERBICIDE SUCH AS TREFLAN OR EQUAL. APPLY AS PER MANUFACTURER'S RECOMMENDATION. THE PRE-EMERGENT SHALL NOT BE APPLIED UNTIL AFTER ALL PLANTING AND MULCHING WITHIN THESE AREAS ARE COMPLETE. DO NOT DISTURB AREAS AFTER APPLICATION. WATER IN AS DIRECTED.
7. INSTALL 3" MIN. DEPTH DARK HARDWOOD MULCH IN LANDSCAPE CURB AREAS AND WITHIN A 5' DIAMETER CIRCLE AROUND ALL TREES PLANTED IN LAWN AREAS. PULL MULCH AWAY FROM TREE TRUNKS WITHIN 3" OF TRUNK.
8. SUSTAIN TREES BY WATERING WITH IRRIGATOR SLOW DRIP IRRIGATION BAGS OR BY HAND WATERING DURING MAINTENANCE PERIOD. AT END OF MAINTENANCE PERIOD, BAGS ARE TO REMAIN ON TREES FOR OWNERS CONTINUED USE.
9. IT IS THE CONTRACTOR'S RESPONSIBILITY TO WATER ALL SOD UNTIL LANDSCAPE JOB IS COMPLETE.
10. ALL SOD AREAS SHALL BE INSTALLED AS FOLLOWS: AFTER FINAL GRADE IS ESTABLISHED AND ALL SOIL AREAS DRAIN AS INTENDED, AND ALL SURFACE IRREGULARITIES HAVE BEEN REMOVED, THOROUGHLY PREPARE SODBED BY TILLING TO A MINIMUM DEPTH OF 3" AND HARROWING. ROLL SOD FOLLOWING LAYING FOR GOOD SOD/SOIL CONTACT AND KEEP IN A MOIST (BUT NOT SATURATED) CONDITION FOR FIRST TWO WEEKS TO PROMOTE GOOD ROOTING. FERTILIZE WITH 1 LB. ACTUAL NITROGEN PER 1,000 S.F. AT TIME OF PLANTING.
11. ALL PLANTS SHALL CONFORM TO ANSI Z60.1 FOR SIZE AND QUALITY STANDARDS.
12. ALL LANDSCAPE PLANTS SHALL BE GUARANTEED FOR ONE YEAR FOLLOWING INITIAL ACCEPTANCE. DEAD OR DEFICIENT PLANTINGS SHALL BE ACCEPTABLY REPLACED, IN PROPER PLANTING SEASON, ONE TIME AT NO COST TO THE OWNER. SOD AND SEED AREAS MAY BE FINAL ACCEPTED AT TIME OF COMPLETION OF ESTABLISHMENT, WITH NO FURTHER GUARANTEE REQUIRED.
13. LANDSCAPE CONTRACTOR SHALL BE RESPONSIBLE FOR MAINTAINING, (INCLUDING WATERING AND MOWING), SOD AND SEEDED AREAS UNTIL ACCEPTANCE OF THESE AREAS. WHEN READY, THE LANDSCAPE CONTRACTOR SHALL REQUEST INSPECTION OF ESTABLISHED SODDED AND SEEDED AREAS BY THE OWNER'S REPRESENTATIVE. SMALLER, CLEARLY DEFINED SODDED OR SEEDED AREAS MAY BE INSPECTED AND GIVEN FINAL ACCEPTANCE AS THESE AREAS BECOME READY. BEFORE OTHER AREAS OF THE SITE ARE READY FOR INSPECTION, CONTRACTOR SHALL THEN CONTINUE TO MAINTAIN THE PLANT MATERIALS ASSOCIATED WITH THIS DOCUMENT FOR ONE FULL GROWING SEASON TO ENSURE ESTABLISHMENT. MAINTENANCE INCLUDES WEEKLY WEEDING, WATERING, TRIMMING, TREE CARE, AND ONE MOWING. COST OF MAINTENANCE SHALL BE SUBSIDIARY TO PROJECT.
14. TOPSOIL MINIMUM DEPTHS SHALL BE PLACED AS FOLLOWS:  
 24" - PLANTING BEDS  
 24" - STREET MEDIANS  
 ALL PLANTING TOPSOIL SHALL BE SUBSIDIARY TO PROJECT.
15. ALL SOIL AMENDMENTS ARE SUBSIDIARY TO THE PLANTINGS BIT ITEMS.



**2 ENLARGED PLAN-PLANTING BED (TYP.)**  
SCALE: NTS

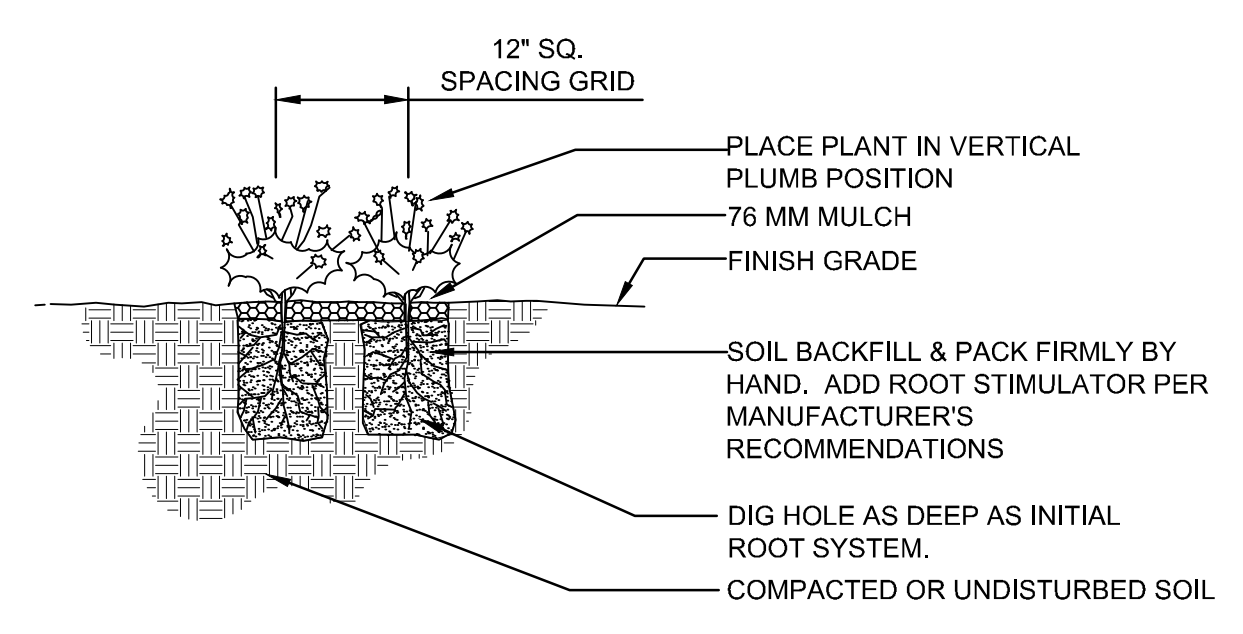


**3 TREE PLANTING DETAIL IN TURF AREA**  
SCALE: NOT TO SCALE



**4 RAISED MEDIAN PLANTING BED DIAGRAM**  
SCALE: NOT TO SCALE

- NOTES:**
1. DO NOT ALLOW PERENNIALS TO DRY OUT.
  2. KEEP MOIST AND PROTECTED FROM DAMAGE PRIOR TO PLANTING.
  3. WATER THOROUGHLY TO FINISH PACKING SOIL AROUND ROOTS.
  4. PLANT MATERIAL SHALL BE HEAVY ROOTED. PLANTS WITH POOR ROOT DEVELOPMENT WILL BE REJECTED.



**5 PERENNIAL PLANTING DETAIL**  
SCALE: NOT TO SCALE

PLANT SCHEDULE					
KEY	QTY	COMMON NAME	BOTANICAL NAME	SIZE & METHOD OF HANDLING	NOTES
<b>DECIDUOUS TREES</b>					
SHA	5	SHANTUNG MAPLE	ACER TRUNCATUM	3" CAL. / B&B	
<b>PERENNIALS</b>					
BLU	317	BLUE GRAMA	BOUTELOUA GRACILIS	#1 CONTAINER	*
BMW	137	BUTTERFLY MILKWEED	ASCLEPIAS TUBEROSA	#1 CONTAINER	*
WBI	29	WILD BLUE INDIGO	BAPTISIA AUSTRALIS	#1 CONTAINER	*
DGF	137	DOTTED GAYFEATHER	LIATRIS PUNCTATA	#1 CONTAINER	*
<b>TURF GRASS</b>					
SOD		BUFFALO GRASS: 'BAREFOOT'			SOD

\*WHEN PLANTED IN STREET MEDIAN (NO MULCH), TO BE INSTALLED AFTER BUFFALO SOD IS IN PLACE.

©2016 MKEC Engineering All Rights Reserved www.mkec.com  
 These drawings and their contents, including, but not limited to, all concepts, designs, & ideas are the exclusive property of MKEC Engineering (MKEC), and may not be used or reproduced in any way without the express consent of MKEC.

**PLAZA & MEDIAN LANDSCAPE PLAN**

PROJECT NO.	87 N-0662-01	
DATE	8/30/2019	
SCALE	1" = 20'	
DESIGNED	RKO	
DRAWN	DML	
CHECKED	JAG	
NO.	REVISION	DATE