

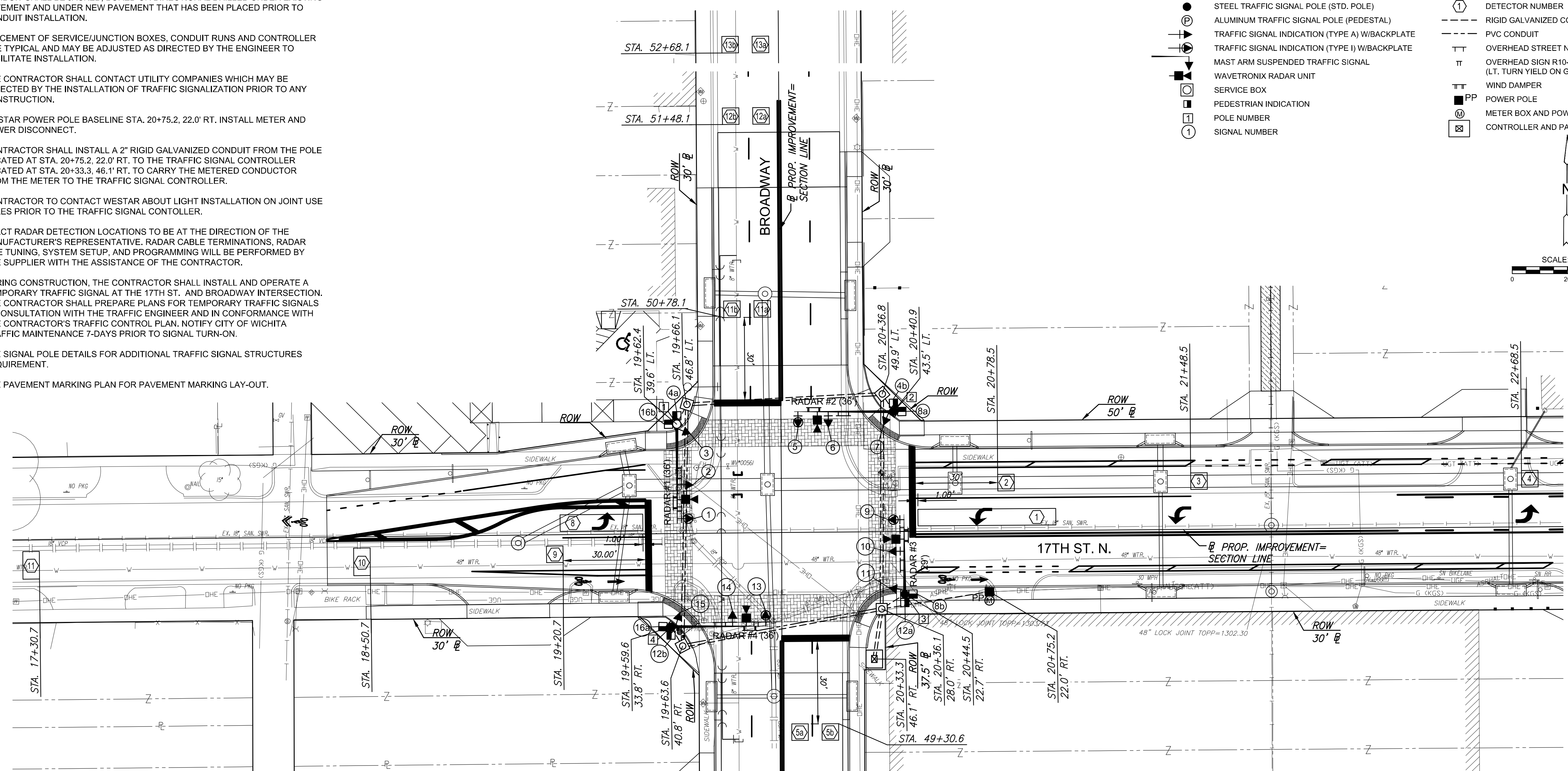
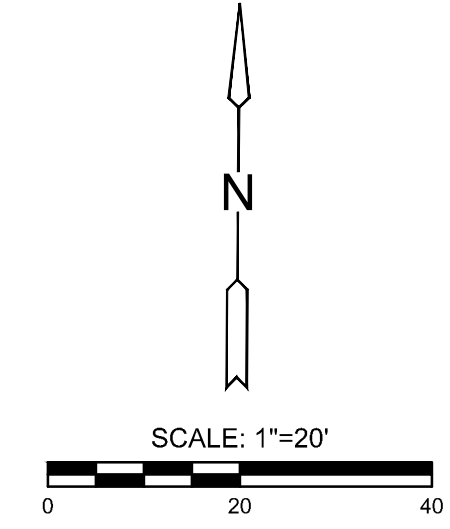
ROUTED: Tuesday, September 03, 2019 @ 04:19PM  
 J:\CIVIL\177\DWG\SIGNALS\177-SP-01.DWG

**GENERAL NOTES**

- CONDUIT SHALL BE JACKED, BORED OR DIRECTIONAL DRILLED UNDER EXISTING PAVEMENT AND UNDER NEW PAVEMENT THAT HAS BEEN PLACED PRIOR TO CONDUIT INSTALLATION.
- PLACEMENT OF SERVICE/JUNCTION BOXES, CONDUIT RUNS AND CONTROLLER ARE TYPICAL AND MAY BE ADJUSTED AS DIRECTED BY THE ENGINEER TO FACILITATE INSTALLATION.
- THE CONTRACTOR SHALL CONTACT UTILITY COMPANIES WHICH MAY BE AFFECTED BY THE INSTALLATION OF TRAFFIC SIGNALIZATION PRIOR TO ANY CONSTRUCTION.
- WESTAR POWER POLE BASELINE STA. 20+75.2, 22.0' RT. INSTALL METER AND POWER DISCONNECT.
- CONTRACTOR SHALL INSTALL A 2" RIGID GALVANIZED CONDUIT FROM THE POLE LOCATED AT STA. 20+75.2, 22.0' RT. TO THE TRAFFIC SIGNAL CONTROLLER LOCATED AT STA. 20+33.3, 46.1' RT. TO CARRY THE METERED CONDUCTOR FROM THE METER TO THE TRAFFIC SIGNAL CONTROLLER.
- CONTRACTOR TO CONTACT WESTAR ABOUT LIGHT INSTALLATION ON JOINT USE POLES PRIOR TO THE TRAFFIC SIGNAL CONTROLLER.
- EXACT RADAR DETECTION LOCATIONS TO BE AT THE DIRECTION OF THE MANUFACTURER'S REPRESENTATIVE. RADAR CABLE TERMINATIONS, RADAR FINE TUNING, SYSTEM SETUP, AND PROGRAMMING WILL BE PERFORMED BY THE SUPPLIER WITH THE ASSISTANCE OF THE CONTRACTOR.
- DURING CONSTRUCTION, THE CONTRACTOR SHALL INSTALL AND OPERATE A TEMPORARY TRAFFIC SIGNAL AT THE 17TH ST. AND BROADWAY INTERSECTION. THE CONTRACTOR SHALL PREPARE PLANS FOR TEMPORARY TRAFFIC SIGNALS IN CONSULTATION WITH THE TRAFFIC ENGINEER AND IN CONFORMANCE WITH THE CONTRACTOR'S TRAFFIC CONTROL PLAN. NOTIFY CITY OF WICHITA TRAFFIC MAINTENANCE 7-DAYS PRIOR TO SIGNAL TURN-ON.
- SEE SIGNAL POLE DETAILS FOR ADDITIONAL TRAFFIC SIGNAL STRUCTURES REQUIREMENT.
- SEE PAVEMENT MARKING PLAN FOR PAVEMENT MARKING LAY-OUT.

**LEGEND**

- STEEL TRAFFIC SIGNAL POLE (JOINT USE)
- STEEL TRAFFIC SIGNAL POLE (STD. POLE)
- ⊕ ALUMINUM TRAFFIC SIGNAL POLE (PEDESTAL)
- ⊖ TRAFFIC SIGNAL INDICATION (TYPE A) W/BACKPLATE
- ⊖ TRAFFIC SIGNAL INDICATION (TYPE I) W/BACKPLATE
- ⊖ MAST ARM SUSPENDED TRAFFIC SIGNAL
- ⊖ WAVETRONIX RADAR UNIT
- SERVICE BOX
- ⊖ PEDESTRIAN INDICATION
- ⊖ POLE NUMBER
- ⊖ SIGNAL NUMBER
- VEHICLE DETECTION ZONE
- ① DETECTOR NUMBER
- RIGID GALVANIZED CONDUIT (RGC)
- PVC CONDUIT
- ⊖ OVERHEAD STREET NAME SIGN
- ⊖ OVERHEAD SIGN R10-10 (LT. TURN YIELD ON GREEN)
- ⊖ WIND DAMPER
- ⊖ PP POWER POLE
- ⊖ METER BOX AND POWER DISCONNECT
- ⊖ CONTROLLER AND PAD



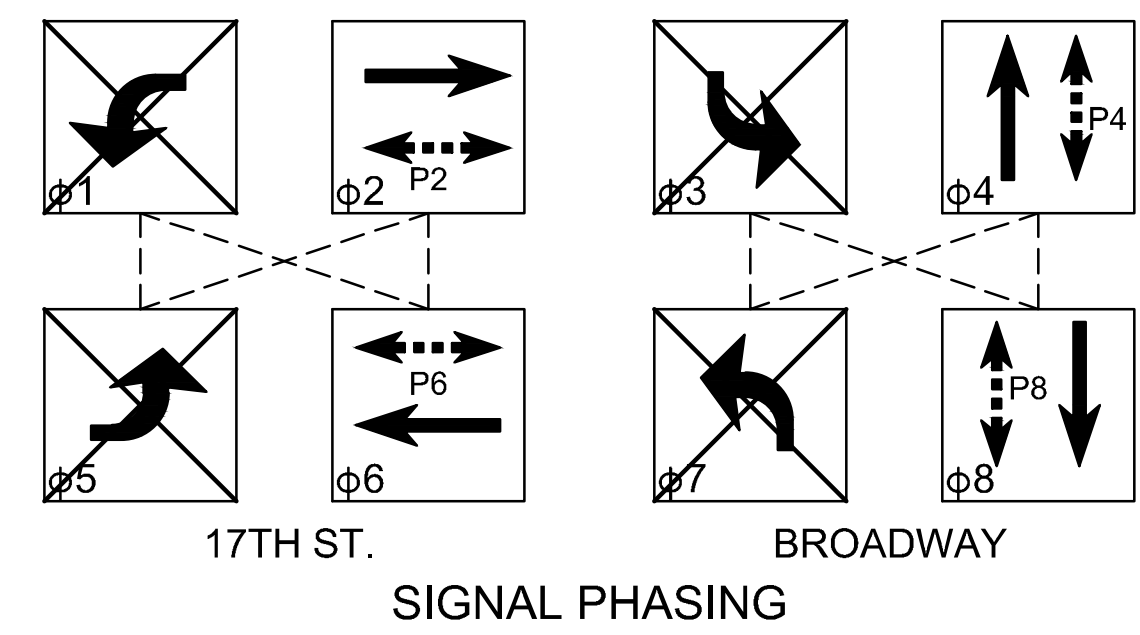
**TYPE 2070 CONTROLLER SETTINGS**

INTERVAL	"WAPITI PROGRAM"								NORMAL DISPLAY								
	PHASE								TIME CLOCK	FEATURES							
	1 WBLT	2 EB	3 SBLT	4 NB	5 EBLT	6 WB	7 NBLT	8 SB		1	2	3	4	5	6	7	8
MAX	0	45	50	45	50	45	50	0	YEAR				X				X
MAX 2	1	45	50	45	50	45	50	1	MONTH								
WALK	2	7	7	7	7	7	7	2	DAY/MONTH								
FL. DW.	3	15	15	15	15	15	15	3	DAY/WEEK		X	X	X	X	X	X	X
MAX INIT.	4	10	10	10	10	10	10	4	HOUR	Ø PERMIT	X	X	X	X	X	X	X
MIN GREEN	5	8	8	8	8	8	8	5	MINUTE	PED PHASES	X	X	X	X	X	X	X
TBR	6	10	10	10	10	10	10	6	SECOND	LEAD PHASES	X	X	X	X	X	X	X
TTR	7	15	15	15	15	15	15	7		DBL ENTRY							
	8							8		SEQUENTIAL							
PASSAGE	9	2.0	2.0	2.0	2.0	2.0	2.0	9		START UP YEL							
MIN GAP	a	1.0	1.0	1.0	1.0	1.0	1.0	a		OVERLAP A							
ADD ACT	b	2.5	2.5	2.5	2.5	2.5	2.5	b		OVERLAP B							
YELLOW	c	4.0	4.0	4.0	4.0	4.0	4.0	c		OVERLAP C							
RED CLR.	d	1.5	1.5	1.5	1.5	1.5	1.5	d		OVERLAP D							
RED REV.	e	0.0	0.0	0.0	0.0	0.0	0.0	e		EXCLUSIVE							
WALK II	f	0.0	0.0	0.0	0.0	0.0	0.0	f		SIM GAP							

LTT-2

**DETECTION ZONES**

RADAR NO.	ZONE NO.	SIZES (W x L)	MOVEMENT CALLED
1	1	6 x 50	1
1	2	6 x 6	6
1	3	6 x 6	6
1	4	6 x 6	6
2	5a, 5b	6 x 6	4
2	6a, 6b	6 x 6	4
2	7a, 7b	6 x 6	4
3	8	6 x 30	5
3	9	6 x 6	2
3	10	6 x 10	2
3	11	6 x 10	2
4	12a, 12b	6 x 6	8
4	13a, 13b	6 x 6	8
4	14a, 14b	6 x 6	8



**STREET IMPROVEMENTS FOR**  
**17TH ST - BROADWAY TO I-135**  
 FROM BROADWAY TO I-135

©2019 MKEC Engineering  
 All Rights Reserved  
 www.mkec.com  
 These drawings and their contents, including, but not limited to, all concepts, designs, & ideas are the exclusive property of MKEC Engineering (MKEC), and may not be used or reproduced in any way without the express consent of MKEC.

**17TH & BROADWAY TRAFFIC SIGNAL PLAN**

PROJECT NO.	87 N-0662-01
DATE	8/30/2019
SCALE	1"=20'
DESIGNED	JRA
DRAWN	WNJ
CHECKED	JRA

NO.	REVISION	DATE

SHEET NO. 135 OF 194