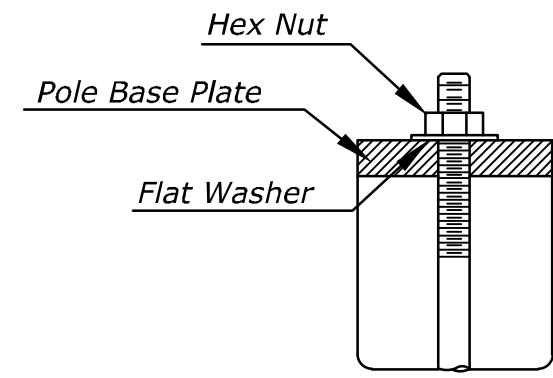
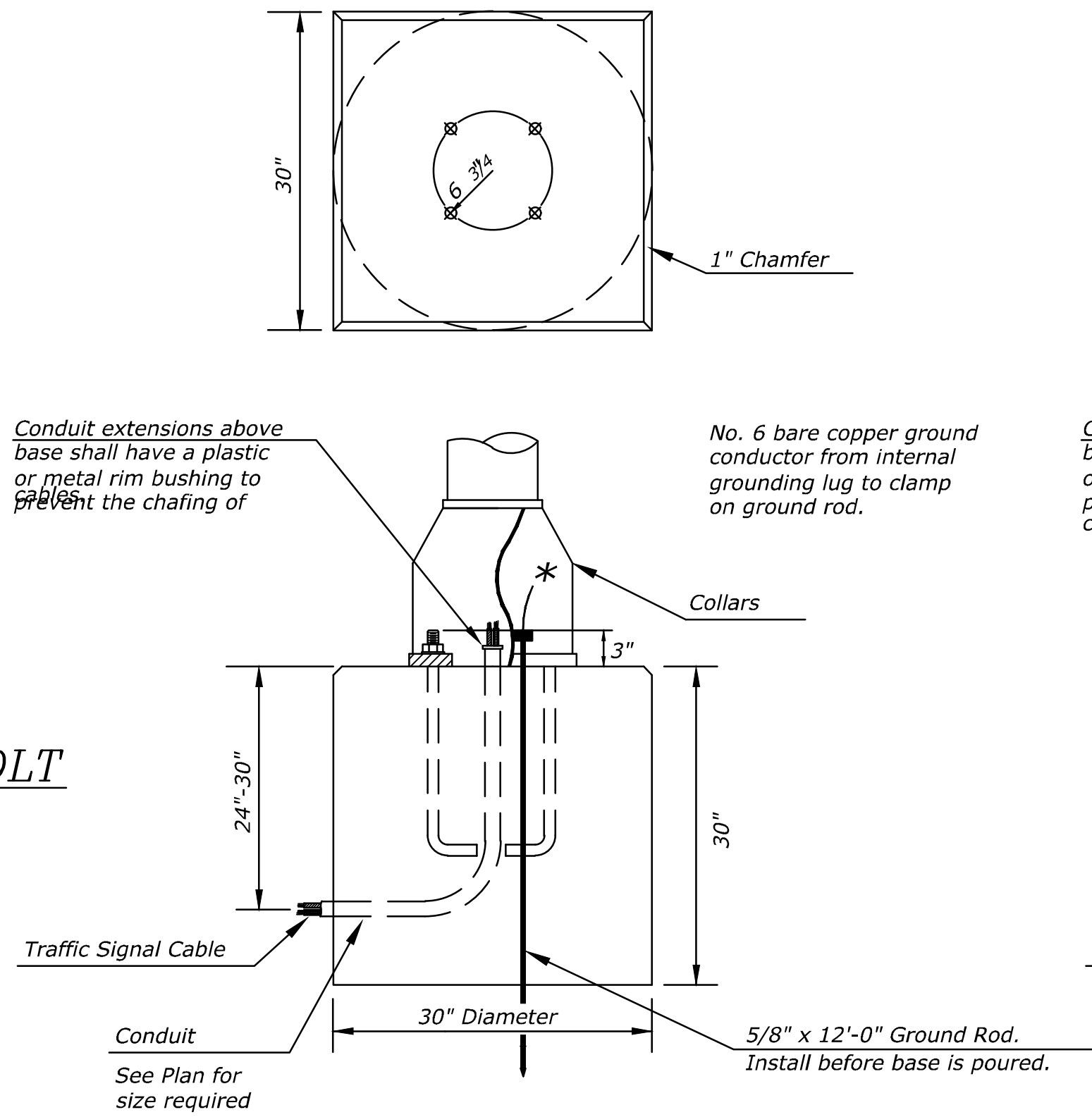


PLOTTED: Tuesday, September 03, 2019 @ 04:24PM

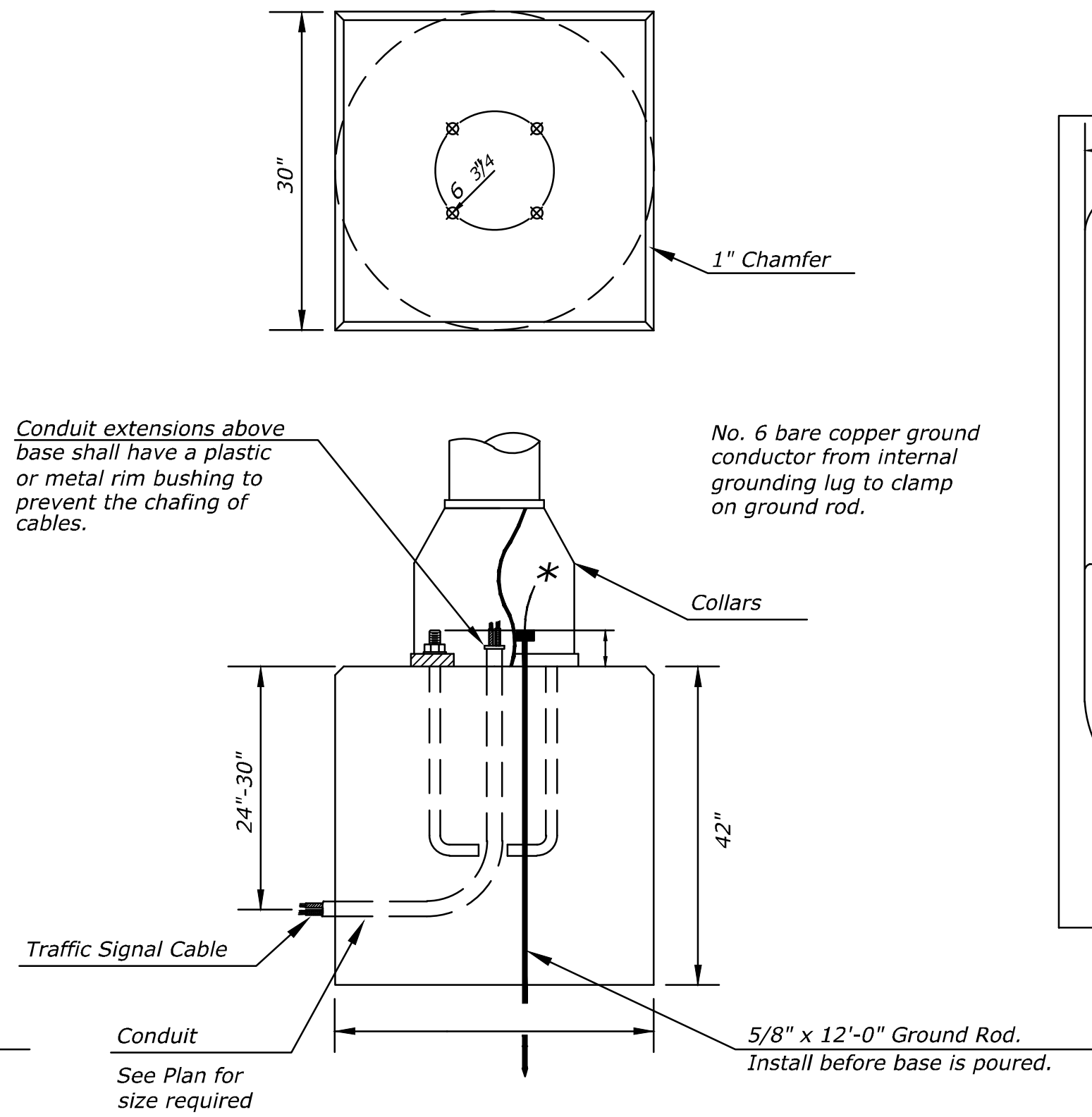
Use Keystone "No-Weld Number 1 Anti-Seize Compound" on all bolts & nuts.



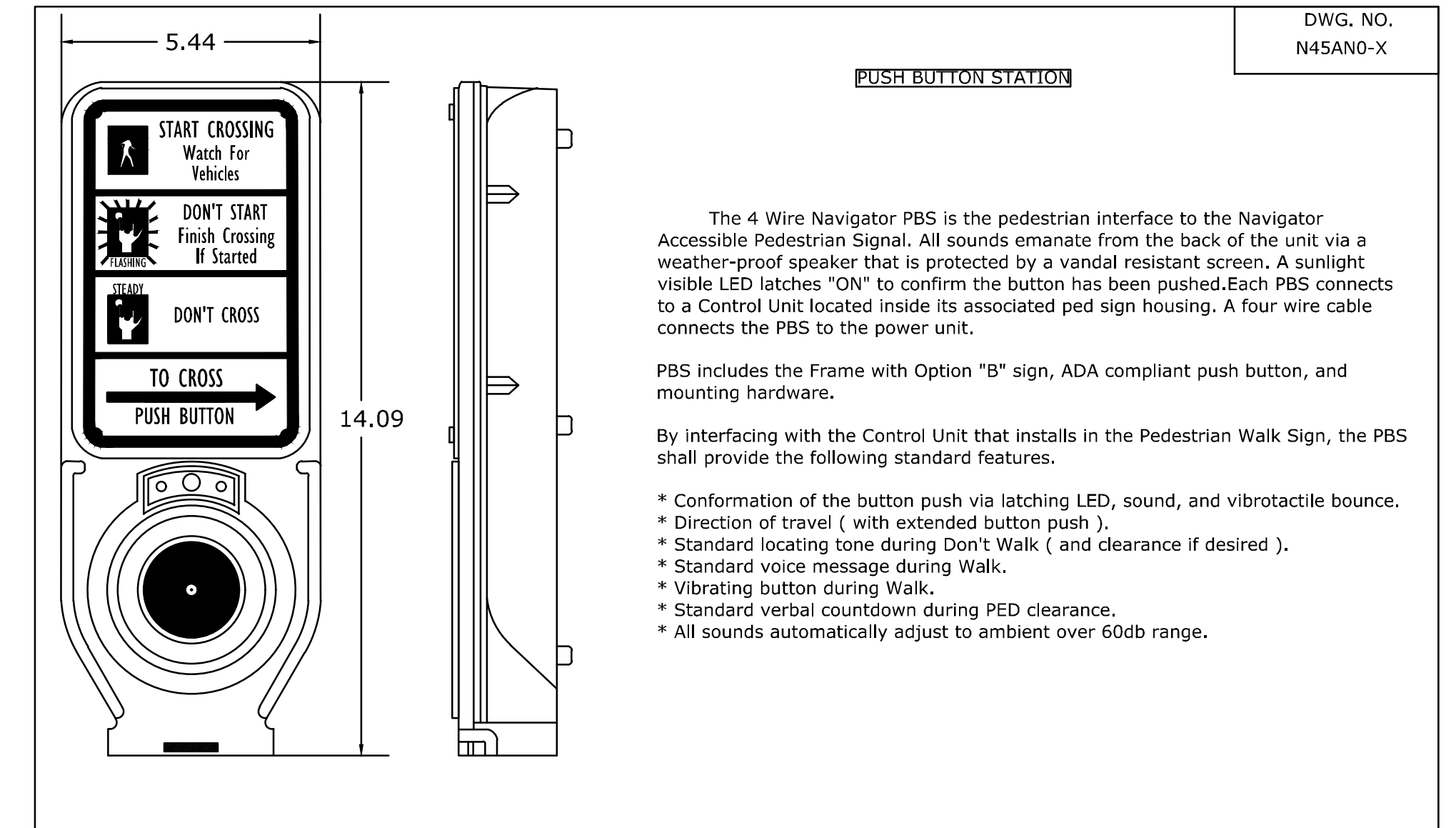
**ANCHOR BOLT
DETAIL**



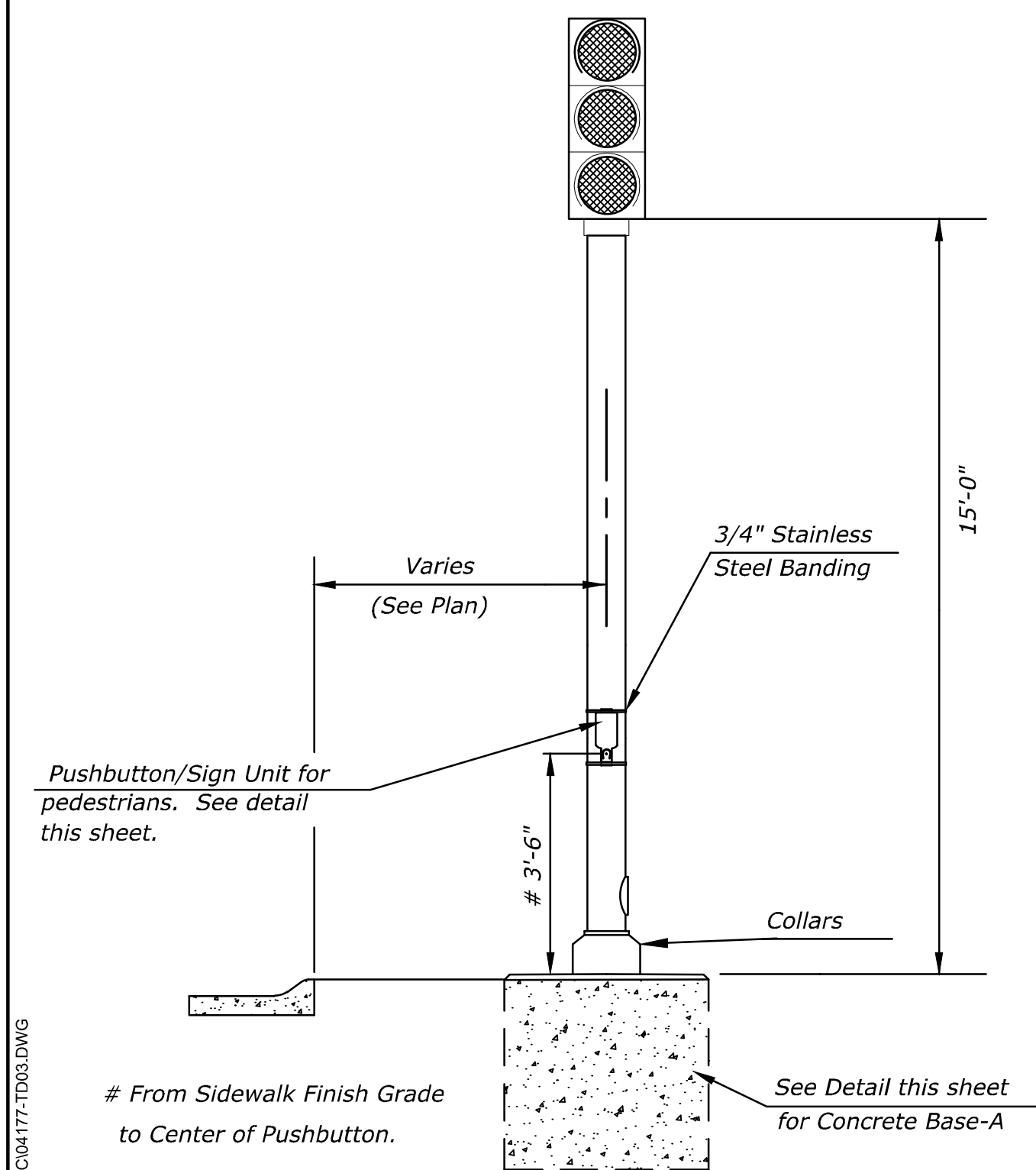
CONCRETE BASE-A DETAIL



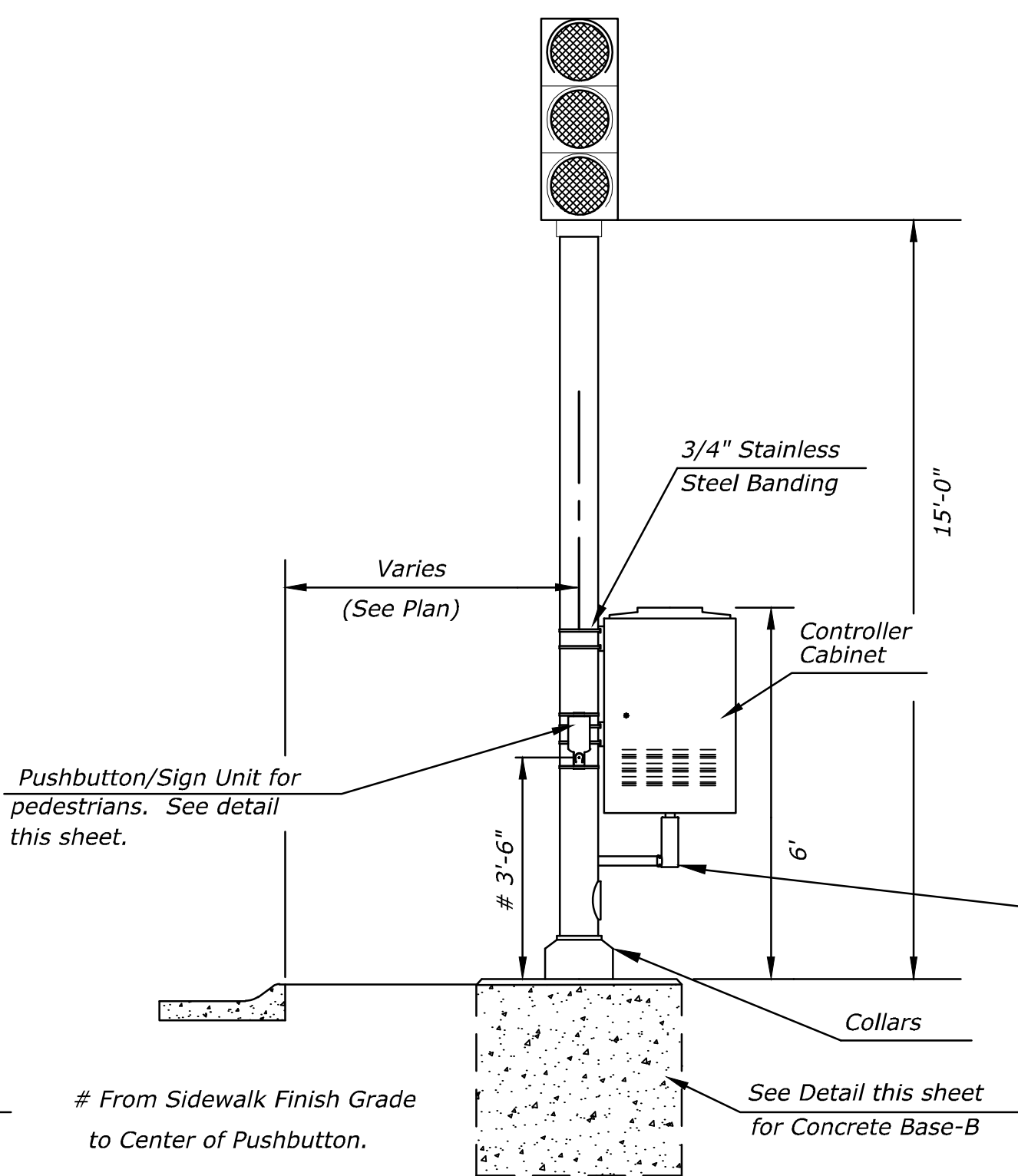
**CONCRETE BASE-B DETAIL FOR
TRAFFIC SIGNAL PEDESTAL
WITH CONTROLLER CABINET**



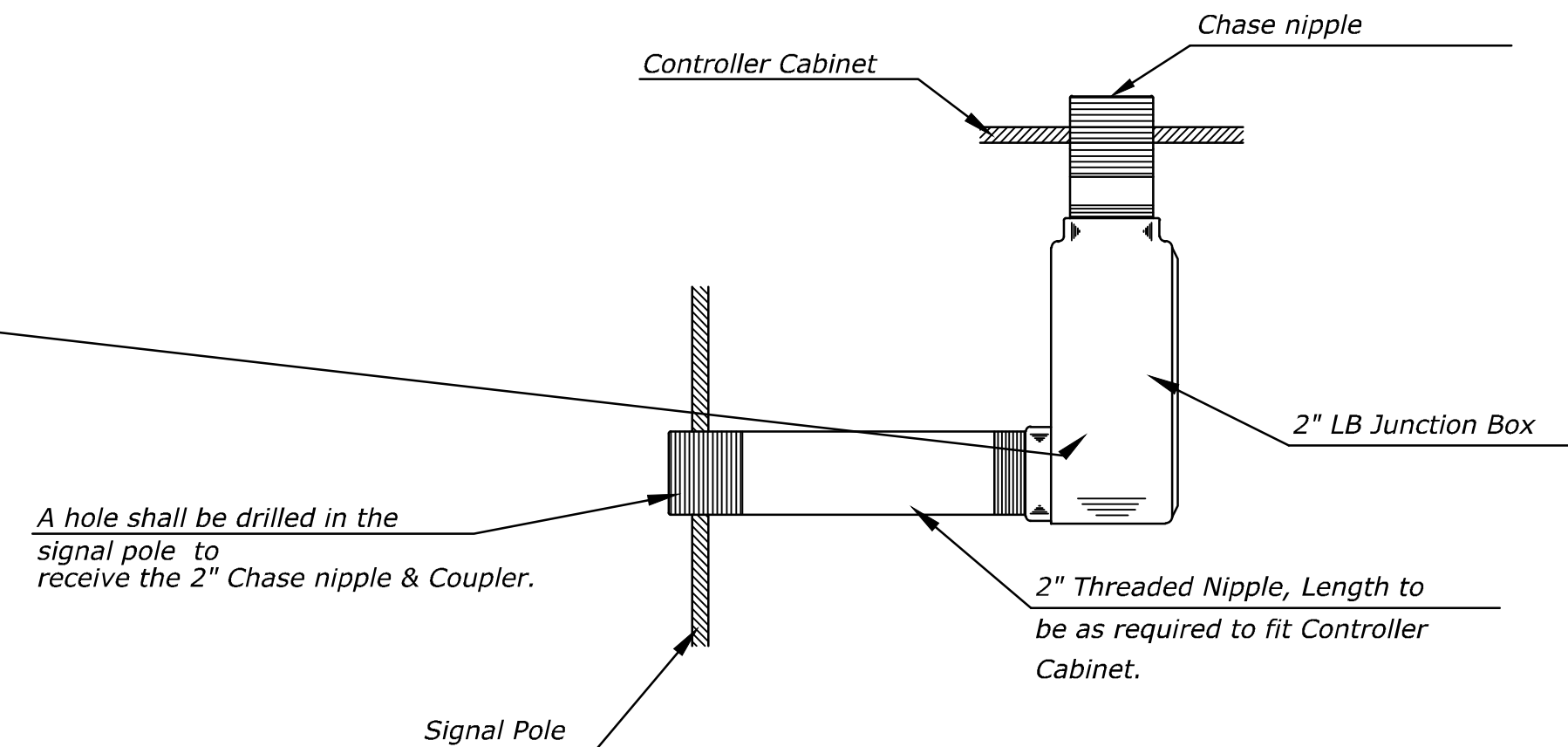
**PEDESTRIAN PUSHBUTTON/SIGN
UNIT DETAIL**



TRAFFIC SIGNAL PEDESTAL



**TRAFFIC SIGNAL PEDESTAL
WITH CONTROLLER CABINET**



A hole shall be drilled in the signal pole to receive the 2" Chase nipple & Coupler.

2" Threaded Nipple, Length to be as required to fit Controller Cabinet.

PUSH BUTTON STATION

Message and Sound options include:

- * Locating tone
- * Verbal Street Name (Example: Crossing Main at Central)
- * All features field selectable using a Configurator.

Construction:

- * Die-cast aluminum, powder coated Black in color.
- * Street Name in Braille in the directional arrow of the sign.
- * Option "B" signing option.

Push button:

- * ADA compliant
- * Raised tactile arrow on the button
- * Solid State switch rated at a Minimum of 20 million actuations

PLATE MARKING OPTIONS

STANDARD OPTION A

OPTION B



SIGNAL PEDESTAL & BASE WITH ADA PUSH BUTTON		
TRAFFIC ENGINEER BRIAN A. COON P.E.		
PROJECT NUMBER 87 N-0662-01	OCA NUMBER 706903	DATE 8/30/2019
CITY ENGINEER'S OFFICE CITY HALL - SEVENTH FLOOR 455 NORTH MAIN STREET WICHITA, KANSAS 67202-1620 (316) 268-4501		SHEET 142 OF 194

J:\CIVIL\04177\DWG\TRAFFIC\04177-TD03.DWG

REVISED: AUGUST 2014

TR-112

Sh. No. 142