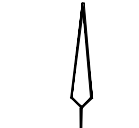
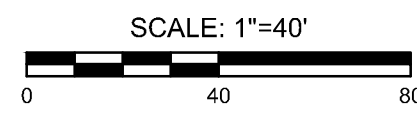
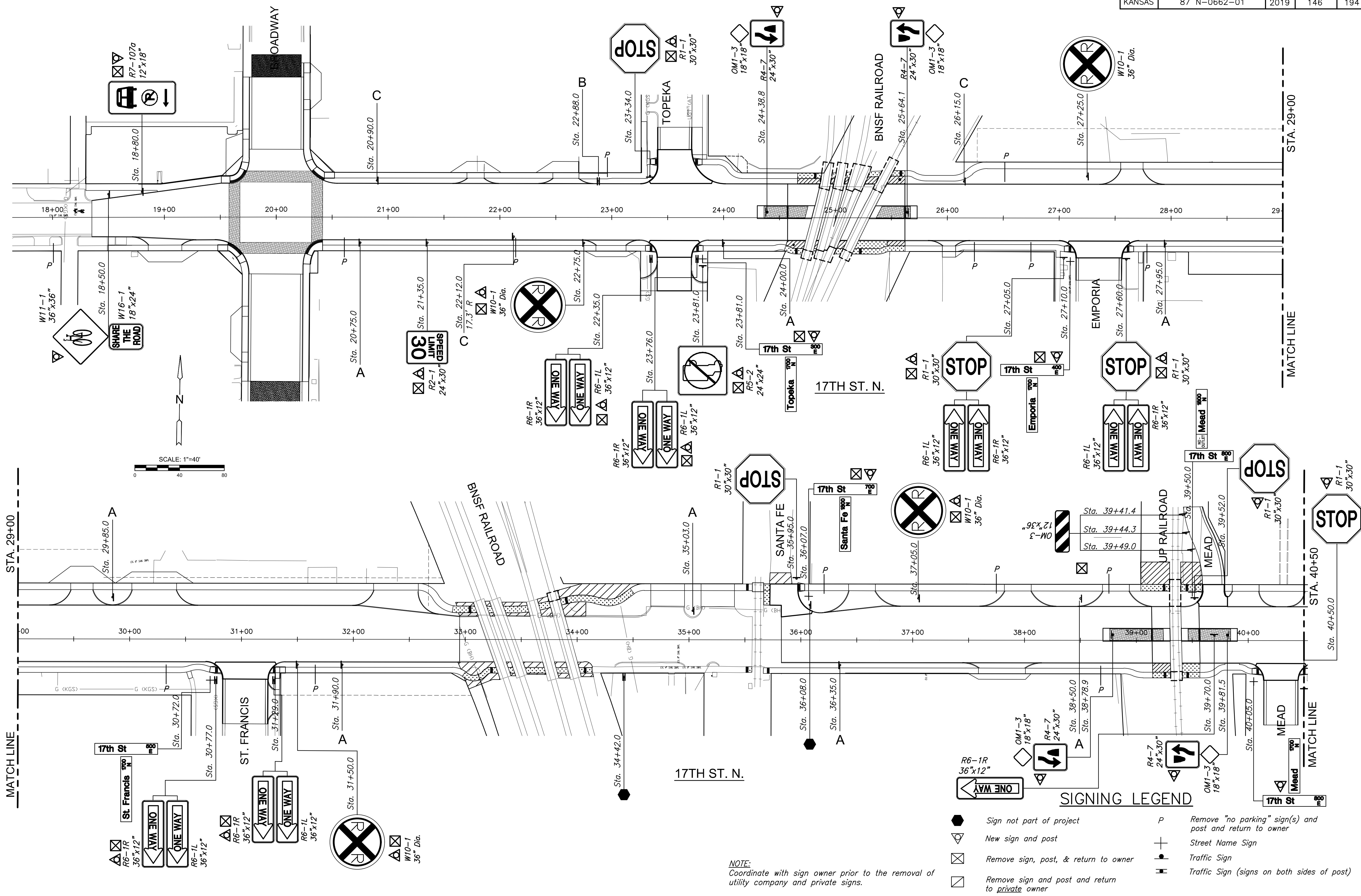


PLOTTED: Tuesday, September 03, 2019 @ 04:27PM

STATE	PROJECT NO.	YEAR	SHEET NO.	TOTAL SHEETS
KANSAS	87 N-0662-01	2019	146	194



**SIGNING LEGEND**

	Sign not part of project		Remove "no parking" sign(s) and post and return to owner
	New sign and post		Street Name Sign
	Remove sign, post, & return to owner		Traffic Sign
	Remove sign and post and return to private owner		Traffic Sign (signs on both sides of post)

**NOTE:**  
Coordinate with sign owner prior to the removal of utility company and private signs.

**STREET IMPROVEMENTS FOR**  
**17TH ST - BROADWAY TO I-135**  
FROM BROADWAY TO I-135

©2019 MKEC Engineering All Rights Reserved  
www.mkec.com  
These drawings and their contents, including, but not limited to, all concepts, designs, & ideas are the exclusive property of MKEC Engineering (MKEC), and may not be used or reproduced in any way without the express consent of MKEC.

**SIGNING PLAN**

PROJECT NO.	87 N-0662-01		
DATE	8/30/2019		
SCALE	AS NOTED		
DESIGNED	DRAWN	CHECKED	
JRA	DM	JTC	
NO.	REVISION	DATE	
SHEET NO.			