

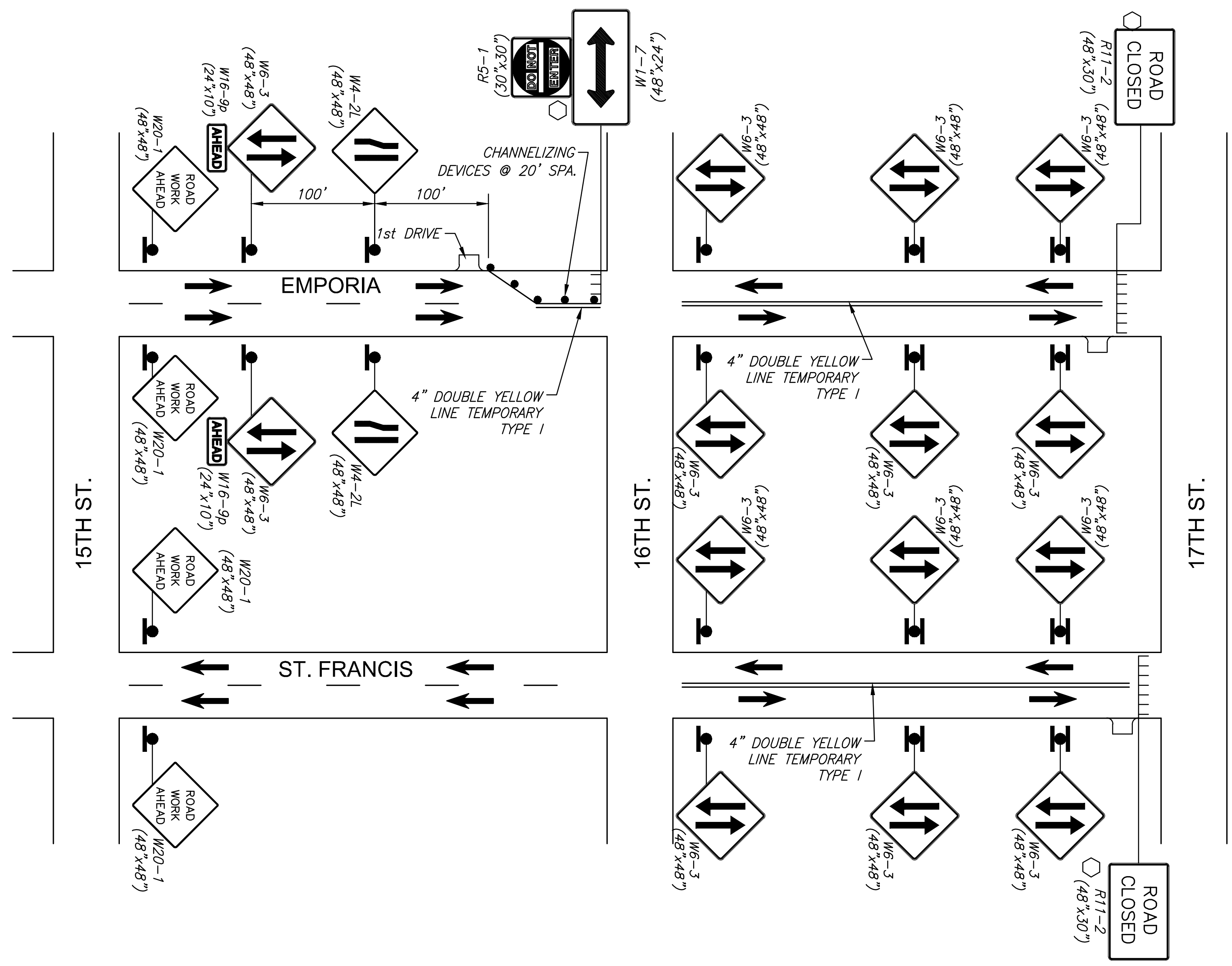
PLOTTED: Tuesday, September 03, 2019 @ 04:34PM

J:\CIVIL\0417\DWG\17\04177-1\17-101.DWG

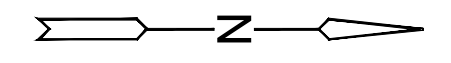
STATE	PROJECT NO.	YEAR	SHEET NO.	TOTAL SHEETS
KANSAS	87 N-0662-01	2019	157	194



STREET IMPROVEMENTS FOR  
**17TH ST - BROADWAY TO I-135**  
 FROM BROADWAY TO I-135



TRAFFIC CONTROL FOR TEMPORARY TWO-WAY  
 TRAFFIC ON EMPORIA AND ST. FRANCIS



NOTE: CONTRACTOR TO COVER ALL CONFLICTING EXISTING ONE-WAY SIGNS DURING THE UTILIZATION OF THIS TRAFFIC CONTROL PLAN.

**LEGEND**

	Type III Barricades with lights
	Mount On Type III Barricade
	Sign
	Double Sided Sign
	Direction of Traffic
	Channelizer

©2019 MKEC Engineering All Rights Reserved www.mkec.com  
 These drawings and their contents, including, but not limited to, all concepts, designs, & ideas are the exclusive property of MKEC Engineering (MKEC), and may not be used or reproduced in any way without the express consent of MKEC.

**EMPORIA & ST. FRANCIS TRAFFIC CONTROL DETAILS**

PROJECT NO.	87 N-0662-01	
DATE	8/30/2019	
SCALE	NA	
DESIGNED	DRAWN	CHECKED
JRA	WNJ	JRA

NO.	REVISION	DATE

SHEET NO.  
 157 OF 194