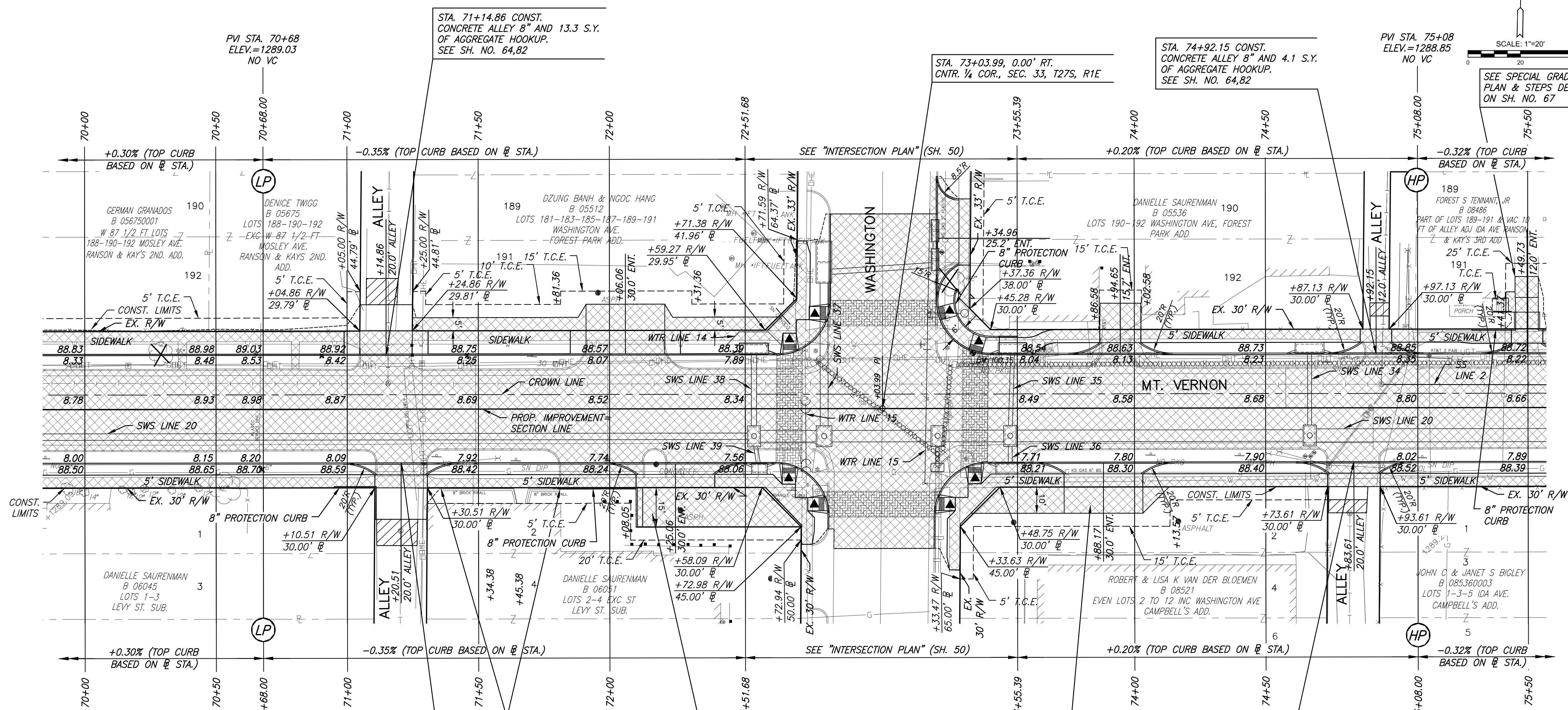


CNTR. 1/4 COR., SEC. 33, T27S, R1E
 1.
 2.
 3.
 4.
 5. N=1675308.330, E=1652276.5300

PI STA. 73+03.99, MT VERNON
 1. N=1675308.330, E=1652276.5300

STATE	PROJECT NO.	YEAR	SHEET NO.	TOTAL SHEETS
KANSAS	87 N-0660-01	2019	10	198



STATION	OFFSET	EXIST. ELEV.	PROP. ELEV.	REMARKS
71+15.55	9.86' LT.	1288.68	1288.68	SS MH NO ADJUSTMENT REQUIRED
72+74.45	22.11' LT.	1288.64	1288.34	VALVE BOX ADJUSTMENT
73+20.11	28.56' RT.	1287.98	1288.23	VALVE BOX ADJUSTMENT
73+26.7	59.5' LT.	1288.45		RELOCATE WATER METER
74+65.04	18.40' RT.	1288.39		RELOCATE WATER METER
74+67.10	18.37' RT.	1288.46		RELOCATE WATER METER
74+68.45	16.97' RT.	1288.40		RELOCATE WATER METER
74+94.10	8.96' LT.	1288.28	1288.66	SS MH ADJUSTMENT
75+12.37	19.86' LT	1289.22		RELOCATE WATER METER

STA. 71+20.51 CONST. CONCRETE ALLEY 8" AND 17.2 S.Y. OF AGGREGATE HOOKUP. SEE SH. NO. 64,82

STATION TO STATION	SIDE	QUANTITY	REMARKS
STA. 70+95.01 TO STA. 71+10.92	RT.	28.5	ALONG BACK OF SIDEWALK
STA. 71+81.02 TO STA. 72+10.06	RT.	29.1'	ALONG BACK OF SIDEWALK
STA. 73+31.15 TO STA. 73+48.59	LT.	30.3'	NE CORNER INTERSECTION WASHINGTON
STA. 73+48.59 TO STA. 73+55.48	LT.	6.9'	ALONG BACK OF SIDEWALK
STA. 75+29.38 TO STA. 75+45.38	LT.	22.9'	AT DRIVE ENTRANCE

STATION	OFFSET	ITEM	REMARKS
72+44.8 TO 72+65.2	24.6' LT.	20.9' OF 8" PIPE	
72+74.9	22.2' RT.-1.3' LT.	23.8' OF 8" PIPE	
72+77.7	17.2' LT.	CURB INLET	
72+77.7 TO 72+80.2	17.2' LT.-19.1' LT.	1.3' OF 15" VCP	
72+80.2	19.1' LT.	CURB INLET	
72+80.2 TO 73+26.7	19.1' LT.-18.7' RT.	57.9' OF 15" VCP	
73+20.23	28.6' RT.-76.2' LT.	104.5' OF 8" PIPE	
73+26.7	18.7' RT.	CURB INLET	
73+26.7 TO 73+24.9	18.7' RT.-22.5' RT	8.0' OF 15" VCP	
73+26.7 TO 73+30.0	18.7' RT.-17.2' LT.	32.8' OF 15" VCP	
73+30.0 TO 75+50.0	17.2' LT.	217.5' OF 15" VCP	

	PAVEMENT REMOVAL
	CONSTRUCT WHEELCHAIR RAMP SEE SH. NO. 68
	AGGREGATE HOOKUP
	BRICK PAVERS
	PAVEMENT REMOVED AND REPLACED
	8" SIDEWALK
	STORM SEWER REMOVAL
	TREE REMOVAL
	CURB HEIGHT TRANSITION

STREET IMPROVEMENTS FOR
MT. VERNON IMPROVEMENTS
 BROADWAY TO SOUTHEAST BLVD.

©2019 MKEC Engineering
 All Rights Reserved
 www.mkec.com
 These drawings and their contents, including, but not limited to, all concepts, designs, & ideas are the exclusive property of MKEC Engineering (MKEC), and may not be used or reproduced in any way without the express consent of MKEC.

PAVING PLANS STA. 70+00 TO STA. 75+50	
PROJECT NO.	87 N-0660-01
DATE	8/19/2019
SCALE	1"=20'
DESIGNED	JRA
DRAWN	WNJ
CHECKED	JRA
NO.	REVISION
DATE	
SHEET NO. 10 OF 198	