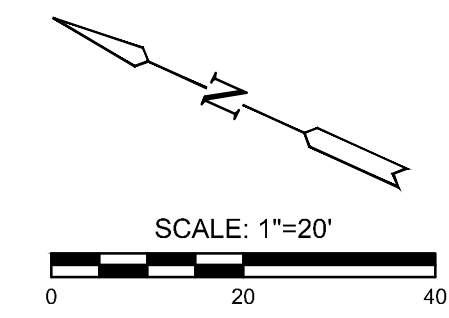
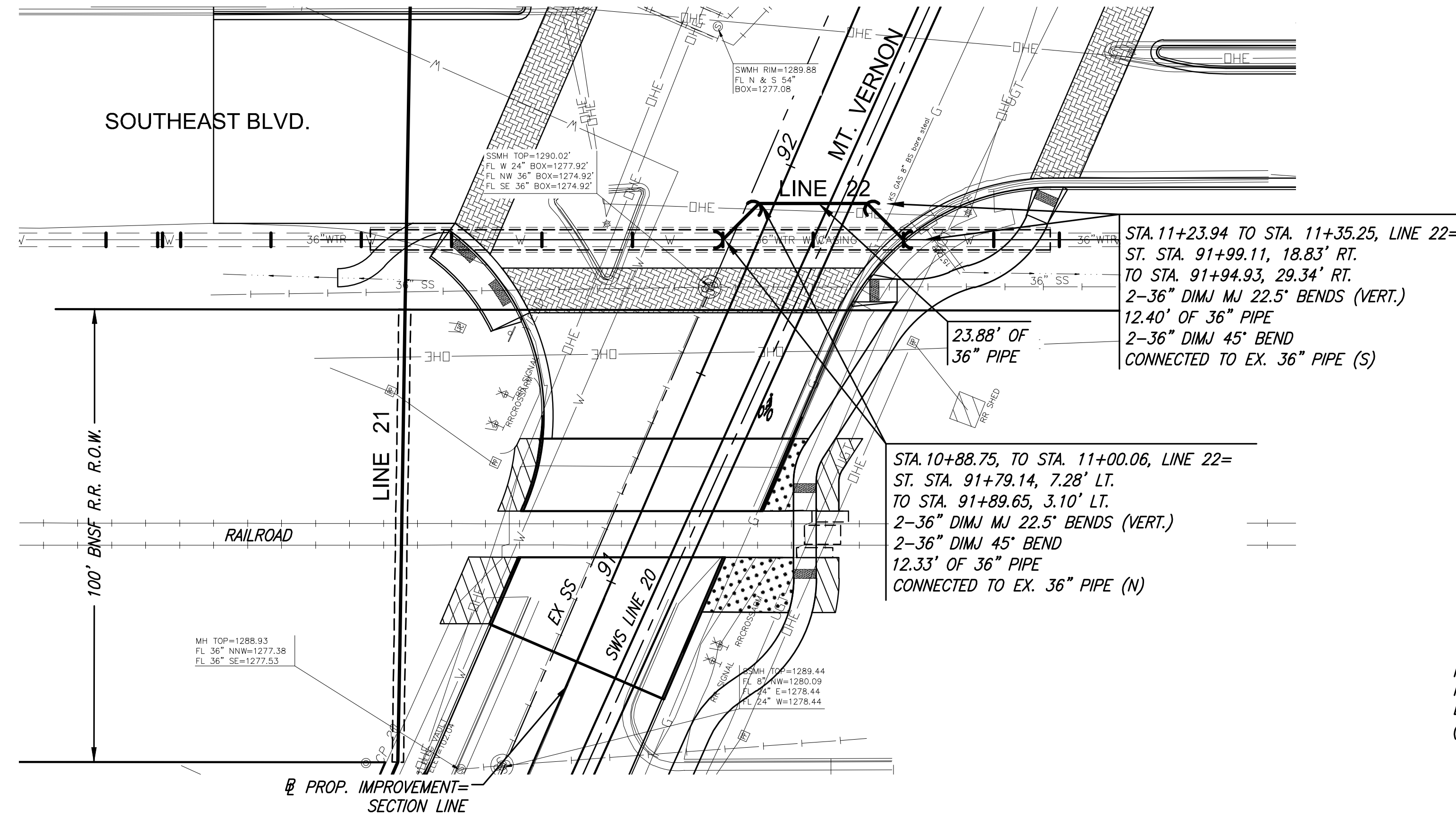
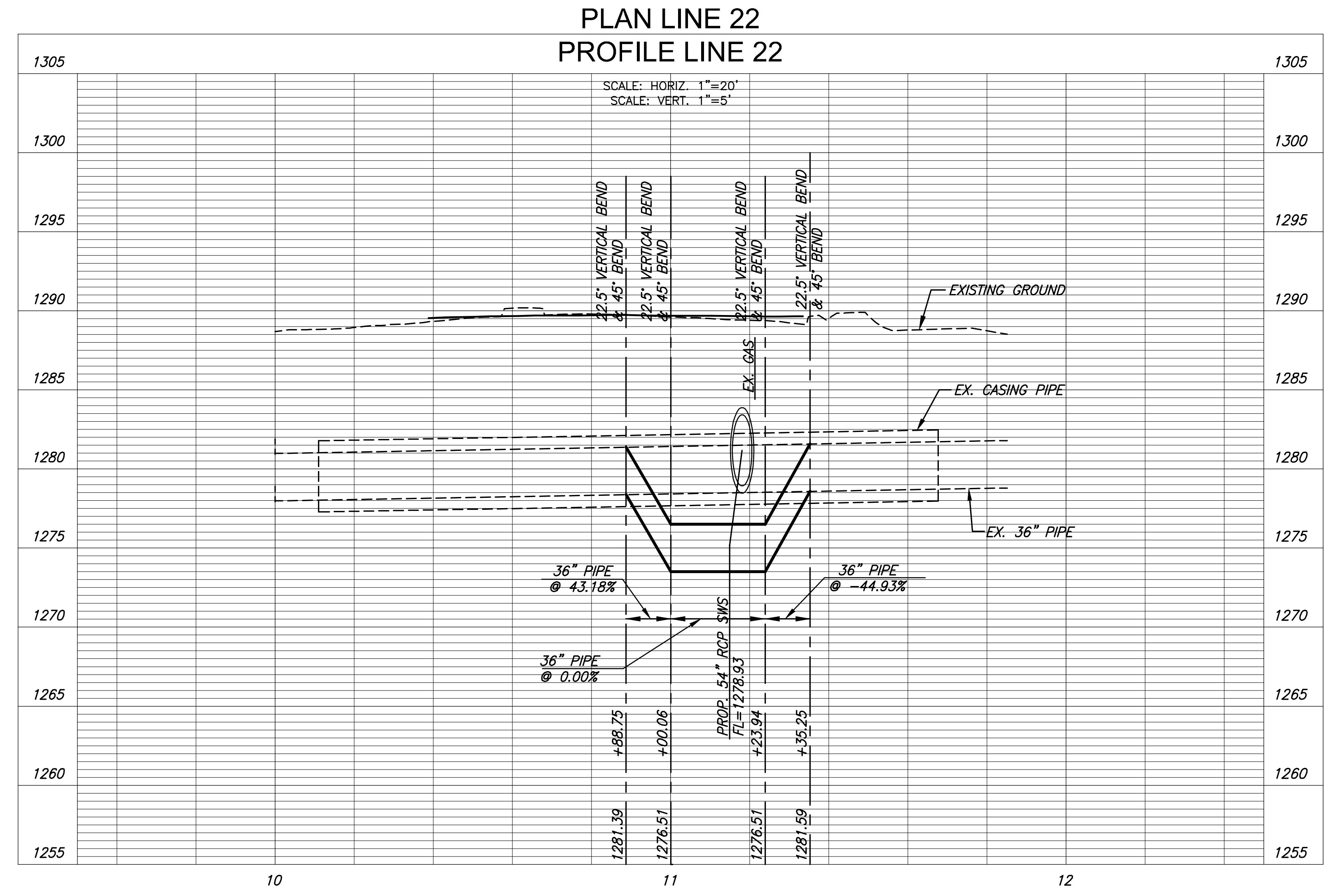


PLOTTED: Friday, August 23, 2019 @ 03:38PM

J:\CIVIL\08138\DWG\WTR\08138_CSDWG



NOTE: CONTRACTOR TO REMOVE CASING AS NEEDED TO COMPLETE LOWERING. LOWERING MUST OCCUR DURING LOW USAGE (MAJOR FEED TO CITY OF DERBY).



STREET IMPROVEMENTS FOR
MT. VERNON IMPROVEMENTS
BROADWAY TO SOUTHEAST BLVD.

©2019
MKEC Engineering
All Rights Reserved
www.mkec.com
These drawings and their contents, including, but not limited to, all concepts, designs, & ideas are the exclusive property of MKEC Engineering (MKEC), and may not be used or reproduced in any way without the express consent of MKEC.

WTR LINE 22	
PROJECT NO.	87 N-0660-01
DATE	8/19/2019
SCALE	1"=20'
DESIGNED	DRAWN
JTC	DM
CHECKED	JTC
NO.	REVISION
	DATE
SHEET NO.	
102 OF 198	